

3148
MIDWAY DRIVE

SAN DIEGO, CA

MIDWAY DISTRICT



FOR LEASE

+/- 5,339 SF RETAIL / OFFICE / SHOWROOM

Information deemed reliable but not guaranteed. Subject to errors, omissions, change or withdrawal without notice. Broker assumes no liability.

PROPERTY OVERVIEW

MIDWAY VILLAGE

3148 Midway Drive is located within Midway Village, a well-positioned shopping center along busy Midway Drive in the heart of San Diego's Point Loma / Sports Arena trade area. The center offers excellent visibility at a prominent, signalized intersection and benefits from high traffic volume and strong consumer activity.

Midway Village features high-visibility signage, convenient ingress/egress, and multiple access points, making it an ideal location for both local and national retailers. Surrounded by dense residential neighborhoods and established commercial anchors, the center presents a strong opportunity for retail, service-based, or daily-needs tenants looking to establish a presence in one of San Diego's most active commercial corridors.



PROPERTY HIGHLIGHTS

SIZE:	+/- 5,339 SF
YEAR BUILT/ RENOVATED:	1985 / 2018
PARKING RATIO:	PRORATE PARKING
STORIES:	2
SIGNAGE:	Yes
FACADE:	MASONRY
OTHER FEATURES:	FIRST - COME - FIRST SERVE
LEASE RATE:	\$1.50 / SF GROSS





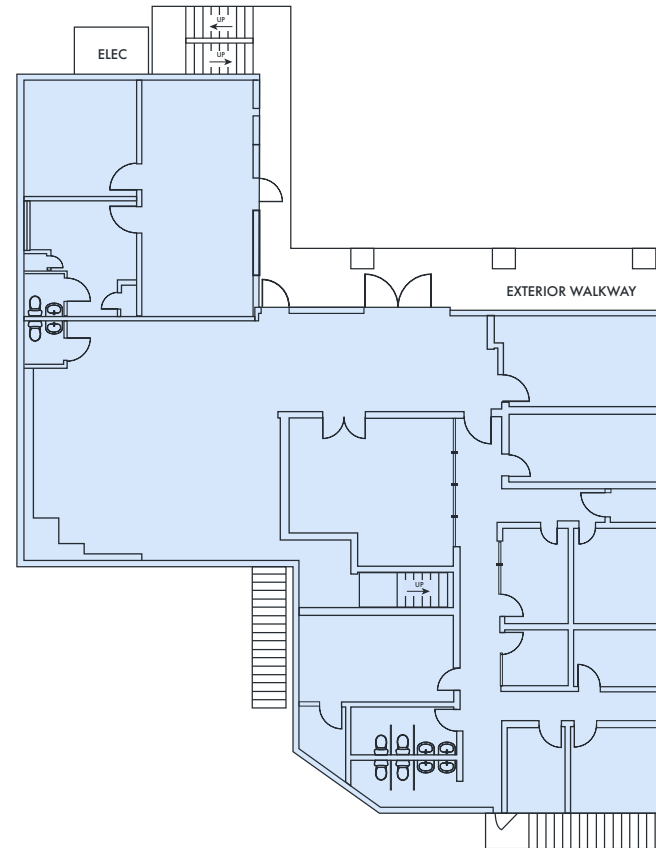
Information deemed reliable but not guaranteed. Subject to errors, omissions, change or withdrawal without notice. Broker assumes no liability.

FLOOR PLAN

3148
MIDWAY DRIVE

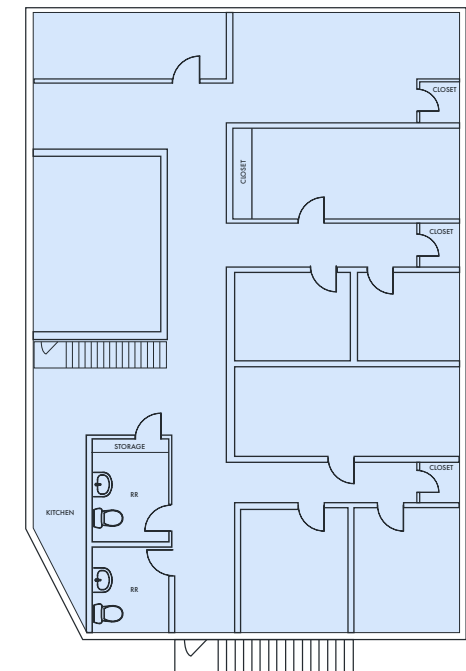


+/- 5,339 SF
RETAIL BUILDING



FIRST FLOOR

ENTRANCE
FACING
MIDWAY

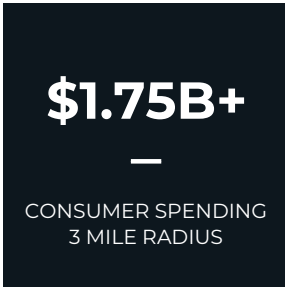
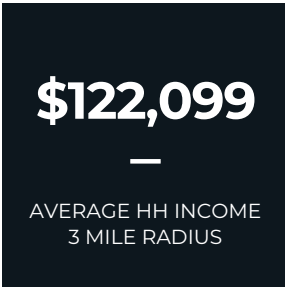
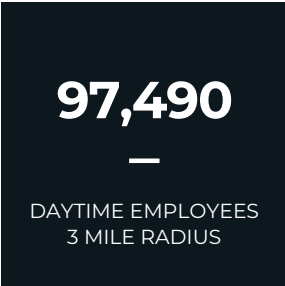


SECOND FLOOR

MIDWAY DISTRICT AREA OVERVIEW



Source: City of San Diego

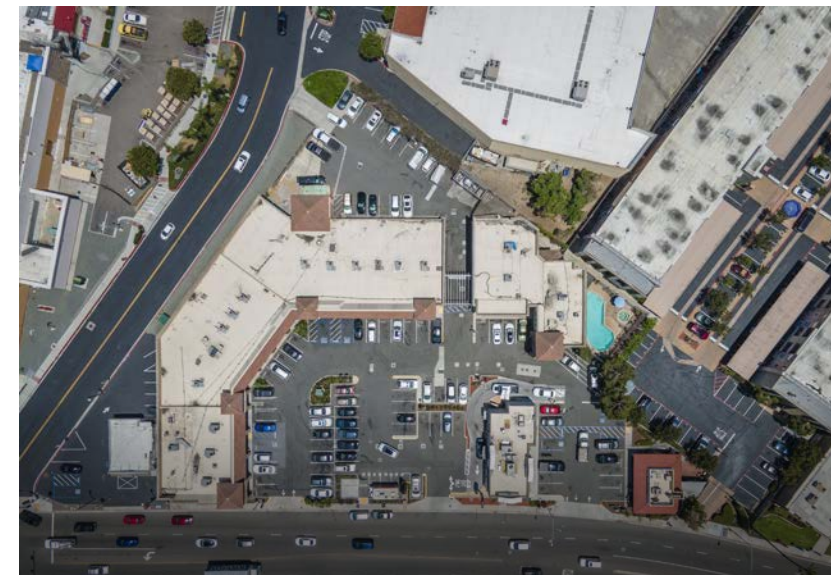


The Midway District is a centrally positioned San Diego submarket experiencing significant reinvestment and growth. Historically anchored by retail, service, and entertainment uses, the area is undergoing a transition fueled by both public and private development activity. Strategically located at the intersection of Interstates 5 and 8, the Midway District offers excellent regional access and serves as a key connection point between Downtown San Diego, Point Loma, Liberty Station, Mission Valley, and the surrounding beach communities. Proximity to San Diego International Airport and the Old Town Transit Center further enhances its connectivity, making it a natural hub for both commercial and residential activity. The district is seeing a steady increase in daily traffic, visitation, and residential density, contributing to higher retail demand and long-term value appreciation.

A central catalyst for this growth is the approved Midway Rising redevelopment, which will transform the 48.5-acre San Diego Sports Arena site into a large-scale mixed-use project featuring residential units, a new 16,000-seat arena, public park space, and a cultural and entertainment district. This project is expected to draw significant foot traffic and economic activity to the surrounding area, directly benefiting nearby retail and commercial assets. With a population of over 300,000 residents within a five-mile radius, strong transit infrastructure, and an active development pipeline, the Midway District offers a compelling opportunity for occupiers and investors seeking exposure to one of San Diego's most accessible and evolving urban submarkets.

Source: City of San Diego, CoStar

MIDWAY VILLAGE



MIDWAY RISING

The Midway Rising redevelopment is a transformative project proposed for the 48.5-acre site currently home to the San Diego Sports Arena. In September 2022, the San Diego City Council selected the Midway Rising team to lead the redevelopment following a competitive review process under the State's Surplus Land Act. The proposed plan includes 4,250 housing units—2,000 of which will be affordable—alongside a new 16,000-seat arena, expansive park space, and a vibrant mixed-use district with retail, dining, entertainment, and cultural amenities. The project aligns with the Midway-Pacific Highway Community Plan and is currently in the exclusive negotiation and environmental review phase (City of San Diego).



3148

MIDWAY DRIVE

SAN DIEGO, CA

MIDWAY DISTRICT



For information or to tour the property,
please contact:

JONATHAN DODGE
ASSOCIATE

t 619.541.2095
jdodge@lee-associates.com
CA RE Lic. #02191825

PAUL BRITVAR
First Vice President

t 858.230.1166
pbritvar@lee-associates.com
CA RE Lic. #01949354

STEVE MALLEY
President

t 949.295.4792
smalley@lee-associates.com
CA RE Lic. #013335036

LEE & ASSOCIATES
COMMERCIAL REAL ESTATE SERVICES

All information furnished regarding property for sale, rental or financing is from sources deemed reliable, but no warranty or representation is made to the accuracy thereof and same is submitted subject to error, omissions, change of price, rental or other conditions prior to sale, lease or financing or withdrawal without notice. No liability of any kind is to be imposed on the broker herein.