

619

PONCE



Seedlings to Solutions: The Sustainable Workplace, Redefined



CBRE



Atlanta's First Locally-Sourced Timber Office Building

Seedlings to Solutions

Ponce City Market, the largest adaptive reuse project in the Southeast, expands its commitment to sustainability with the introduction of 85,000 SF of new, mass-timber office space at the corner of Ponce de Leon Avenue and Glen Iris Drive.



SAGE OFFICE BUILD OUT



619 Ponce features:

- Natural Wood Columns and Ceilings
- Cross-Laminated Timber
- Operable Floor-to-Ceiling Windows
- Outdoor Space on Every Level
- Rooftop Terrace
- Open Air Courtyard
- Zero Net Carbon Operating Standards
- Targeting LEED Gold Certification
- Fitwel Certified



Brand Leaders are Choosing Timber

These brand leaders understand why their office environment matters — it is proven that the timber environment increases employees’ workplace satisfaction, productivity, and overall wellbeing.



“A new kind of workplace—in form, function, aesthetic, and connection—that is first and foremost about **the wellbeing and symbiosis of people and place.**”



“The design team used mass timber to emphasize occupant health and well-being, blending natural materials with daylit interiors, views, and organic textures to create **a workplace that aligns naturally with the company’s commitment to innovation and collaboration.**”



“This represents Under Armour’s commitment to providing our teammates with an **innovative, collaborative and flexible work environment** that supports our hybrid work philosophy”



“We are encouraging associates to **enjoy and connect with nature** – both indoors and outdoors – through natural lighting, warm interior finishes, mass timber construction and views of trees, courtyards, landscapes”



“Timber became part of the interior story, which is about **authenticity.**”



What's in it for Your Employees?

More productive employees, better quality work product and increased retention of talent.

23%

Lower Stress Levels

8%

Greater Productivity

13%

Increase in Overall Well-Being

34%

Increased Workplace Satisfaction

18%

Increase in Concentration

619

PONCE

Communal Office
Roof Deck

Three Large
Balconies per Floor

Locally-sourced
Timber

Lobby

Retail

FLOOR 2 - AVAILABLE

MEZZANINE - AVAILABLE

Glen Iris

Ponce City Market NNE

An Ecosystem Engineered for Excellence

Everything you need is right here

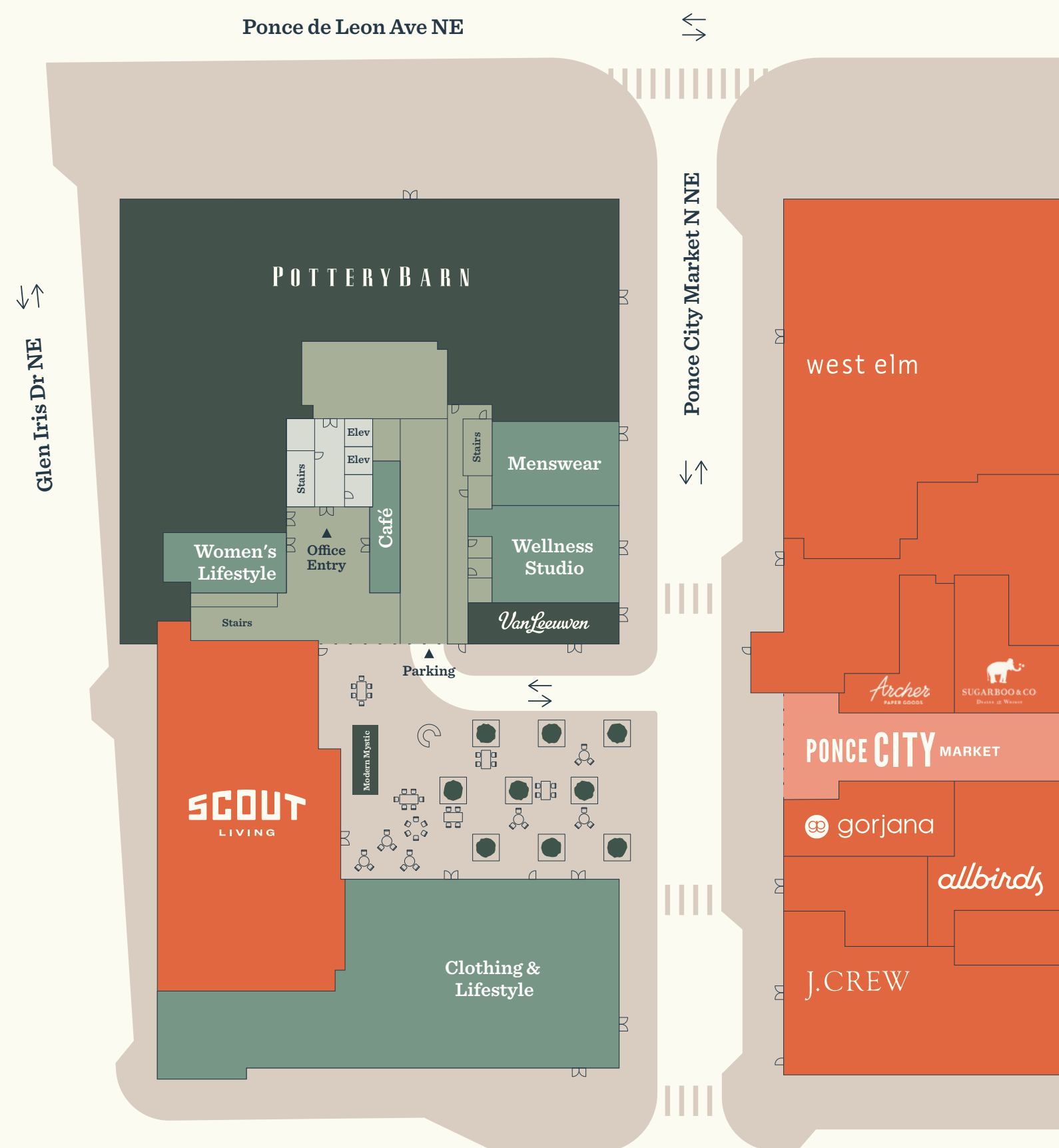
619 Ponce is located on the Ponce City Market campus along the Atlanta Beltline, and is adjacent to Scout Living. The connected open air courtyard features retailers such as Pottery Barn, Van Leeuwen Ice Cream, the Modern Mystic Shop and more.

- Secured Access and Touch-free Technology
- On-site Management and Security
- Convenient Access to Transit and I-75/I-85 Connector
- 2.5/1,000 Parking
- Tenant Storage and Data Center Space Available

Campus Amenities:

- Furnished Corporate Apartments
- On-site Daycare & Medical Facilities
- Direct Beltline Access
- Ponce City Market Tenant App
- Electric Vehicle Charging Stations
- Bike Storage
- Shower Rooms
- Complimentary Access to Slater Hospitality's "The Roof" at PCM
- Flexible Stay Options at Scout Living

Ground Floor Plane





SAGE OFFICE BUILD OUT





A New Level of Inspiration

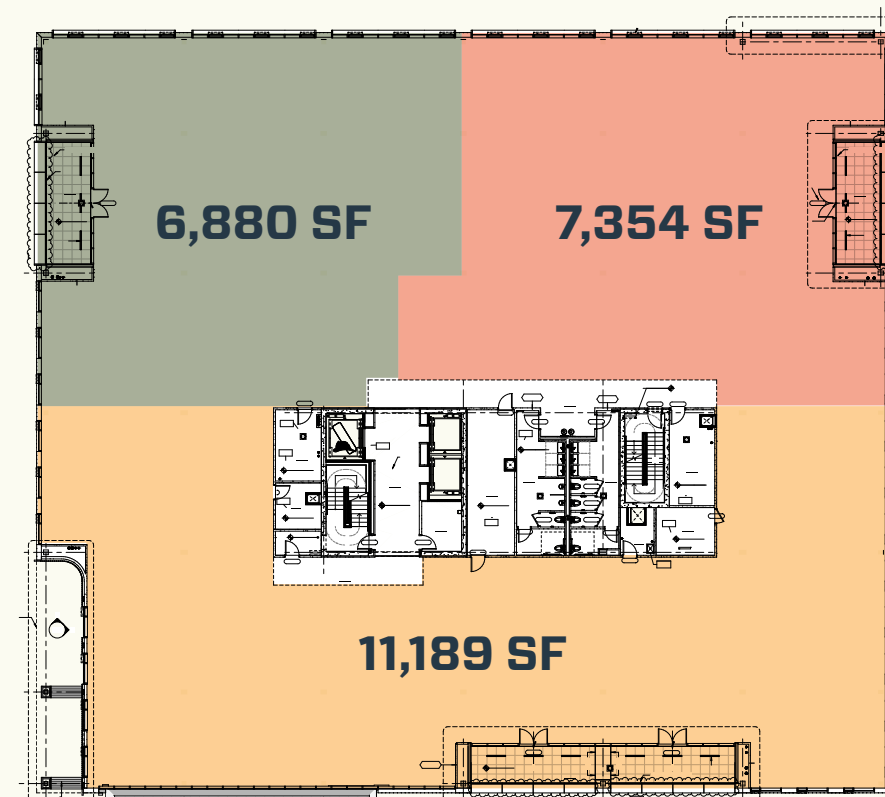
Floor 2 is Available Now

- 30,727 SF
- Three (3) 545 SF balconies per floor
- Lower level, PCM-connected parking with direct-to-space elevator/stair access
- A new West Passage connection provides a fast-access direct connection to Glen Iris Drive
- Building specific rideshare drop-off spots on Glen Iris Drive
- Bike parking/showers



Sample
Full Floor
Opportunity
30,727 SF

Craft the space you need with a
fully demisable floorplate.



Sample
Multi-Tenant
Opportunities
6K-11K SF

Welcome to Ponce City Market

619 Ponce sits in a dynamic campus
that offers one-of-a-kind workdays

Across the Campus

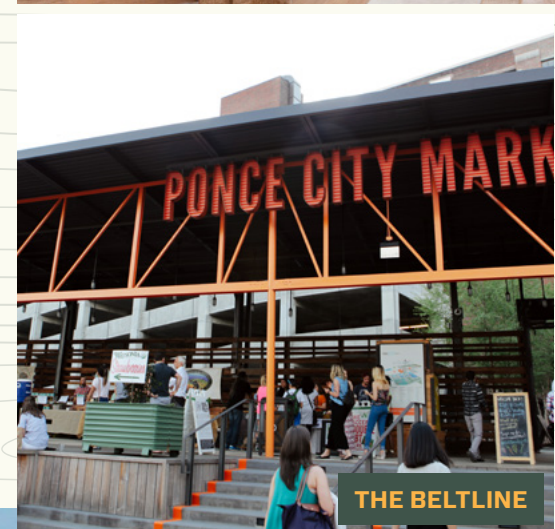
745K SF Class A Office	350K SF Curated Retail	827 Residential Units
----------------------------------	----------------------------------	---------------------------------



LIFESTYLE RETAIL



DIVERSE OUTDOOR SPACES



THE BELTLINE



RENNOWNED EATERIES



ARTISTS MARKETS



FITNESS PROGRAMMING



THE ROOF



LIVELY CENTRAL FOOD HALL



For office leasing information

Kyle Kenyon

770.630.6767

Kyle.Kenyon@cbre.com

Nicole Goldsmith

678.978.3933

Nicole.Goldsmith@cbre.com



© 2025 CBRE, Inc. All rights reserved. This information has been obtained from sources believed reliable, but has not been verified for accuracy or completeness. You should conduct a careful, independent investigation of the property and verify all information. Any reliance on this information is solely at your own risk. CBRE and the CBRE logo are service marks of CBRE, Inc. All other marks displayed on this document are the property of their respective owners, and the use of such logos does not imply any affiliation with or endorsement of CBRE. Photos herein are the property of their respective owners. Use of these images without the express written consent of the owner is prohibited.