

Vadnais Square

905 County Rd E | Vadnais Heights, MN



Vadnais Square

905 County Rd E | Vadnais Heights, MN

Property Features

- + Fresh Thyme anchored and Target shadow-anchored property
- + Strong national co-tenancy
- + Direct access and visibility from I-35E

GLA

- + 123,187 SF

Available Space

- + Suite 955-B: 7,838 SF

Demographics

	1 Mile	3 Miles	5 Miles
Population	4,538	54,858	175,352
Daytime Population	7,264	66,877	172,300
Median Age	42.2	42.7	40.9
Households	1,910	22,977	68,362
Average Household Income	\$92,783	\$117,227	\$116,225

Traffic Counts

- + County Rd E: 20,731 VPD
- + I-35E: 80,880 VPD
- + Centerville Rd: 4,465 VPD
- + Arcade St: 4,050 VPD

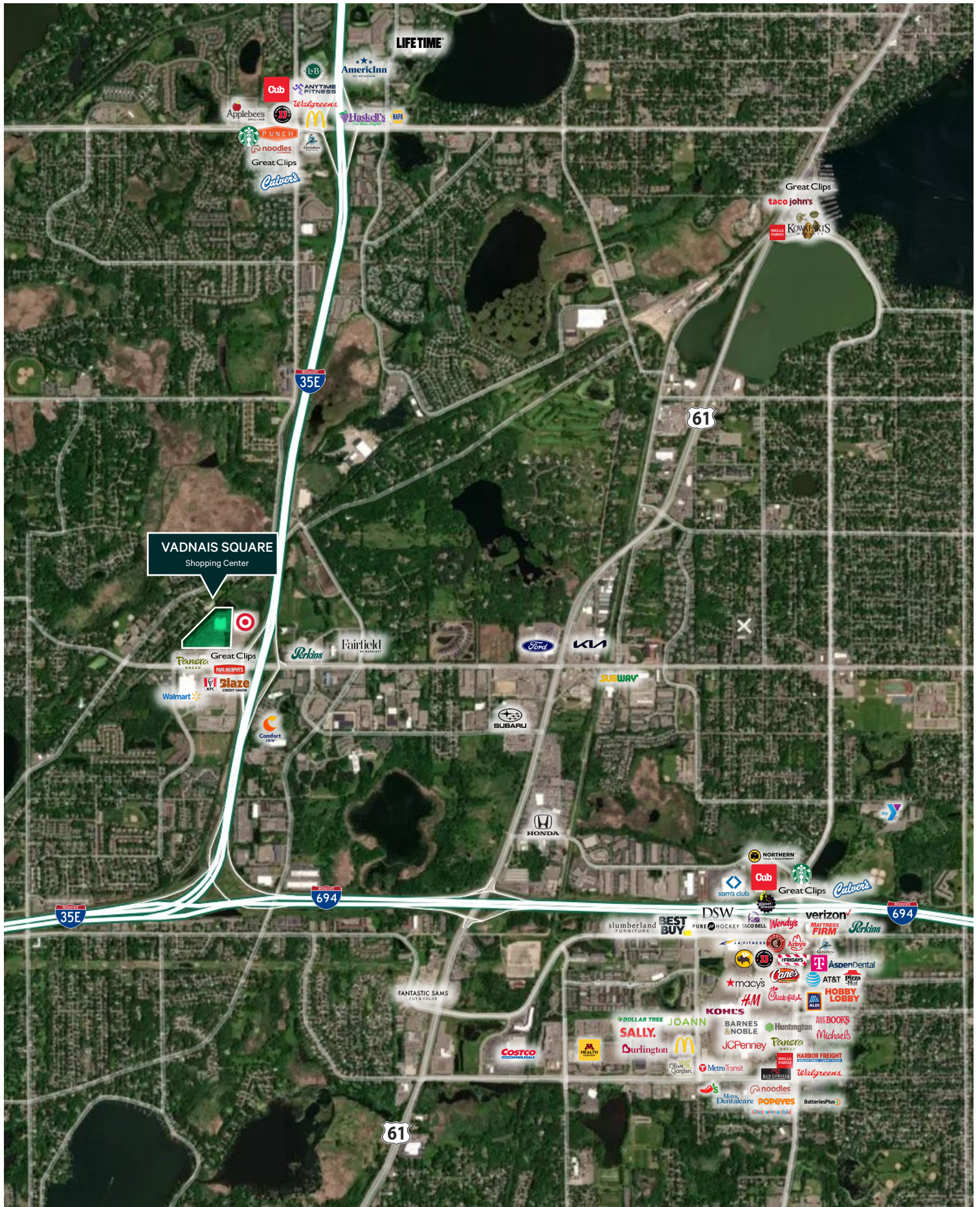
Area Retailers



Co-Tenants

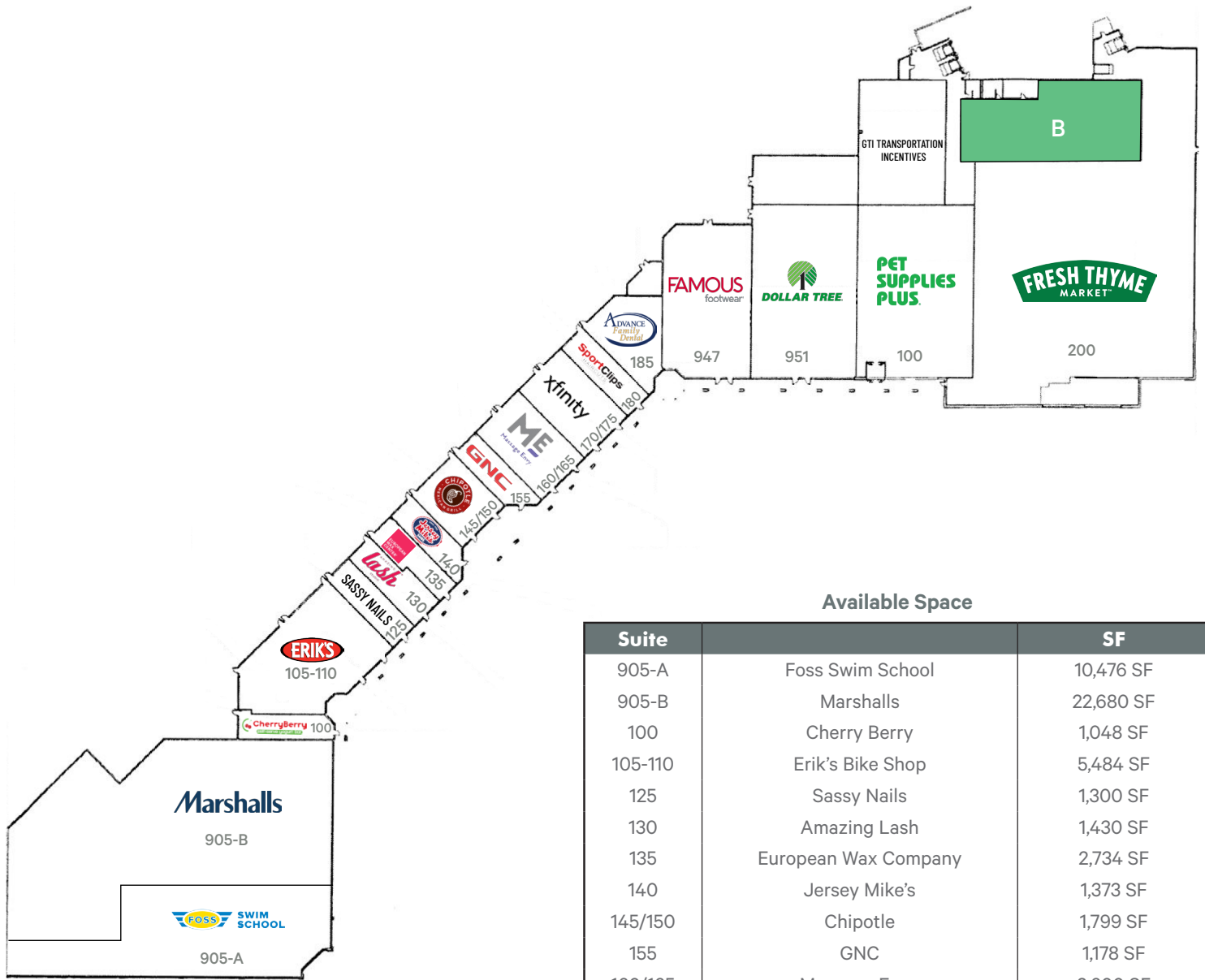


For Lease



Vadnais Square

905 County Rd E | Vadnais Heights, MN



Available Space

Suite		SF
905-A	Foss Swim School	10,476 SF
905-B	Marshall's	22,680 SF
100	Cherry Berry	1,048 SF
105-110	Erik's Bike Shop	5,484 SF
125	Sassy Nails	1,300 SF
130	Amazing Lash	1,430 SF
135	European Wax Company	2,734 SF
140	Jersey Mike's	1,373 SF
145/150	Chipotle	1,799 SF
155	GNC	1,178 SF
160/165	Massage Envy	2,600 SF
170/175	Xfinity	2,600 SF
180	Sports Clips	1,300 SF
185	Advance Family Dental	2,234 SF
947	Famous Footwear	6,136 SF
951	Dollar Tree	8,082 SF
100	Pet Supplies Plus	9,005 SF
200	Fresh Thyme Farmers Market	28,354 SF
955-A	GTI Transportation Incentives	5,687 SF
955-B	AVAILABLE	7,838 SF

For Lease



Contact Us

Rob Wise

First Vice President
+1 612 336 4274
rob.wise@cbre.com

Charlie Hexum

Vice President
+1 612 336 4275
charlie.hexum@cbre.com

© 2024 CBRE, Inc. All rights reserved. This information has been obtained from sources believed reliable, but has not been verified for accuracy or completeness. You should conduct a careful, independent investigation of the property and verify all information. Any reliance on this information is solely at your own risk. CBRE and the CBRE logo are service marks of CBRE, Inc. All other marks displayed on this document are the property of their respective owners, and the use of such logos does not imply any affiliation with or endorsement of CBRE. Photos herein are the property of their respective owners. Use of these images without the express written consent of the owner is prohibited.