

FOR SALE

Rare Opportunity



862-868 East 26th Street, Paterson

\$2,800,000

♦ Mechanic ♦ Auto body ♦ Car lot

All licenses included!

Property Features

- 2 Building totaling 10,000 SF
- 4-car garage structure
- Taxes: \$46,000
- Lot size: Approx. 163 x 112 SF
Approx. 18,256 SF

For more information



**Nicholas
Tselepis**

Broker/Owner

Cell: (973) 725-3778

Nick@NicholasRealEstate.com



**Alexandra
Constandinou**

Broker Salesperson

Cell: (973) 634-8853

Alexa@NicholasRealEstate.com

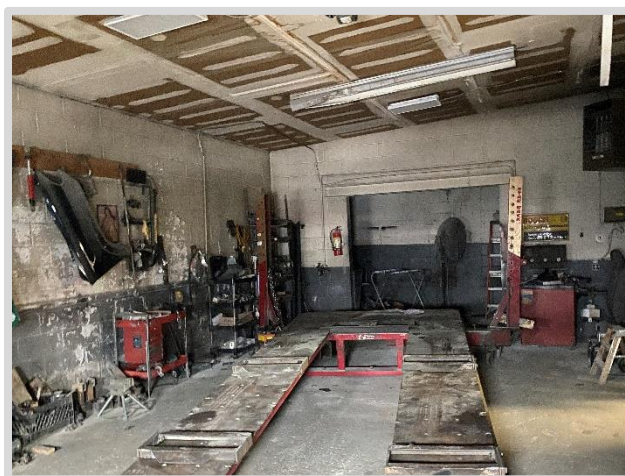


www.NicholasRealEstateCommercial.com

♦ Commercial ♦ Residential ♦ Investment ♦ Foreclosure ♦ Short Sale



862-868 East 26th St. Paterson

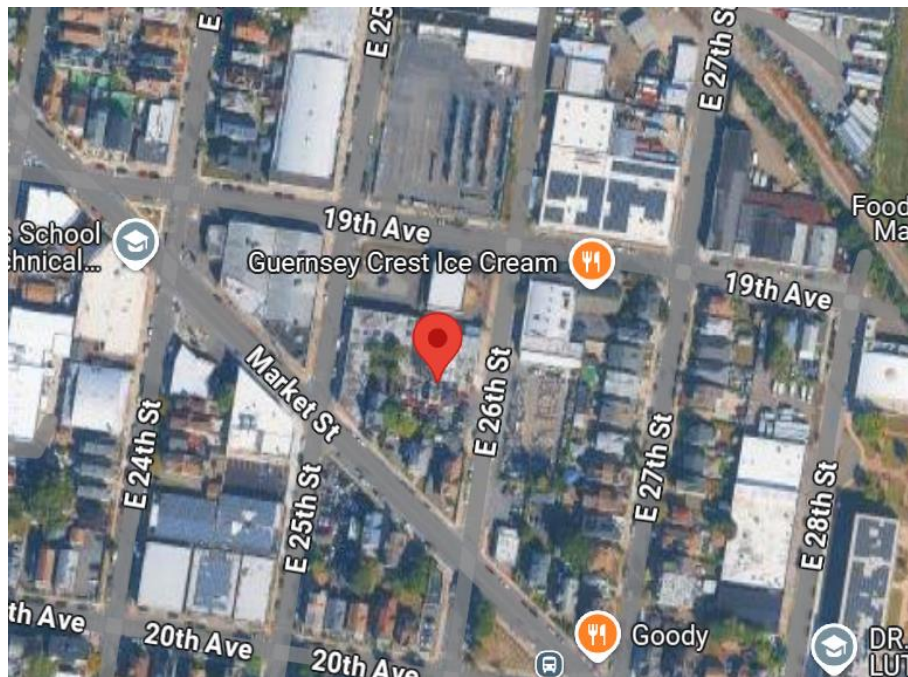
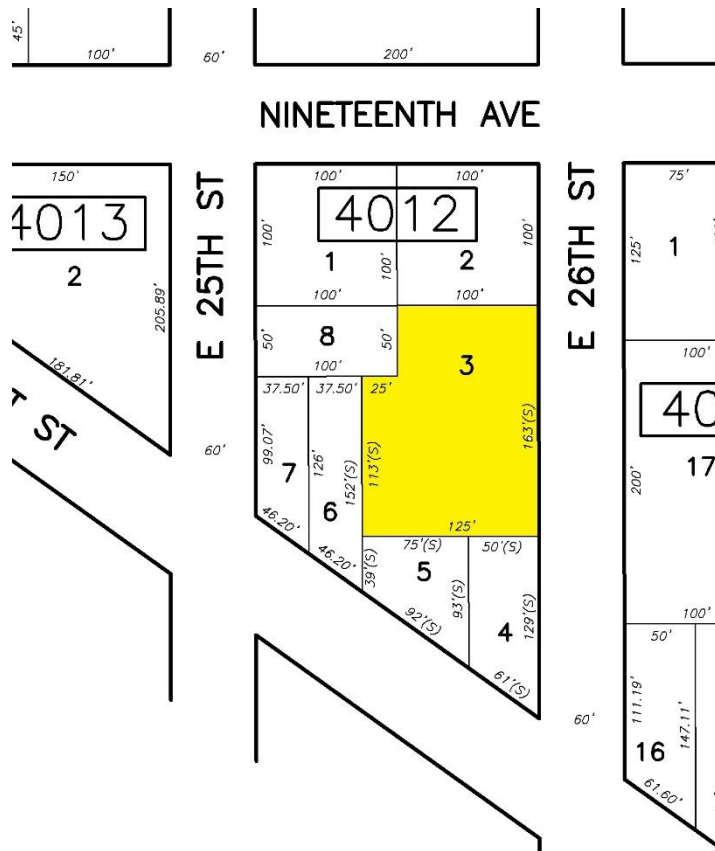


www.NicholasRealEstateCommercial.com

♦ Commercial ♦ Residential ♦ Investment ♦ Foreclosure ♦ Short Sale

NICHOLAS REAL ESTATE AGENCY ♦ 1624 MAIN AVENUE, CLIFTON, NJ. 07011 ♦ OFFICE: (973) 340-1202





www.NicholasRealEstateCommercial.com

♦ Commercial ♦ Residential ♦ Investment ♦ Foreclosure ♦ Short Sale