

# OFFERING MEMORANDUM

OFFICE FOR LEASE | 1515 WILSHIRE BLVD | LOS ANGELES, CALIFORNIA



COMPASS  
COMMERCIAL

JALILI  
COMMERCIAL GROUP

- Asking Rent \$22/Year Modified Gross
- 1,430 SF
- Private Conference Room
- 10 Cubicles
- Kitchen/Breakroom
- Four Designated Garage Parking Spaces
- Common Area Restroom







WILSHIRE VALENCIA .COM (213) 320-6355

COMPASS  
COMMERCIAL

JALILI  
COMMERCIAL GROUP

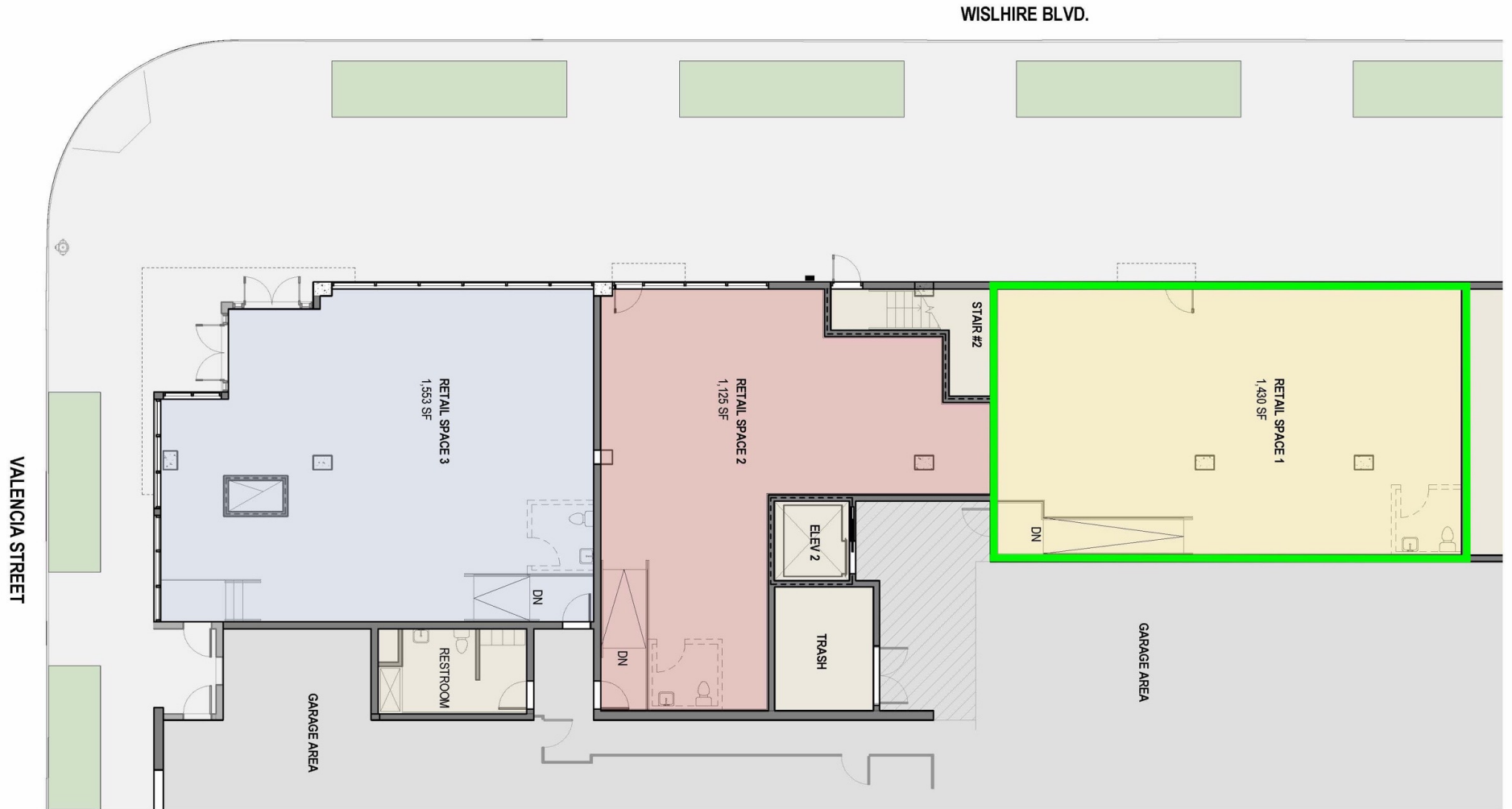
NOW  
LEASING



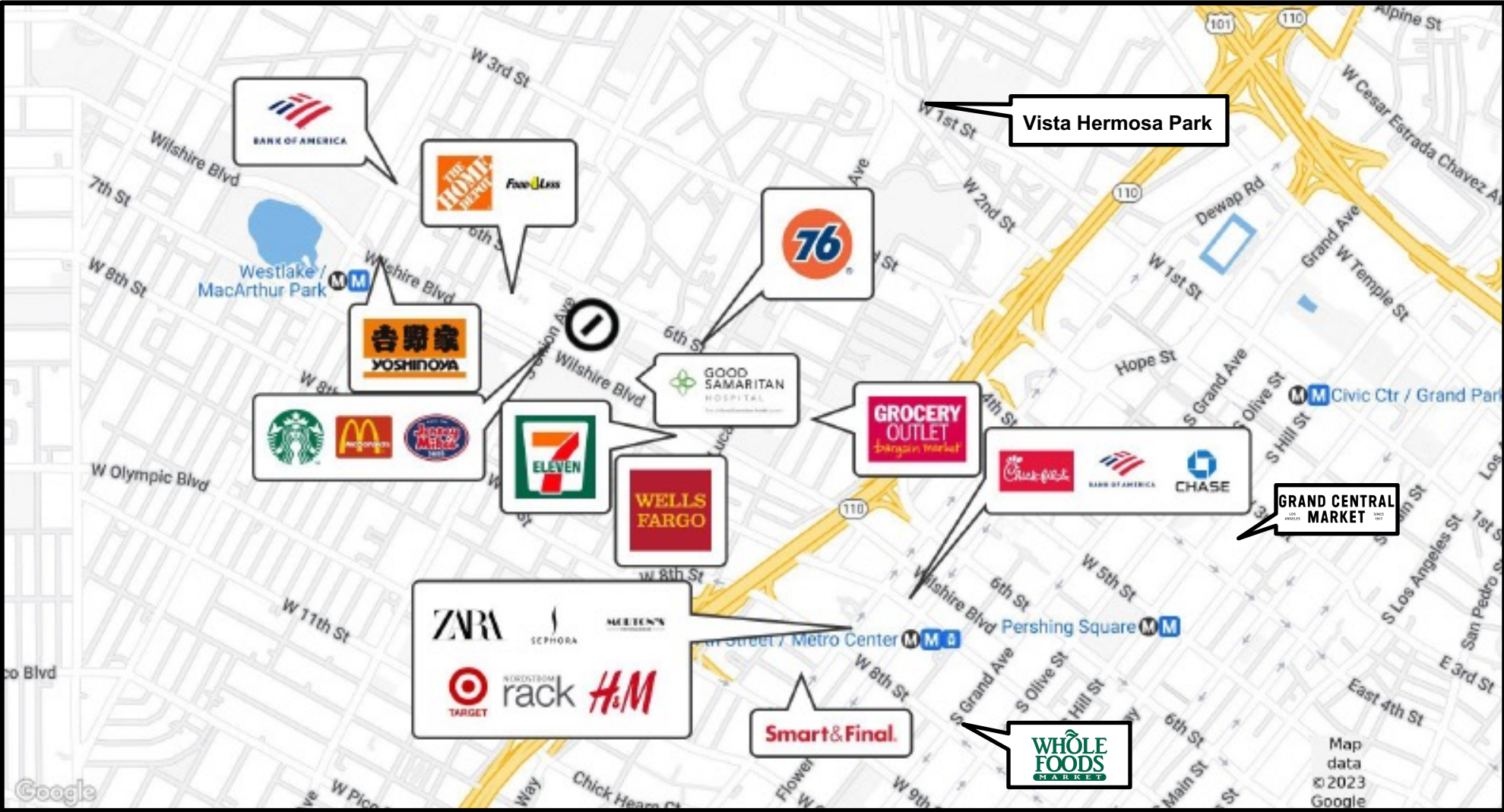
COMPASS  
COMMERCIAL

JALILI  
COMMERCIAL GROUP

# FLOOR PLAN



# RETAILER MAP



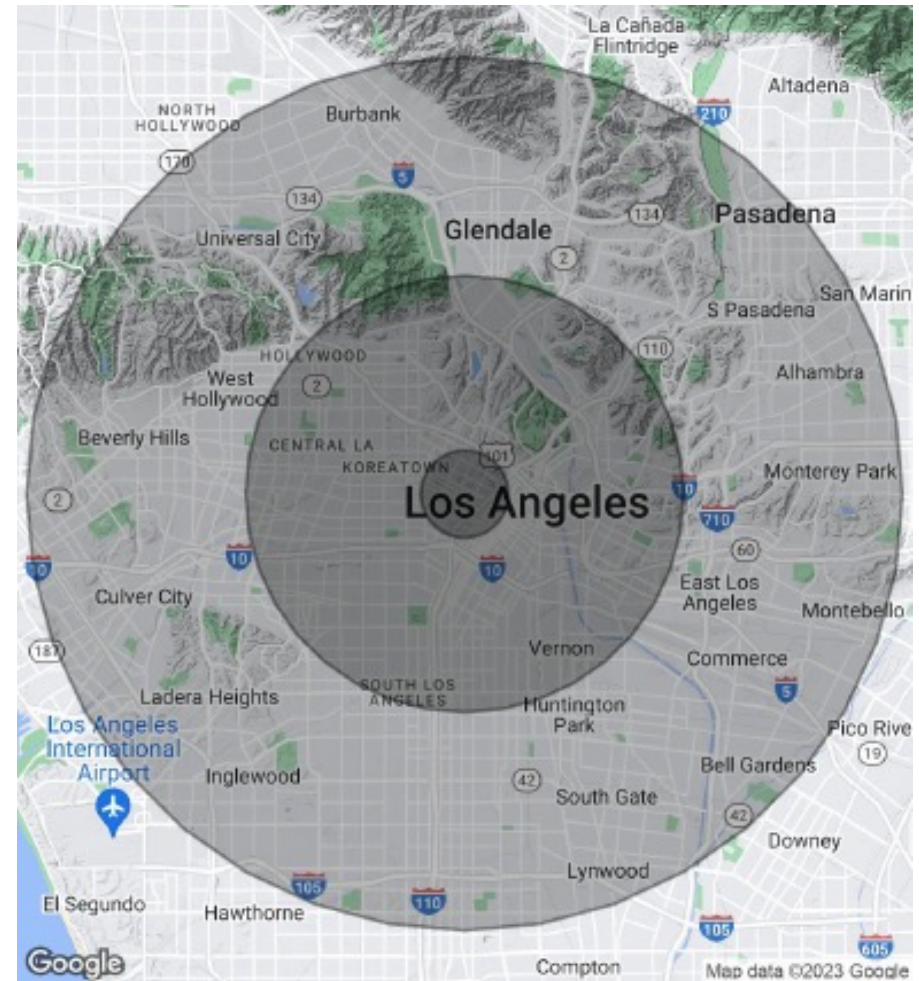


# DEMOGRAPHICS MAP & REPORT

| <b>Population</b>    | <b>1 Mile</b> | <b>5 Miles</b> | <b>10 Miles</b> |
|----------------------|---------------|----------------|-----------------|
| Total Population     | 110,931       | 1,252,161      | 3,536,367       |
| Average Age          | 33.8          | 34.9           | 36.2            |
| Average Age (Male)   | 33.1          | 34.1           | 35.1            |
| Average Age (Female) | 34.6          | 36.0           | 37.3            |

| <b>Households &amp; Income</b> | <b>1 Mile</b> | <b>5 Miles</b> | <b>10 Miles</b> |
|--------------------------------|---------------|----------------|-----------------|
| Total Households               | 46,828        | 478,507        | 1,332,966       |
| # of Persons per HH            | 2.4           | 2.6            | 2.7             |
| Average HH Income              | \$54,837      | \$70,617       | \$84,181        |
| Average House Value            | \$220,680     | \$516,559      | \$627,810       |



## CONFIDENTIALITY & DISCLAIMER

All materials, agents, advisors, affiliates and/or any third party sources are provided without representation or warranty as to completeness, veracity, or accuracy, condition of the property, compliance or lack of compliance with applicable governmental requirements, developability or suitability, financial performance of the property, projected financial performance of the property for any party's intended use or any and all other matters.

Neither Compass Commercial -San Francisco & Los Angeles its directors, officers, agents, advisors, or affiliates makes any representation or warranty, express or implied, as to accuracy or completeness of the any materials or information provided, derived, or received. Materials and information from any source, whether written or verbal, that may be furnished for review are not a substitute for a party's active conduct of its own due diligence to determine these and other matters of significance to such party. Compass Commercial -San Francisco & Los Angeles will not investigate or verify any such matters or conduct due diligence for a party unless otherwise agreed in writing.

### EACH PARTY SHALL CONDUCT ITS OWN INDEPENDENT INVESTIGATION AND DUE DILIGENCE

Any party contemplating or under contract or in escrow for a transaction is urged to verify all information and to conduct their own inspections and investigations including through appropriate third party independent professionals selected by such party. All financial data should be verified by the party including by obtaining and reading applicable documents and reports and consulting appropriate independent professionals. Compass Commercial -San Francisco & Los Angeles makes no warranties and/or representations regarding the veracity, completeness, or relevance of any financial data or assumptions. Compass Commercial -San Francisco & Los Angeles does not serve as a financial advisor to any party regarding any proposed transaction. All data and assumptions regarding financial performance, including that used for financial modeling purposes, may differ from actual data or performance. Any estimates of market rents and/or projected rents that may be provided to a party do not necessarily mean that rents can be established at or increased to that level. Parties must evaluate any applicable contractual and governmental limitations as well as market conditions, vacancy factors and other issues in order to determine rents from or for the property.

Legal questions should be discussed by the party with an attorney. Tax questions should be discussed by the party with a certified public accountant or tax attorney. Title questions should be discussed by the party with a title officer or attorney. Questions regarding the condition of the property and whether the property complies with applicable governmental requirements should be discussed by the party with appropriate engineers, architects, contractors, other consultants and governmental agencies. All properties and services are marketed by Compass Commercial -San Francisco & Los Angeles in compliance with all applicable fair housing and equal opportunity laws. Is and information received or derived from Compass Commercial -San Francisco & Los Angeles its directors, officers.



Sam Jalili  
Executive Vice President  
408.316.2157  
Sam.Jalili@compass.com  
License: CA 02053100

Madison Crimi-DeMichele  
Senior Associate  
408.705.5842  
Madison.crimid@compass.com  
License: CA 02102723