



COMMERCIAL REAL ESTATE SERVICES

of SWFL, INC.

CARLOS ACOSTA, CCIM

239.823.0115
cacosta@ccim.net



FOR SALE

BUSINESS DEVELOPMENT

2630 SW 8TH PL

2707 SW 8TH CT

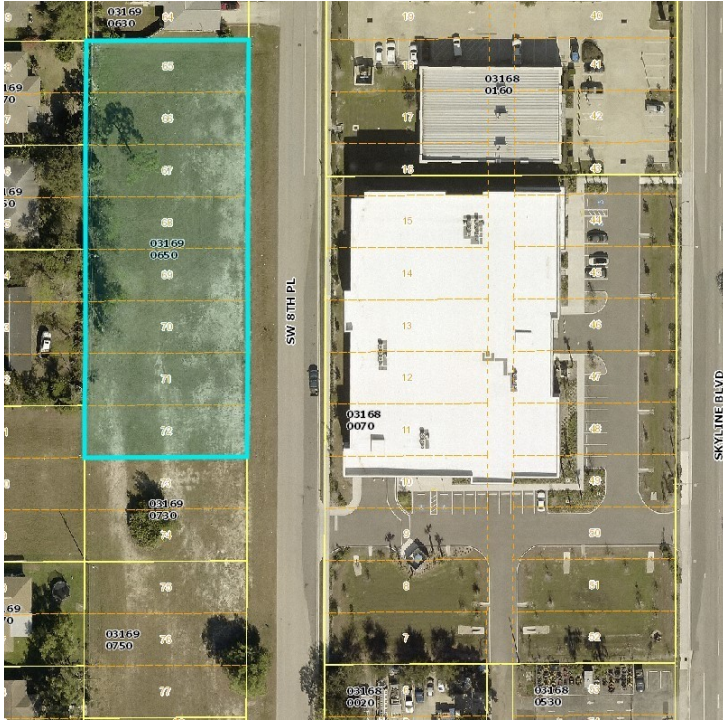
CAPE CORAL, FL 33914

2630 SW 8TH PL CAPE CORAL, FL 33914



Property Summary

FOR SALE



COMBINED SALE PRICE **\$514,000**

OFFERING SUMMARY

Total Lot Size: 1.26 Acres

Price / SF: \$9.36

DEMOGRAPHICS

	0.25 MILES	0.5 MILES	1 MIL
Total Population	490	1,915	7,57
Total Households	221	877	3,53
Median Age	49.5	50.1	51
Average HH Income	\$74,828	\$70,615	\$65,66

PROPERTY OVERVIEW

Two Lots Being Sold as One Unit

2630 SW 8th Pl - 0.92 Acre lot located South of The Home Depot and West of 7-11 and The Dollar Tree and O'Reilly Auto Parts

2707 SW 8th Ct - 0.34 Acres adjacent to the west from 2630 SW 8th Pl



CARLOS ACOSTA, CCIM
239.823.0115
cacosta@ccim.net

CREC Commercial Real Estate Services of SWFL, INC
1490 NE Pine Island Rd Suite 6F • Cape Coral, FL 33909
239.980.0081 • cresswfl.com

2707 SW 8TH CT CAPE CORAL, FL 33914



Property Summary

FOR SALE



COMBINED SALE PRICE **\$514,000**

OFFERING SUMMARY

Total Lot Size: 1.26 Acres

Price / SF: \$9.36

DEMOGRAPHICS

	0.25 MILES	0.5 MILES	1 MIL
Total Population	490	1,915	7,57
Total Households	221	877	3,53
Median Age	49.5	50.1	51
Average HH Income	\$74,828	\$70,615	\$65,66

PROPERTY OVERVIEW

Two Lots Being Sold as One Unit

2707 SW 8th Ct - 0.34 Acres adjacent to the west from 2630 SW 8th Pl

2630 SW 8th Pl - 0.92 Acre lot located South of The Home Depot and West of 7-11 and The Dollar Tree and O'Reilly Auto Parts



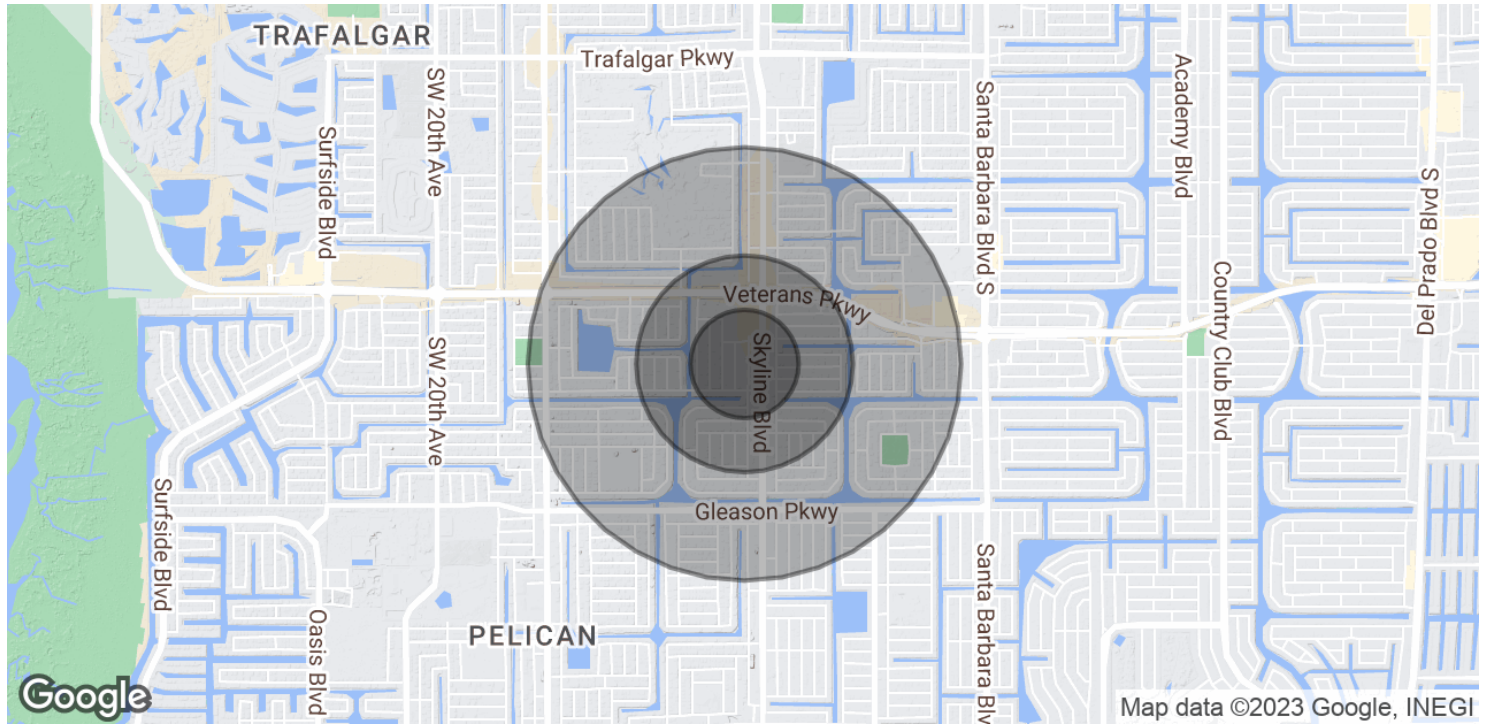
CARLOS ACOSTA, CCIM
239.823.0115
cacosta@ccim.net

CRES Commercial Real Estate Services of SWFL, INC
1490 NE Pine Island Rd Suite 6F • Cape Coral, FL 33909
239.980.0081 • cresswfl.com

2630 SW 8TH PL CAPE CORAL, FL 33914



Demographics Map & Report



POPULATION	0.25 MILES	0.5 MILES	1 MILE
Total Population	490	1,915	7,573
Average Age	49.5	50.1	51.0
Average Age (Male)	48.7	49.3	49.7
Average Age (Female)	48.3	48.4	49.2
HOUSEHOLDS & INCOME	0.25 MILES	0.5 MILES	1 MILE
Total Households	221	877	3,539
# of Persons per HH	2.2	2.2	2.1
Average HH Income	\$74,828	\$70,615	\$65,668
Average House Value	\$240,145	\$243,231	\$243,963

* Demographic data derived from 2020 ACS - US Census