

AVAILABLE For Sale

10 Acres - Industrial
Zoned Land

Washington Street
South of HWY 58

Bakersfield, CA



John A. Ritchie
Senior Vice President

661 616 3583 ▪ johnr@asuassociates.com
CA RE #00900552

11601 Bolthouse Drive Suite 110
Bakersfield, CA 93311
661 862 5454 main ▪ 661 862 5444 fax

The information contained herein may have been obtained from sources other than ASU Commercial. We have not verified such information and make no guarantees, warranties or representations about such information. It is your responsibility to independently confirm its accuracy and completeness prior to purchasing/leasing the property.

HIGHLIGHTS

- 10 Acres - Zoned Industrial
- City/County School Uses
- All utilities adjacent
- Freeway proximity

SITE

Washington Avenue

Available For Sale 10 Acres - Industrial Zoned Land

Property Details

Washington Street South of HWY 58
Bakersfield, CA



Property: Undeveloped Land
Zone: M-1 County of Kern
Sale Price: \$1,750,000 (\$4.00 PSF)

UTILITIES

- Electric: PG&E
- Gas: PG&E
- Water: City of Bakersfield
- Sewer: City of Bakersfield



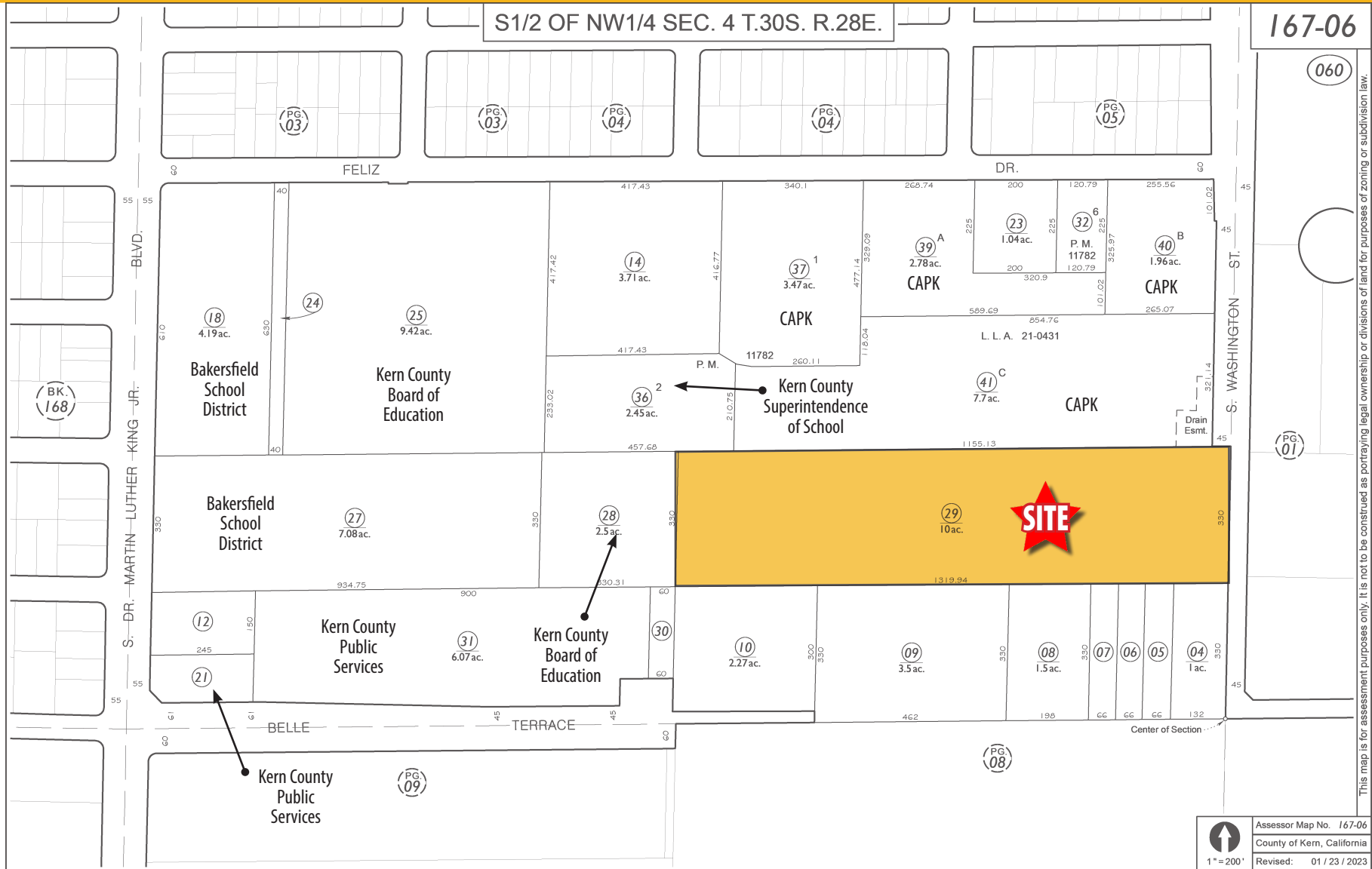
John A. Ritchie - Senior Vice President - 661 616 3583 - johnr@asuassociates.com - CA RE #00900552
11601 Bolthouse Drive Suite 110 - Bakersfield, CA 93311 - 661 862 5454 main - 661 862 5444 fax

Available For Sale

10 Acres - Industrial Zoned Land

Parcel Map

Washington Street South of HWY 58
Bakersfield, CA



This map is for assessment purposes only. It is not to be construed as portraying legal ownership or divisions of land for purposes of zoning or subdivision law.



John A. Ritchie • Senior Vice President • 661 616 3583 • johnr@asuassociates.com • CA RE #00900552
11601 Bolthouse Drive Suite 110 • Bakersfield, CA 93311 • 661 862 5454 main • 661 862 5444 fax

Available For Sale 10 Acres - Industrial Zoned Land

Nearby Development

Washington Street South of HWY 58
Bakersfield, CA

