

155-157-159 Chrystie Street

Lower East Side
New York, NY



CAPIN & ASSOCIATES

REAL ESTATE INVESTMENT AND CONSULTING, LICENSED BROKERS

36 Maple Place Suite 303 Manhasset, NY 11030 | Tel: 212.727.9550 Fax: 212.727.9551

Property Details

Location

West block between Delancey and Rivington Streets

Approximate Size

Space A (155 Chrystie Street)	
Ground Floor	1,241 SF
Parlor Floor	1,075 SF
Space B (157 Chrystie Street)	
Ground Floor	1,217 SF
Parlor Floor	954 SF
Space C (159 Chrystie Street)	
Ground Floor	1,080 SF
Parlor Floor	1,012 SF

Possession

Immediate

Term

Negotiable

Frontage

Space A	25 FT on Chrystie St.
Space B	24 FT on Chrystie St.
Space C	20 FT on Chrystie St.

Site Status

Space A	Formerly Boutique (Ground Floor) Formerly Sammy's Restaurant Kitchen (Parlor Floor)
Space B	Formerly Sammy' Roumanian Steakhouse Restaurant
Space C	Currently Vacant (Ground Floor) Formerly Boutique (Parlor Floor)

Neighbors

Daily Paper, Supreme, Freeman's Sporting Club, The Public Hotel, Citizen M Hotel, Dixon Place, Rochelle's, The Box, New Museum, The Butcher's Daughter and The Vig Bar

Comments

- Opportunities from 954 to 6,579 square feet
- The Ground Floor at 155 Chrystie Street and the Parlor Floor at 157 Chrystie Street both have full kitchen installations
- One-of-a-kind Manhattan opportunity with a 3,000-SF backyard ideal for food and beverage operators as well as sculpture galleries
- Directly next to Daily Paper and part of New York's streetwear corridor as well as trendy galleries, boutiques, outstanding restaurants and upscale hotels
- All uses considered
- Brand new storefronts
- Steps from Ian Schrager's Public Hotel, citizen M Hotel and Sister City by Ace Hotel
- In close proximity to Essex Crossing with 1.8 million SF of mixed-use retail, residential and commercial space

CAPIN & ASSOCIATES
REAL ESTATE INVESTMENT AND CONSULTING, LICENSED BROKERS

36 Maple Place Suite 303 Manhasset, NY 11030 | Tel: 212.727.9550 Fax: 212.727.9551

155-157-159 Chrystie Street

SPACE A



155 CHRYSTIE STREET

SIZE: 1,075 SF Ground Floor
+ 1,241 SF Basement

FRONTAGE: 42 Feet

CEILING HEIGHT: 10 Feet

POSSESSION: Immediate

SPACE B



157 CHRYSTIE STREET

SIZE: 954 SF Ground Floor
+ 1,217 SF Basement

FRONTAGE: 42 Feet

CEILING: 10 Feet

POSSESSION: Immediate

SPACE C



159 CHRYSTIE STREET

SIZE: 1,012 SF Ground Floor
+ 1,080 SF Basement

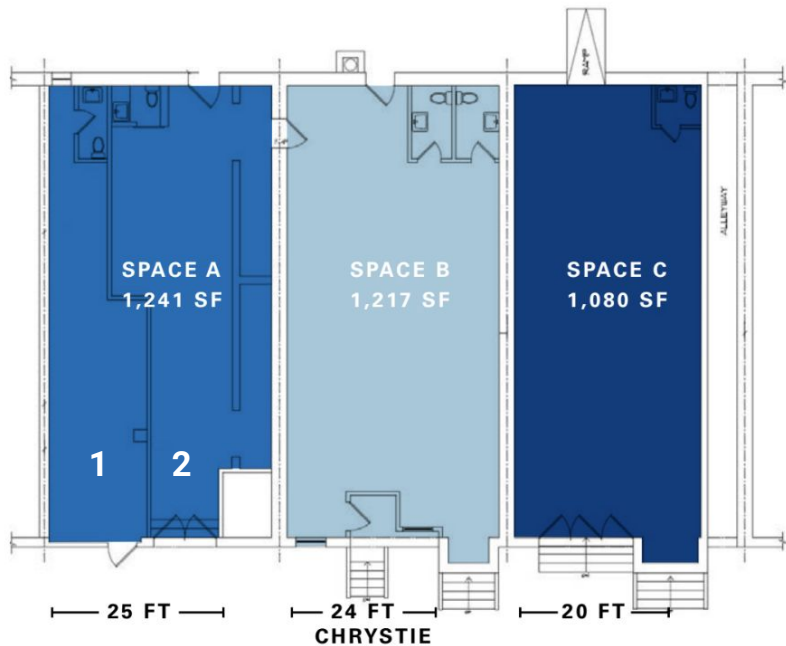
FRONTAGE: 13.5 Feet

CEILING: 10 Feet

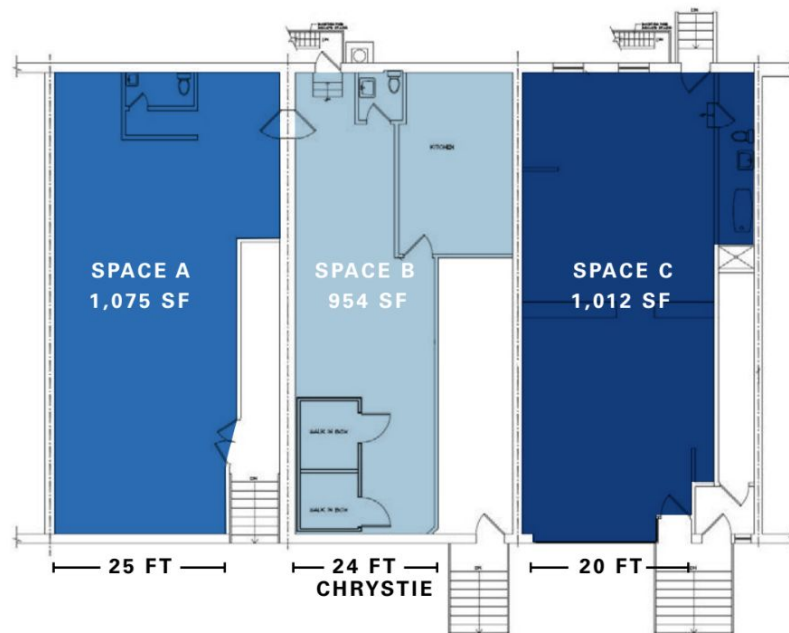
POSSESSION: Immediate

Floor Plan

Parlor Floor



Ground Floor



Backyard Area

CAPIN & ASSOCIATES
REAL ESTATE INVESTMENT AND CONSULTING, LICENSED BROKERS

36 Maple Place Suite 303 Manhasset, NY 11030 | Tel: 212.727.9550 Fax: 212.727.9551



155-157-159 CHRYSTIE STREET

CAPIN & ASSOCIATES

REAL ESTATE INVESTMENT AND CONSULTING, LICENSED BROKERS

36 Maple Place Suite 303 Manhasset, NY 11030 | Tel: 212.727.9550 Fax: 212.727.9551

Isaac Kohannim
Vice President
212.727.9550 Ext. 111
Cell: 516.860.4708
reismytea@gmail.com

Ariella Kohannim
Sales Associate
212.727.9550 Ext.110
Fax: 212.727.9551
akohannim.re@gmail.com



COMING SOON