

**PROFESSIONAL / MEDICAL OFFICE FOR LEASE**  
**1122 ROUTE 22**  
**MOUNTAINSIDE, NJ 07092**



**PROPERTY OVERVIEW**

**BUILDING SIZE:** ± 20,000 SF

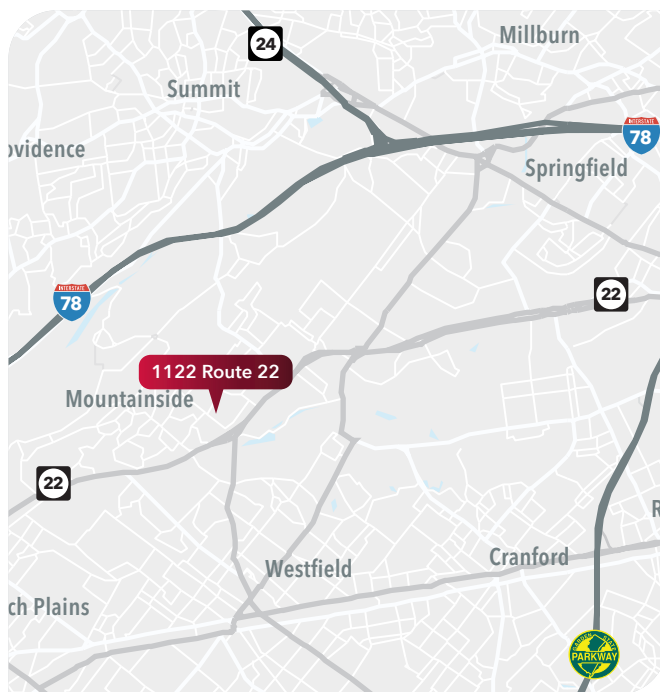
**AVAILABLE SPACE:** Suite 204 - 1,500 SF

**BUILDING TYPE:** 2 Stories

**RENTAL RATE:** \$23.50 MG

**COMMENTS:**

- Excellent visibility
- Numerous local amenities
- Corner Unit
- Great window line
- Kitchenette
- Security System
- Each suite has HVAC controls
- Updated foyers & bathrooms
- Resurfaced parking lot and sidewalks



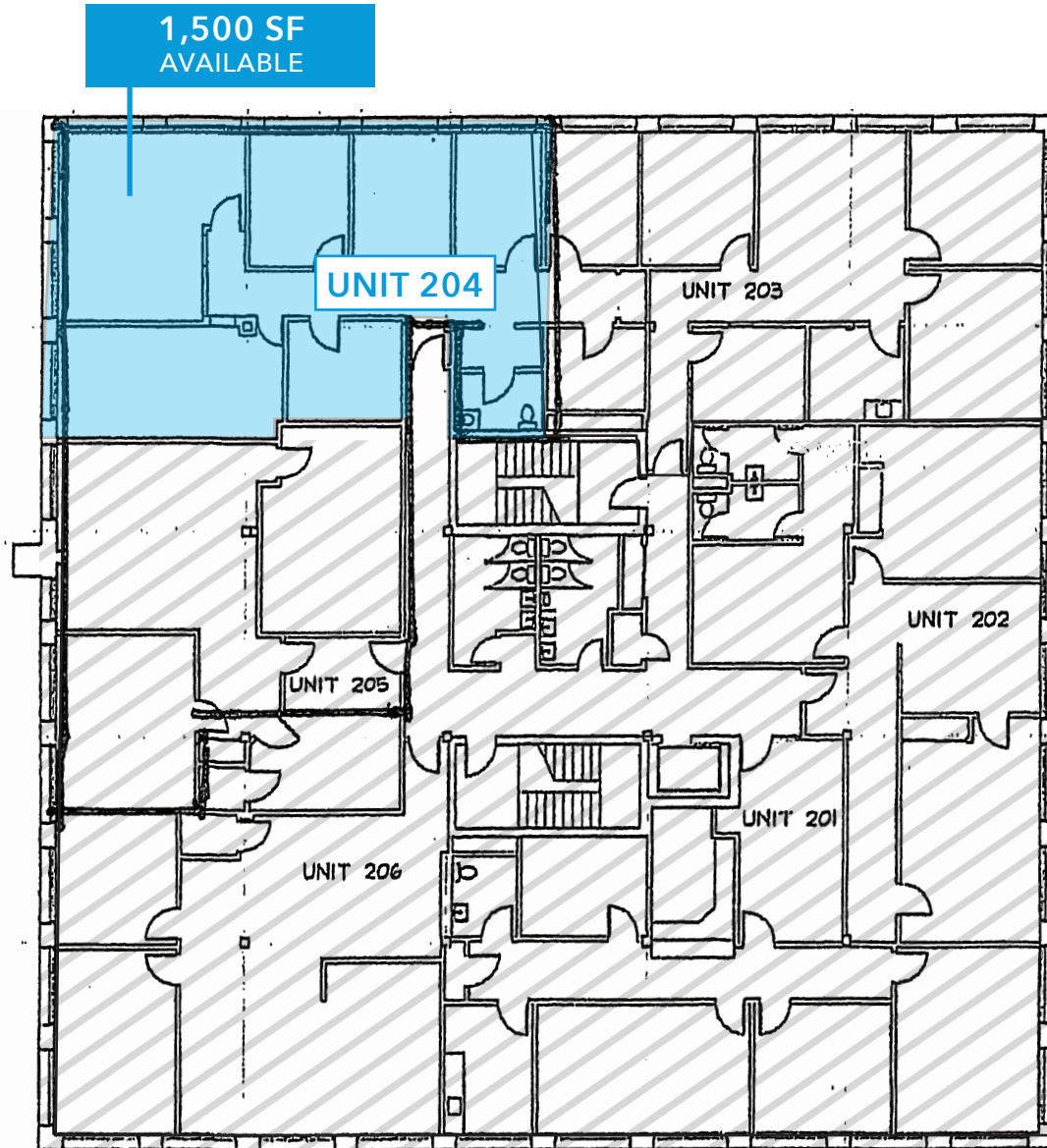
**TRAFFIC COUNT:** Route 22: 61,447 Daily Cars

**FOR MORE INFORMATION CONTACT EXCLUSIVE BROKER:**

Erica Davidson  
C 973.214.9733  
erica.davidson@lee-associates.com

All information furnished regarding property for sale, rental or financing is from sources deemed reliable, but no warranty or representation is made to the accuracy thereof and same is submitted to errors, omissions, change of price, rental or other conditions prior to sale, lease or financing or withdrawal without notice. Buyer acknowledges that Lee & Associates - WBE, LLC ("Broker") has not verified the information contained herein and does not make any representation about its accuracy. Buyer should confirm information contained in the Offering using its own sources. No liability of any kind is to be imposed on Broker herein.

FLOOR PLAN



FOR MORE INFORMATION CONTACT EXCLUSIVE BROKER:

Erica Davidson  
C 973.214.9733  
erica.davidson@lee-associates.com

All information furnished regarding property for sale, rental or financing is from sources deemed reliable, but no warranty or representation is made to the accuracy thereof and same is submitted to errors, omissions, change of price, rental or other conditions prior to sale, lease or financing or withdrawal without notice. Buyer acknowledges that Lee & Associates - WBE, LLC ("Broker") has not verified the information contained herein and does not make any representation about its accuracy. Buyer should confirm information contained in the Offering using its own sources. No liability of any kind is to be imposed on Broker herein.