

OFFICE/FLEX SPACE FOR LEASE

110-C Spaulding Street San Anselmo, California

±2,339 RSF \$2.10/RSF/MONTH, MODIFIED GROSS



NEWMARK

Joe McCallum

t 415-526-7672 | joe.mccallum@nmrk.com

CA RE LIC #02048815

Property Features

LOCATION

At the intersection of Sir Francis Drake Blvd, Red Hill Ave and Center Blvd, the property is centrally located in the heart of Downtown San Anselmo.

SUITE 110-C GROUND LEVEL

±2,339 RSF

\$2.10/RSF/Month, Modified Gross

DESCRIPTION

High ceiling, creative office/flex space. Suite features a kitchenette, built-out mezzanine and private restroom. PG&E meter is shared with ground floor tenants.

ZONING

C-L (Limited Commercial)

ALLOWED USES

An array of retail and personal services uses are allowed at the property as well as financial/real estate services. All uses are subject to confirmation with the Town of San Anselmo.

NEIGHBORS

Andronico's Community Market, Creekside Pizza & Tap Room, Taco Jane's, Taqueria Mi Familia, Kuro Nami Japanese Kitchen, Quick N Easy Market, Marin Coffee Roasters, Creek Park, and more.



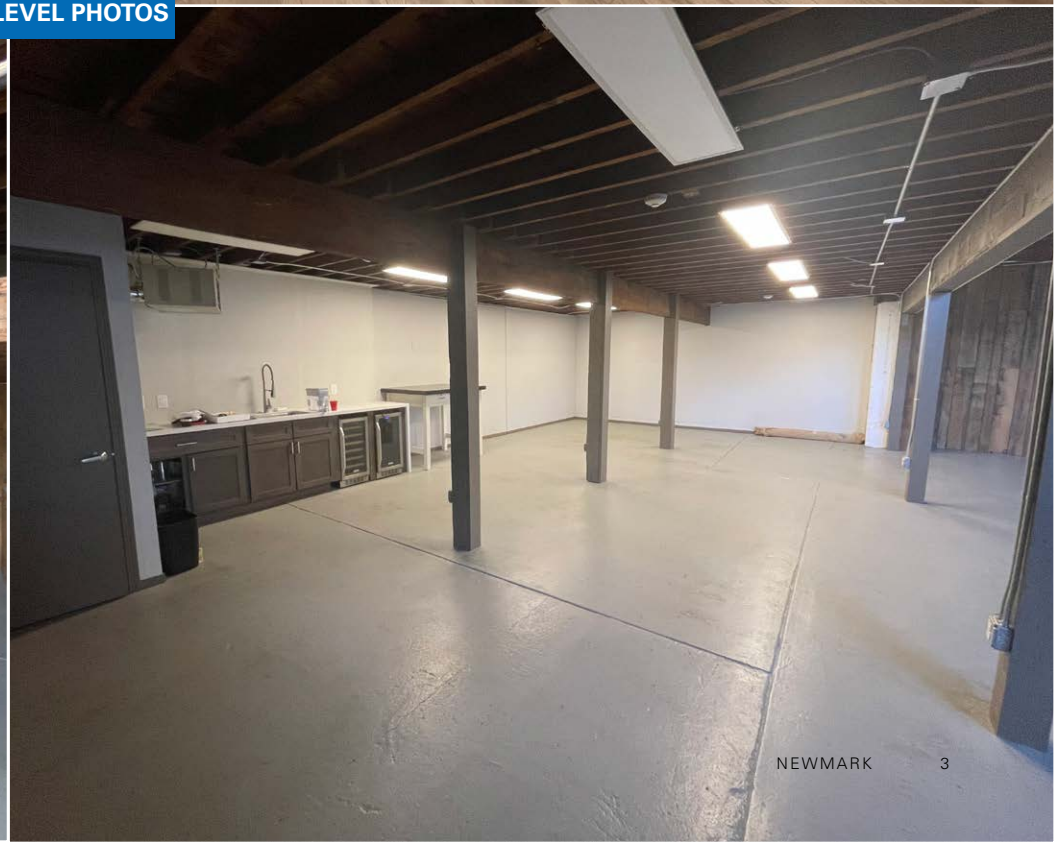
OFFICE/FLEX SPACE FOR LEASE



SPAULDING STREET, SAN ANSELMO, CA



SUITE 110-C
GROUND LEVEL PHOTOS



Amenities Map



110-C Spaulding Street San Anselmo, California

Exclusive agent:

Joe McCallum

t 415-526-7672

joe.mccallum@nrmk.com

CA RE LIC #02048815

1101 Fifth Avenue, Suite 370

San Rafael, CA 94901

T 415-526-7676

nrmk.com

The distributor of this communication is performing acts for which a real estate license is required. The information contained herein has been obtained from sources deemed reliable but has not been verified and no guarantee, warranty or representation, either express or implied, is made with respect to such information. Terms of sale or lease and availability are subject to change or withdrawal without notice. Last updated: April 3, 2026 5:16 PM

NEWMARK