

94 BRICK ROAD

MARLTON, NEW JERSEY



EXCLUSIVE SALE OFFERING ■ MEDICAL OFFICE BUILDING

49,904± SF MID-RISE OFFICE IN SOUTH JERSEY'S 3M MARKET

ATTRACTIVE LAND LEASE IN PLACE | OWNER FINANCING AVAILABLE (5%)



NAI Mertz | 21 Roland Avenue
Mount Laurel, NJ 08054
+1 856 234 9600 | naimertz.com

Rebecca Ting, SIOR
 +1 856 234 9600 ext
 rebecca.ting@naimertz.com

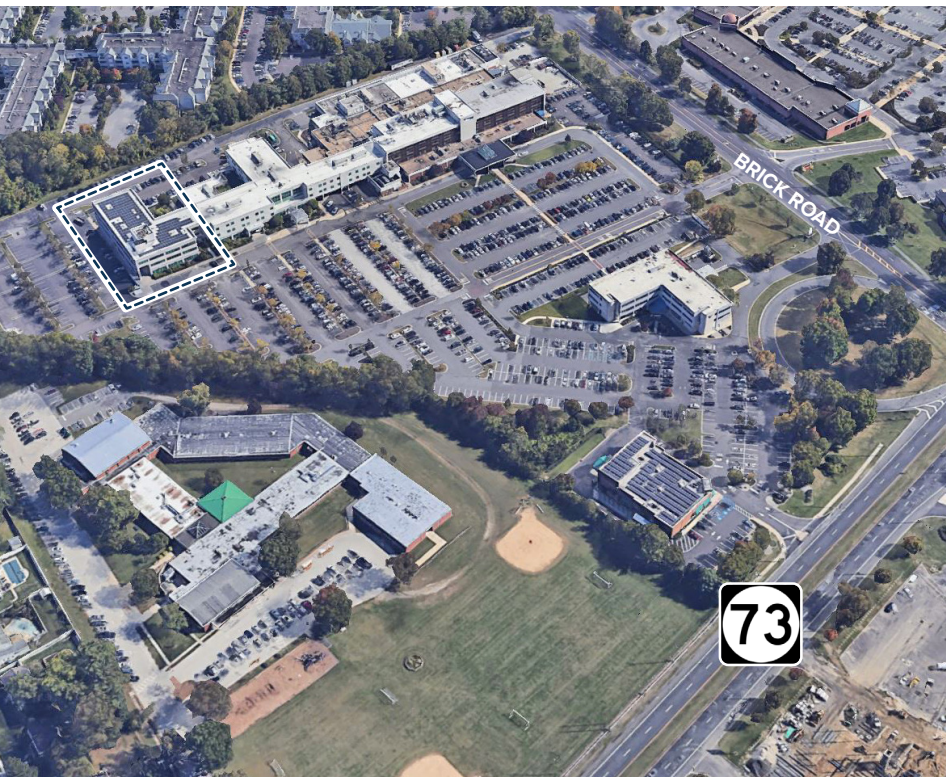
Julie Kronfeld, SIOR
 +1 856 802 6516
 julie.kronfeld@naimertz.com

NO WARRANTY OR REPRESENTATION, EXPRESS OR IMPLIED, IS MADE AS TO THE ACCURACY OF THE INFORMATION CONTAINED HEREIN, AND THE SAME IS SUBMITTED SUBJECT TO ERRORS, OMISSIONS, CHANGE OF PRICE, RENTAL OR OTHER CONDITIONS, PRIOR SALE, LEASE OR FINANCING, OR WITHDRAWAL WITHOUT NOTICE, AND OF ANY SPECIAL LISTING CONDITIONS IMPOSED BY OUR PRINCIPALS NO WARRANTIES OR REPRESENTATIONS ARE MADE AS TO THE CONDITION OF THE PROPERTY OR ANY HAZARDS CONTAINED THEREIN ARE ANY TO BE IMPLIED.

94 BRICK ROAD

49,904±
SQUARE FEET

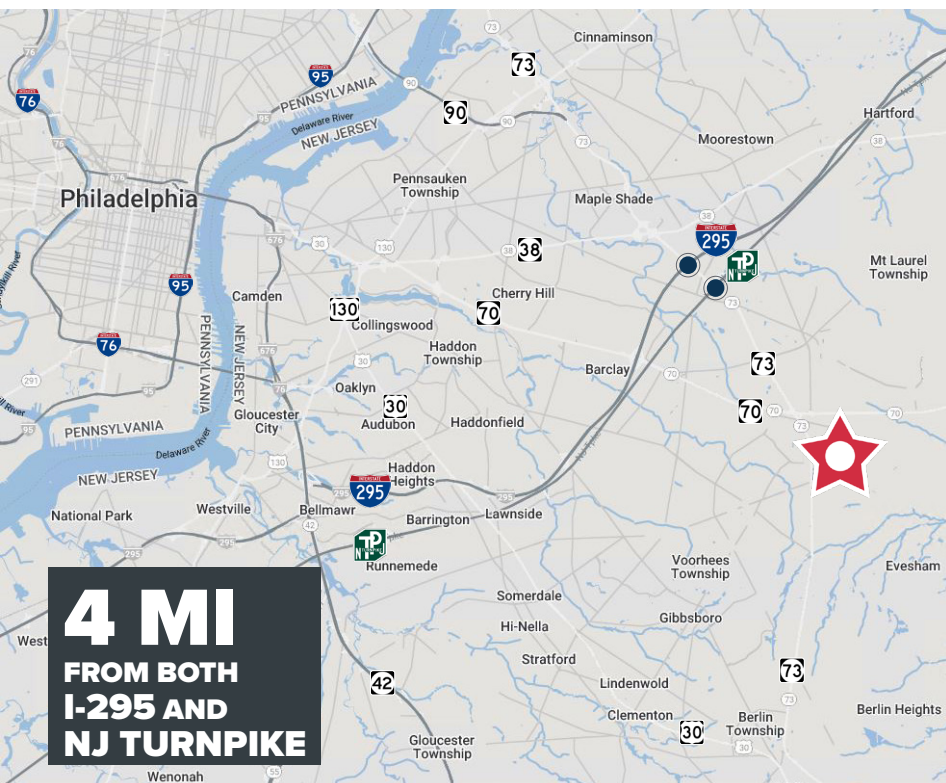
MEDICAL
OFFICE BUILDING



Prime office / medical space in South Jersey's sought after 3M market! Suites are available to accommodate any user - spaces range from 2,143± SF to 21,735± SF. Part of Virtua West Jersey Health System Marlton Campus with direct access to hospital and multiplex rehabilitation facility.

Located just off Route 73 with easy access to Route 70, I-295, and New Jersey Turnpike. Surrounded by numerous restaurants and retailers including the Promenade at Sagemore. 3 miles from Virtua Voorhees Hospital. 5 miles from Thomas Jefferson University Hospital at Voorhees.

Total SF	49,904±
Stories	3
Year Built	1996
Elevators	2
Parking Spaces	170
Zoning	Commercial



NAI Mertz | 21 Roland Avenue
Mount Laurel, NJ 08054
+1 856 234 9600 | naimertz.com

Rebecca Ting, SIOR
+1 856 234 9600 ext
rebecca.ting@naimertz.com

Julie Kronfeld, SIOR
+1 856 802 6516
julie.kronfeld@naimertz.com