



# *Retail / Office Development*

LAND FOR SALE OR GROUND LEASE

**4001 N FRONT STREET, HARRISBURG, PA**



4001 N FRONT STREET · HARRISBURG, PA 17104



RETAIL | OFFICE DEVELOPMENT LAND

FOR SALE OR  
GROUND LEASE

## OFFERING SUMMARY

Lot Size	1.11 Acres
Sale Price	\$695,000
Lease Price	\$ 65,000 per year
Lease Type	NNN
APN	62-015-286
Taxes	\$3,258.63
Zoning	Commercial Office Limited
Municipality	Susquehanna Township
County	Dauphin County

## PROPERTY OVERVIEW

Prime opportunity awaits at this exceptional 1.11-acre commercial parcel strategically positioned on N. Front Street, boasting unparalleled visibility and accessibility. With preliminary plans for a versatile development, including a spacious restaurant with a drive-thru or a sprawling one-story office building, the site offers boundless potential for savvy investors. Enjoying approximately 250 feet of frontage on N. Front Street and convenient secondary access from Parkway Road, this location is primed to capture the attention of the 24,000 daily commuters, drawn from affluent suburban areas, making it an ideal investment for those seeking to capitalize on strong demographics and high traffic volumes.



LANDMARK COMMERCIAL REALTY

425 N 21<sup>ST</sup> STREET, SUITE 302  
CAMP HILL, PA 17011

P : 717.731.1990

CHUCK HELLER, SIOR  
EXECUTIVE VICE PRESIDENT  
CHELLER@LandmarkCR.com  
C: 717.979.5619

NICK SALLACK  
SENIOR ASSOCIATE  
NSALLACK@LandmarkCR.com  
C: 717.829.4011



LANDMARKCR.COM



4001 N FRONT STREET · HARRISBURG, PA 17104

RETAIL | OFFICE DEVELOPMENT LAND

FOR SALE OR  
GROUND LEASE

CONCEPTUAL SITE PLAN - PROPOSED 1 STORY OFFICE



LANDMARK COMMERCIAL REALTY

425 N 21<sup>ST</sup> STREET, SUITE 302  
CAMP HILL, PA 17011

P : 717.731.1990

CHUCK HELLER, SIOR  
EXECUTIVE VICE PRESIDENT  
CHELLER@LandmarkCR.com  
C: 717.979.5619

NICK SALLACK  
SENIOR ASSOCIATE  
NSALLACK@LandmarkCR.com  
C: 717.829.4011

LANDMARKCR.COM

TCN  
WORLDWIDE  
REAL ESTATE SERVICES

2

4001 N FRONT STREET · HARRISBURG, PA 17104

RETAIL | OFFICE DEVELOPMENT LAND

FOR SALE OR  
GROUND LEASE

CONCEPTUAL SITE PLAN - PROPOSED DRIVE THRU RESTAURANT



LANDMARK COMMERCIAL REALTY

425 N 21<sup>ST</sup> STREET, SUITE 302  
CAMP HILL, PA 17011

P : 717.731.1990

CHUCK HELLER, SIOR  
EXECUTIVE VICE PRESIDENT

CHELLER@LandmarkCR.com  
C: 717.979.5619

NICK SALLACK  
SENIOR ASSOCIATE

NSALLACK@LandmarkCR.com  
C: 717.829.4011

LANDMARKCR.COM

TCN  
WORLDWIDE  
REAL ESTATE SERVICES

3



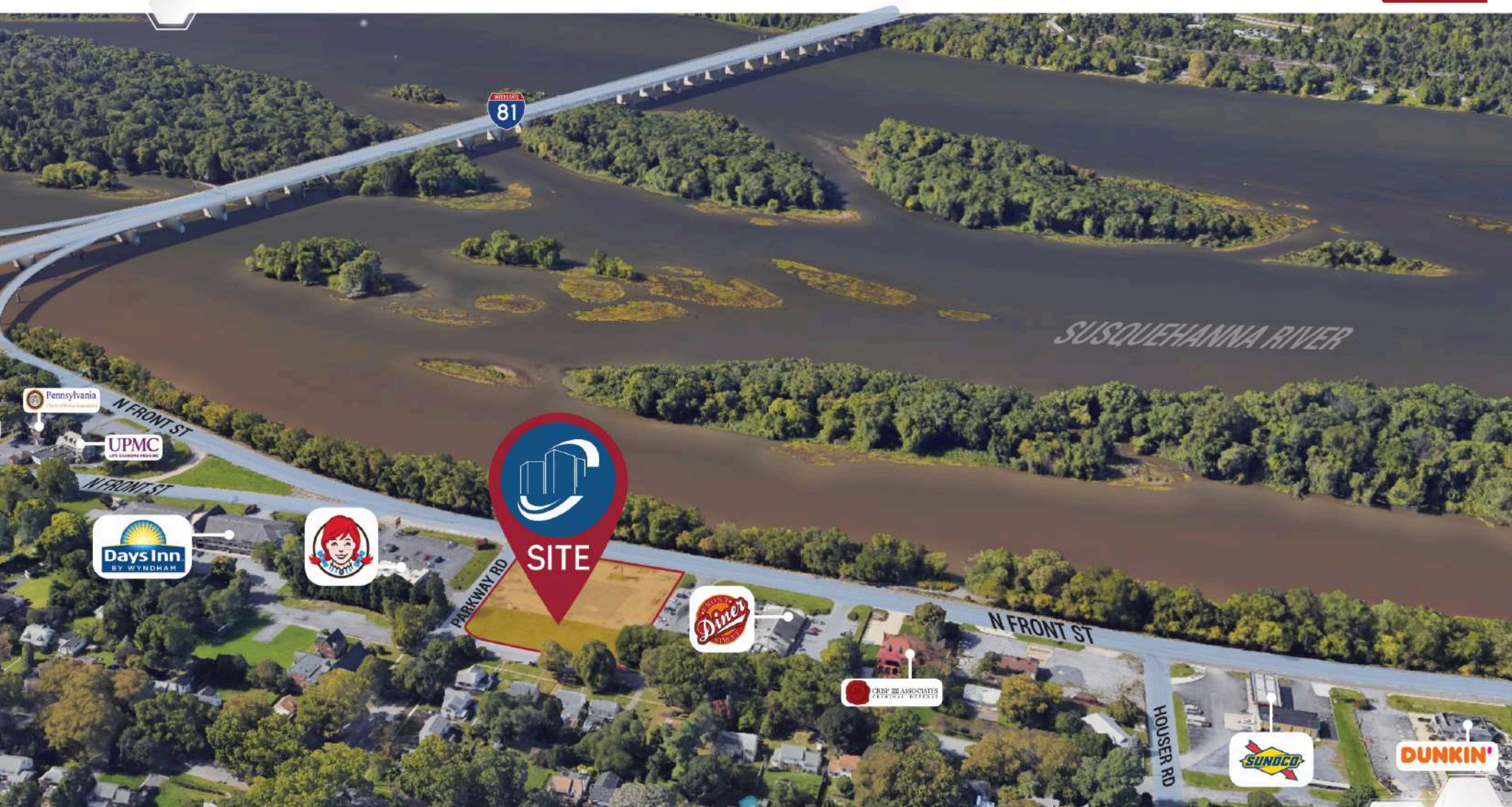
4001 N FRONT STREET · HARRISBURG, PA 17104



RETAIL | OFFICE DEVELOPMENT LAND

FOR SALE OR  
GROUND LEASE

LOCATION



LANDMARK COMMERCIAL REALTY

425 N 21<sup>ST</sup> STREET, SUITE 302  
CAMP HILL, PA 17011

P : 717.731.1990

CHUCK HELLER, SIOR  
EXECUTIVE VICE PRESIDENT

CHELLER@LandmarkCR.com  
C : 717.979.5619

NICK SALLACK  
SENIOR ASSOCIATE

NSALLACK@LandmarkCR.com  
C : 717.829.4011

LANDMARKCR.COM

TCN  
WORLDWIDE  
REAL ESTATE SERVICES

4

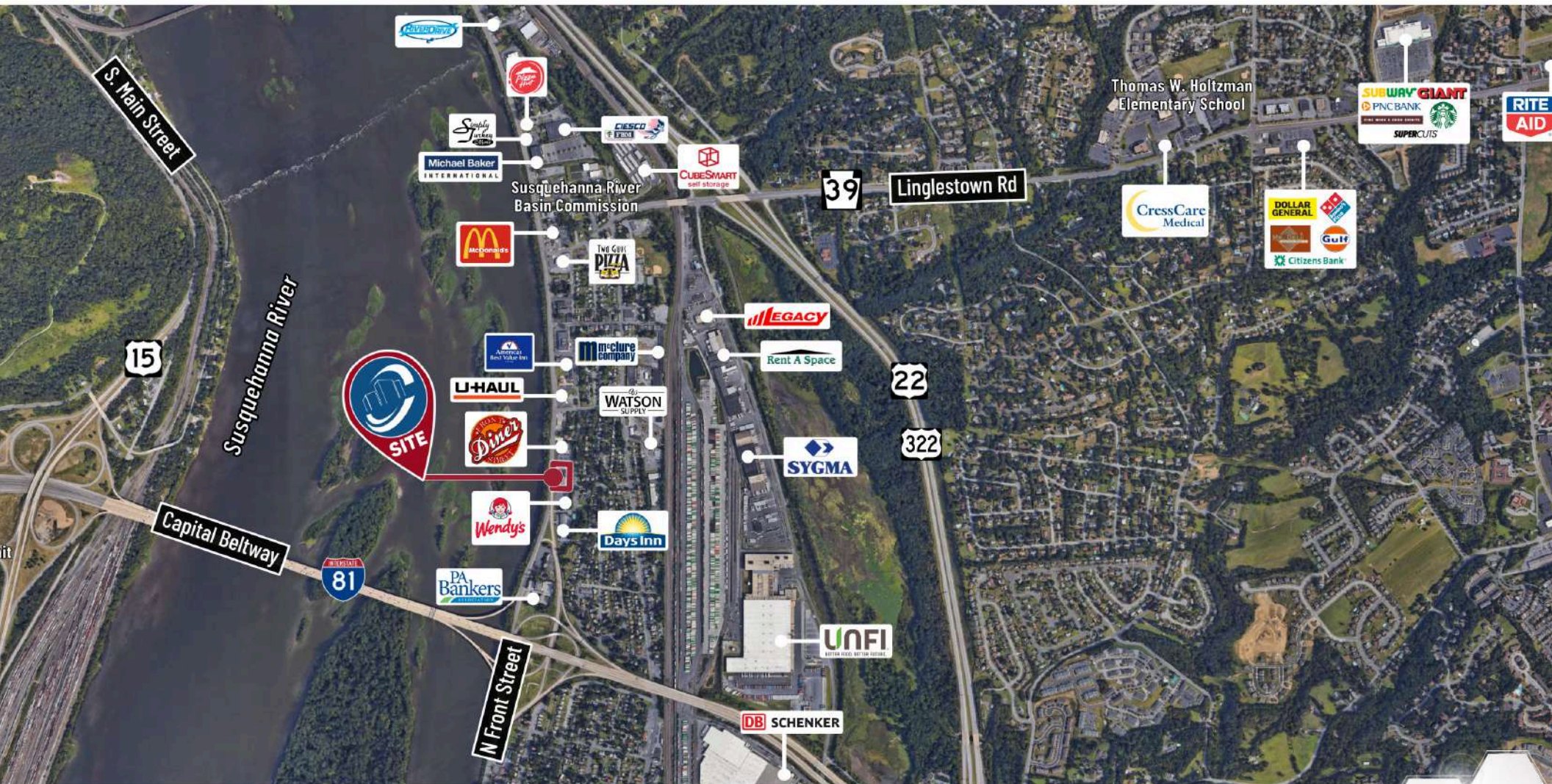


4001 N FRONT STREET · HARRISBURG, PA 17104

RETAIL | OFFICE DEVELOPMENT LAND

FOR SALE OR  
GROUND LEASE

AREA



LANDMARK COMMERCIAL REALTY

425 N 21<sup>ST</sup> STREET, SUITE 302  
CAMP HILL, PA 17011

P : 717.731.1990

CHUCK HELLER, SIOR  
EXECUTIVE VICE PRESIDENT  
CHELLER@LandmarkCR.com  
C : 717.979.5619

NICK SALLACK  
SENIOR ASSOCIATE  
NSALLACK@LandmarkCR.com  
C : 717.829.4011

LANDMARKCR.COM

TCN  
WORLDWIDE  
REAL ESTATE SERVICES

5



4001 N FRONT STREET · HARRISBURG, PA 17104



RETAIL | OFFICE DEVELOPMENT LAND

FOR SALE OR  
GROUND LEASE

DEMOGRAPHICS

#### POPULATION

1 MILE	2,442
3 MILE	41,285
5 MILE	138,267

#### HOUSEHOLDS

1 MILE	1,015
3 MILE	18,075
5 MILE	59,596

#### AVERAGE HOUSEHOLD INCOME

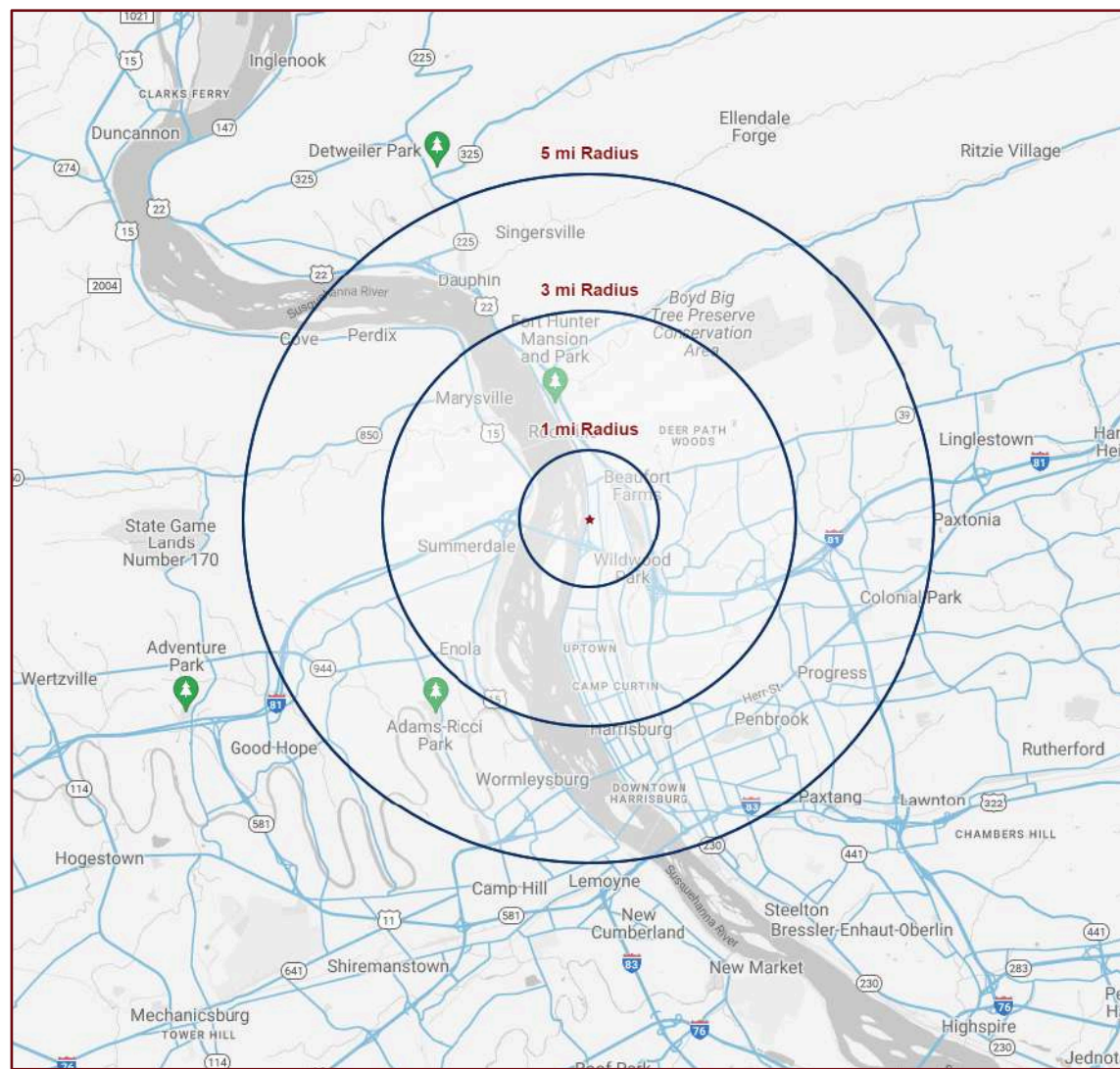
1 MILE	\$103,577
3 MILE	\$103,291
5 MILE	\$97,383

#### TOTAL BUSINESSES

1 MILE	144
3 MILE	1,758
5 MILE	6,109

#### TOTAL EMPLOYEES (DAYTIME POPULATION)

1 MILE	2,353
3 MILE	27,501
5 MILE	101,184



LANDMARK COMMERCIAL REALTY

425 N 21<sup>ST</sup> STREET, SUITE 302  
CAMP HILL, PA 17011

P : 717.731.1990

CHUCK HELLER, SIOR  
EXECUTIVE VICE PRESIDENT  
CHELLER@LandmarkCR.com  
C: 717.979.5619

NICK SALLACK  
SENIOR ASSOCIATE  
NSALLACK@LandmarkCR.com  
C: 717.829.4011



LANDMARKCR.COM

4001 N FRONT STREET · HARRISBURG, PA 17104

RETAIL | OFFICE DEVELOPMENT LAND

FOR SALE OR  
GROUND LEASE



### AREA OVERVIEW

Nestled within the heart of Dauphin County, **HARRISBURG**, the Capital City, serves as a vibrant urban center. As a hub for culture, business, and government, Harrisburg has been the county seat since 1785 and Pennsylvania's capital since 1812. The city's picturesque location along the Susquehanna River and its backdrop of the Blue Ridge Mountains combines big city influence and sophistication with small-town charm. The impressive Capitol dome dominates the skyline, making it an iconic architectural landmark.

Harrisburg's strategic location offers easy access to major metropolitan areas, including Baltimore, Philadelphia, and Washington, D.C., all within a 90-minute to 2-hour drive. For those seeking the excitement of New York City, Harrisburg provides a direct three-hour train ride. Additionally, Harrisburg International Airport offers convenient travel options, many of which are direct flights to various destinations, enhancing accessibility for both residents and businesses.



## HARRISBURG DEMOGRAPHICS



POPULATION

50,730



HOUSEHOLDS

21,818



AVG HH INCOME

\$66,864



MEDIAN AGE

32.0



BUSINESSES

2,538



EMPLOYEES

52,337

LANDMARK COMMERCIAL REALTY  
425 N 21<sup>ST</sup> STREET, SUITE 302  
CAMP HILL, PA 17011  
P : 717.731.1990

CHUCK HELLER, SIOR  
EXECUTIVE VICE PRESIDENT  
CHELLER@LandmarkCR.com  
C: 717.979.5619

NICK SALLACK  
SENIOR ASSOCIATE  
NSALLACK@LandmarkCR.com  
C: 717.829.4011

LANDMARKCR.COM

TCN  
WORLDWIDE  
REAL ESTATE SERVICES

7

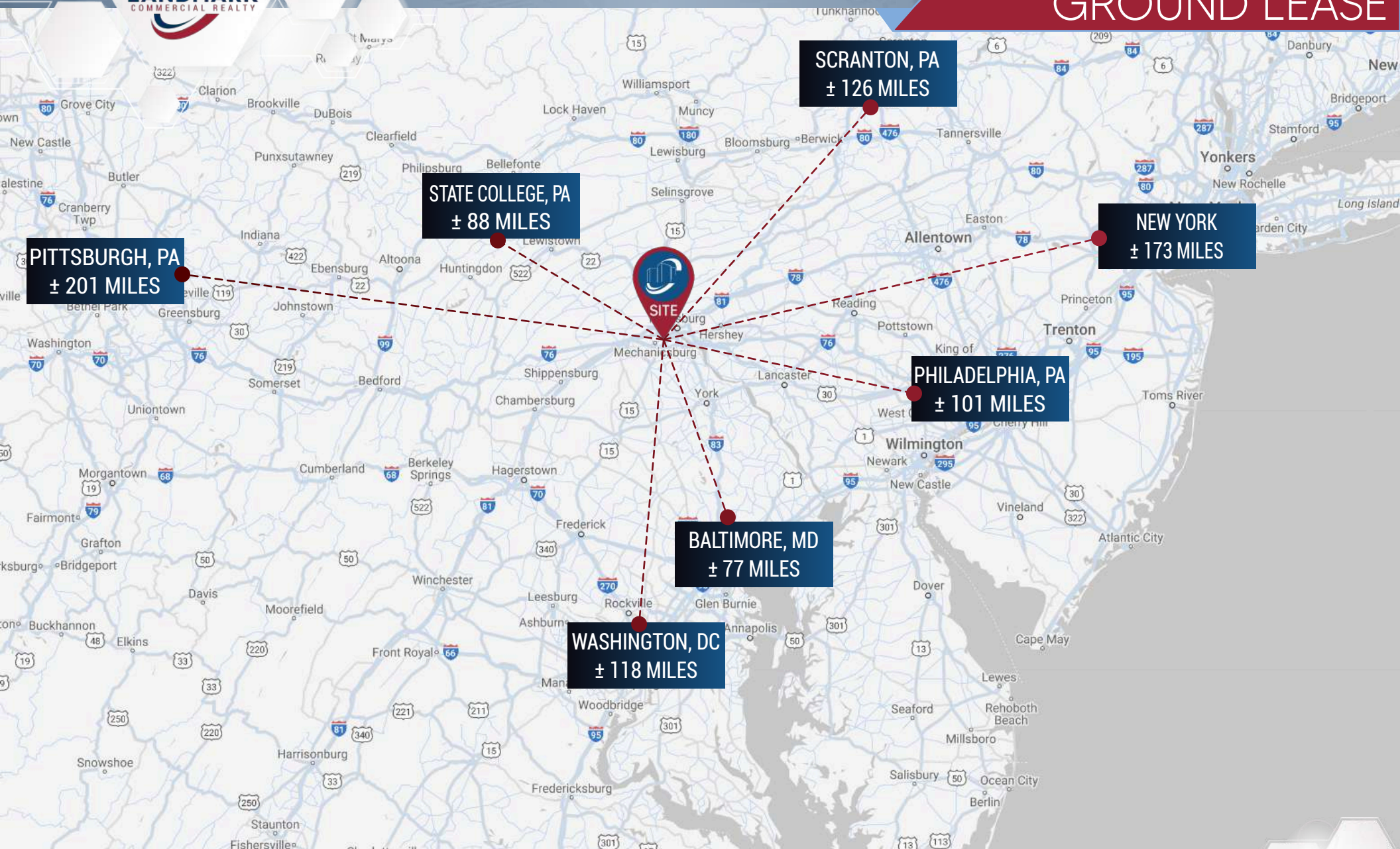


4001 N FRONT STREET · HARRISBURG, PA 17104



RETAIL | OFFICE DEVELOPMENT LAND

FOR SALE OR  
GROUND LEASE



LANDMARK COMMERCIAL REALTY

425 N 21<sup>ST</sup> STREET, SUITE 302  
CAMP HILL, PA 17011

P : 717.731.1990

CHUCK HELLER, SIOR  
EXECUTIVE VICE PRESIDENT  
CHELLER@LandmarkCR.com  
C: 717.979.5619

NICK SALLACK  
SENIOR ASSOCIATE  
NSALLACK@LandmarkCR.com  
C: 717.829.4011



LANDMARKCR.COM





CONFIDENTIALITY & DISCLAIMER

All materials and information received or derived from Landmark Commercial its directors, officers, agents, advisors, affiliates and/or any third party sources are provided without representation or warranty as to completeness, veracity, or accuracy, condition of the property, compliance or lack of compliance with applicable governmental requirements, developability or suitability, financial performance of the property, projected financial performance of the property for any party's intended use or any and all other matters.

Neither Landmark Commercial its directors, officers, agents, advisors, or affiliates makes any representation or warranty, express or implied, as to accuracy or completeness of the any materials or information provided, derived, or received. materials and information from any source, whether written or verbal, that may be furnished for review are not a substitute for a party's active conduct of its own due diligence to determine these and other matters of significance to such party. Landmark Commercial will not investigate or verify any such matters or conduct due diligence for a party unless otherwise agreed in writing.

**EACH PARTY SHALL CONDUCT ITS OWN INDEPENDENT INVESTIGATION AND DUE DILIGENCE.**

Any party contemplating or under contract or in escrow for a transaction is urged to verify all information and to conduct their own inspections and investigations including through appropriate third party independent professionals selected by such party. All financial data should be verified by the party including by obtaining and reading applicable documents and reports and consulting appropriate independent professionals. Landmark Commercial makes no warranties and/or representations regarding the veracity, completeness, or relevance of any financial data or assumptions. Landmark Commercial does not serve as a financial advisor to any party regarding any proposed transaction. All data and assumptions regarding financial performance, including that used for financial modeling purposes, may differ from actual data or performance. Any estimates of market rents and/or projected rents that may be provided to a party do not necessarily mean that rents can be established at or increased to that level. Parties must have evaluate any applicable contractual and governmental limitations as well as market conditions, vacancy factors and other issues in order to determine rents from or for the property.

Legal questions should be discussed by the party with an attorney. Tax questions should be discussed by the party with a certified public accountant or tax attorney. Title questions should be discussed by the party with a title officer or attorney. Questions regarding the condition of the property and whether the property complies with applicable governmental requirements should be discussed by the party with appropriate engineers, architects, contractors, other consultants and governmental agencies. All properties and services are marketed by Landmark Commercial in compliance with all applicable fair housing and equal opportunity laws.