



9970

BEVERLY HILLS

9970 SOUTH SANTA MONICA BOULEVARD
BEVERLY HILLS | CALIFORNIA

[VIEW ON MAP >](#)

VIEW ON MAP →

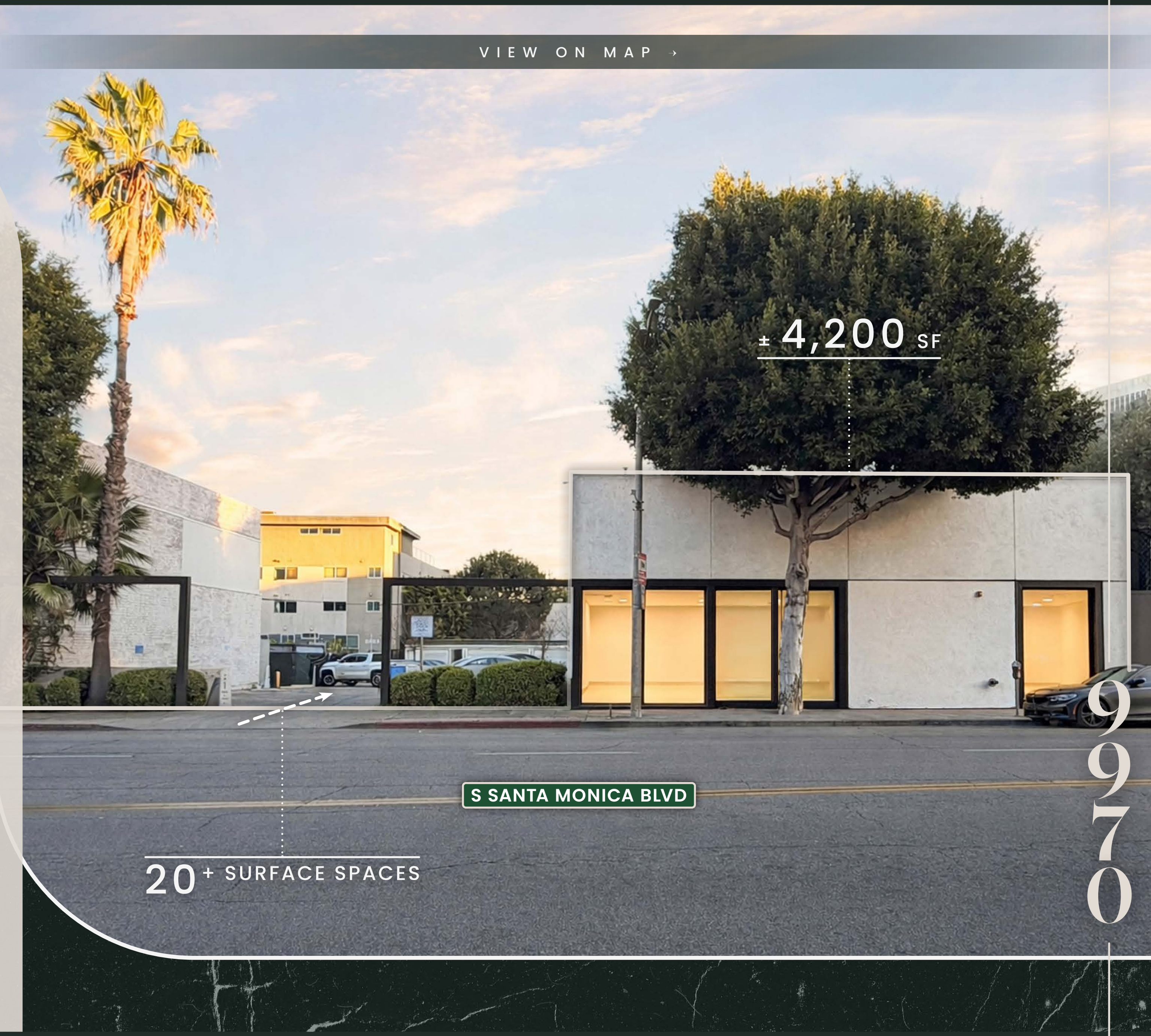
9970 SOUTH SANTA MONICA BOULEVARD
BEVERLY HILLS | CALIFORNIA

The iconic and glamorous **9970 S Santa Monica Boulevard** building in Beverly Hills, home for many years to Maison Margiela and more recently Jil Sander – *two iconic brands in their own right* – is ready to receive its next tenant custodian.

This particular pocket of Beverly Hills is its own microclimate, perfectly located just outside of the Golden Triangle, adjacent to the strongest office market in the entire country - Century City - as well being located across the street from the most highly anticipated development in the history of the City, One Beverly Hills.

A ± 4,200 square foot, freestanding, bow & truss masonry building with a dedicated and private 20+ stall parking lot is quite simply a unicorn within Beverly Hills.

Look no further for your brand's Beverly Hills flagship showroom, gallery, or headquarters.



± 4,200 SF

S SANTA MONICA BLVD

20+ SURFACE SPACES

9970

GORGEOUS
Interior Buildout

FEATURING:
VOLUMINOUS BOW & TRUSS ARCHITECTURE
& A CHARMING ORIGINAL MASONRY
BUILDING ENVELOPE

POTENTIAL FOR
Flagship Space

BEST SUITED FOR:
SHOWROOM, GALLERY, HEADQUARTERS, ETC.

UNIQUE
Dedicated & Private
PARKING LOT

± 4,200 SF

20+ SURFACE SPACES

ONE OF BEVERLY HILLS'
Iconic & Glamorous
BUILDINGS

S SANTA MONICA BLVD

CENTURY CITY

9270

SCHOOL



BEVERLY HILLS
HIGH SCHOOL

1,178 STUDENTS

Westfield
CENTURY CITY



ONE BEVERLY HILLS
MASTER DEVELOPMENT
17.5 AC Mixed-Use Development
[VIEW PROJECT >](#)

ĀMAN
Future Aman Beverly Hills
[VIEW THE AMAN WEBSITE >](#)



W
WALDORF ASTORIA
BEVERLY HILLS

the
BEVERLY HILTON

ROSEWOOD
RESIDENCES
BEVERLY HILLS
17 LUXURY CONDOS

FORTHCOMING
PEDESTRIAN CROSSWALK
Connecting One Beverly Hills
to South Santa Monica

THE PENINSULA
BEVERLY HILLS

S SANTA MONICA BLVD

SANTA MONICA BLVD

the
BEVERLY HILTON

W
WALDORF ASTORIA
BEVERLY HILLS

alo
HEADQUARTERS

THE PENINSULA
BEVERLY HILLS

BW
BEVERLY WILSHIRE
Beverly Hills
A FOUR SEASONS HOTEL

RODEO DRIVE

Saks Fifth Avenue

Neiman Marcus

370

**FORTHCOMING
PEDESTRIAN CROSSWALK**
Connecting One Beverly Hills
to South Santa Monica

ROSEWOOD
RESIDENCES
BEVERLY HILLS
17 LUXURY CONDOS

nerano

TEN THOUSAND
A CRESCENT HEIGHTS® RESIDENCE
LUXURY RESIDENCES



ONE BEVERLY HILLS
MASTER DEVELOPMENT
17.5 AC Mixed-Use | 10 AC of Lush Open Space
Blending Beverly Hilton & Waldorf Astoria
with an addition of Aman Beverly Hills
[VIEW PROJECT →](#)

AMAN
Future Aman Beverly Hills
[VIEW THE AMAN WEBSITE →](#)

S SANTA MONICA BLVD

SANTA MONICA BLVD

S MORENO DR

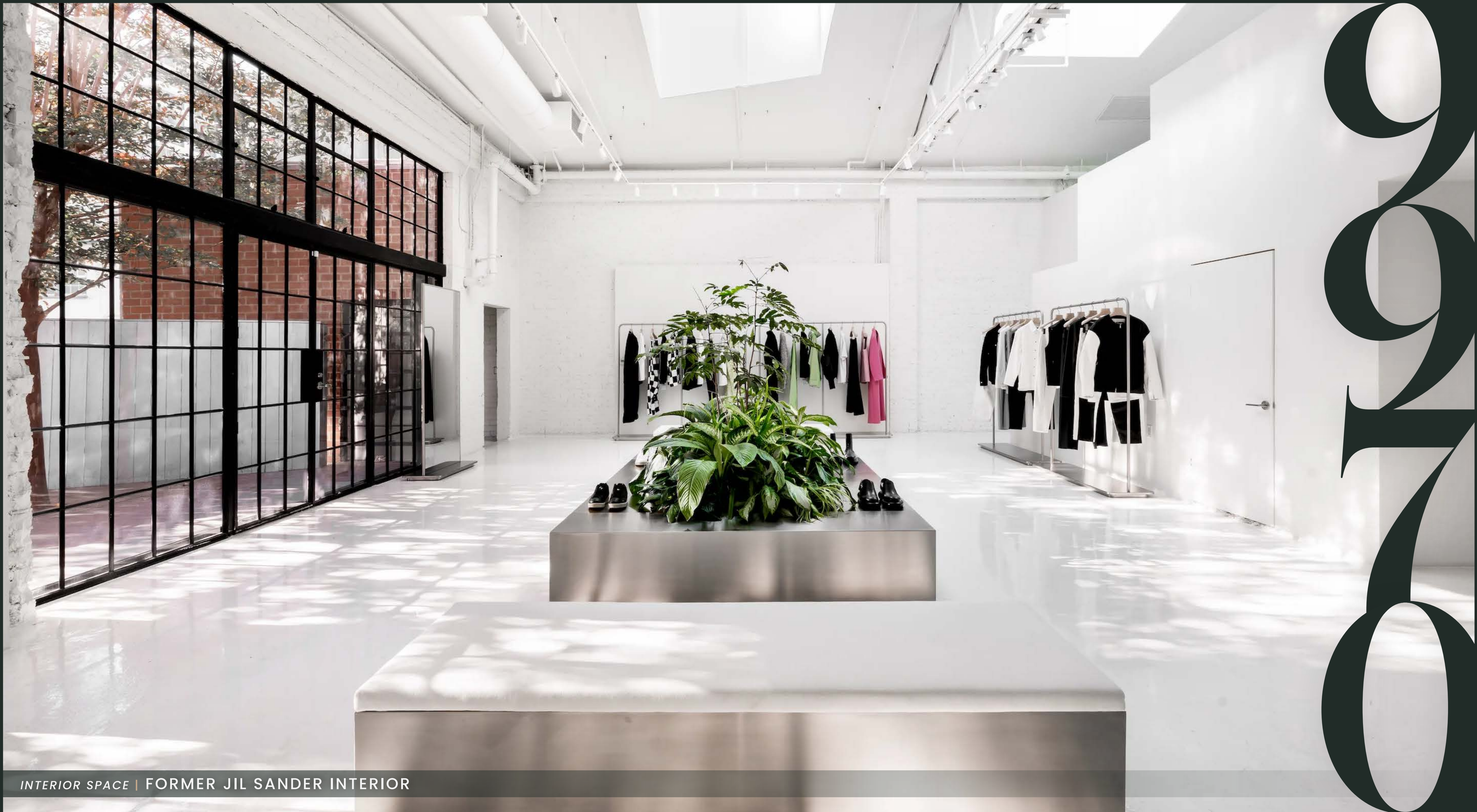
CENTURY CITY

310.556.0001 | LIVENENTHOUSAN



RENDERING

RENDERING | 9970 SANTA MONICA BLVD | BEVERLY HILLS, CALIFORNIA



02

INTERIOR SPACE | FORMER JIL SANDER INTERIOR

Site Plan



TR



ONE BEVERLY HILLS

970

**FORTHCOMING
PEDESTRIAN CROSSWALK**
Connecting One Beverly Hills
to South Santa Monica

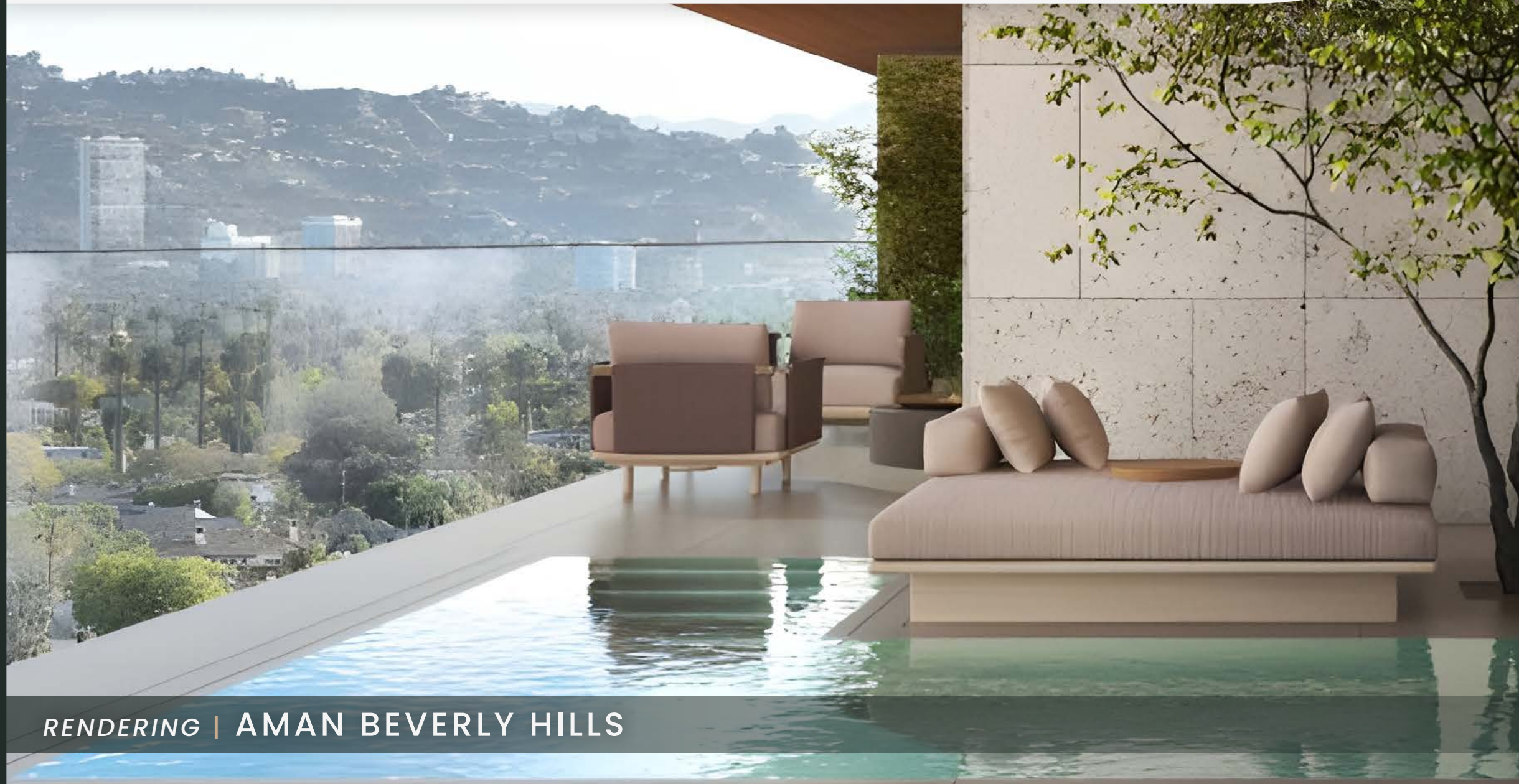


THERE'S ONLY *One Beverly Hills*

Masterplan development transforming 17.5 acres into a mixed-use destination centered around 10 acres of lush, sustainable open space designed by RIOS. The plan integrates the Beverly Hilton and Waldorf Astoria into a unified site, with upgrades to the Hilton and the addition of an Aman Hotel, branded residences, and a private members club. The project emphasizes sustainability by using harvested rainwater and recycled greywater to achieve full irrigation self-sufficiency.

[VISIT ONE BEVERLY HILLS SITE >](#) | [VISIT RIOS SITE >](#)

RENDERING | VIEW FROM WILSHIRE



RENDERING | AMAN BEVERLY HILLS



RENDERING | RETAIL AT ONE BEVERLY HILLS

An architectural rendering of the Rosewood Residences building at dusk. The building is a modern, multi-story structure with a light-colored facade and large windows. The interior lights are on, and the balconies have glass railings. A large tree is in the foreground, and the sky is a deep blue. The building is set against a backdrop of a hillside with greenery.

RW

Rosewood Residences
PRIVATE RESIDENCES IN THE HEART OF
Beverly Hills

Intimate collection of residences sets a new standard for luxury in Southern California. With architecture and design by the internationally renowned Thomas Juul-Hansen, this boutique collection consists of just 17 homes. Ranging from 3,000 to over 7,000 square feet, each residence features bespoke interiors with exquisite finishes, including private elevator access, panoramic views of the city, and generous proportions.

[VISIT THE ROSEWOOD HOTELS SITE →](#)

CITY OF
Beverly Hills
SIGNIFICANT LUXURY DEVELOPMENT

Recent changes to the zoning code for the South Santa Monica Boulevard corridor, west of Wilshire Boulevard, are anticipated to bring significant luxury multi-story development to the immediate area surrounding the subject property, similar to the Rosewood Residences.

[VIEW THE BEVERLY HILLS MIXED USE OVERLAY ZONE GUIDE →](#)

RENDERING | ROSEWOOD RESIDENCES



Santa Monica Bl

BEVERLY HILLS

Moreno Dr
200 S

2970

BEGIN
BIKE ROUTE
Santa Monica Blvd
Beverly

Beverly Hills

Internationally recognized for its luxury lifestyle, premier shopping, and high-profile residents, Beverly Hills is one of the most iconic and affluent communities in Los Angeles. With a population of approximately 30,000 and some of the highest household incomes in Southern California, the city attracts a sophisticated, high-spending consumer base that includes local residents, business professionals, and global visitors. Its central Westside location places it in close proximity to West Hollywood, Century City, and Holmby Hills, creating strong connectivity to both dense employment centers and some of the wealthiest neighborhoods in the region.

The area is anchored by the world-renowned Golden Triangle, including Rodeo Drive, Wilshire Boulevard, and Santa Monica Boulevard, which collectively form one of the most prestigious retail districts in the country. This corridor is home to flagship stores for leading luxury brands such as Chanel, Louis Vuitton, Gucci, and Cartier, along with high-end dining concepts and boutique retailers. The surrounding streets feature a curated mix of fashion, beauty, wellness, and lifestyle tenants that cater to both everyday luxury consumers and destination shoppers, driving consistent foot traffic throughout the week.



9
9
7
0

B
E
V
E
R
L
Y
H
I
L
L
S

Contact Leasing
(424) 363-7800

Andrew Cohen

EXECUTIVE VICE PRESIDENT | LEASING

acohen@pegasusam.com
LIC # 01996379 (CA)

Emmet Pierson

SENIOR ASSOCIATE | LEASING

epierson@pegasusam.com
LIC # 02048600 (CA)

Josh Dembo

ASSOCIATE | LEASING

jdembo@pegasusam.com
LIC # 02242456 (CA)

Daniel Woznica

ASSOCIATE | LEASING

dwoznica@pegasusam.com
LIC # 02211034 (CA)



PEGASUS ASSET MANAGEMENT INC.

1901 Avenue of the Stars, Suite 630, Los Angeles, CA 90067
(310) 691-1350 / www.pegasusam.com
LIC # 02119442 (CA)

The information contained in this Leasing Package is proprietary and strictly confidential. It is intended to be reviewed only by the party receiving it from Pegasus Asset Management and should not be made available to any other person or entity without the written consent of Pegasus Asset Management. This Leasing Package has been prepared to provide summary, unverified information to prospective purchasers, and to establish only a preliminary level of interest in the subject property.

The information contained herein is not a substitute for a thorough due diligence investigation. Pegasus Asset Management has not made any investigation, and makes no warranty or representation, with respect to the income or expenses for the subject property, the future projected financial performance of the property, the size and square footage of the property and improvements, the presence or absence of contaminating substances, PCB's or asbestos, the compliance with State and Federal regulations, the physical condition of the improvements thereon, or the financial condition of the business prospects of any tenants, or any tenant's plans or intentions to continue its occupancy of the subject property.

The information contained in this Leasing Package has been obtained from sources we believe to be reliable; however, Pegasus Asset Management has not verified, and will not verify, any of the information contained herein, nor has Pegasus Asset Management conducted any investigation regarding these matters and makes no warranty or representation whatsoever regarding the accuracy or completeness of the information provided. Some or all of the photographs contained within may have been altered from their original format. All potential buyers must take appropriate measures to verify all of the information set forth herein.