

NORTHLAKE CORPORATE PARK

8895 N Military Trail Palm Beach Gardens, FL 33410

AVAILABLE FOR LEASE



Benjamin Bruner

President

561-277-0174 x 101

ben.bruner@brunergroupcre.com

Jamen Storms

Vice President

561-277-0174 x 102

jamen.storms@brunergroupcre.com

**BRUNER
GROUP**

CORPORATE REAL ESTATE

NORTHLAKE CORPORATE PARK

8895 N Military Trail Palm Beach Gardens, FL 33410



Benjamin Bruner

President

561-277-0174 x 101

ben.bruner@brunergroupcre.com

Jamen Storms

Vice President

561-277-0174 x 102

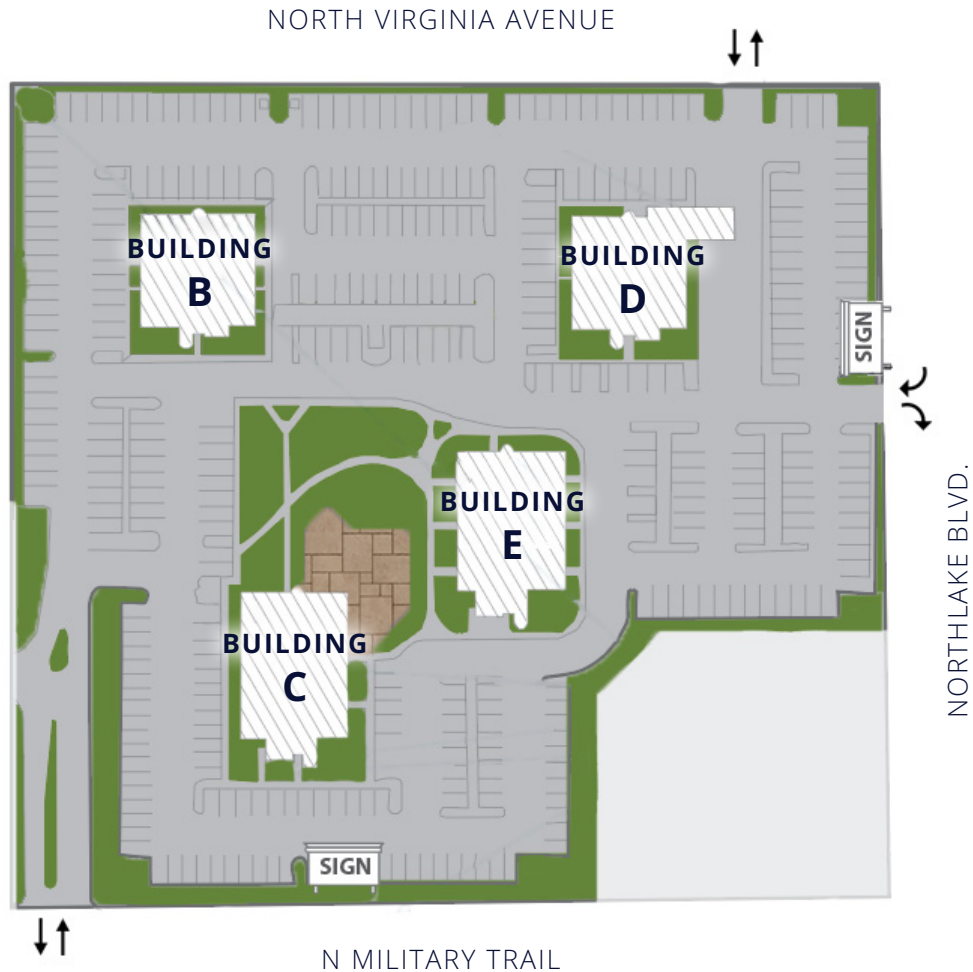
jamen.storms@brunergroupcre.com

Property Overview

- Corporate campus setting offers Tenants access to a sprawling 4,000 square feet of outdoor terrace space, perfect for breaks, lunches, etc...
- Exclusive building signage opportunities available for buildings B, C & E.
- Monument signage opportunities available on Northlake Blvd. and Military Trail.
- Abundant Parking 5:1,000 SF Parking Ratio.
- Individually metered suites with Tenant controlled air conditioning.
- Hurricane Impact Resistant Windows.
- High Speed Fiber Optic Internet available via multiple providers.
- Walking distance to multiple banks and dining establishments.
- Conveniently located immediately west of I-95 (0.6 Miles), 2.6 miles from Florida Turnpike and 3.0 miles from Bee Line Highway.
- Easily accessible- ingress/egress via Northlake Blvd., Military Trail, & Virginia Ave.
- Close proximity to West Palm Beach CBD and Palm Beach Gardens.

NORTHLAKE CORPORATE PARK

8895 N Military Trail Palm Beach Gardens, FL 33410



Business Park Specifications

Gross Leaseable Area: 75,606 SF

Land: 6.06 acres

Buildings: 4

Stories: 3

Elevators: 1 per Building

Availability:

- [204-E](#)
- [302-E](#)
- [104-D](#)

2024 Operating Expenses: \$10.17 PSF

Benjamin Bruner

President

561-277-0174 x 101

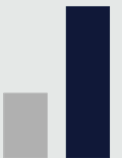
ben.bruner@brunergroupcre.com

Jamen Storms

Vice President

561-277-0174 x 102

jamen.storms@brunergroupcre.com



NORTHLAKE CORPORATE PARK

8895 N Military Trail Palm Beach Gardens, FL 33410

Interior Photos



Benjamin Bruner
President
561-277-0174 x 101
ben.bruner@brunergroupcre.com



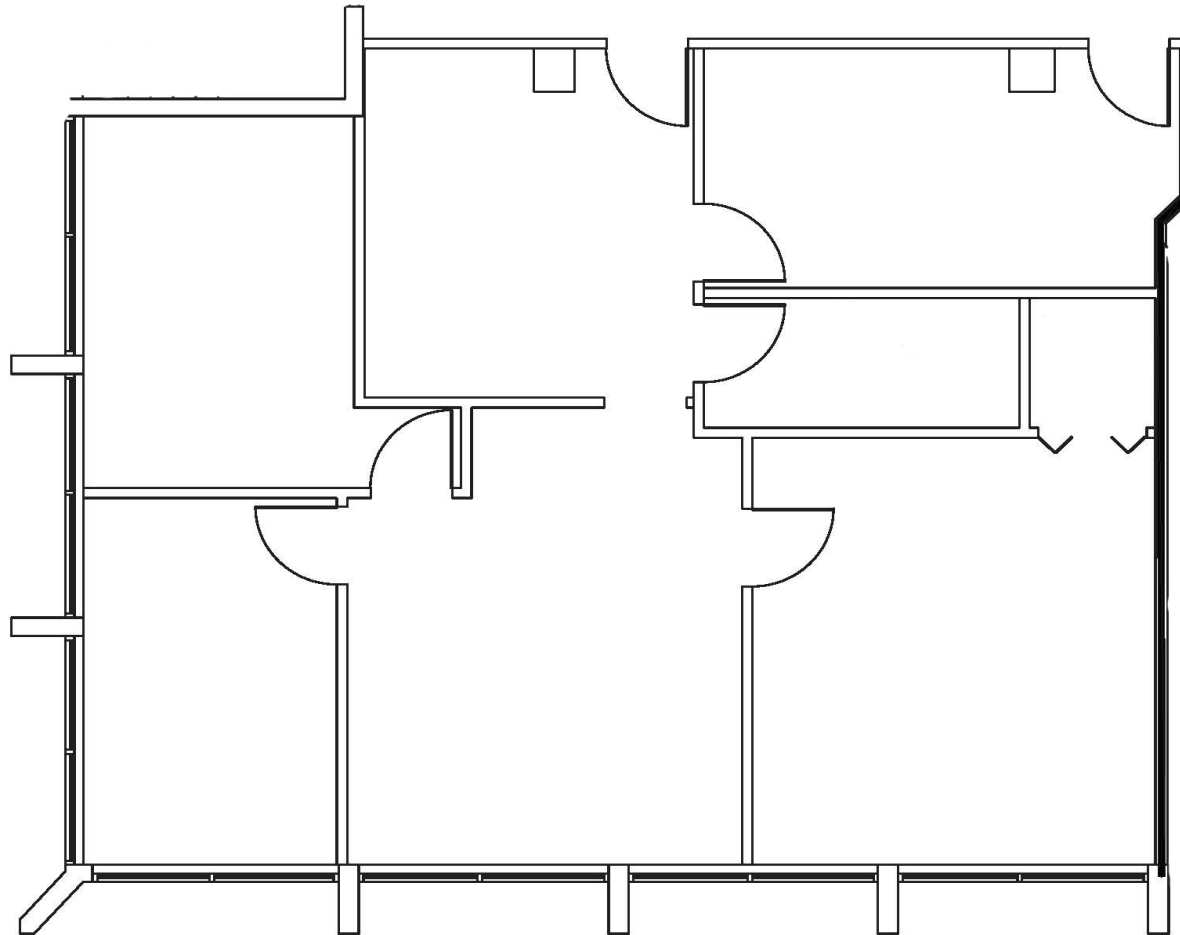
Jamen Storms
Vice President
561-277-0174 x 102
jamen.storms@brunergroupcre.com



NORTHLAKE CORPORATE PARK

8895 N Military Trail Palm Beach Gardens, FL 33410

204-E



Benjamin Bruner

President

561-277-0174 x 101

ben.bruner@brunergroupcre.com

Jamen Storms

Vice President

561-277-0174 x 102

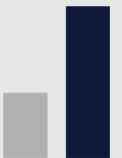
jamen.storms@brunergroupcre.com

Floor Plans for Available Units

Unit Availability

204-E

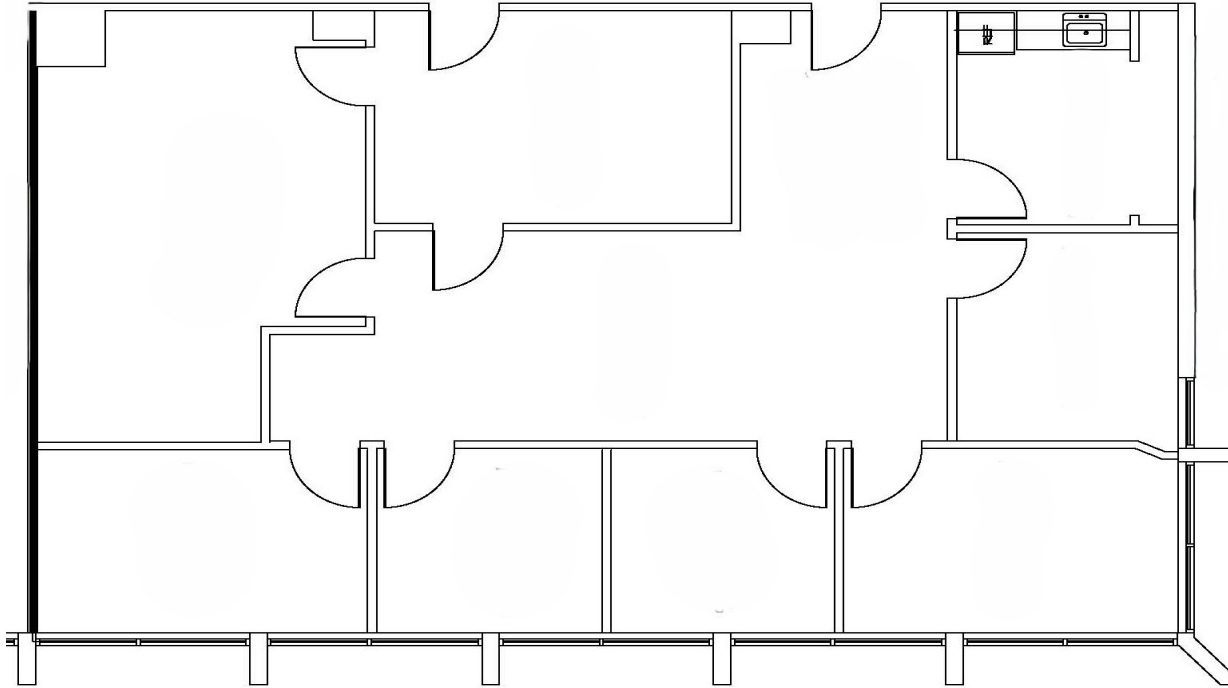
- Available Now
- 1,454 SF
- \$21.00 PSF NNN
- Reception area, 5 offices
- Fresh paint, new flooring/lighting/ceiling
- Private entry/exit to the hallway
- Corner suite offering ample natural light



NORTHLAKE CORPORATE PARK

8895 N Military Trail Palm Beach Gardens, FL 33410

302-E



Floor Plans for Available Units

Unit Availability

302-E

- Available 9/1/2024
- 1,821 SF
- \$23.00 PSF NNN
- Kitchenette, 6 offices, conference room
- Fresh paint, new flooring/lighting/ceiling

Benjamin Bruner

President

561-277-0174 x 101

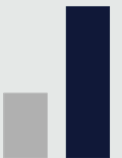
ben.bruner@brunergroupcre.com

Jamen Storms

Vice President

561-277-0174 x 102

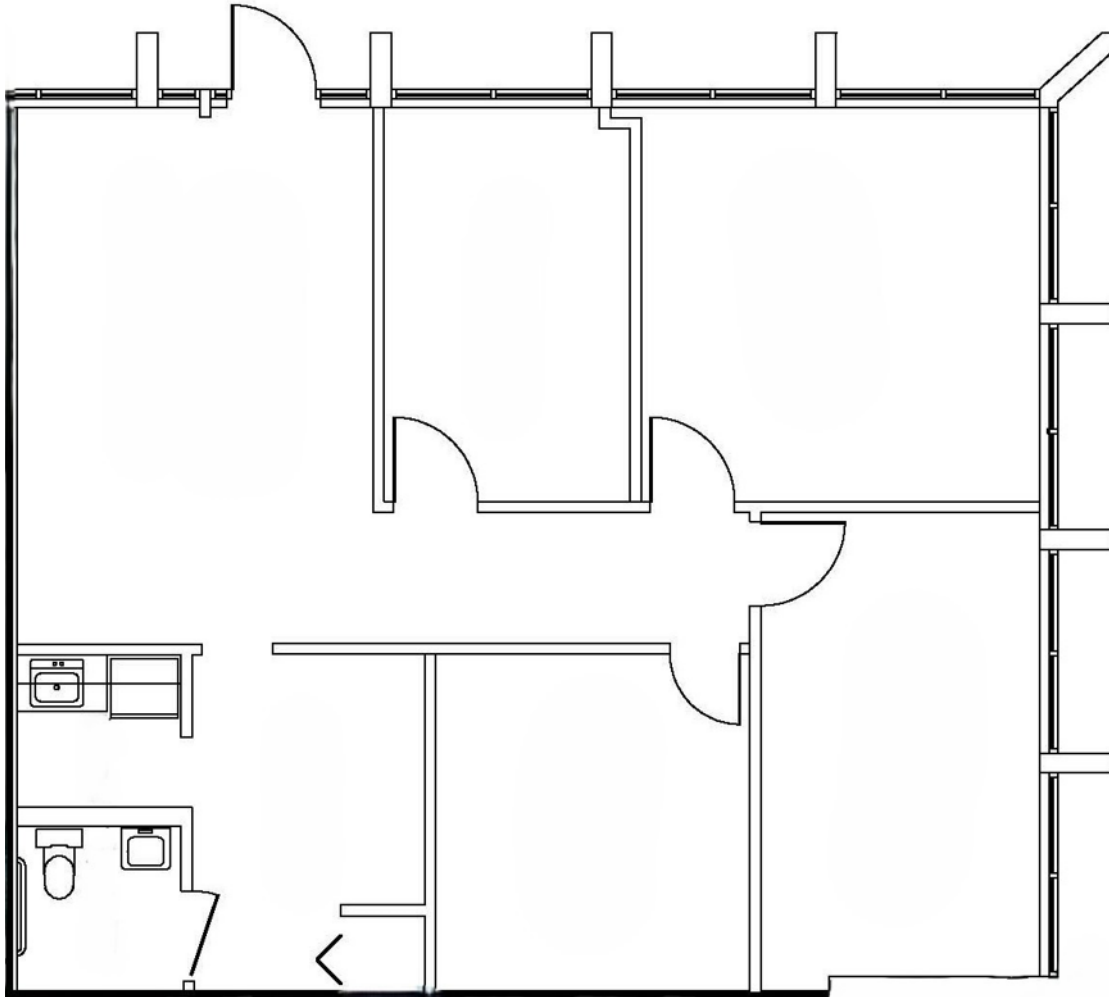
jamen.storms@brunergroupcre.com



NORTHLAKE CORPORATE PARK

8895 N Military Trail Palm Beach Gardens, FL 33410

104-D



Benjamin Bruner

President

561-277-0174 x 101

ben.bruner@brunergroupcre.com

Jamen Storms

Vice President

561-277-0174 x 102

jamen.storms@brunergroupcre.com

Floor Plans for Available Units

Unit Availability

104-D

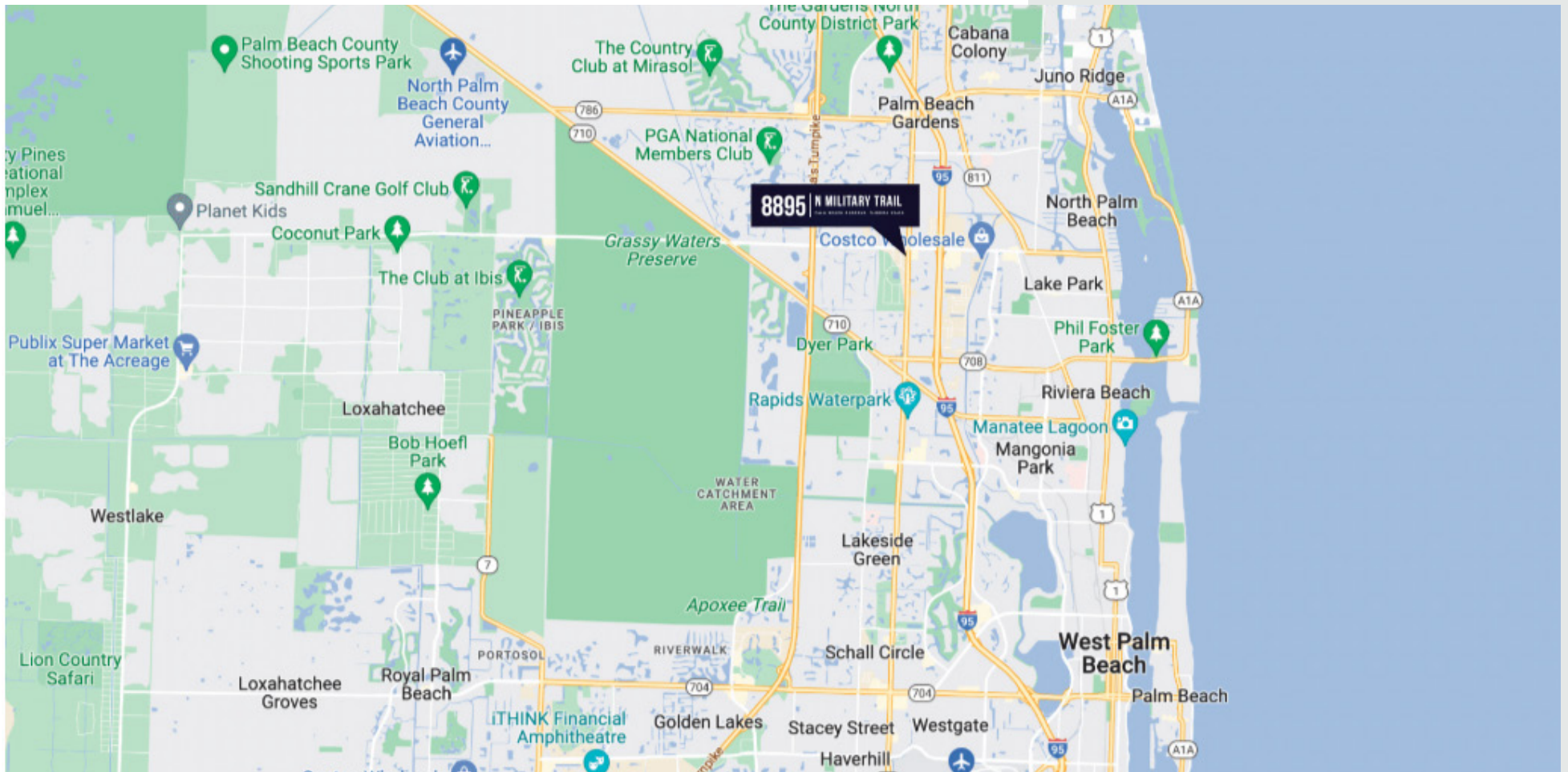
- Available 3/1/2025
- 1,367 SF
- \$25.00 PSF NNN
- Kitchenette, 4 offices, waiting room, private restroom
- Fresh paint, new flooring/lighting/ceiling
- First-floor corner suite with abundant natural light
- Direct entry/exit



NORTHLAKE CORPORATE PARK

8895 N Military Trail Palm Beach Gardens, FL 33410

Map View



Benjamin Bruner

President

561-277-0174 x 101

ben.bruner@brunergroupcre.com

Jamen Storms

Vice President

561-277-0174 x 102

jamen.storms@brunergroupcre.com