



CAPE CORAL, FL

724 SW PINE ISLAND RD

0.72 ACRES AVAILABLE FOR LEASE



PROJECT DETAILS

724 SW PINE ISLAND RD • 0.72 ACRES AVAILABLE FOR LEASE

PROPERTY HIGHLIGHTS

- 0.72 Acres fronting Pine Island Rd
- Direct access to Pine Island Rd. (41,000 ADT)
- Dedicated monument signage available
- Site can accommodate 2,500 SF building with Drive thru
- Ideal for drive thru restaurant, automotive or retail uses

COUNTY

Lee County

DEMOGRAPHICS



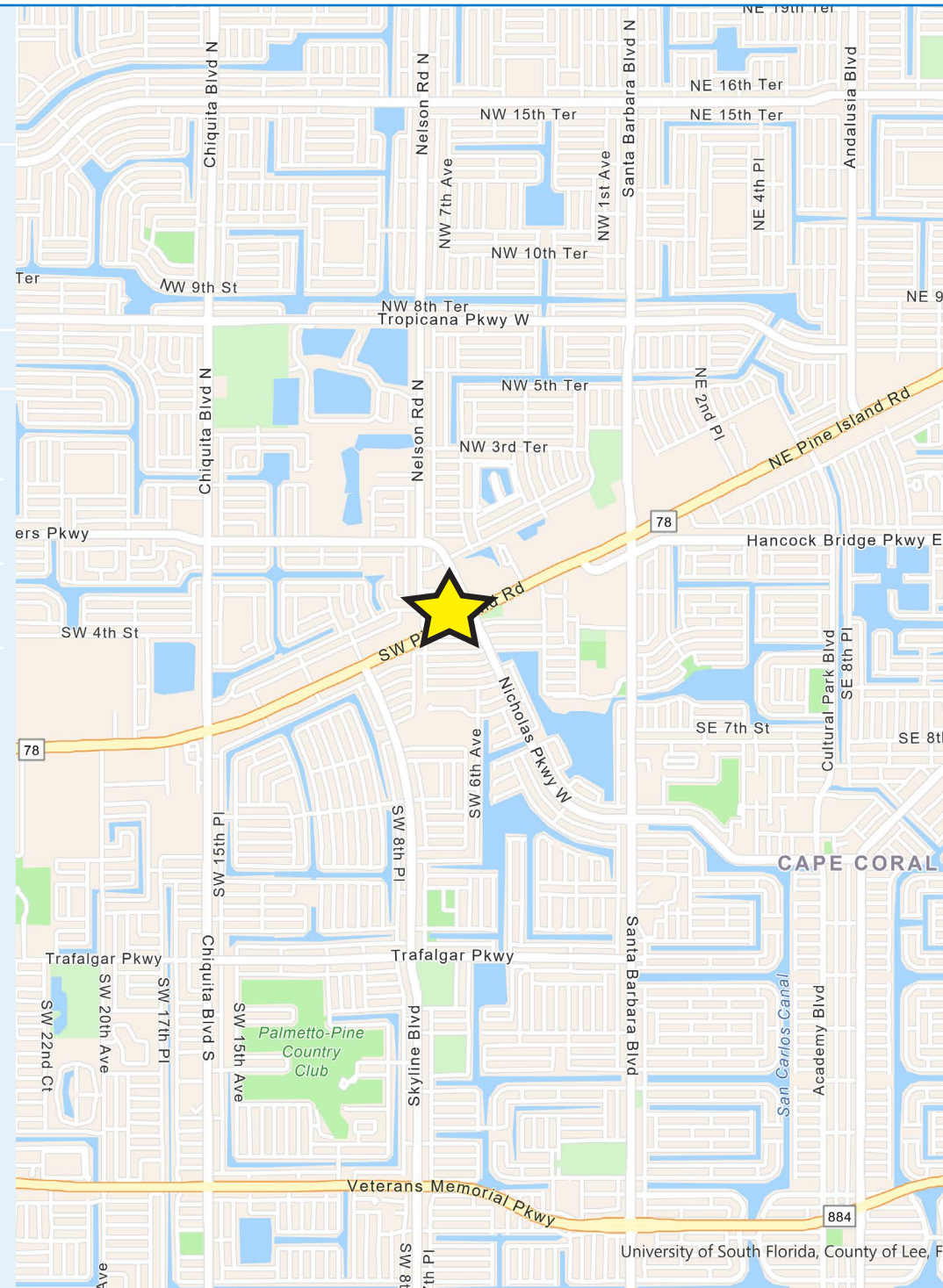
POPULATION

1 MILE	3 MILE	5 MILE	7 MILE
5,139	65,741	159,100	222,427



MEDIAN HH INCOME

\$79,520	\$73,357	\$73,474	\$70,364
----------	----------	----------	----------



AERIAL

Chiquita Pkwy 13,200 ADT



Mister

PROPOSED SELF STORAGE



UNDER CONTRACT



Pine Island Rd

Skyline Blvd



SITE



QDOBA

41,000 ADT



Publix

ME MedExpress

xfinity

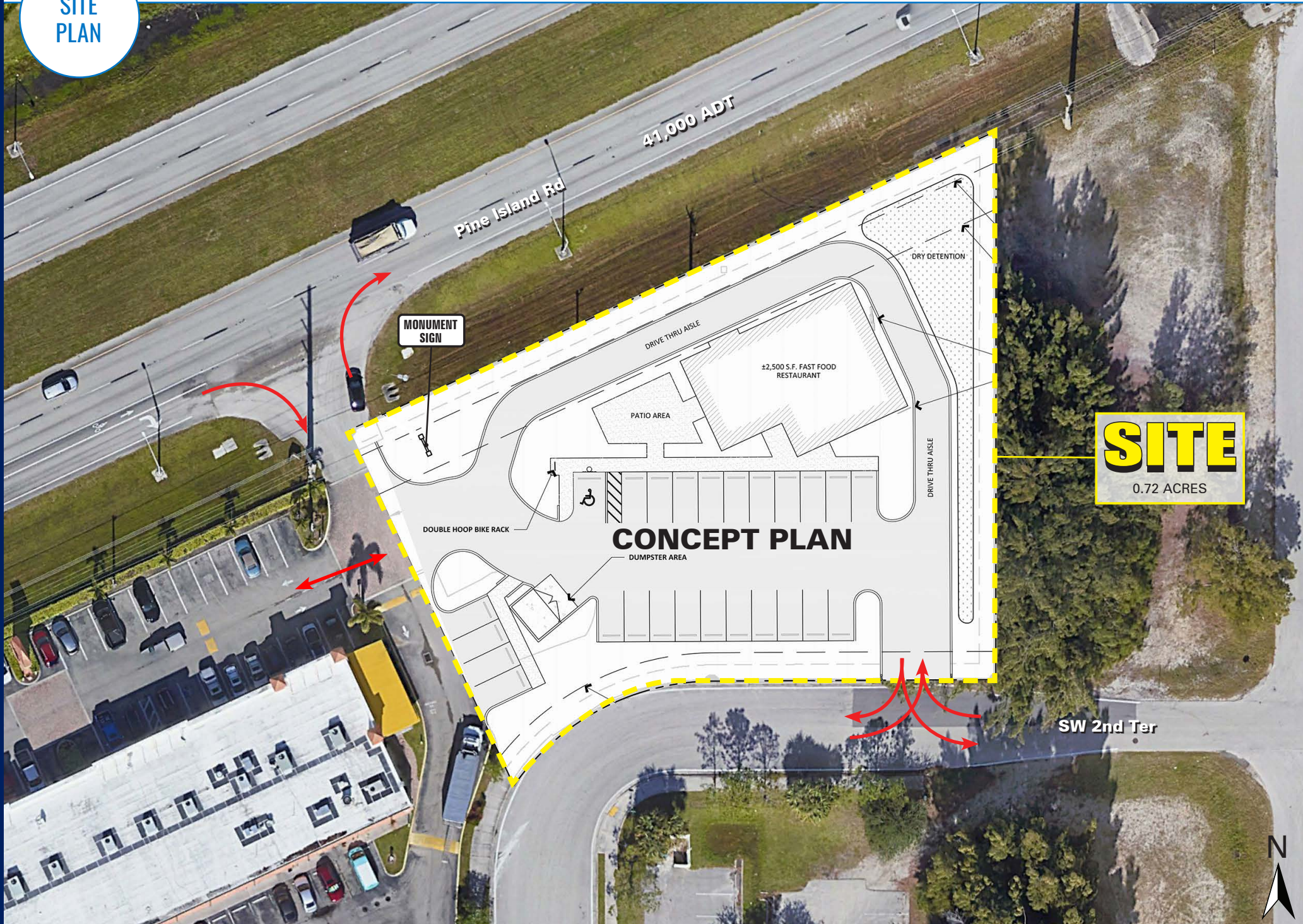


Nicholas Pkwy 12,500 ADT

22,000 ADT

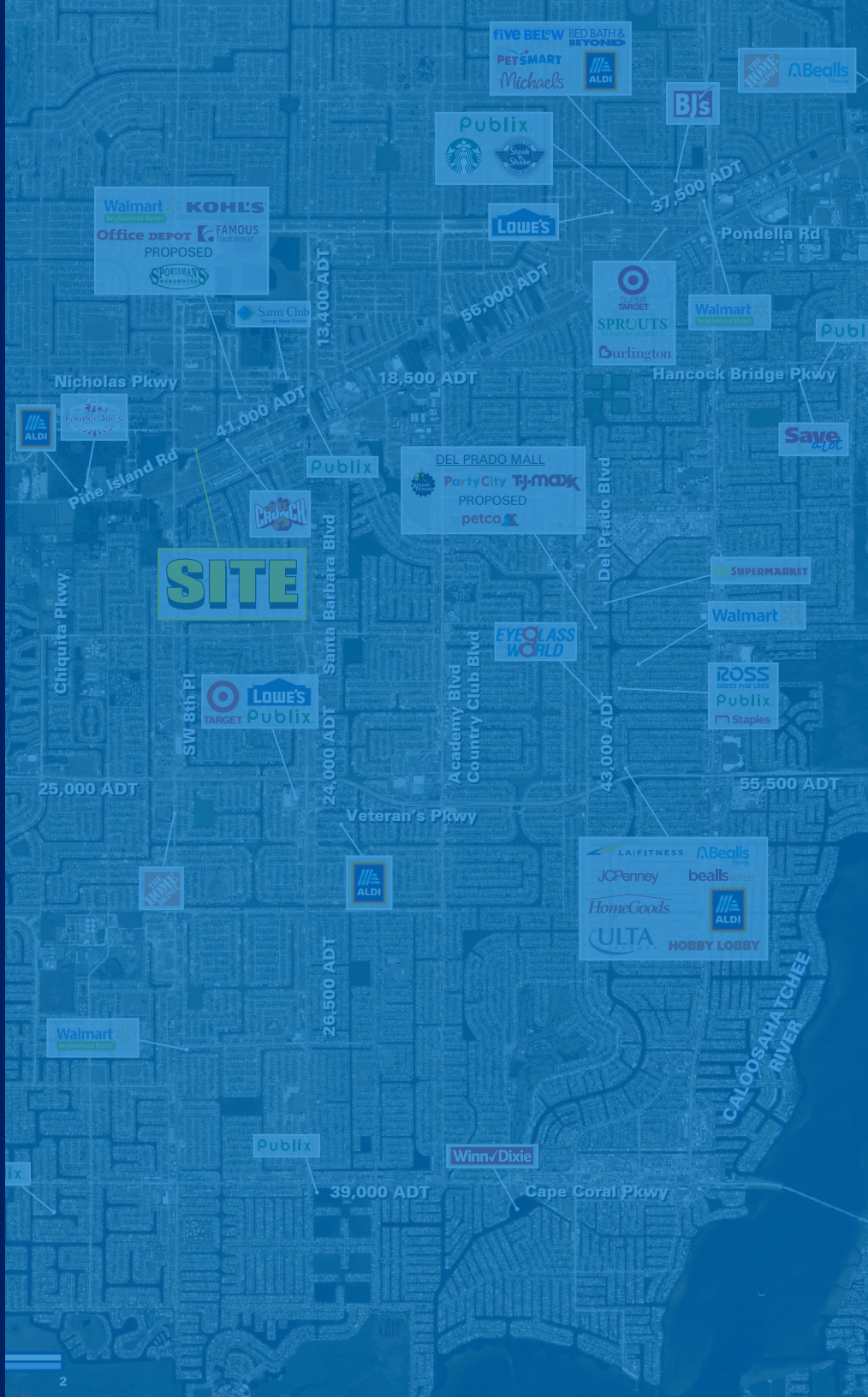


SITE PLAN



SITE
0.72 ACRES





CAPE CORAL, FL

724 SW PINE ISLAND RD

0.72 ACRES AVAILABLE FOR LEASE

MATT LYNCH

561.424.3019
 MLYNCH@ATLANTICRETAIL.COM



ALBANY
 ATLANTA
 BOSTON
 CHARLOTTE
 LOS ANGELES
 NEW YORK CITY
 ORLANDO
 PITTSBURGH
 WEST PALM BEACH

HOLTEC BUILDING
 1001 N US HWY ONE, SUITE 600
 JUPITER, FL 33477
 561.427.6699

WWW.ATLANTICRETAIL.COM

[LINKEDIN.COM/COMPANY/ATLANTIC-RETAIL-PROPERTIES](https://www.linkedin.com/company/atlantic-retail-properties)
[INSTAGRAM.COM/ATLANTIC_RETAIL/](https://www.instagram.com/atlantic_retail/)

