

FOR LEASE

9900 18th St N

St. Petersburg, FL 33716



For more information please contact:

JOHN JACKSON, SIOR, CCIM

Executive Director

+1 727 643 7316

john.jackson@cushwake.com

JT FAIRCLOTH

Director

+1 813 833 3242

jt.faircloth@cushwake.com

CASEY PERRY

Senior Associate

+1 813 233 6564

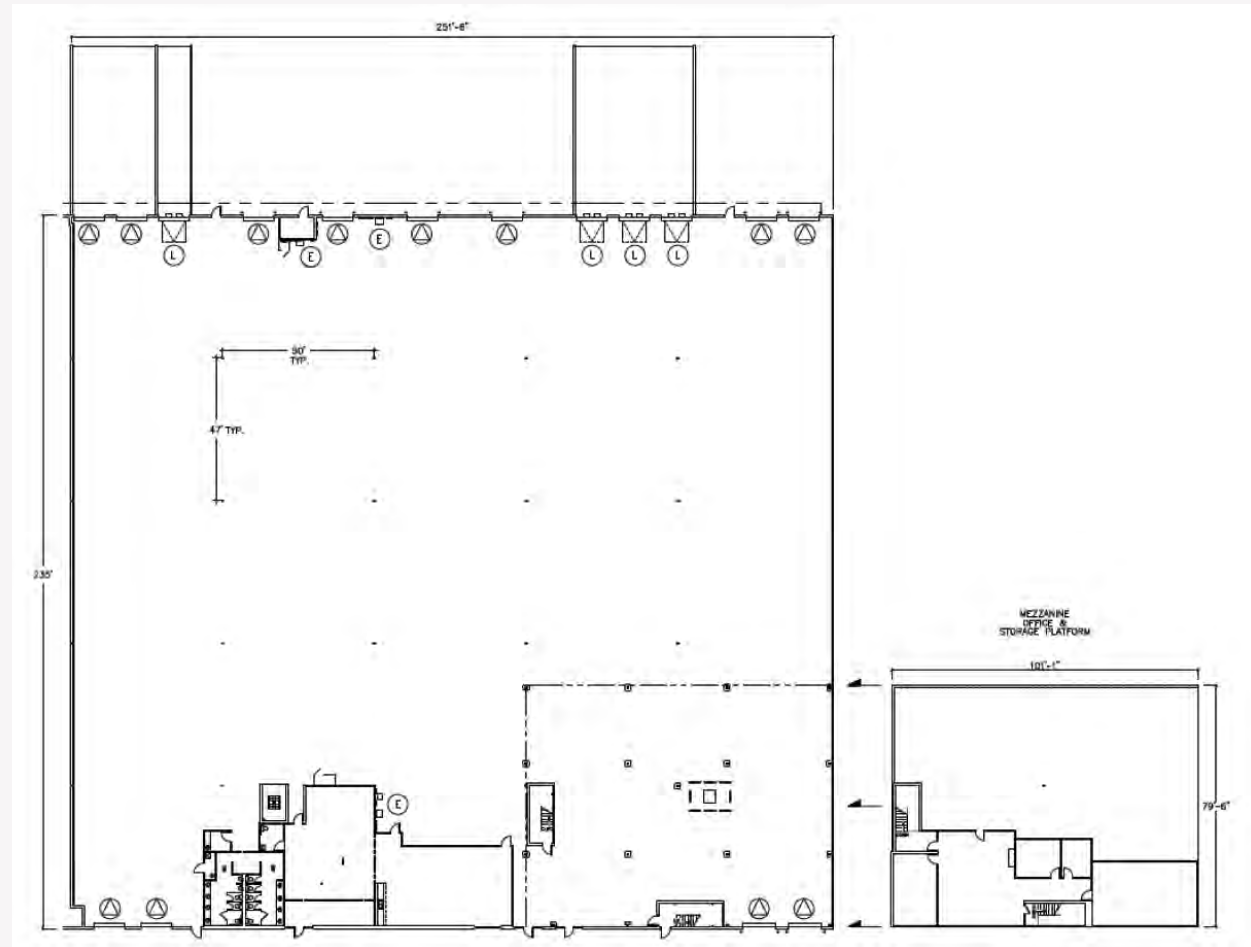
casey.g.perry@cushwake.com



GID
INDUSTRIAL

PROPERTY FEATURES + FLOOR PLAN

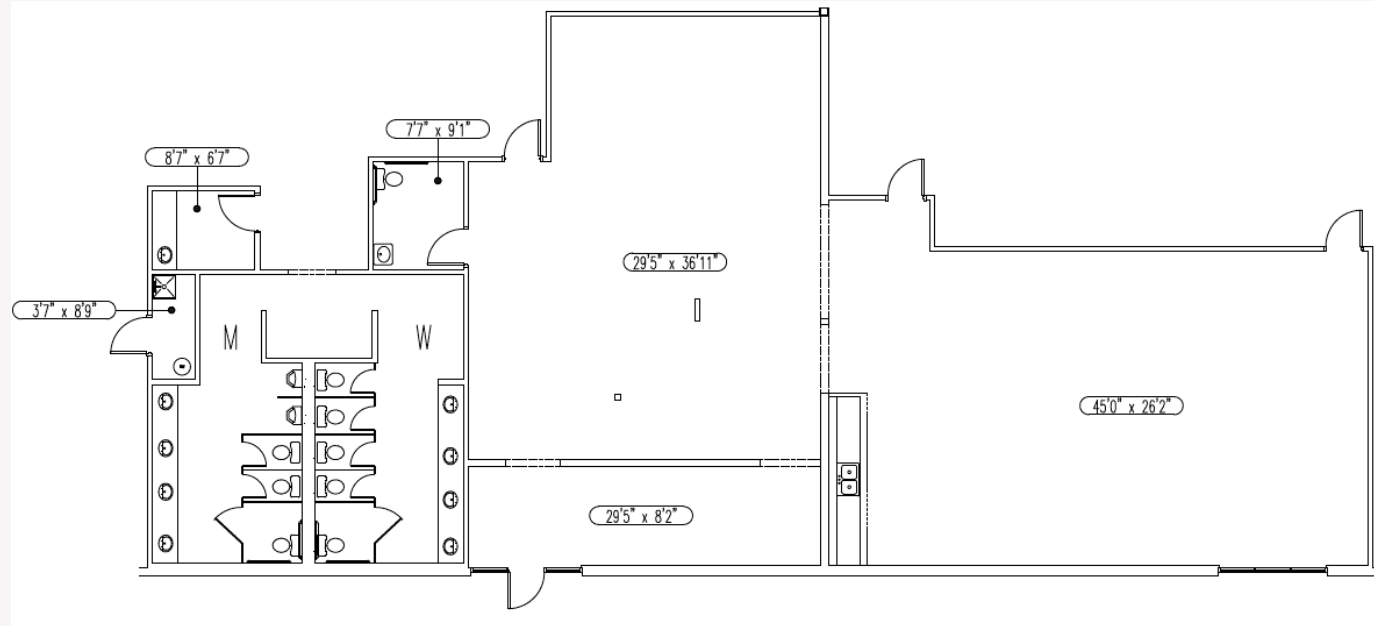
- 59,060 SF
- 3,364 SF First Floor Office
- 2,477 SF Second Floor Office
- 5,078 SF Mezz Storage Space (not included in RSF)
- Clear Height: 27'
- 6 Dock Door Fans
- 12 (10' x 13') Drive-In Doors
- Parking Ratio: 2.5/1000
- 130' Truck Court Depth
- ESFR Sprinkler System
- 4 (10' x 10') Grade Level Doors
- 100% Air Conditioned Warehouse
- Construction Type: Tilt-Up Concrete
- Power: 3 Phase, 1200 AMP, 277/480 V
- 4 (10' x 10') Truck Wells W/ Pit Levelers and Seals
- 4 Front Drive-In Doors Convertible to Storefront Glass



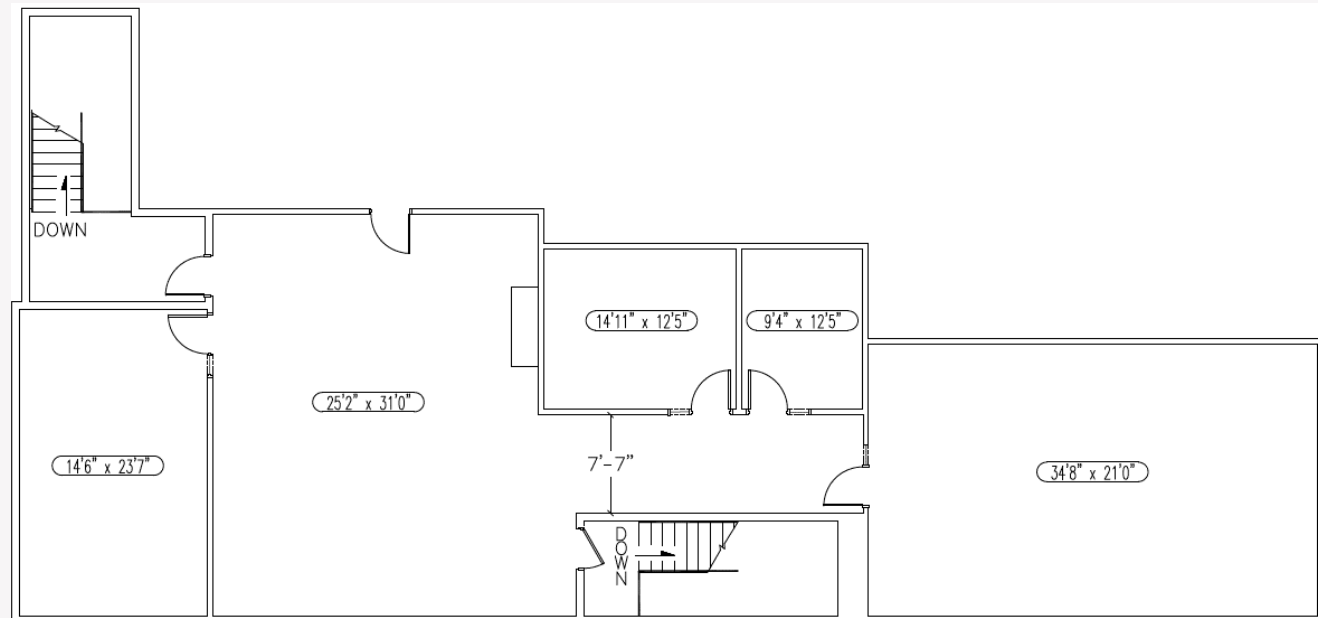
AVAILABLE NOW

MEZZ/UPSTAIRS OFFICE +DOWNSTAIRS OFFICE

Downstairs Office



Upstairs/Mezz Office

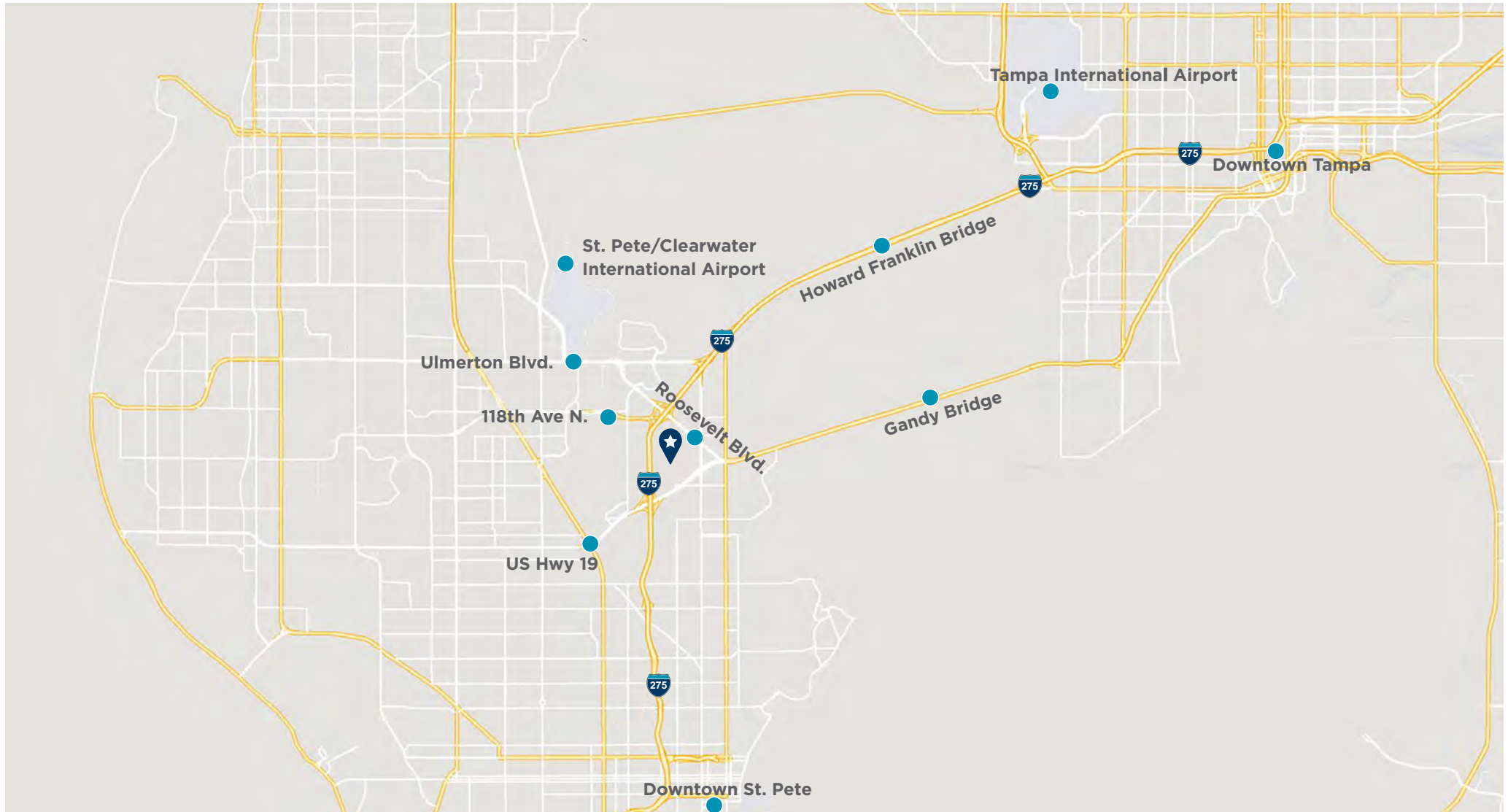


AVAILABLE NOW

SITE PLAN



AERIAL MAP



CONTACT

JOHN JACKSON, SIOR, CCIM

Executive Director

+1 727 643 7316

john.jackson@cushwake.com

JT FAIRCLOTH

Director

+1 813 833 3242

jt.faircloth@cushwake.com

CASEY PERRY

Senior Associate

+1 813 233 6564

casey.g.perry@cushwake.com

201 N. Franklin St., Suite 3300

Tampa, FL 33602

+1 813 223 6300

cushmanwakefield.com

