

160 SEVENTH AVENUE

BETWEEN 19TH & 20TH STREETS | CHELSEA

THE
SLEEPING CAT

BETWEEN 19TH & 20TH STREETS | CHELSEA

PROPERTY DETAILS

SIZE: 1,500 SF Ground Floor
1,000 SF Basement

FRONTAGE: 25'

CEILING HEIGHT: 11'

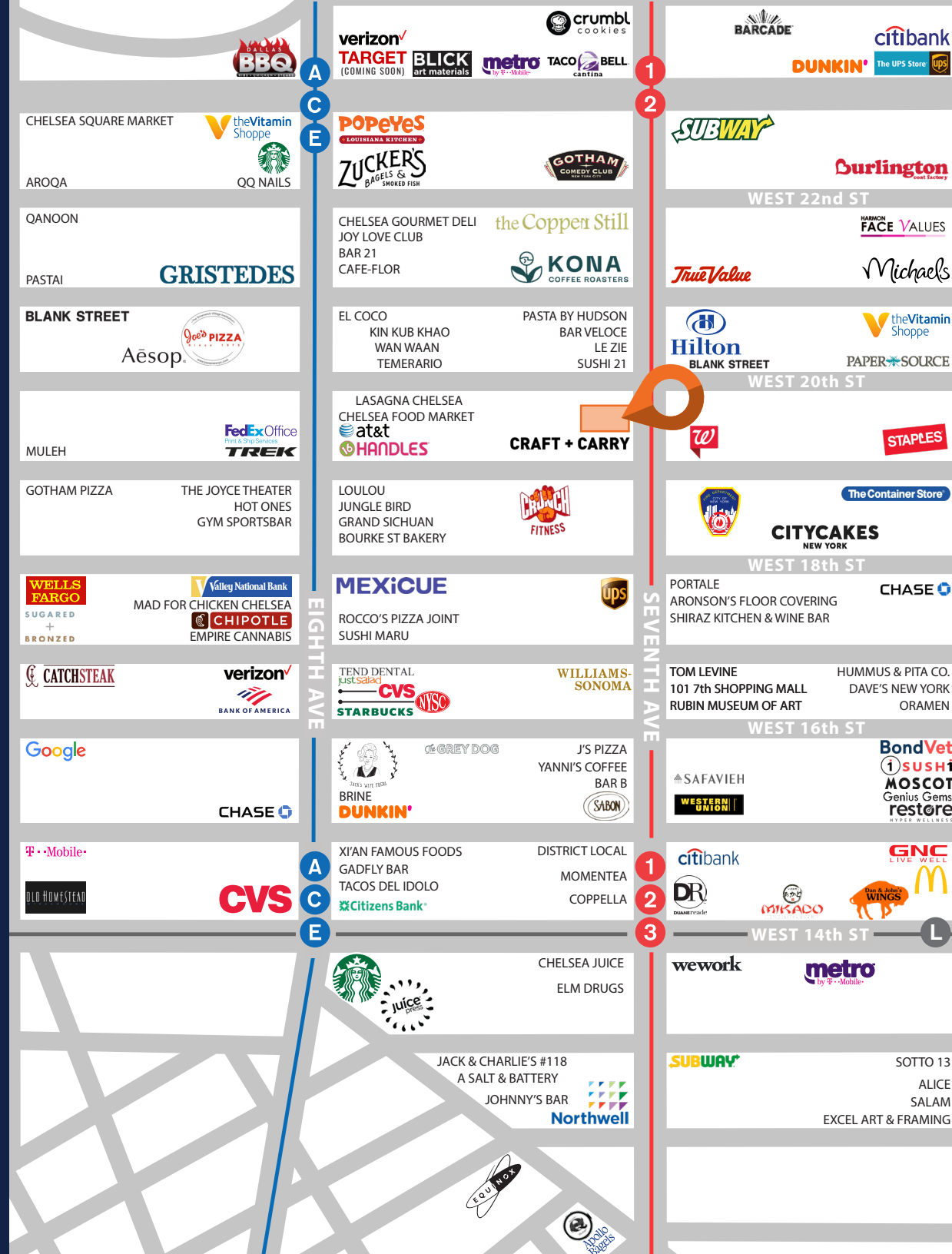
POSSESSION: Immediate

ASKING RENT: Upon Request

TRANSPORTATION: 1 2 3 A C E L

HIGHLIGHTS

- Fully built-out cafe available for lease
- Cooking exhaust in place
- Space is vented
- Two (2) bathrooms in place
- High foot traffic area
- Steps away from the train station
- Ideal for: *Cafe, Bakery, Coffee Shop, Restaurant, QSR's*
- Neighboring tenants include:
Blinds to Go, Williams-Sonoma, West Elm, The Shade Store, Westville, Cafeteria, The UPS Store, Safavieh, Mattress Firm, Housing Works, Room & Board, Calligaris, Malin+Goetz, Blank Street Coffee



160 SEVENTH AVENUE

BETWEEN 19TH & 20TH STREETS | CHELSEA

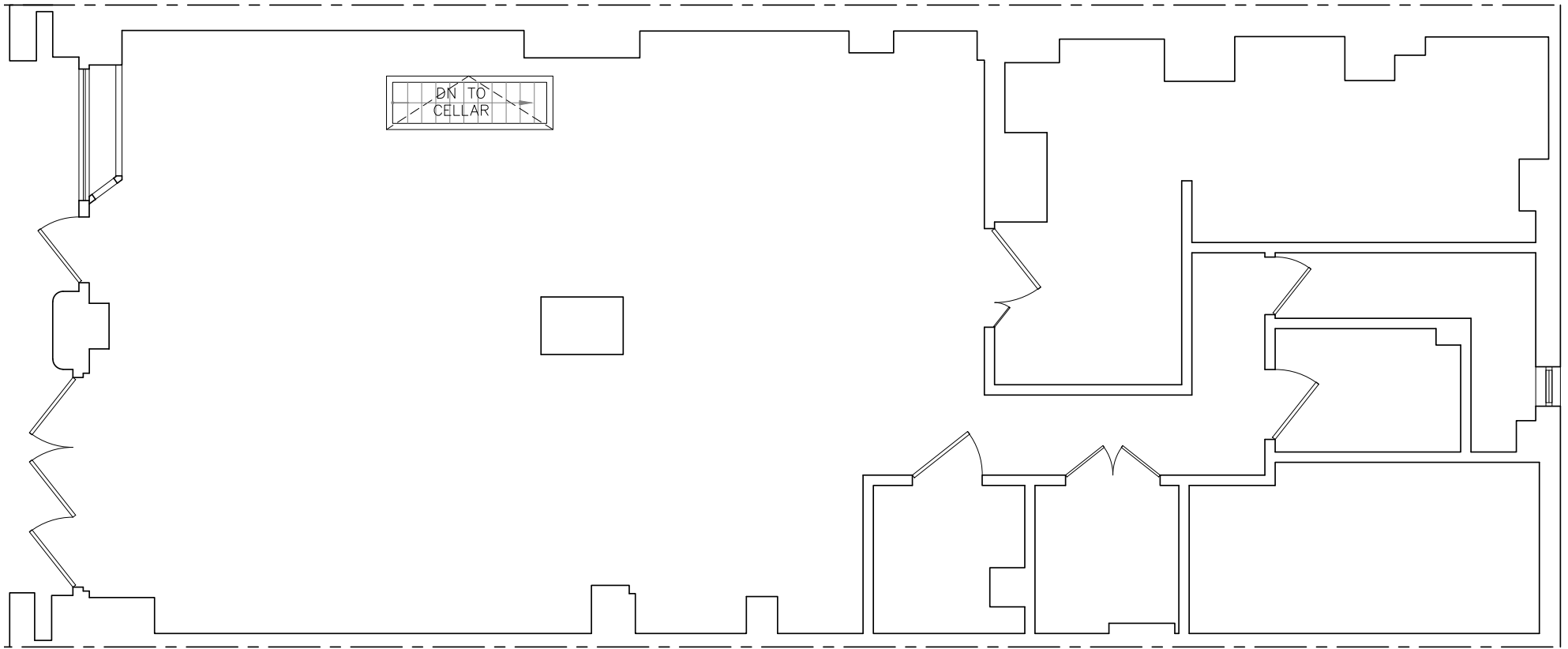
INTERIORS:



160 SEVENTH AVENUE

BETWEEN 19TH & 20TH STREETS | CHELSEA

FLOOR PLANS:
GROUND FLOOR - 1,500 SF



160 SEVENTH AVENUE

BETWEEN 19TH & 20TH STREETS | CHELSEA

FOR MORE INFORMATION,
PLEASE CONTACT:

JACKY YEDID

646.726.5122 | JYedid@ksrny.com

ALBERT MANOPLA

212.380.8369 | AManopla@ksrny.com



1385 Broadway, 22nd Floor | New York, NY 10018
212.417.9217

ksrny.com

All information supplied in this marketing presentation and/or flyer is from sources deemed reliable and is furnished subject to errors, omissions, modifications, removal of listings from sale/lease and to any listing condition. Any square footage, dimensions, floor plans and/or technical data set forth are approximations and are subject to further elaboration/confirmation.