

NWC

# LOOP 101 & RAINTREE DR

Scottsdale, AZ

**FOR LEASE:** ±1,617 SF Available, Former Barbershop





# site plan overview

PAD SIZE:	±1,617 SF
ADDRESS:	14850 N 87th St, Scottsdale, AZ 85260
ZONING:	PCP/AMU PSD
PRICING:	Call for Rates

## neighboring tenants



KOHL'S



ME Massage Envy.



YU'S  
MONOOLIAN GRILL  
healthy asian kitchen



XTENSION ENVY  
THE HAIR EXTENSION SALON

SWEETWATERS.  
COFFEE & TEA

## traffic count ADOT 2024

Loop 101

**N** ±200,227 VPD (NB & SB)  
**S** ±145,765 VPD (NB & SB)

Raintree Dr

**E** ±25,006 VPD (EB & WB)  
**W** ±31,037 VPD (EB & WB)

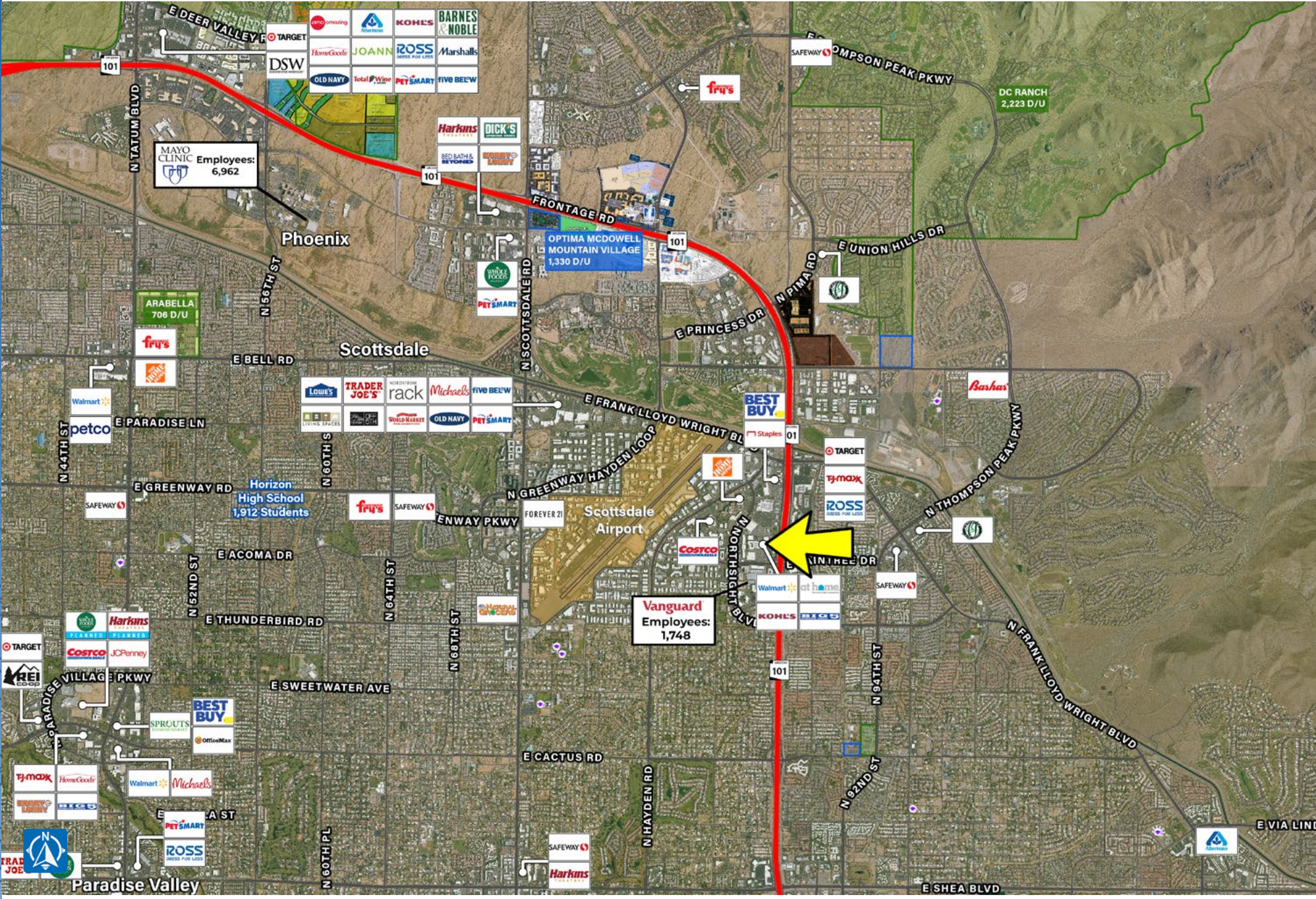








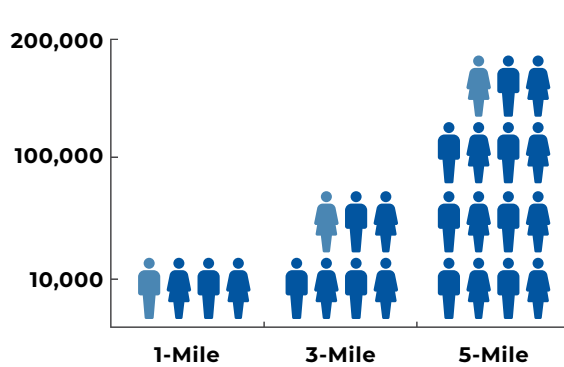
# wide aerial



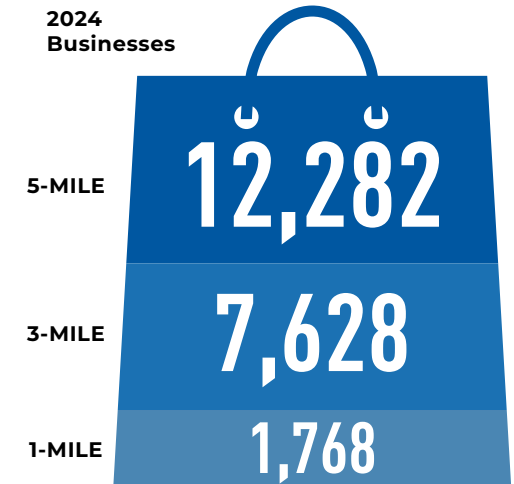
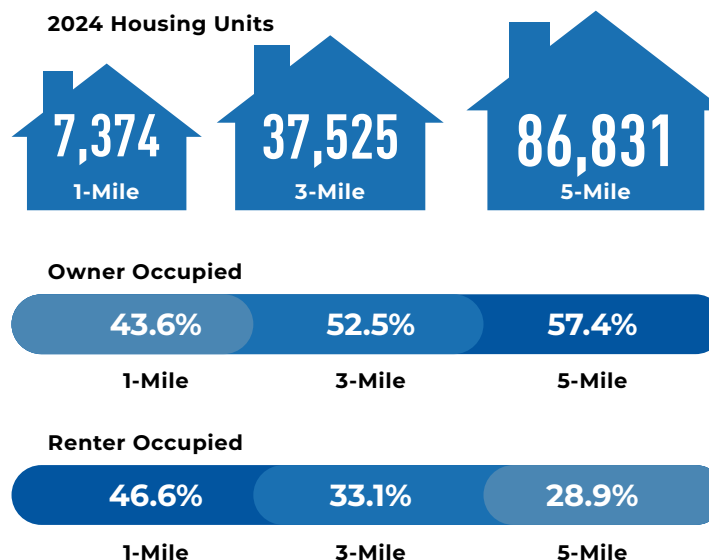
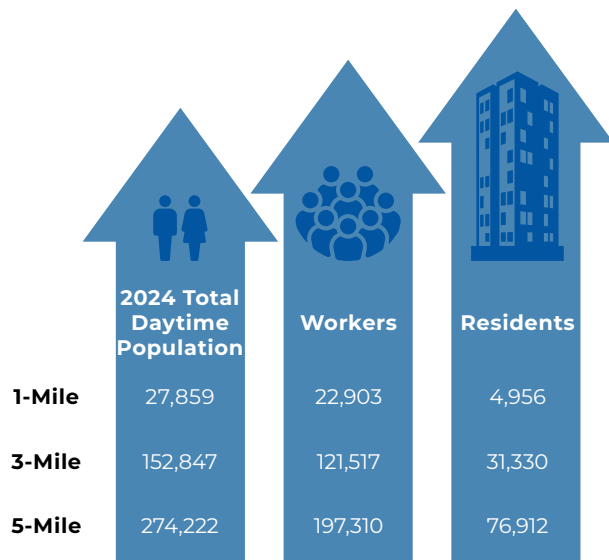
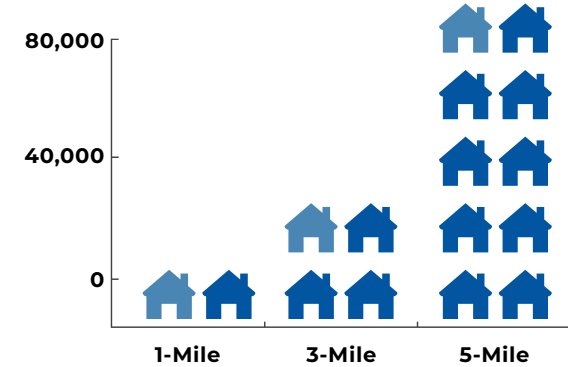


# demographics overview

ESRI 2024



	Median HH Income	Average HH Income	Per Capita Income
1-Mile	\$100,453	\$133,480	\$66,276
3-Mile	\$125,075	\$178,752	\$81,747
5-Mile	\$123,057	\$177,586	\$80,440







PHOENIX COMMERCIAL ADVISORS

A MEMBER OF CHAINLINKS RETAIL ADVISORS

exclusively listed by

**DILLON YOUNG**

(602) 288.3474

[dyoung@pcaemail.com](mailto:dyoung@pcaemail.com)

PHOENIX COMMERCIAL ADVISORS  
3131 East Camelback Road, Suite 340  
Phoenix, Arizona 85016

P. (602) 957-9800

F. (602) 957-0889

[phoenixcommercialadvisors.com](http://phoenixcommercialadvisors.com)

The information contained herein has been obtained from sources believed reliable. While we do not doubt its accuracy, we have not verified it and make no guarantee, warranty or representation about it. It is your responsibility to independently confirm its accuracy and completeness. Any projections, opinions, assumptions or estimates used are for example only, and do not represent the current or future performance of the property. The value of this transaction to you depends on tax and other factors which should be evaluated by your tax, financial and legal advisors. You and your advisors should conduct a careful, independent investigation of the property to determine to your satisfaction the suitability of the property for your needs.