

FOR LEASE

6750 Bender Rd, Humble, TX 77396

Property Size:

- Land: ±1.0 to ±11.46 acres of stabilized yard available

Property Features:

- Paved & well lit with gated access
- Functional, stabilized yard for outdoor storage
- Multiple configuration/acreage available

Improvements:

- 2,200 SF to 4,500 SF of Modular office available on-site

Bldg 1:

- +/-12,074 SF Total
- 26' Eave Height
- Two (2) 3-Ton Cranes
- 50' Crane Span
- Grade Level with Drive Through Access

Bldg 2:

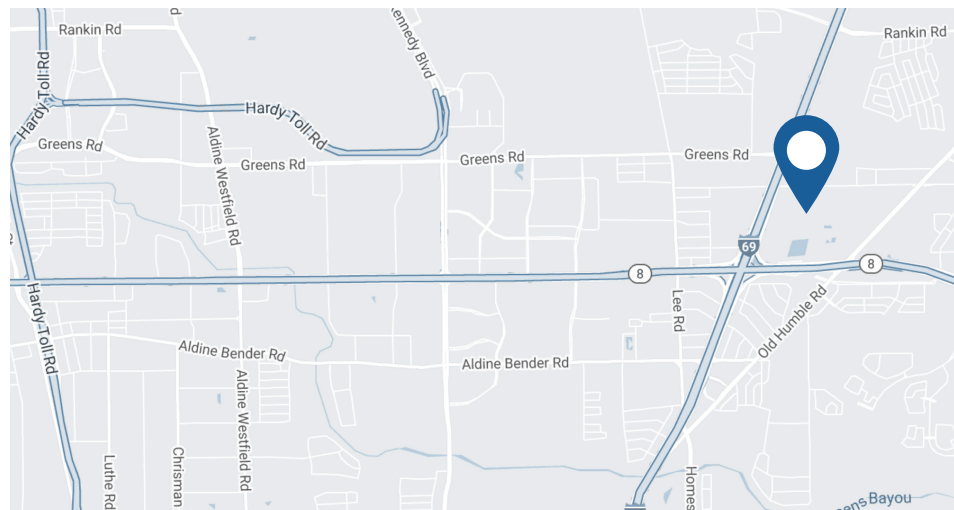
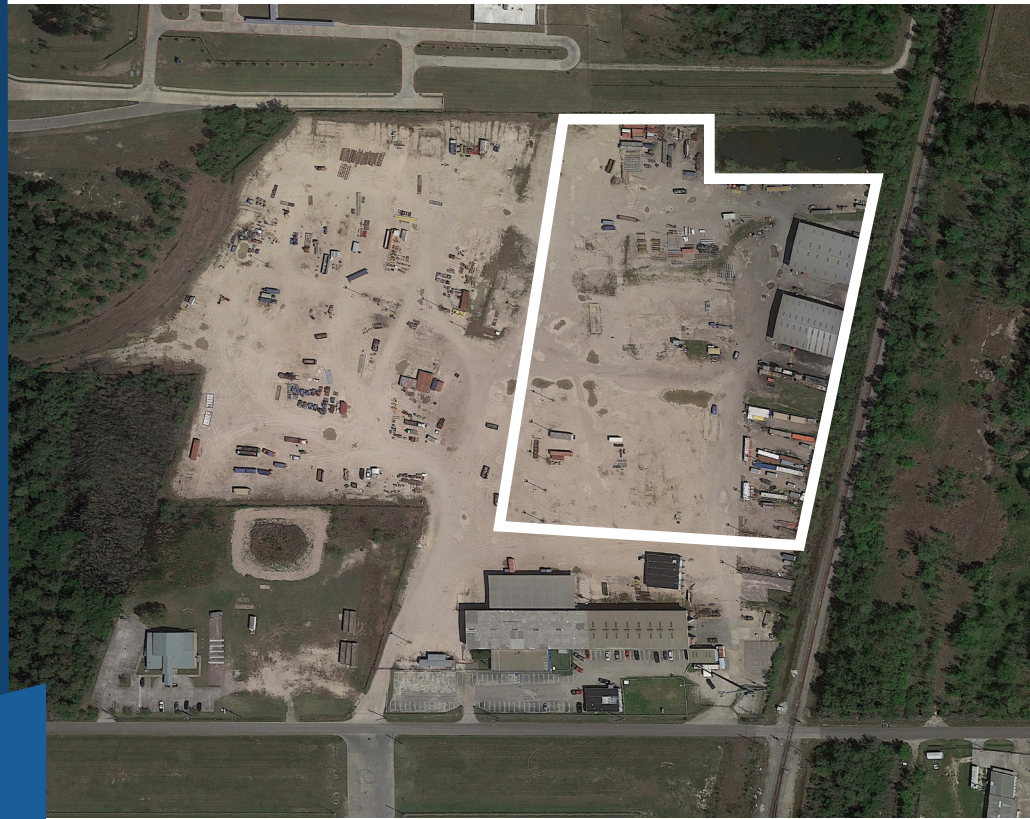
- +/-12,124 SF Total
- 26' Eave Height
- Two (2) 3-Ton Cranes
- 50' Crane Span
- Grade Level with Drive Through Access

- Quick access to I-69, Beltway 8, & FM 1960
- Multiple configurations & offerings available
- No zoning

Lease Rate:

- \$4,200/Acre/Month NNN
- OPEX: Estimated at \$350/Acre/Month

+1.0 to +11.46 acres of stabilized, outside yard available for lease



FOR LEASING INFORMATION, CONTACT:

TYLER MANER | 830.992.0834 | TMANER@STREAMREALTY.COM

WILLIAM CARPENTER | 713.204.4716 | WILLIAM.CARPENTER@STREAMREALTY.COM

TOMMY ERWIN | 713.300.0290 | TOMMY.ERWIN@STREAMREALTY.COM



FOR LEASE

6750 Bender Rd, Humble, TX 77396

1-11.46 AC Available



ENTIRE PROPERTY



FOR LEASING INFORMATION, CONTACT:

TYLER MANER | 830.992.0834 | TMANER@STREAMREALTY.COM

WILLIAM CARPENTER | 713.204.4716 | WILLIAM.CARPENTER@STREAMREALTY.COM

TOMMY ERWIN | 713.300.0290 | TOMMY.ERWIN@STREAMREALTY.COM

