

# Tri-City Medical Arts Building

➤ MEDICAL OFFICE FOR LEASE



**MED  
WEST**  
REALTY

Lic # 02161402

Kellie Hill Galligan  
(858) 461-8776

Andrea Firtel  
(858) 337-8262

**161 Thunder Dr | Vista, CA**



# TRI-CITY MEDICAL ARTS BUILDING

The Tri City Medical Arts building is located at 161 Thunder Drive in Vista, CA . This medical office building offers over 30,000 SF of prime medical office space across the street from the renowned Tri-City Medical Center. The building features multiple medical office suites ranging from 800 SF – 8,600 SF with abundant window lines, multiple entrance options, and large open floorplans, providing an ideal environment for medical practices, Vista and Oceanside, part of the vibrant North County San Diego region, are known for their growing populations of young families and retirees, creating a strong demand for quality healthcare services. The North County San Diego region continues to see significant growth in the medical sector, making this location highly desirable for healthcare providers. With its strategic location, modern amenities, and proximity to a major medical center, 161 Thunder Drive is well-positioned to meet the needs of a growing and diverse population.

## PROPERTY FEATURES



### PROMINENT LOCATION & ACCESSIBILITY

Building is located across the street from Tri-City Medical Center, which is situated in the heart of Vista, California



### VISIBILITY

Building top signage to help amplify your brand in the North County San Diego community



### AMPLE PARKING

Ample retail-like parking with a drive-up and walk-in opportunity for patients and staff

Estimate 15 Min Drive

POPULATION ESTIMATES

144,400

AVERAGE HOUSEHOLD INCOME

\$129,000.00

>17 32,057

18-44 56,414

45-64 34,355

65+ 21,574

Data Source:  Placer.ai

PAYOR MIX Within 5 Mile Radius

COMMERCIAL 6.4%

EMPLOYER BASED 48.9%

GOVERNMENT 26.9%

MULTIPLE 17.7%

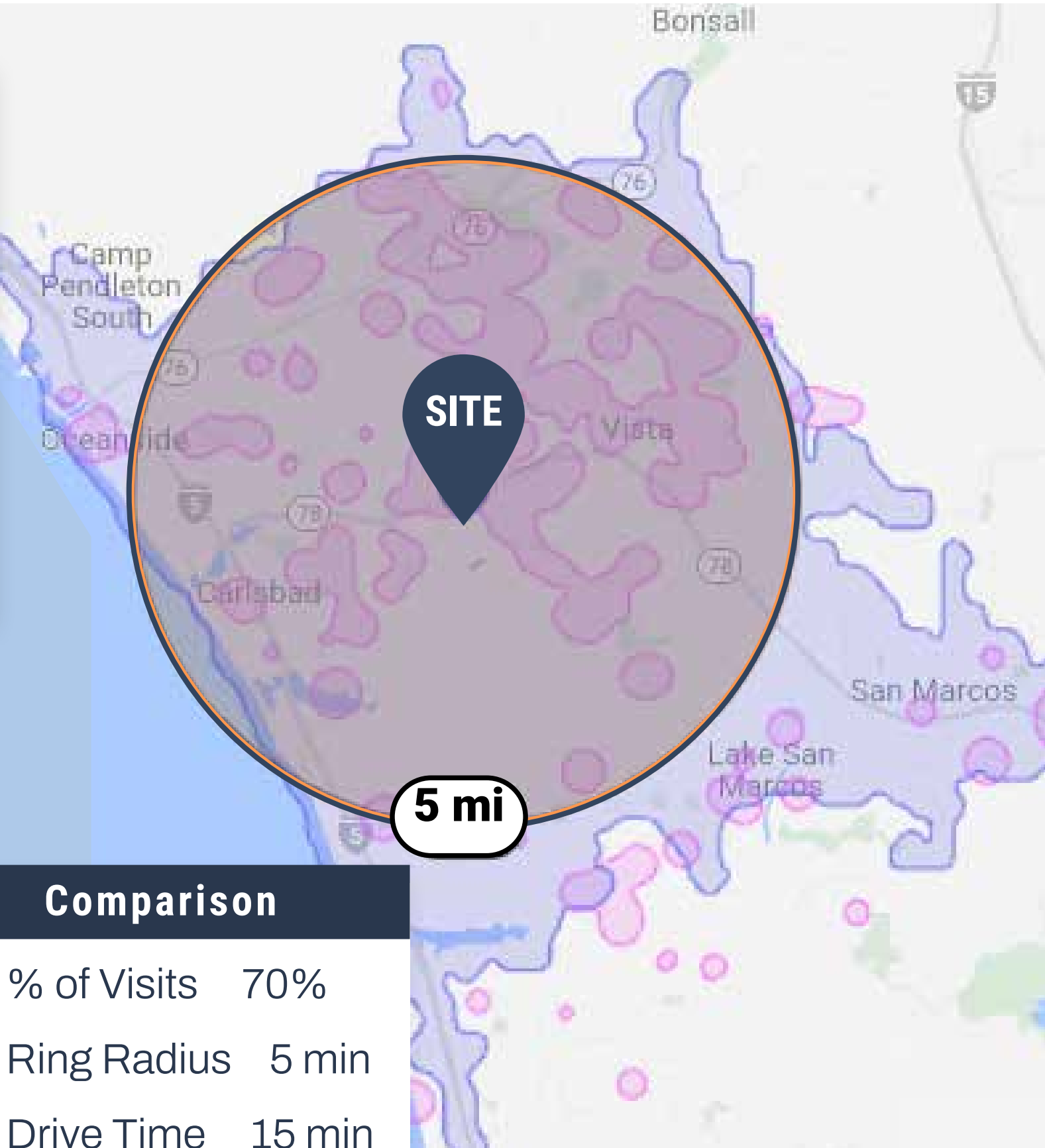
Data Source: 

Comparison

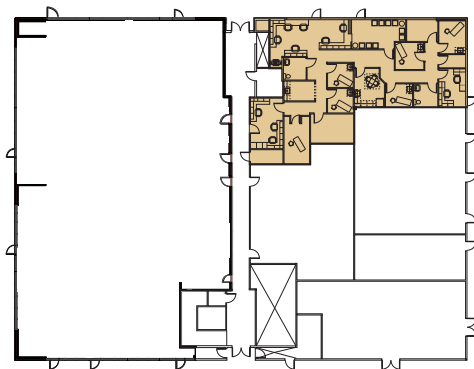
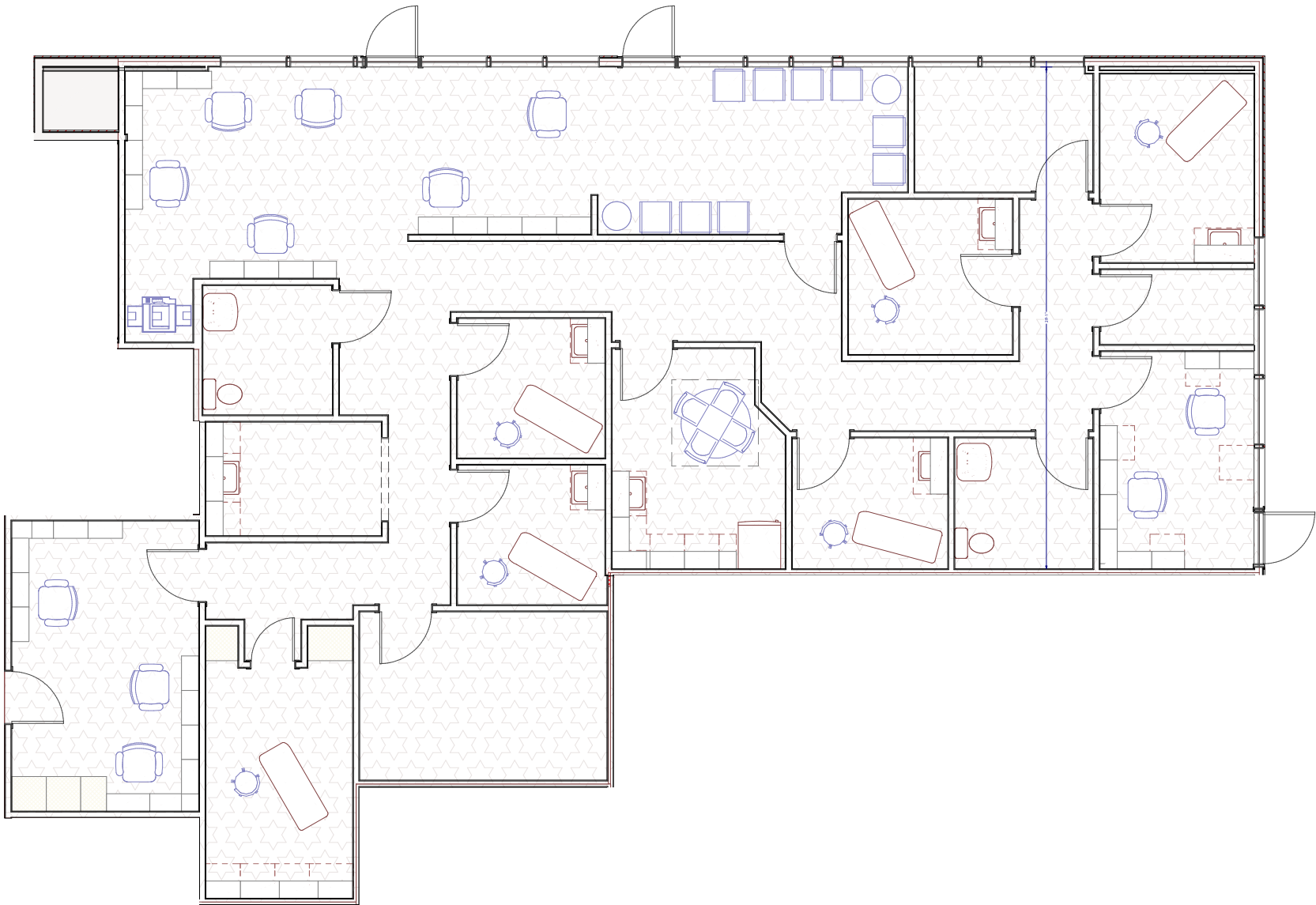
 % of Visits 70%

 Ring Radius 5 min

 Drive Time 15 min



# FLOOR PLAN - FIRST FLOOR



## AVAILABLE SUITE

Suite 106 - 2,683 RSF  
(Contiguous with Suite 108 - 11,730 RSF)

## SUITE DESCRIPTION

Waiting Room, Reception/Admin, 6 Exam Rooms, 2 Doctor's Offices, 2 In-Suite Restrooms, Breakroom, and 2 Storage Rooms

## LEASE RATE

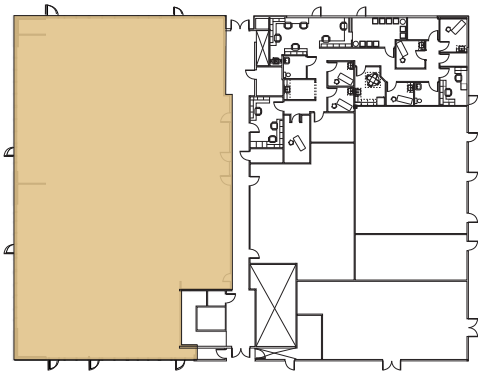
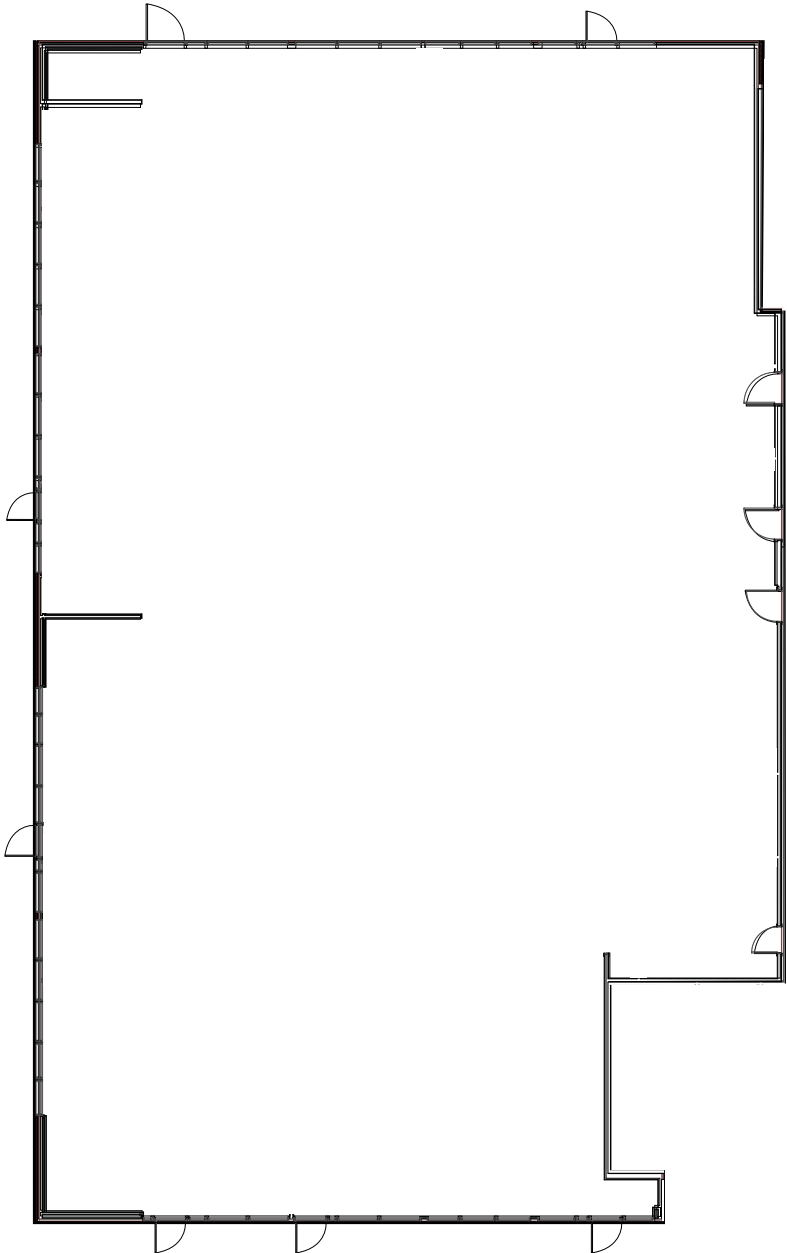
\$2.40 NNN

## Explore Space



CLICK

FLOOR PLAN - FIRST FLOOR



AVAILABLE SUITE

Suite 108 - 8,647 RSF  
(Contiguous with Suite 106 - 11,730 RSF)

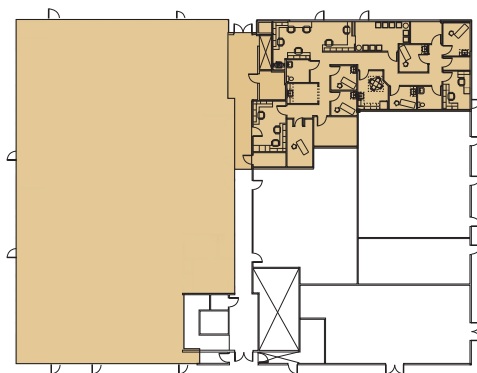
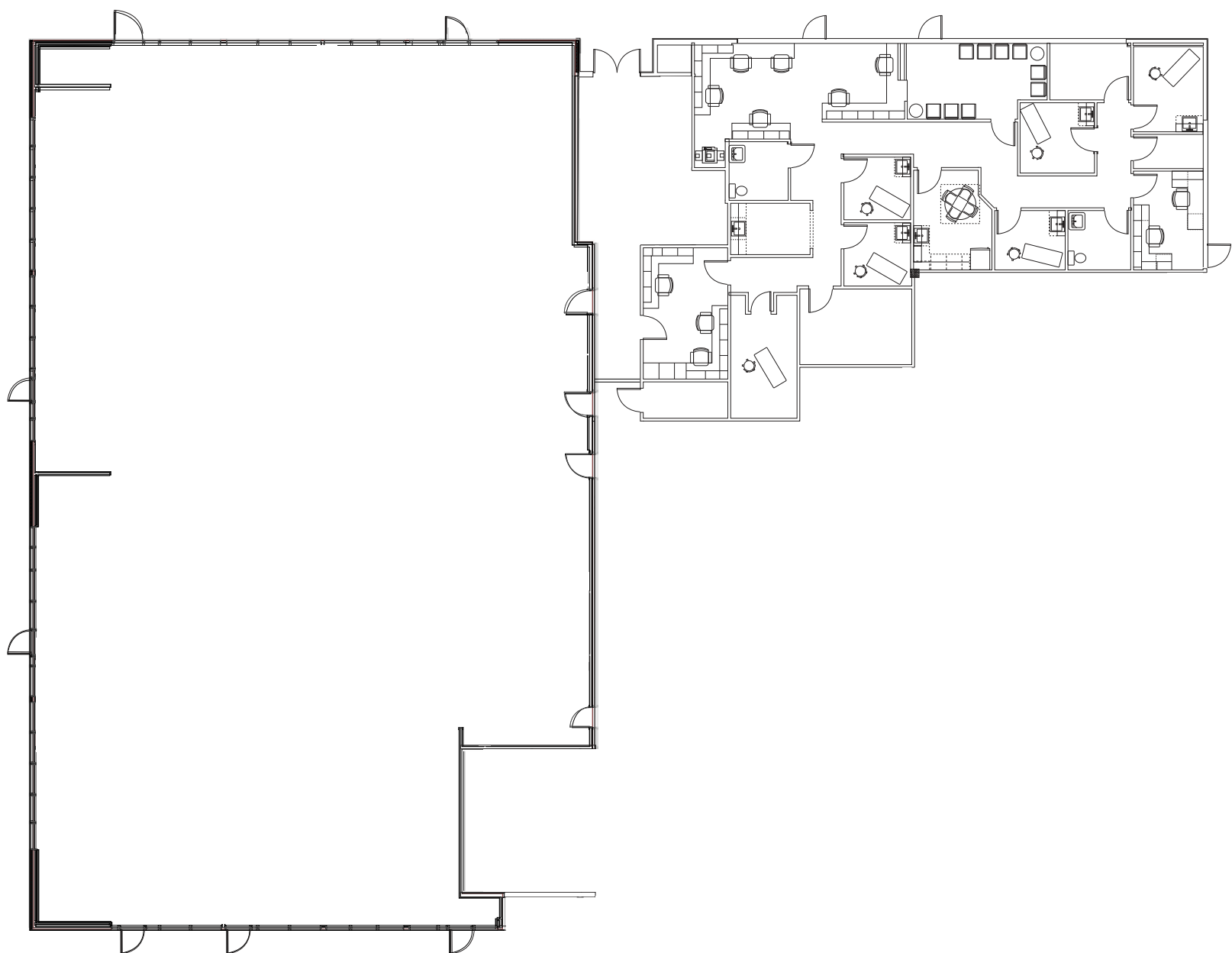
SUITE DESCRIPTION

Shell Space  
Ready for Tenant’s Customization

LEASE RATE

\$2.40 NNN

FLOOR PLAN - FIRST FLOOR



AVAILABLE SUITE

Suite 106 + 108 - 11,730 RSF

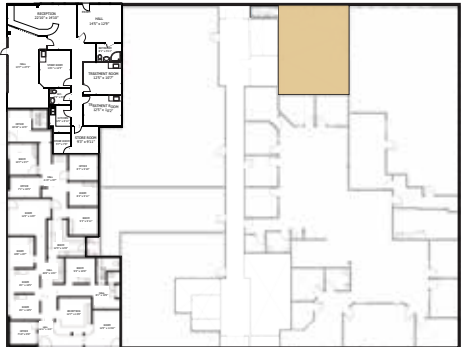
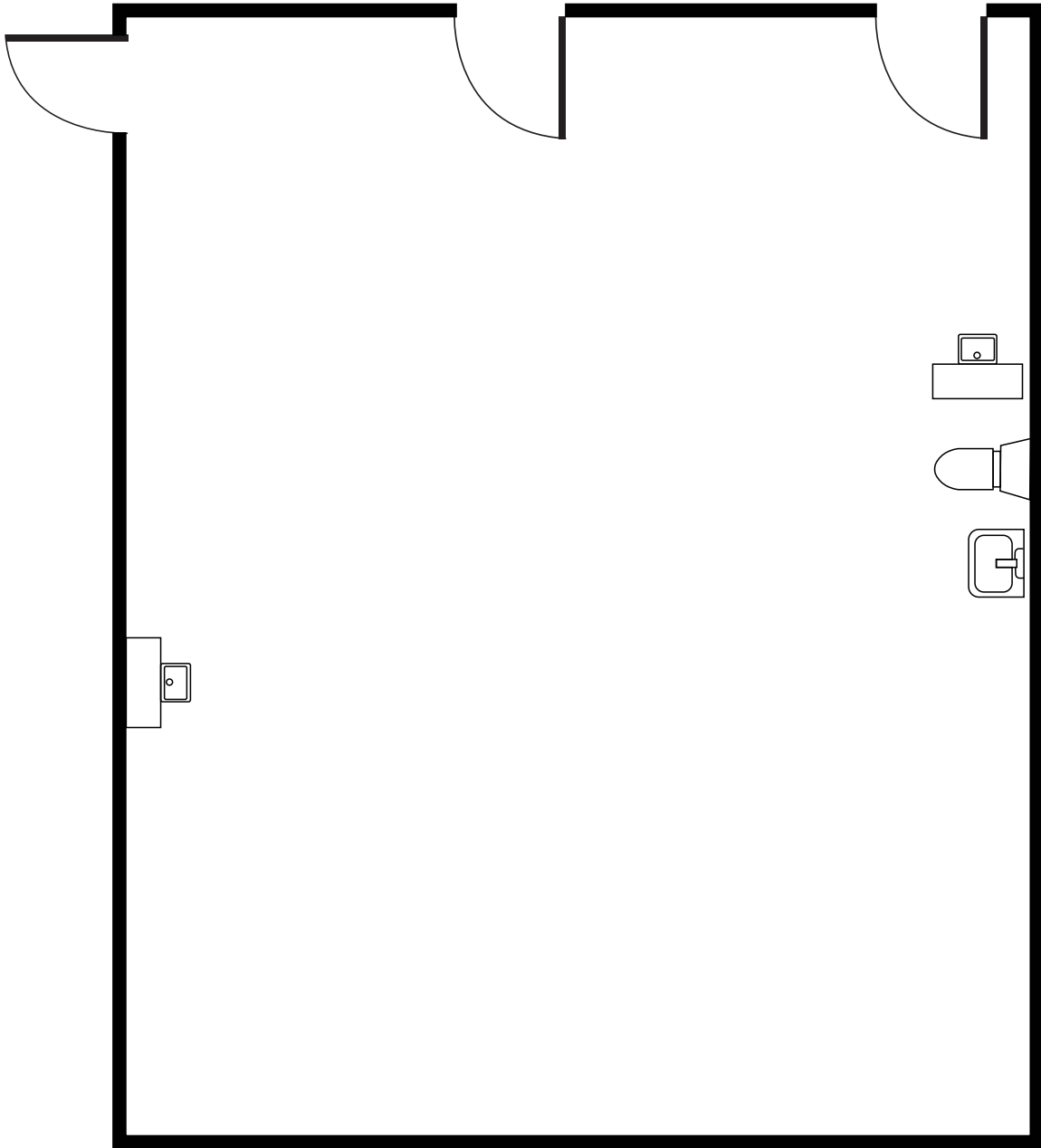
SUITE DESCRIPTION

Rare opportunity to get over 10,000 RSF on the ground floor in Vista, CA. The suite is partially built out, with the remaining suite in grey shell condition. Perfect opportunity for customization for the doctor’s practice.

LEASE RATE

\$2.40 NNN

FLOOR PLAN - SECOND FLOOR



AVAILABLE SUITE

Suite 203 - 812 RSF

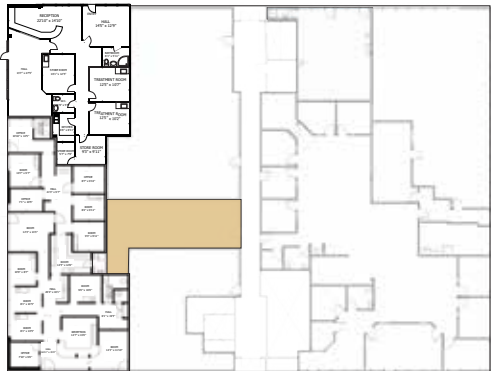
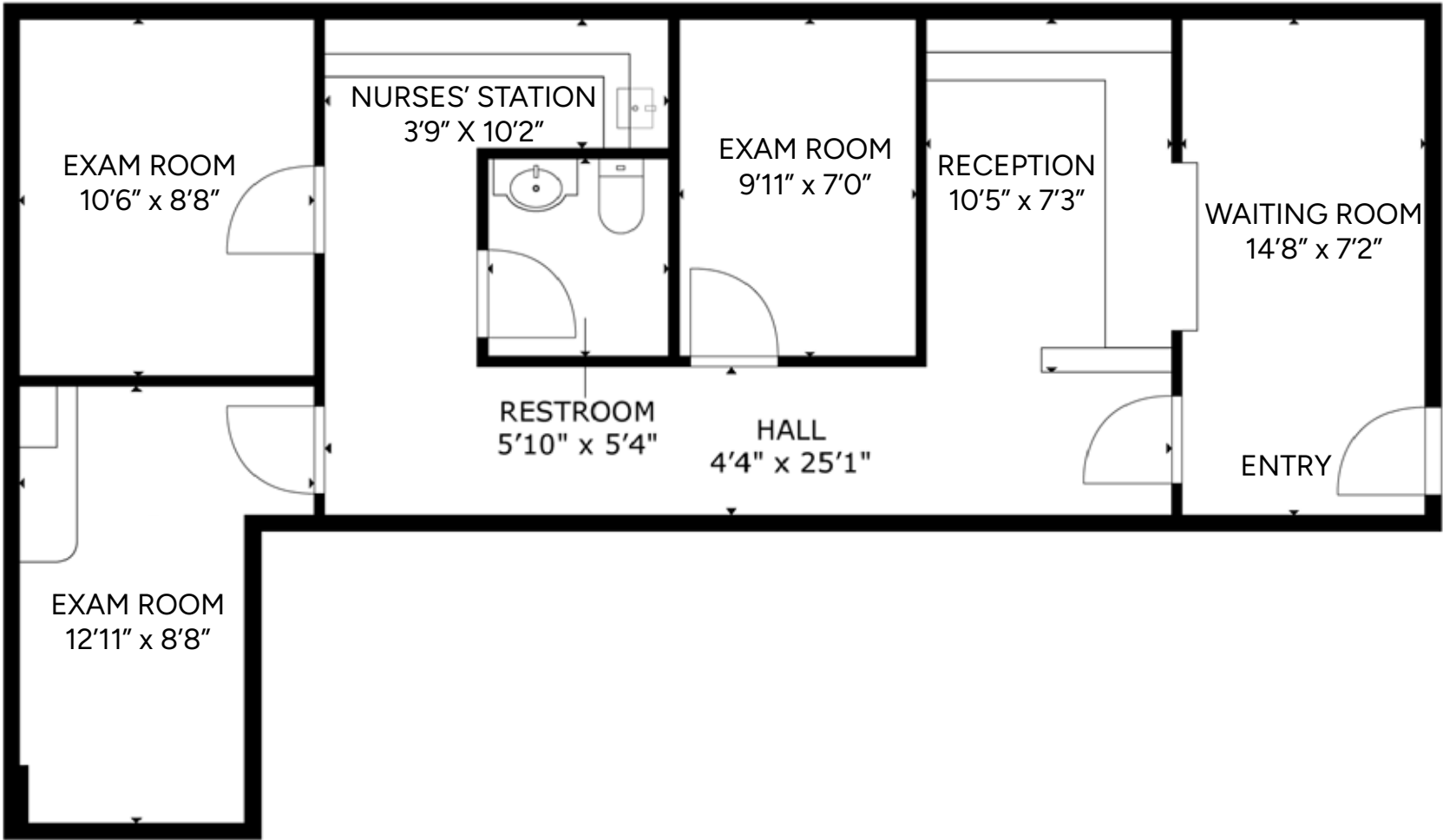
SUITE DESCRIPTION

Open Build-out

LEASE RATE

\$2.40 NNN

FLOOR PLAN - SECOND FLOOR



AVAILABLE SUITE

Suite 209 - 764 RSF

SUITE DESCRIPTION

Waiting Room, Reception/Admin, 3 Exam Rooms, In-Suite Restroom, and Nurses' Station

LEASE RATE

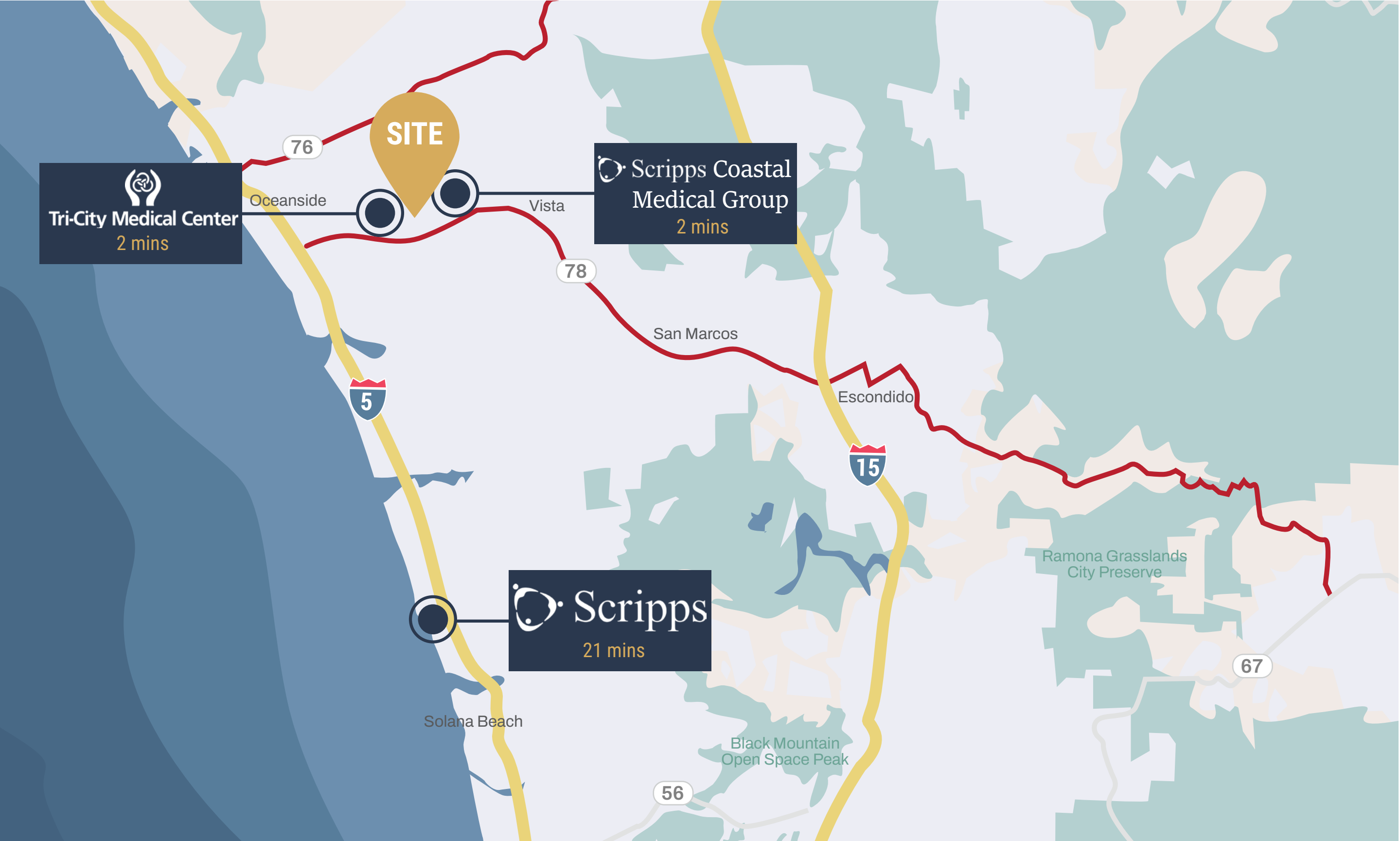
\$2.40 NNN

Explore Space

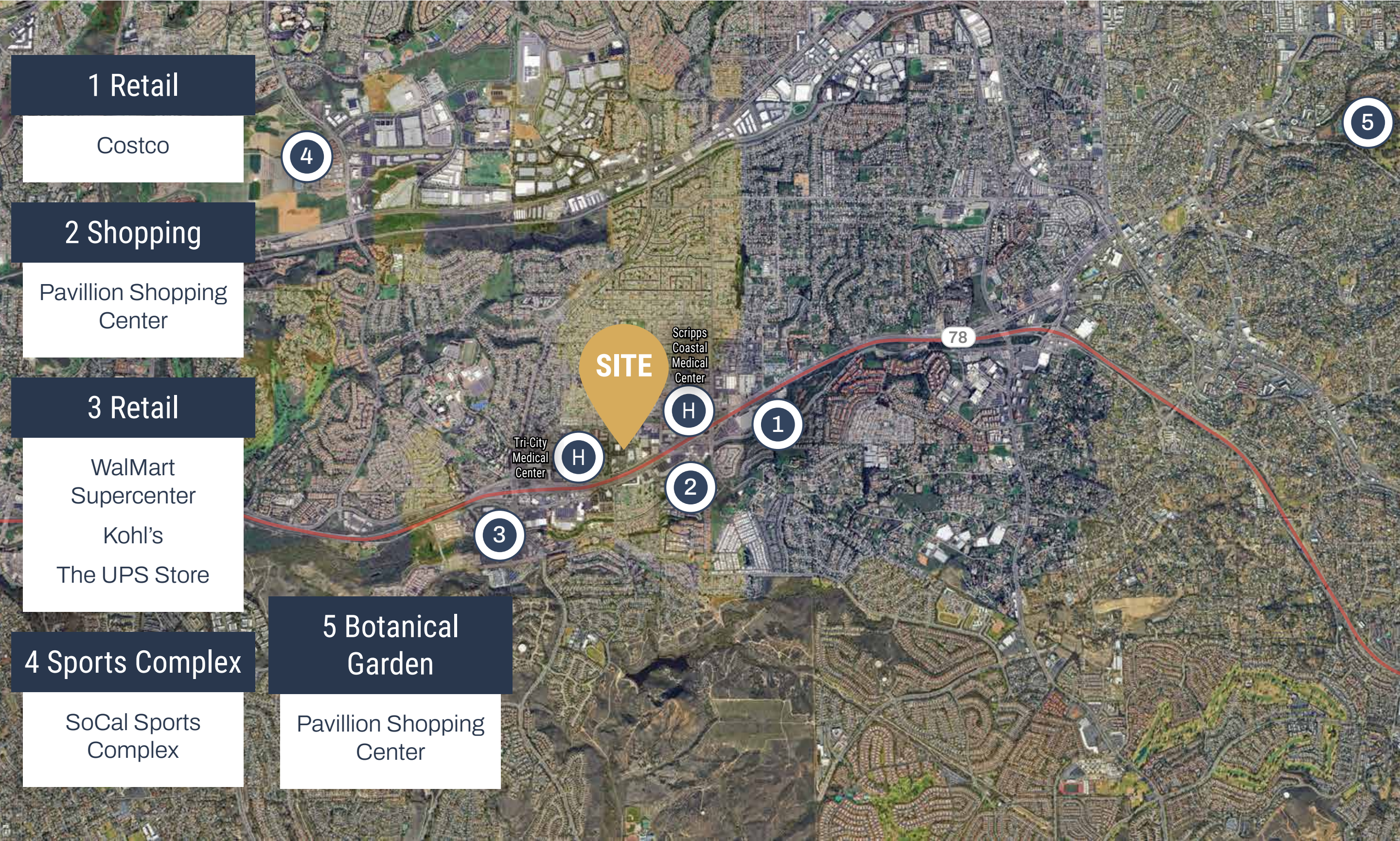


CLICK





AMENITIES AROUND THE PROPERTY





**MED  
WEST**  
REALTY  
MedWestRealty.com

Kellie Hill Galligan  
Kellie@MedWestRealty.com  
(858) 461-8776  
LIC#01923075

Andrea Firtel  
Andrea@MedWestRealty.com  
(858) 337-8262  
LIC#02153481

OWNED & OPERATED BY  
**ShareMD**

Lease with Confidence, Choose MedWest