

35 PARKWOOD DRIVE HOPKINTON, MA



±6,144-12,602 SF OFFICE SPACE FOR LEASE



5 Commonwealth Road, Suite 1A
Natick, MA 01760
508.820.2700
www.svnpcgboston.com

VICTOR GALVANI
VP of Investment Sales
508.271.9225
victor.galvani@svn.com

DISCLAIMER: All rights reserved. This information has been obtained from sources believed reliable, but has not been verified for accuracy or completeness. You should conduct a careful, independent investigation of the property and verify all information. Any reliance on this information is solely at your own risk.

35 PARKWOOD DRIVE

HOPKINTON, MA

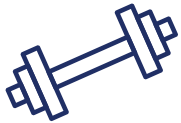
SVN | Parsons Commercial Group | Boston is pleased to present 35 Parkwood Drive in Hopkinton, MA. There is $\pm 6,144$ square feet of office space for lease on the first floor available November 2025. $\pm 12,602$ square feet of office space on the second floor is currently available now.

The building is located in the Hopkinton Corporate Center and was formerly the EMC World Headquarters. Renovated in 2018, the property features a main lobby, large conference rooms, outdoor patio space, common areas with modern finishes, a fitness center with showers, and service kiosks.

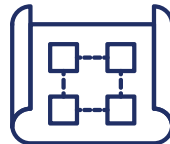
35 Parkwood is located directly off 495, and one exit South of the Mass Pike. Area amenities in close distance include Dunkin Donuts, Starbucks, 110 Grill, Cumberland Farms, Verizon and more.



1 FITNESS CENTER
WITH SHOWERS



2018
YEAR RENOVATED



.5
MILES TO
ROUTE 495
VIA EXIT 21



ELEVATORS

4

**$\pm 6,144$ -
12,602 RSF**

OFFICE SPACE AVAILABLE

3.0 PER 1,000 SF
PARKING RATIO

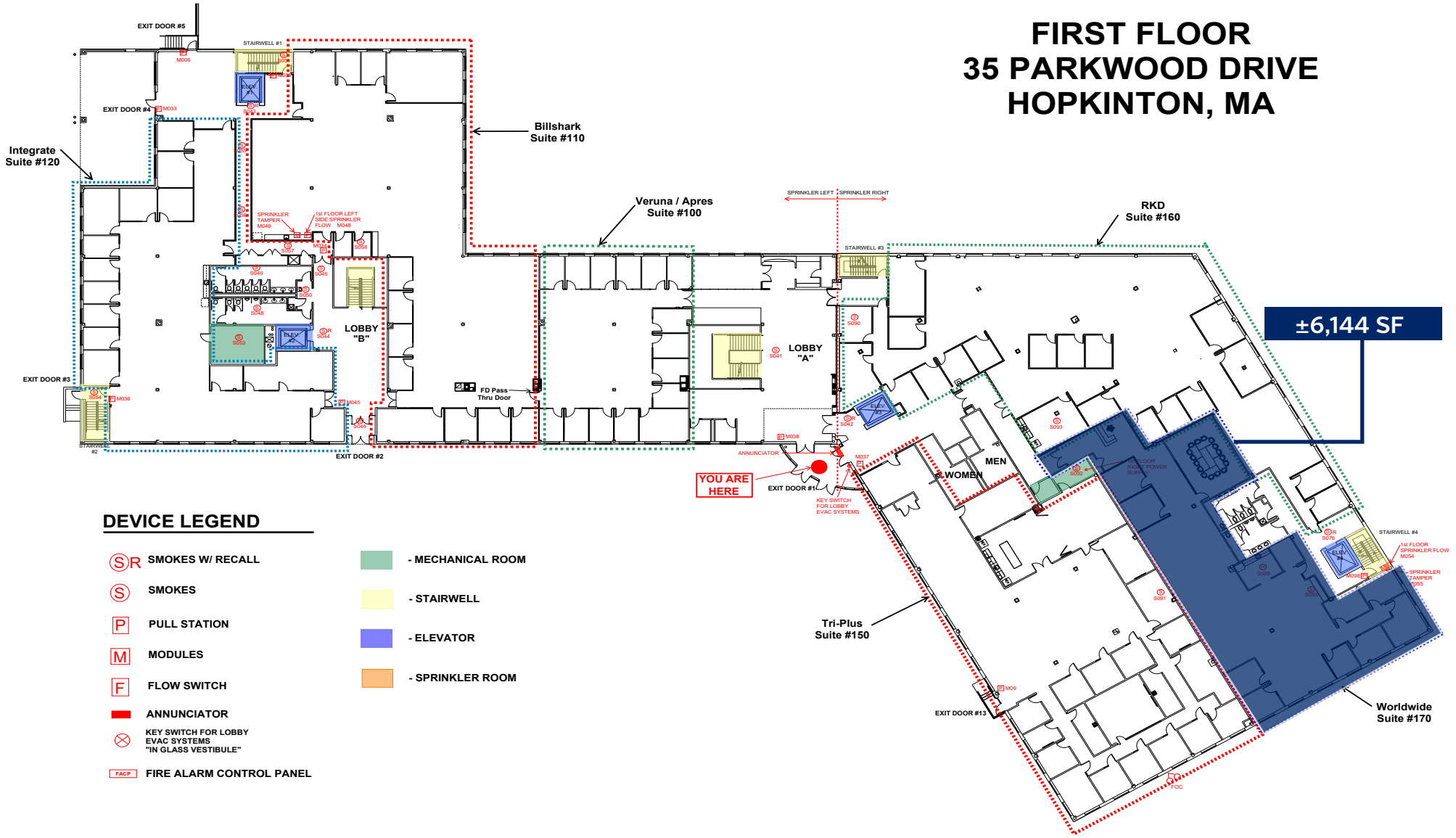


FLOOR PLANS

±6,144 SF | Available November 2025

FIRST FLOOR 35 PARKWOOD DRIVE HOPKINTON, MA

±6,144 SF



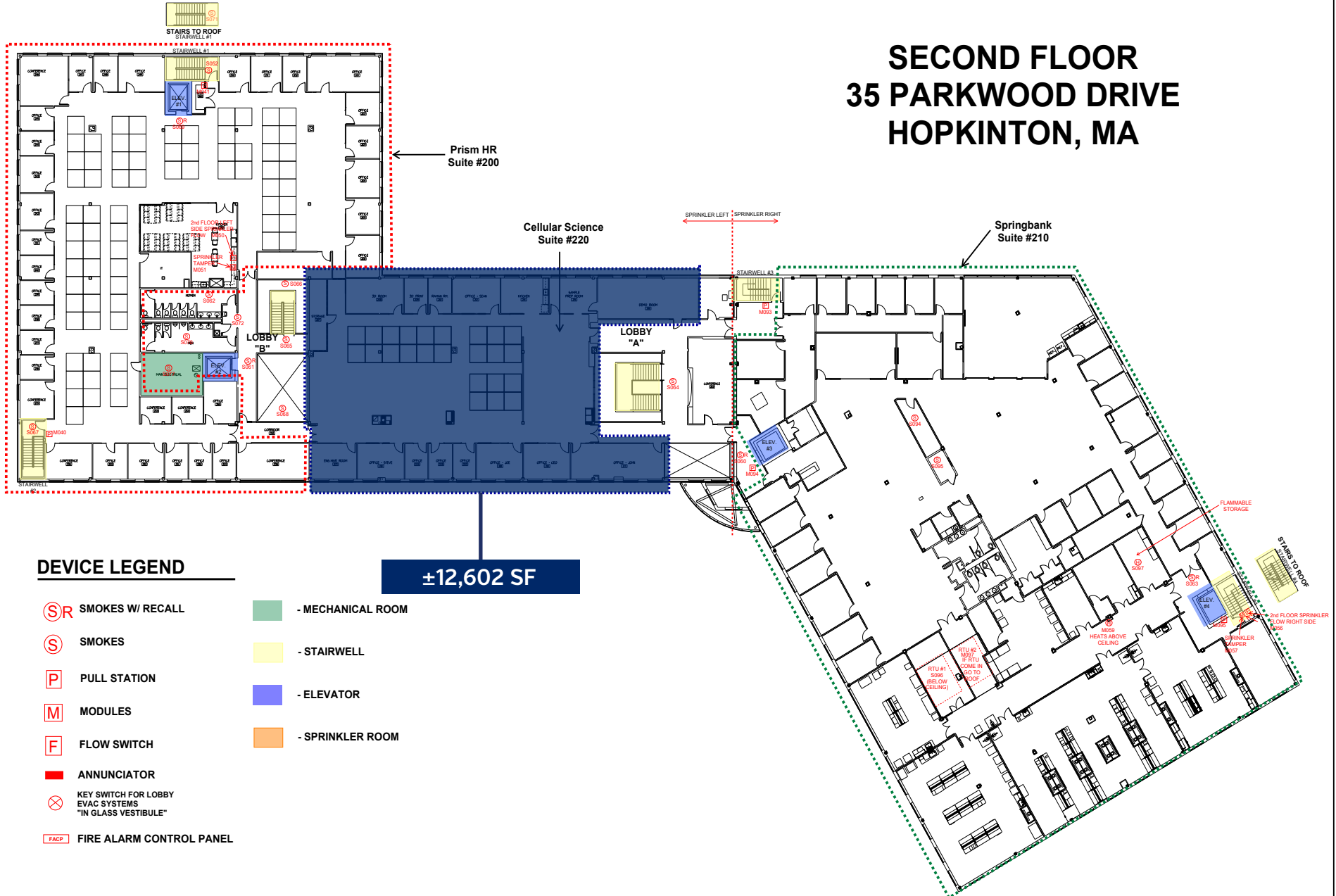
DEVICE LEGEND

- | | |
|---|-------------------|
| SR SMOKES W/ RECALL | - MECHANICAL ROOM |
| S SMOKES | - STAIRWELL |
| P PULL STATION | - ELEVATOR |
| M MODULES | - SPRINKLER ROOM |
| F FLOW SWITCH | |
| ANNUNCIATOR | |
| KEY SWITCH FOR LOBBY EVAC SYSTEMS "IN GLASS VESTIBULE" | |
| FACP FIRE ALARM CONTROL PANEL | |

FLOOR PLANS

±12,602 SF | Second Floor

SECOND FLOOR 35 PARKWOOD DRIVE HOPKINTON, MA



DEVICE LEGEND

- Ⓡ SMOKES W/ RECALL
- Ⓢ SMOKES
- Ⓟ PULL STATION
- Ⓜ MODULES
- ⓕ FLOW SWITCH
- ANNUNCIATOR
- ⊗ KEY SWITCH FOR LOBBY EVAC SYSTEMS "IN GLASS VESTIBULE"
- Ⓛ FIRE ALARM CONTROL PANEL
- - MECHANICAL ROOM
- - STAIRWELL
- - ELEVATOR
- - SPRINKLER ROOM

±12,602 SF



DISCLAIMER: All rights reserved. This information has been obtained from sources believed reliable, but has not been verified for accuracy or completeness. You should conduct a careful, independent investigation of the property and verify all information. Any reliance on this information is solely at your own risk.

5 COMMONWEALTH ROAD, SUITE 200 • NATICK, MASSACHUSETTS 01760

508.820.2700 • WWW.SVNPCGBOSTON.COM
