



## 420 SOUTH HINDS STREET - SODO WAREHOUSE

**9,435 SF** (777 SF Office & 8,658 SF Warehouse)

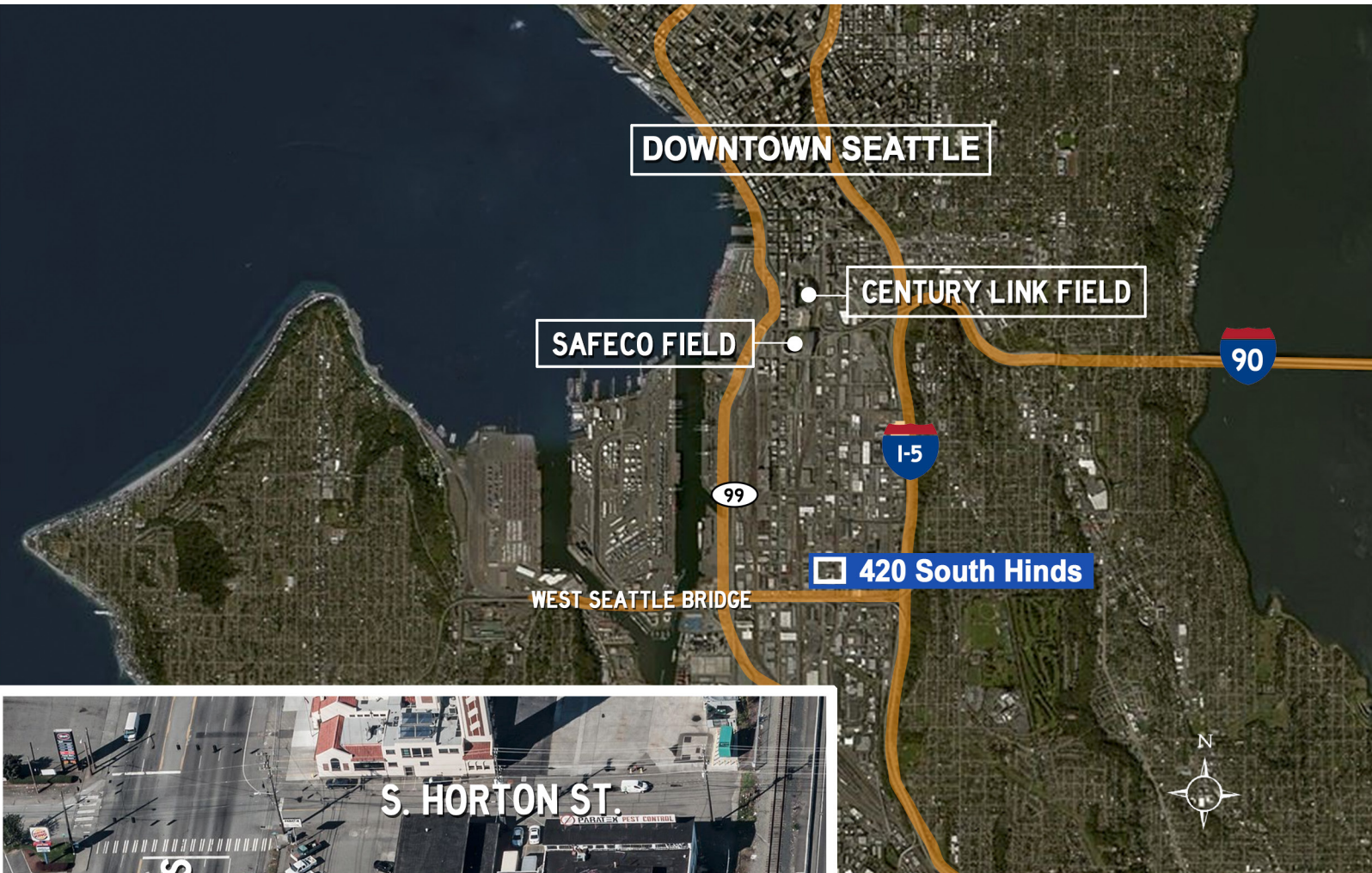
420 South Hinds Street, Seattle, WA 98134

\$1.15/RSF/MO NNN

### Property Highlights

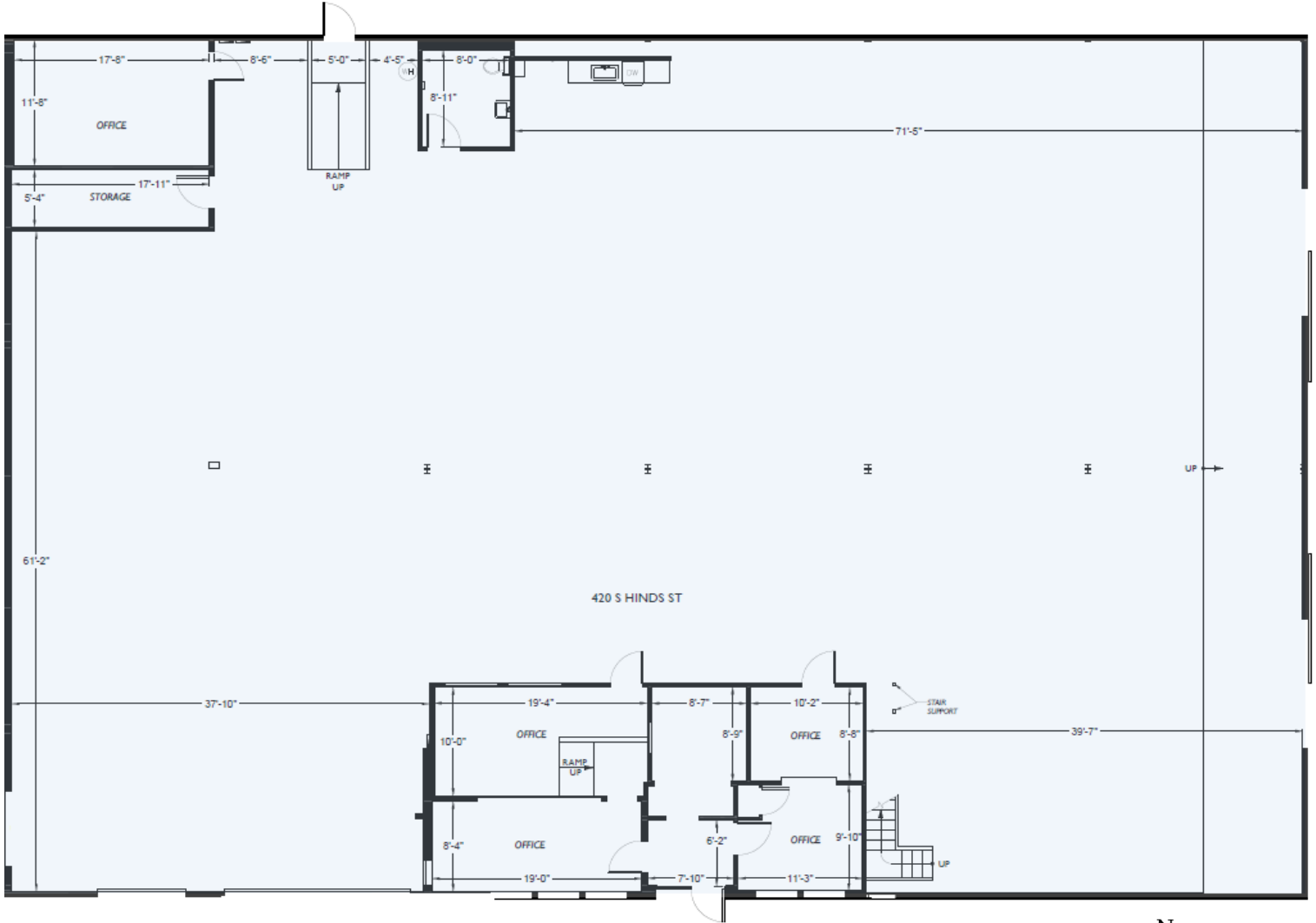
- Single tenant metal building
- 816 SF Mezzanine over offices (not included in rental rate)
- Newer roof, front exterior siding, windows, grade level door and LED high bay lighting
- 3-phase power (Heavy Power)
- Ceiling height is approx. 18' at its highest point
- Two grade level doors approx. 12'x17' & 8'x 8'
- Street Parking - 9+ parking stalls in front of building on Hinds St & on 4th Ave S
- Small secure fenced area approx. 14' x 80' in back of building
- Conveniently located on 4th Ave. S. next to the bus line. Easy access to I-5 & I-90, Hwy 99 & West Seattle Bridge





# FLOOR PLAN | 9,435 SF (777 SF Office & 8,658 SF Warehouse)

\* 816 SF Mezzanine over offices (not included in rental rate)



ROBERT MESSMER, CCIM  
425.458.3902 | 206.948.1577 (c)  
rmessmer@rgmcommercial.com

JENNIFER HEYL  
425-458-3908  
jennifer@rgmcommercial.com

425.452.3052 | rgmcommercial.com

The information contained herein has been received from sources we deem reliable. While we have no reason to doubt its accuracy, we do not guarantee it. You are advised to independently verify all information.

