

COCOA OUT-PARCELS TO NEW MULTI-FAMILY

2992 CIRRUS DRIVE
COCOA, FL 32926

**2.25 ACRES
FOR GROUND LEASE**



For more information, please contact:

ALEC MCNAMARA
Director
Direct +1 407 541 4385
Mobile +1 770 597 5457
alec.mcnamara@cushwake.com

REED FETTER
Senior Associate
Direct +1 407 241 3084
Mobile +1 407 754 5610
reed.fetter@cushwake.com

CUSHMAN & WAKEFIELD
20 N Orange Avenue
Suite 300
Orlando, FL 32801
+1 407 841 8000

Property Description

2.25 acre out-parcel available for ground lease in Cocoa. Out-parcel located in front of brand new Cirrus apartments.

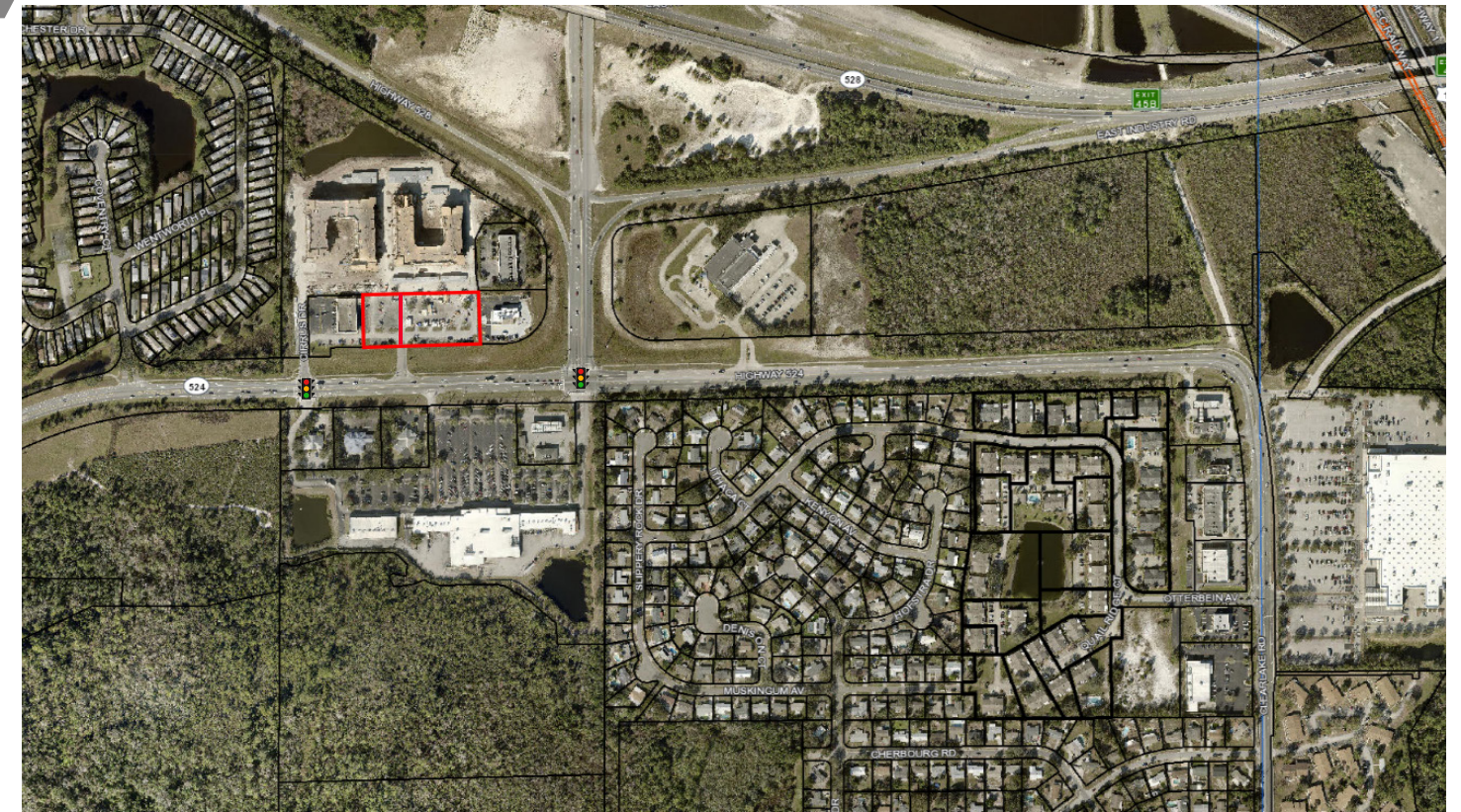
Property Highlights

- Out-parcel to brand new Cirrus Apartments. Cirrus is a luxury multi-family complex with 280 units. Join CVS and Mcdonald's as the premier out-parcels for Cirrus Apartments.
- Pad-ready subject property has full access at a lighted intersection on FL-524.
- The subject property is located across the street from Cocoa Commons. A Publix-anchored shopping center that serves the greater North Cocoa area.
- Site is located right off of the 528 Beachline Expressway. Subject will capture major traffic of beachgoers and cruise-goers due to the proximity to Cape Canaveral.

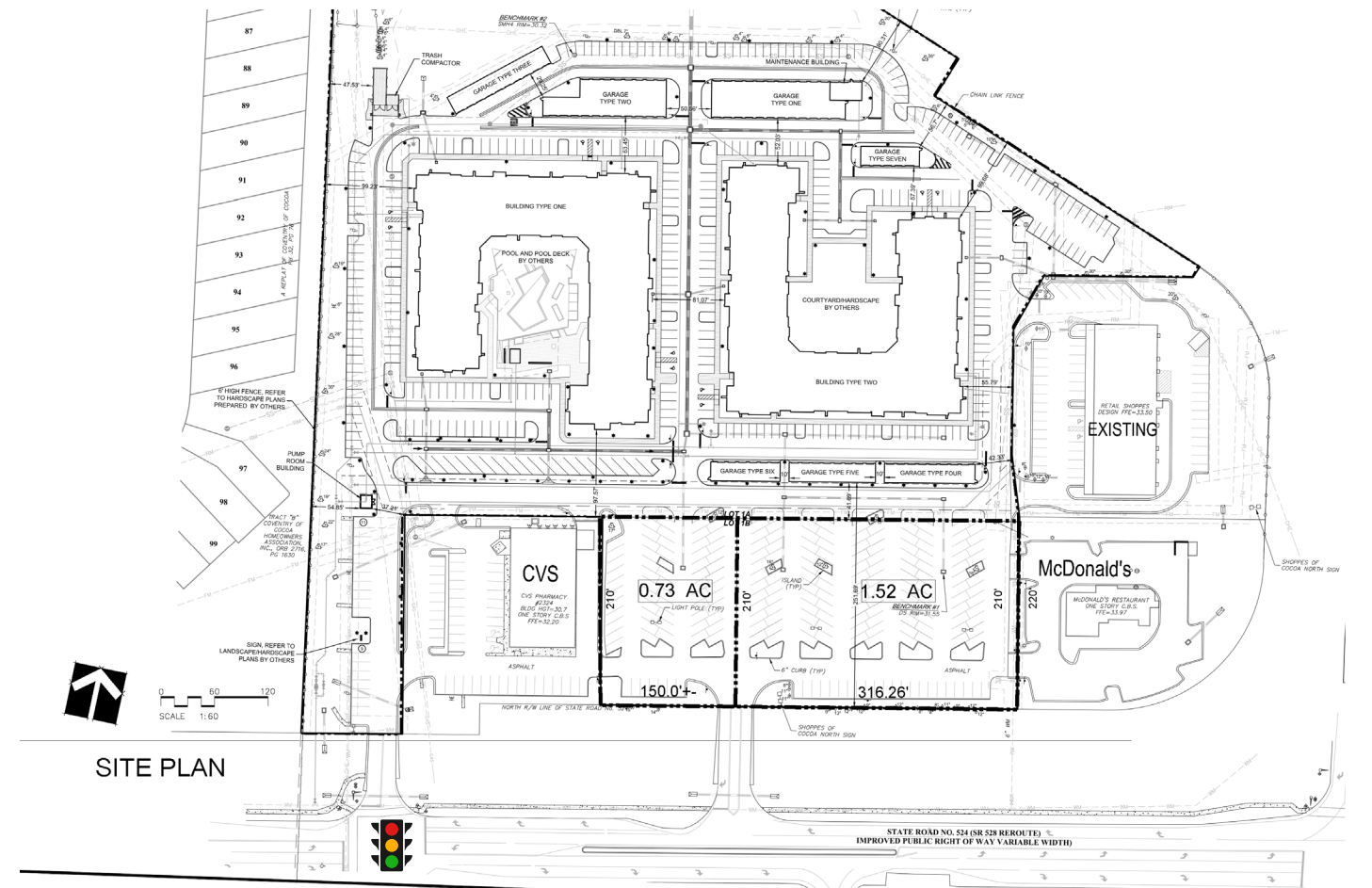
Site Details

- **Address:** 2992 Cirrus Drive, Cocoa, FL 32926
- **Size:** 2.25 Acres
- **Zoning:** PUD (Commercial and Professional Office)
- **Access:** Full lighted access from FL-524
- **Traffic:** 17,700 AADT

Site Plans






2.25 Acres For Ground Lease



Nearby Amenities Aerial



Neighborhood Demographics

	 POPULATION	 AVERAGE HH INCOME	 TOTAL HOUSEHOLDS	TRAFFIC COUNT	
1 Mile	2,805	\$81,976	1,231	SR 524	17,700 AADT
3 Miles	27,119	\$73,801	11,289	E Industry Rd.	25,000 AADT
5 Miles	73,165	\$86,277	30,621		

For more information, please contact:

ALEC MCNAMARA
 Director
 Direct +1 407 541 4385
 Mobile +1 770 597 5457
 alec.mcnamara@cushwake.com

REED FETTER
 Senior Associate
 Direct +1 407 241 3084
 Mobile +1 407 754 5610
 reed.fetter@cushwake.com

CUSHMAN & WAKEFIELD
 20 N Orange Avenue
 Suite 300
 Orlando, FL 32801
 +1 407 841 8000



©2020 Cushman & Wakefield. All rights reserved. The information contained in this communication is strictly confidential. This information has been obtained from sources believed to be reliable but has not been verified. NO WARRANTY OR REPRESENTATION, EXPRESS OR IMPLIED, IS MADE AS TO THE CONDITION OF THE PROPERTY (OR PROPERTIES) REFERENCED HEREIN OR AS TO THE ACCURACY OR COMPLETENESS OF THE INFORMATION CONTAINED HEREIN, AND SAME IS SUBMITTED SUBJECT TO ERRORS, OMISSIONS, CHANGE OF PRICE, RENTAL OR OTHER CONDITIONS, WITHDRAWAL WITHOUT NOTICE, AND TO ANY SPECIAL LISTING CONDITIONS IMPOSED BY THE PROPERTY OWNER(S). ANY PROJECTIONS, OPINIONS OR ESTIMATES ARE SUBJECT TO UNCERTAINTY AND DO NOT SIGNIFY CURRENT OR FUTURE PROPERTY PERFORMANCE.