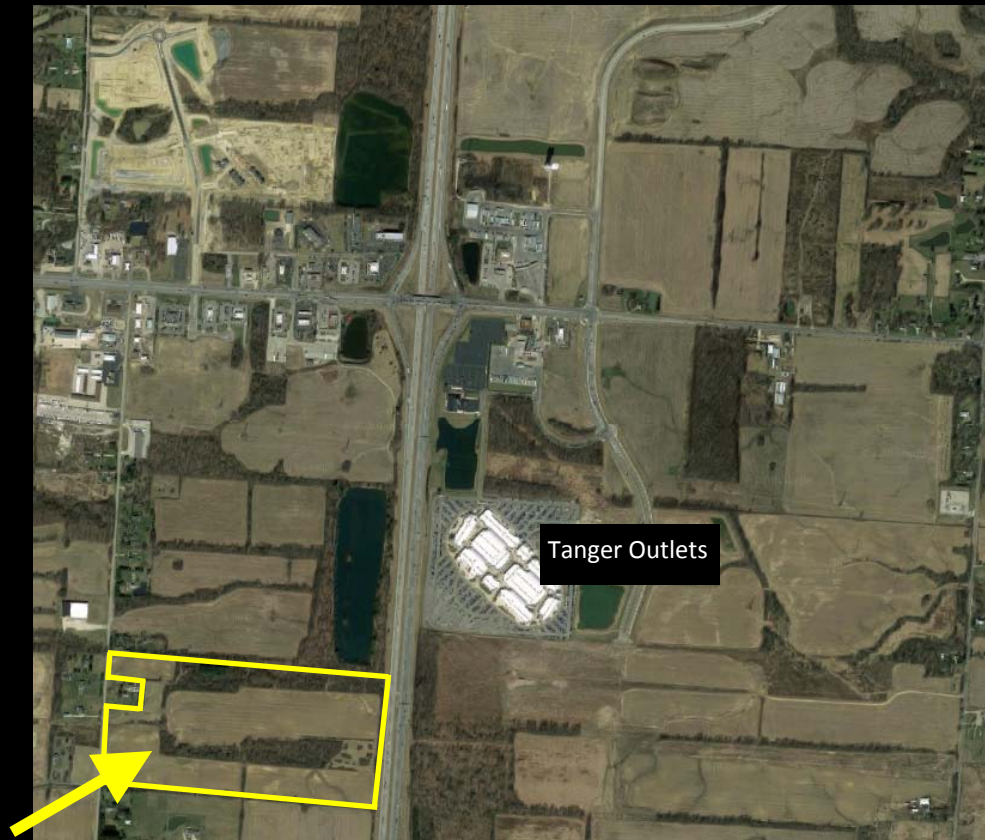


DELAWARE

LAND

COUNTY

70 ACRES FOR SALE



The information contained herein has either been given to us by the owner of the property or obtained from sources that we deem reliable. We have no reason to doubt its accuracy, but we do not guarantee it.

Bill Greenlee  
**ROI Realty Services, Inc.**  
614.221.2500  
bill@roirealty.com



# I-71 INTERCHANGE | AT SR 36/37

COUNTY

LAND

DELAWARE

## LOCATION

3 B's & K & Sherman Road  
Galena, OH 43021  
Delaware County  
Berkshire Township  
Annexed to Village of Sunbury

## ACREAGE

70.24 Acres

## PARCEL NUMBER

41723001031000

## FREEWAY FRONTAGE

± 1,200 feet on I-71

## PRICE

\$72,650/Acre

(Price dependent on acreage and location)

## ANNUAL TAXES

\$2,073.54  
(CAUV)

## MISCELLANEOUS

Olentangy School District  
Flood Plain: Zone X

## UTILITIES

Sanitary - Delaware County from  
Africa or Cheshire Rd  
Water - Del-Co (16" main)  
Gas - Columbia Gas  
Electricity - AEP  
Telephone - Verizon

## ZONING

Planned Commercial & Office District  
under the Comprehensive Land Use Plan  
for Berkshire Township, until Village of  
Sunbury zoning regulations are enacted.



The information contained herein has either been given to us by the owner of the property or obtained from sources that we deem reliable. We have no reason to doubt its accuracy, but we do not guarantee it.

Bill Greenlee  
ROI Realty Services, Inc.

614.221.2500  
bill@roirealty.com



# I-71 INTERCHANGE | AT SR 36/37

COUNTY

LAND

DELAWARE

## DEMOGRAPHICS

Population, 2016 estimate	196,463
Population, percent change, April 1, 2010 to July 1, 2017	12.8%
Housing Units, 2016	71,399
Median value of owner-occupied housing units, 2012-2016	\$267,600
Households 2012-2016	66,544
Median household income, 2012-2016	\$94,234

Source: United States Census Bureau

## ODOT INFORMATION

[District 6—Delaware](#)

[36/37 Design Interchange](#)

[36/37 Phasing Plan](#)

The information contained herein has either been given to us by the owner of the property or obtained from sources that we deem reliable. We have no reason to doubt its accuracy, but we do not guarantee it.

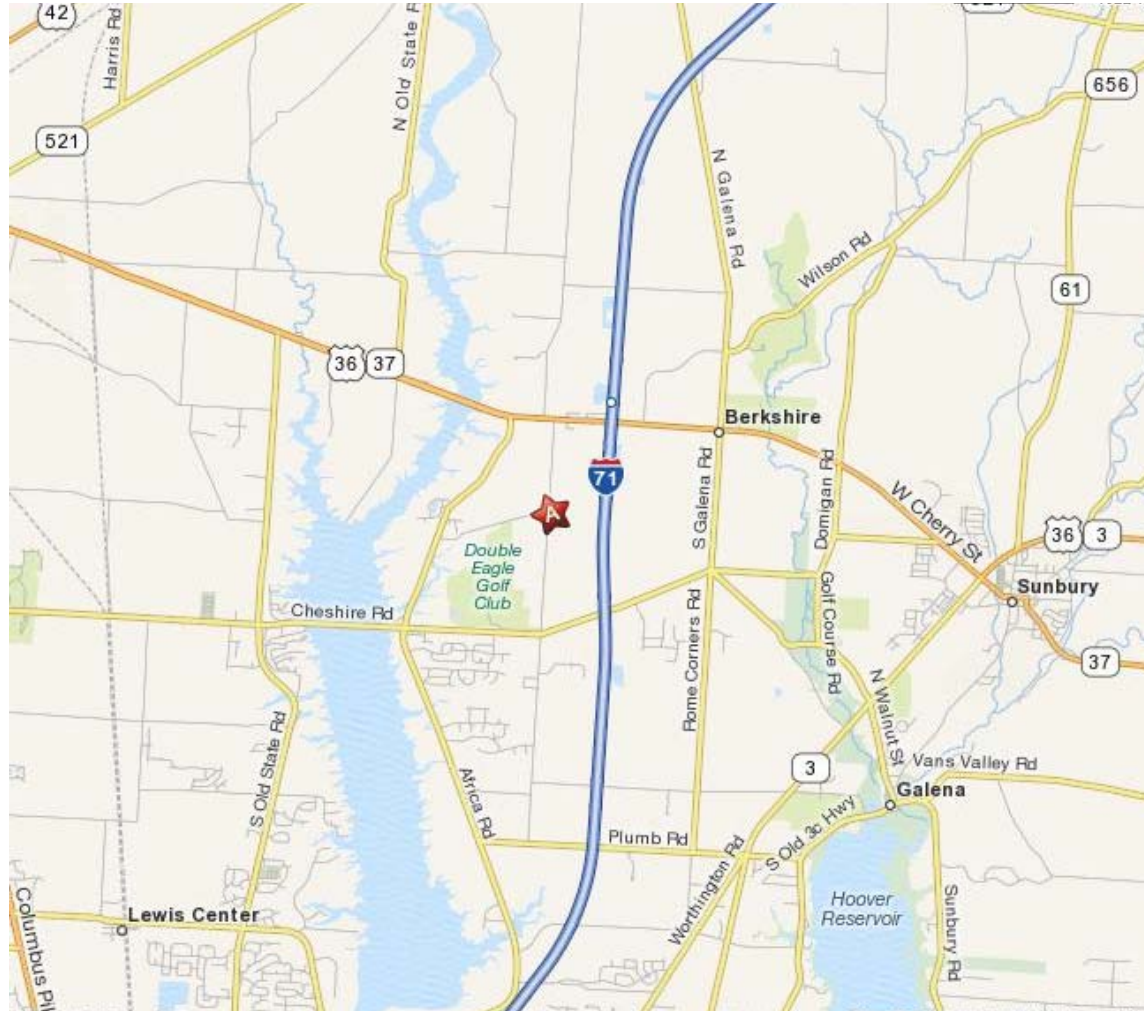
Bill Greenlee  
**ROI Realty Services, Inc.**

614.221.2500  
bill@roirealty.com



# I-71 INTERCHANGE | AT SR 36/37

## LOCATION MAP



The information contained herein has either been given to us by the owner of the property or obtained from sources that we deem reliable. We have no reason to doubt its accuracy, but we do not guarantee it.

Bill Greenlee  
**ROI Realty Services, Inc.**

614.221.2500  
bill@roirealty.com





# I-71 INTERCHANGE | AT SR 36/37

## AREA AMENITIES



TangerOutlets



The information contained herein has either been given to us by the owner of the property or obtained from sources that we deem reliable. We have no reason to doubt its accuracy, but we do not guarantee it.

Bill Greenlee  
ROI Realty Services, Inc.  
614.221.2500  
bill@roirealty.com

