

FILLMORE DRIVE THRU BUILDING

FOR LEASE

AVAILABLE

AVAILABLE

PROPERTY DETAILS

920 South Highway 99 Fillmore, Utah

- 1,000 SF (East End Cap w/ Drive Thru)
- Call Broker for Pricing
- Hwy 99: 3,007 ADT
- I-15: 22,522 ADT
- Direct Access to I-15
- Across the street from one of the most visited Mavericks in UT
- LOCAL TENANTS: Costa Vida, Burger King, Arby's, Maverik

NEARBY RETAILERS



2025 DEMOS

EST. POPULATION



1 MILE » 127
3 MILE » 2,828
5 MILE » 2,982

EST. HOUSEHOLDS



1 MILE » 41
3 MILE » 914
5 MILE » 965

EST. AVERAGE HH INCOME



1 MILE » \$93,756
3 MILE » \$94,417
5 MILE » \$93,868



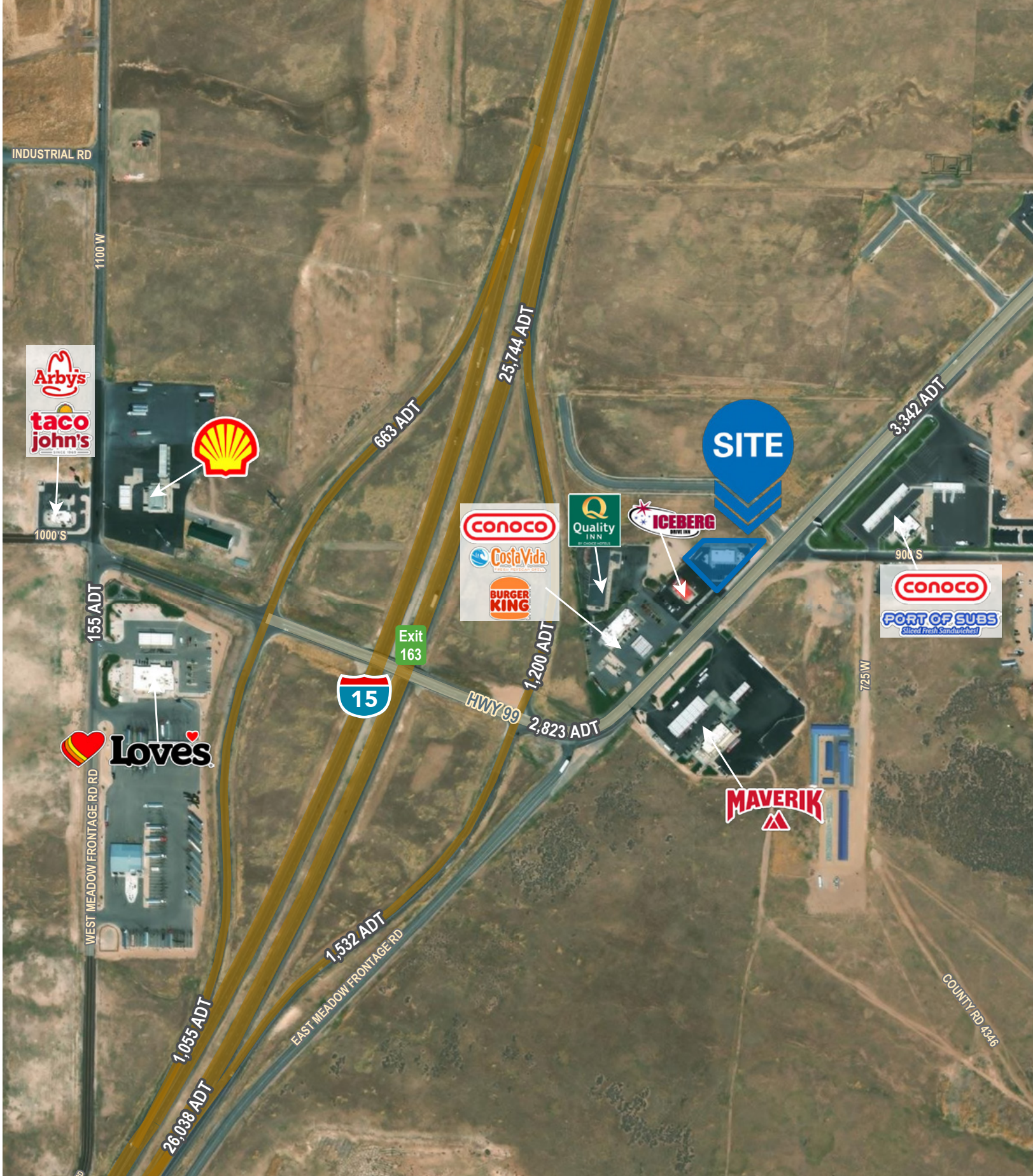
MIKE MEDINA
m.medina@newmarkmw.com
direct 801.416.1049
[View Profile](#)

ALBERTO VAZQUEZ
avazquez@newmarkmw.com
direct 801.852.8574
[View Profile](#)

PARKER DIXON
pdixon@newmarkmw.com
direct 801.391.2552
[View Profile](#)

**FULL SERVICE
COMMERCIAL REAL ESTATE**
312 East South Temple
Salt Lake City, Utah 84111
Office 801.456.8800
www.newmarkmw.com





MIKE MEDINA
 m.medina@newmarkmw.com
 direct 801.416.1049
[View Profile](#)

ALBERTO VAZQUEZ
 avazquez@newmarkmw.com
 direct 801.852.8574
[View Profile](#)

PARKER DIXON
 pdixon@newmarkmw.com
 direct 801.391.2552
[View Profile](#)

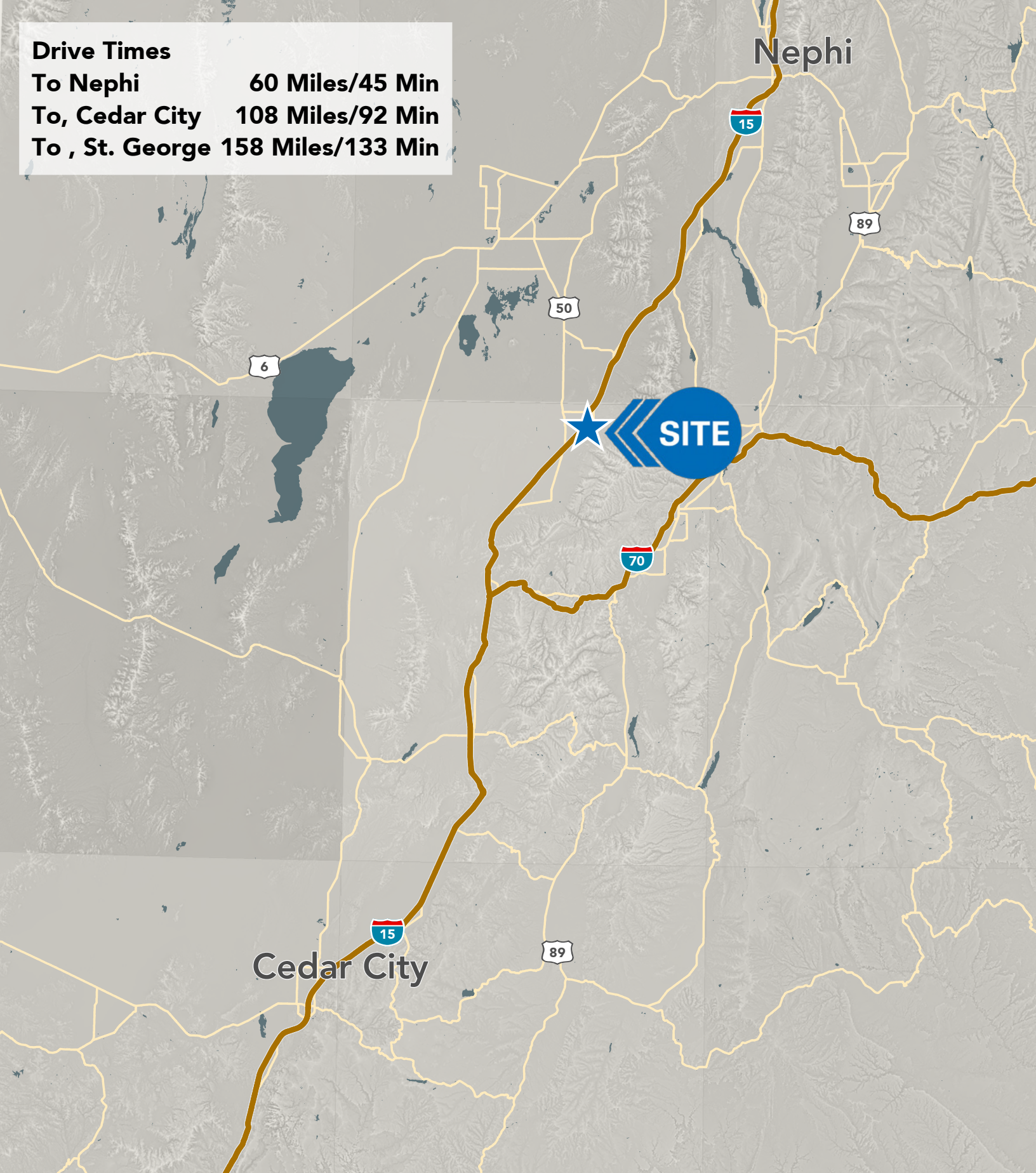
**FULL SERVICE
 COMMERCIAL REAL ESTATE**
 312 East South Temple
 Salt Lake City, Utah 84111
 Office 801.456.8800
www.newmarkmw.com

Drive Times

To Nephi 60 Miles/45 Min

To, Cedar City 108 Miles/92 Min

To , St. George 158 Miles/133 Min



MIKE MEDINA
m.medina@newmarkmw.com
direct 801.416.1049
[View Profile](#)

ALBERTO VAZQUEZ
avazquez@newmarkmw.com
direct 801.852.8574
[View Profile](#)

PARKER DIXON
pdixon@newmarkmw.com
direct 801.391.2552
[View Profile](#)

**FULL SERVICE
COMMERCIAL REAL ESTATE**
312 East South Temple
Salt Lake City, Utah 84111
Office 801.456.8800
www.newmarkmw.com