

128 28<sup>TH</sup> STREET SW  
WYOMING, MICHIGAN

RETAIL/BUSINESS FOR SALE  
2,460 Square Feet Available



**SIGNATURE  
ASSOCIATES**  
KNOW SIGNATURE | KNOW RESULTS

**BOSNA EXPRESS**

**PRICE REDUCED**



## PROPERTY FEATURES

- 2,460 total square feet available
- Two parcels totaling 0.18 acres included
- Zoned B-2
- Built in 1980; remodeled in 2021
- Sale Price: ~~\$750,000~~ \$495,000 (\$201.22/sf)

**Comments:** Full turn-key establishment with over 25+ years in the business. Comes fully equipped, with 16' hood system, tables, prep-tables and all equipment. Owner just put over \$45,000 into new Air Makeup System, Hood System & Fans. Furnace installed in 2017 with HVAC, roof and tankless water system in 2018. Owner will review all offers. Store can do over half a million in sales for lunch and dinner only.



For more information, please contact:

**JOE RIZQALLAH**  
(616) 822 6310

jrizzqallah@signatureassociates.com

**PETER CACHEY**  
(616) 259 6386

pcachey@signatureassociates.com

**SIGNATURE ASSOCIATES**  
1188 East Paris Ave SE, Suite 220  
Grand Rapids, MI 49546  
www.signatureassociates.com

# 128 28<sup>th</sup> Street SW - Wyoming, Michigan

## Retail/Business for Sale

2,460  
Square Feet  
AVAILABLE

### Site Plan

## 28TH STREET SW / M-11



For more information, please contact:

**JOE RIZQALLAH**

(616) 822 6310

[jrizqallah@signatureassociates.com](mailto:jrizqallah@signatureassociates.com)

**PETER CACHEY**

(616) 259 6386

[pcachey@signatureassociates.com](mailto:pcachey@signatureassociates.com)

**SIGNATURE ASSOCIATES**

1188 East Paris Ave SE, Suite 220

Grand Rapids, MI 49546

[www.signatureassociates.com](http://www.signatureassociates.com)

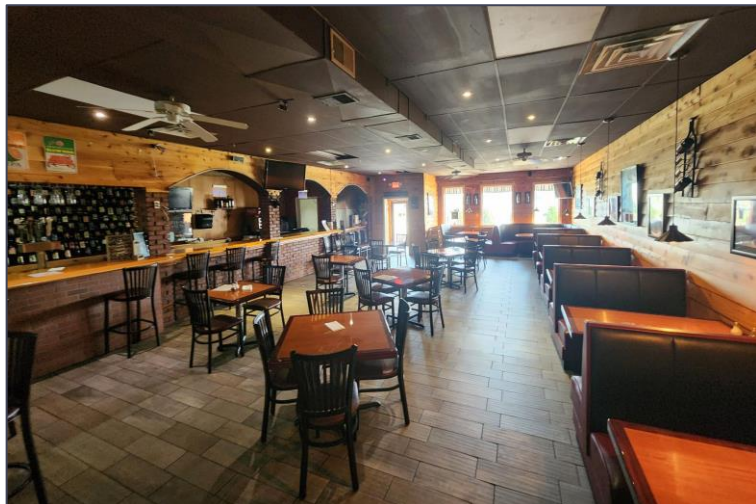


# 128 28<sup>th</sup> Street SW - Wyoming, Michigan

## Retail/Business for Sale

2,460  
Square Feet  
AVAILABLE

### Interior Photos



For more information, please contact:

**JOE RIZQALLAH**

(616) 822 6310

[jrizqallah@signatureassociates.com](mailto:jrizqallah@signatureassociates.com)

**PETER CACHEY**

(616) 259 6386

[pcachey@signatureassociates.com](mailto:pcachey@signatureassociates.com)

**SIGNATURE ASSOCIATES**

1188 East Paris Ave SE, Suite 220

Grand Rapids, MI 49546

[www.signatureassociates.com](http://www.signatureassociates.com)

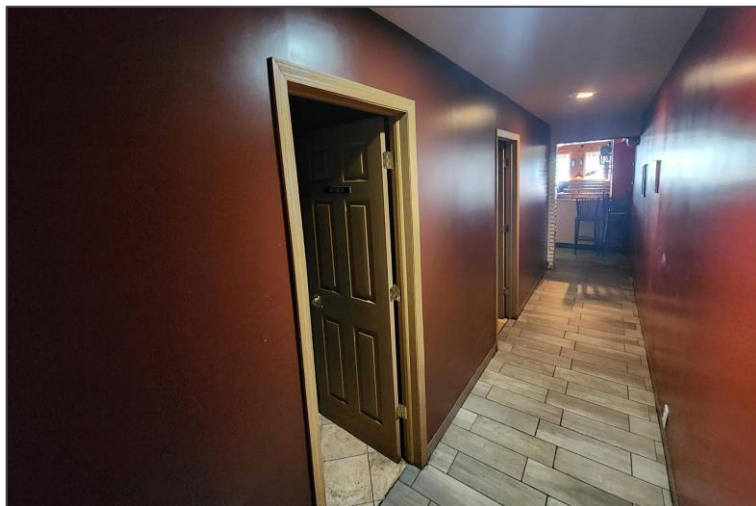


# 128 28<sup>th</sup> Street SW - Wyoming, Michigan

## Retail/Business for Sale

2,460  
Square Feet  
AVAILABLE

### Interior Photos



### Exterior Views



For more information, please contact:

**JOE RIZQALLAH**

(616) 822 6310

[jrizqallah@signatureassociates.com](mailto:jrizqallah@signatureassociates.com)

**PETER CACHEY**

(616) 259 6386

[pcachey@signatureassociates.com](mailto:pcachey@signatureassociates.com)

**SIGNATURE ASSOCIATES**

1188 East Paris Ave SE, Suite 220

Grand Rapids, MI 49546

[www.signatureassociates.com](http://www.signatureassociates.com)



# 128 28<sup>th</sup> Street SW - Wyoming, Michigan

Retail/Business for Sale

2,460  
Square Feet  
AVAILABLE

Aerial



DEMOGRAPHICS			TRAFFIC COUNTS (TWO-WAY)	
	POPULATION	MED. HH INCOME		
1 MILE	13,962	\$61,538	43,242	28 <sup>th</sup> St SW west of Buchanan Ave SW
3 MILE	126,449	\$62,141	38,343	28 <sup>th</sup> St SW east of Buchanan Ave SW
5 MILE	294,288	\$69,546	9,050	Buchanan Ave SW north of 28 <sup>th</sup> St SW
			6,754	Buchanan Ave SW south of 28 <sup>th</sup> St Sw

For more information, please contact:

**JOE RIZQALLAH**

(616) 822 6310

jrizzqallah@signatureassociates.com

**PETER CACHEY**

(616) 259 6386

pcachey@signatureassociates.com

**SIGNATURE ASSOCIATES**

1188 East Paris Ave SE, Suite 220

Grand Rapids, MI 49546

www.signatureassociates.com