

FOR LEASE

wyrickrobbins

THE SUMMIT

4101

WYRICK ROBBINS
YATES & PONTON

THE SUMMIT

4101 Lake Boone Trail | Raleigh, NC 27607



CAPITAL
ASSOCIATES®

THE SUMMIT

4101 Lake Boone Trail | Raleigh, NC 27607

PROPERTY TYPE	Office
BUILDING SIZE	120,254 SF
YEAR BUILT	1989
COUNTY	Wake
LOCATION	Raleigh, NC
FLOORS	5



TRIPP BRADSHAW

919.749.0004 (c)

919.233.9901 (o)

tbradshaw@capitalassociates.com

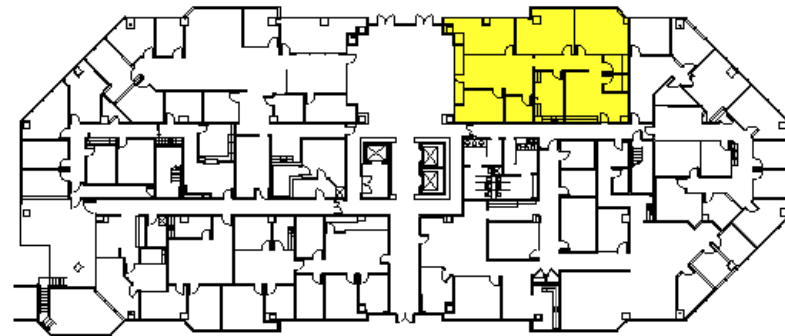
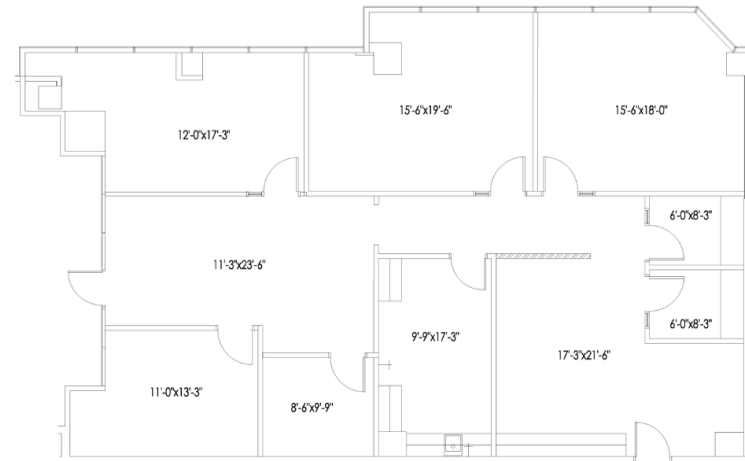
THE SUMMIT

4101 Lake Boone Trail | Raleigh, NC 27607

AVAILABLE
June 2026

First Floor
Suite 122

2,566 SF



TRIPP BRADSHAW

919.749.0004 (c)

919.233.9901 (o)

tbradshaw@capitalassociates.com

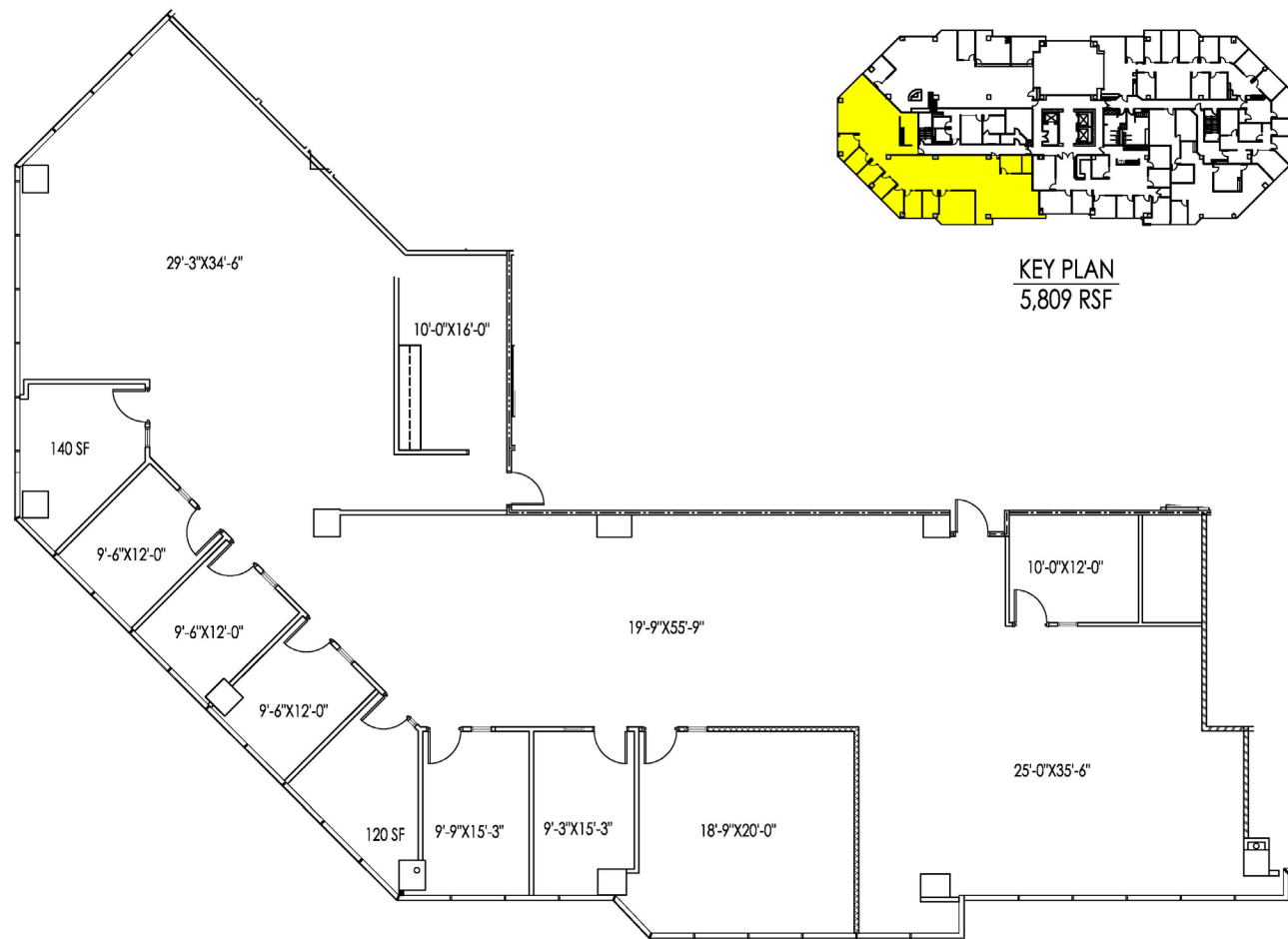
THE SUMMIT

4101 Lake Boone Trail | Raleigh, NC 27607

AVAILABLE

Second Floor
Suite 206

5,809 SF
Subdividable



KEY PLAN
5,809 RSF

THE SUMMIT

4101 Lake Boone Trail | Raleigh, NC 27607

ABOUT

The Summit is a 120,000 SF five-story, Class A granite office building featuring a two-story granite and marble lobby, polished bronze accents, structured parking, and a mature landscape.

LOCATION

Convenient West Raleigh location near retail, dining, hotel, and banking opportunities is only minutes from Interstates 40, 440 and US Highway 70 and is easily accessible to downtown, North Raleigh, Cary, RDU International Airport, and Research Triangle Park.

Walk Score®



62

SOMEWHAT WALKABLE

Some errands can be accomplished on foot.



36

SOME TRANSIT

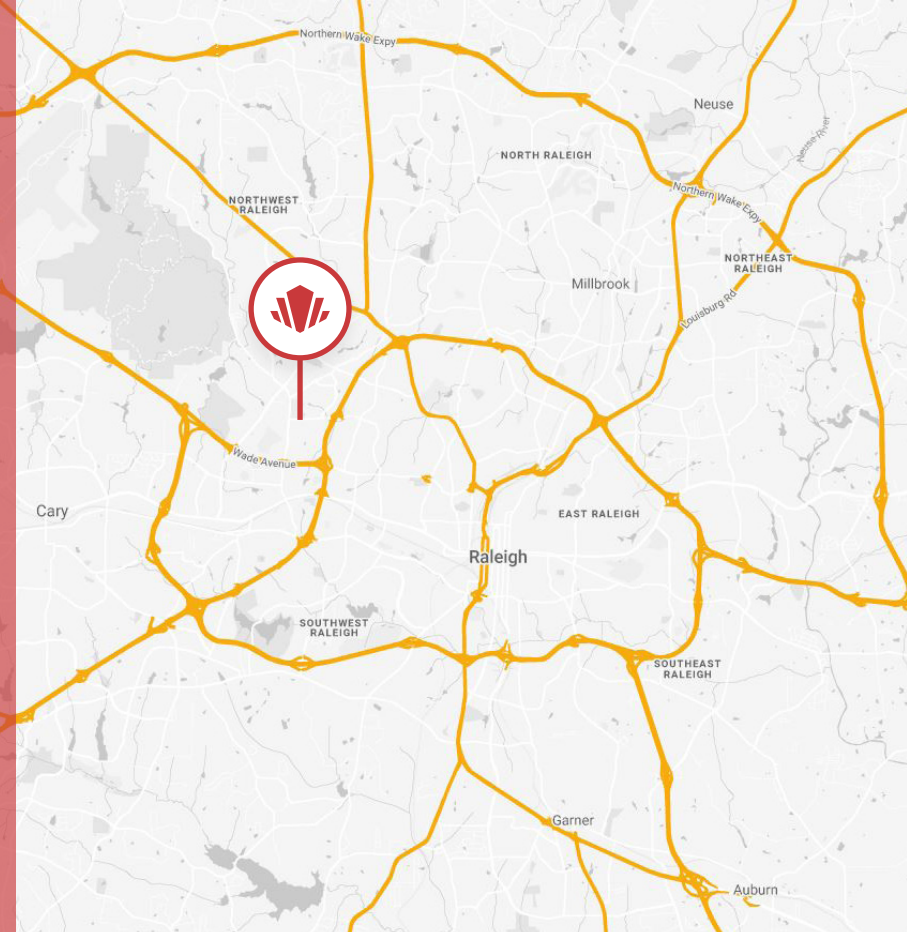
A few nearby public transportation options.



58

VERY BIKEABLE

Biking is convenient for some trips.



**CAPITAL
ASSOCIATES.**

TRIPP BRADSHAW

919.749.0004 (c)

919.233.9901 (o)

tbradshaw@capitalassociates.com



POINTS OF INTEREST

DINING

- Chick-fil-A
- McDonalds
- Starbucks
- Buffalo Brothers Pizza & Wings
- The Oak

- Guasaca Arepa & Salsa Grill
- City Barbeque
- Village Deli & Grill
- Chubby's Tacos
- Randy's Pizza

CONVENIENCE

- Food Lion
- UNC Health Rex
- Walgreens

LEISURE

- North Carolina Museum of Art



A LOBBY THAT CATCHES THE EYE

Elegantly filled with granite and a stunning grand piano.

