

FOR LEASE

Kokomo Medical Office Park

2302-2350 S. Dixon Road, Kokomo, IN 46902



PROPERTY HIGHLIGHTS



- For Lease:
 - Medical Spec Suite: 3,095 SF - includes \$3/SF moving allowance
 - Suite 2312-225: 5,271 SF
 - Suite 2312-240: 5,153 SF
 - Suite 2330-315: 750 SF
 - Max. Contiguous: 13,519 SF
- Easy commute from Community Howard Regional Hospital and Ascension St. Vincent Hospital
- Professionally managed, multi-tenant medical office park
- Convenient, to-your-door parking



Kokomo Medical Office Park
2302-2350 S. Dixon Road
Kokomo, IN 46902



CONTACT

Charles Yeo, CCIM, CPM
SVP, Brokerage
317.288.9006
cyeo@cciin.com

Cornerstone Companies, Inc.
8902 N Meridian Street, Suite 205
Indianapolis, IN, 46260

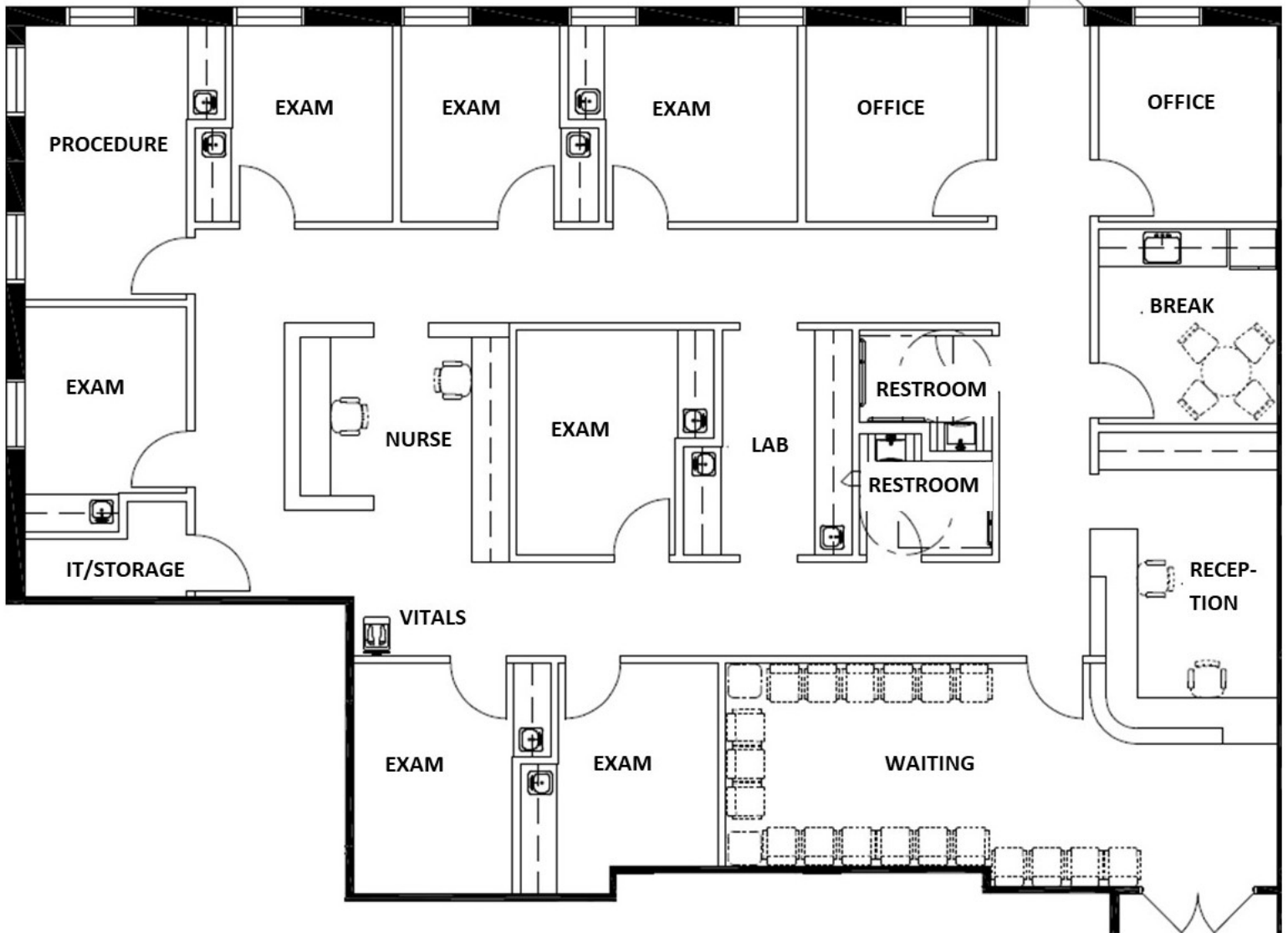
MEDICAL SPEC SUITE COMING SOON!

FLOOR PLAN

Medical Spec Suite

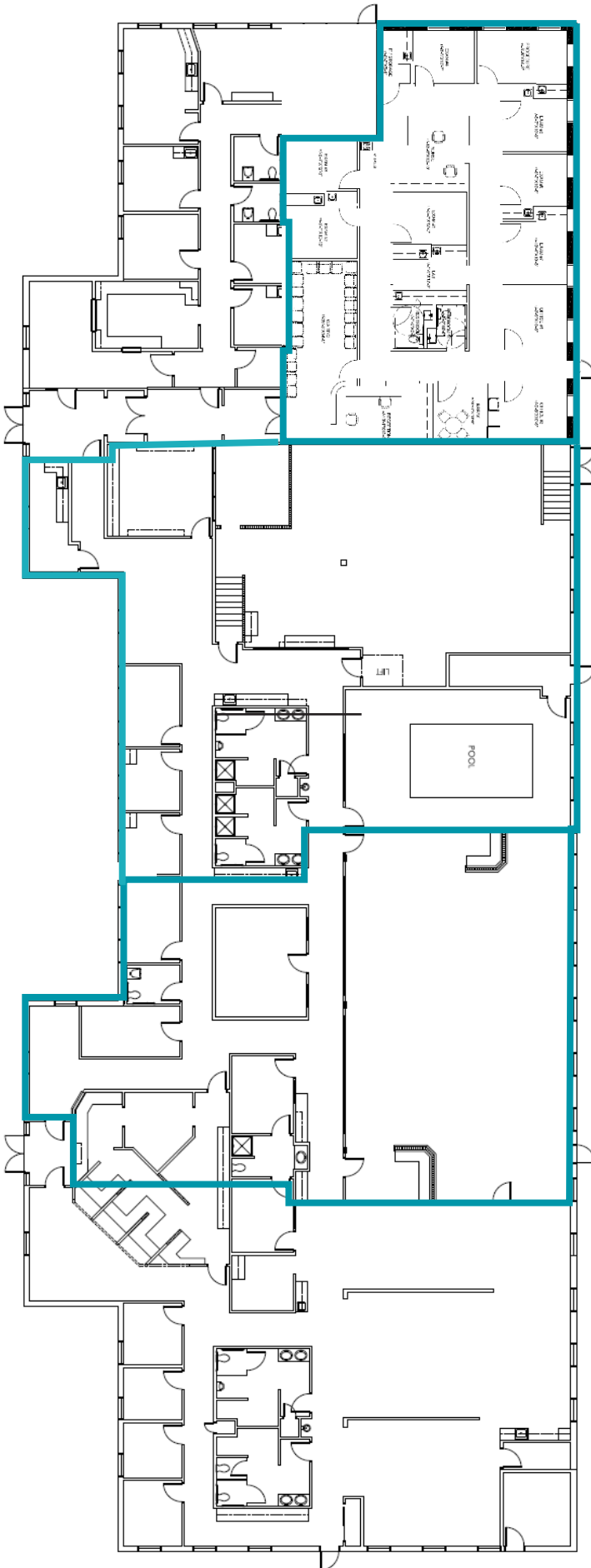
3,095 SF

\$3/SF Moving Allowance Included



FLOOR PLAN

MAX. CONTIGUOUS:
13,519 SF

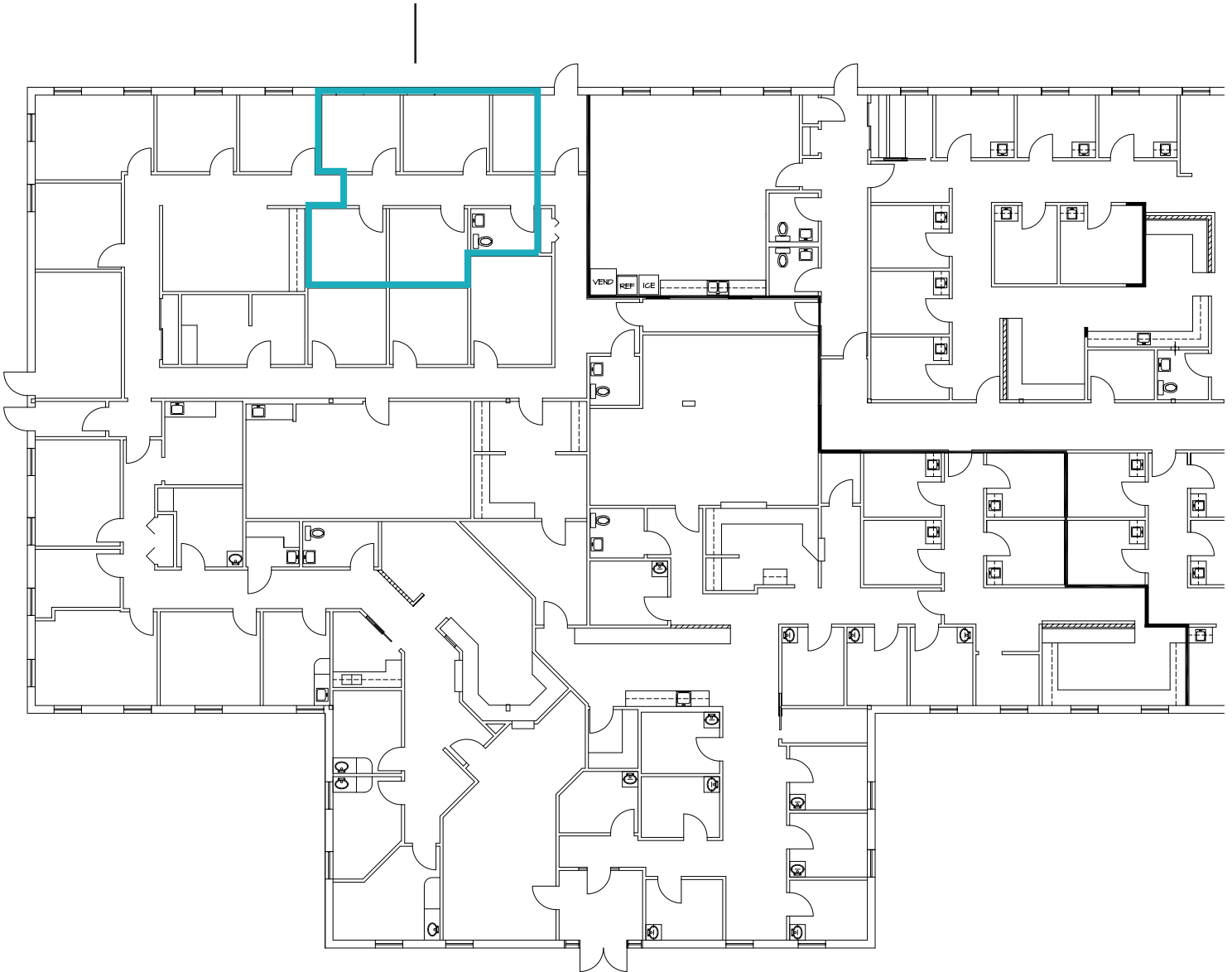


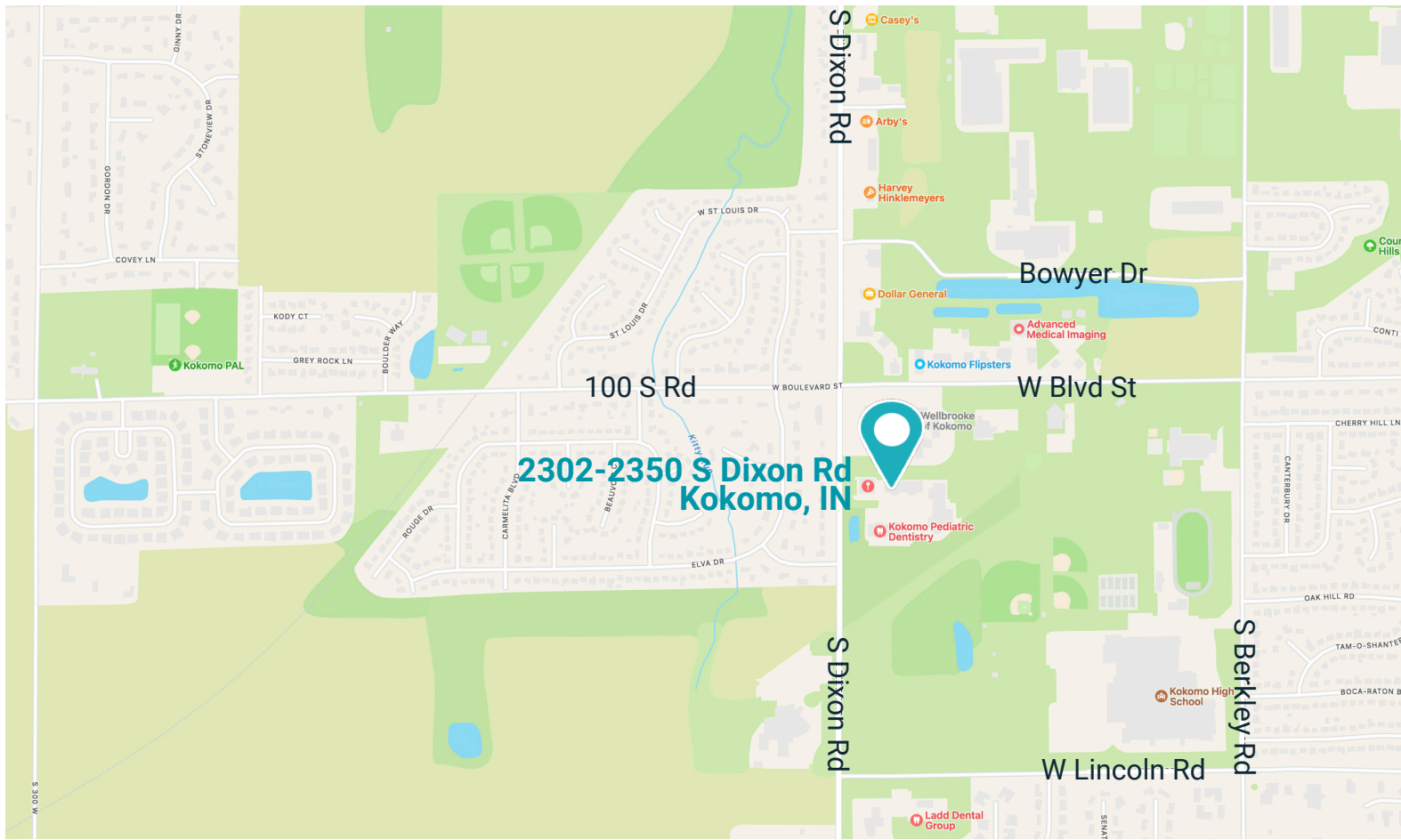
Medical Spec Suite
3,095 SF

Suite 2312-225
5,271 SF

Suite 2312-240
5,153 SF

Suite 2330-315:
750 SF







TRAFFIC COUNT

14,147 vehicles per day on South Dixon Road

DEMOGRAPHICS (5 - mile radius)

 72,288
Population

 40.4
Median Age

 30,564
Households

 \$70,839
Average Household Income



CONTACT

Charles Yeo, CCIM, CPM
SVP, Brokerage
317.288.9006
cyeo@cciin.com



© 2024 Cornerstone Companies, Inc. All rights reserved. Although the information contained herein has been obtained from sources deemed reliable, Owner, Cornerstone Companies, Inc., and/or their representatives, brokers or agents make no representation or warranty as to its accuracy or completeness. Any reliance on this information is solely at your own risk.