

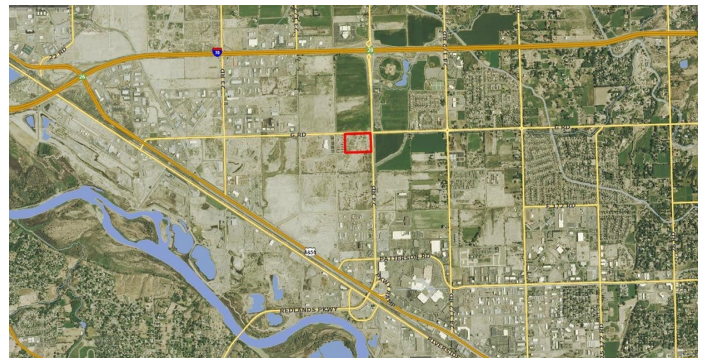


Commercial Land

PRIME PROPERTIES

2385 G Road, Grand Junction, CO 81505

FOR SALE - \$6,043,500



PROPERTY DETAILS:

Finest future retail corner in the Grand Valley at 24 and G Roads. Adjacent to Community Hospital and Medical Plaza, diagonally across from Canyon View Park. Direct I-70 access. Property located at the first corner south of the I-70 exit at 24 Road.

MLS #676282

PROPERTY LOCATION:



All information herein is from sources deemed reliable. However, the broker makes no warranties, expressed or implied, as to the accuracy of the information or suitability of this property for the investor.

FOR MORE DETAILS PLEASE CONTACT:

Dale Beede, CCIM | dbeede@cbcwest.com
Coldwell Banker Commercial, Prime Properties

Mobile: 970-250-9500 Main: 970-244-6615
131 N. 6th St. Suite 300, Grand Junction, CO 81501