

514 BRYANT STREET

FOR LEASE | STAND ALONE CREATIVE OFFICE / WAREHOUSE BUILDING

TCP
TOUCHSTONE
COMMERCIAL PARTNERS



WWW.TCPRE.COM

ZACH HAUPERT zhaupert@tcpre.com
D 415.539.1121 | C 415.812.1219

MICHAEL SANBERG msanberg@tcpre.com
D 415.539.1103 | C 415.697.6088

514 BRYANT STREET

PROPERTY SUMMARY

ADDRESS

514 Bryant Street, San Francisco, CA 94107

AVAILABLE SPACE

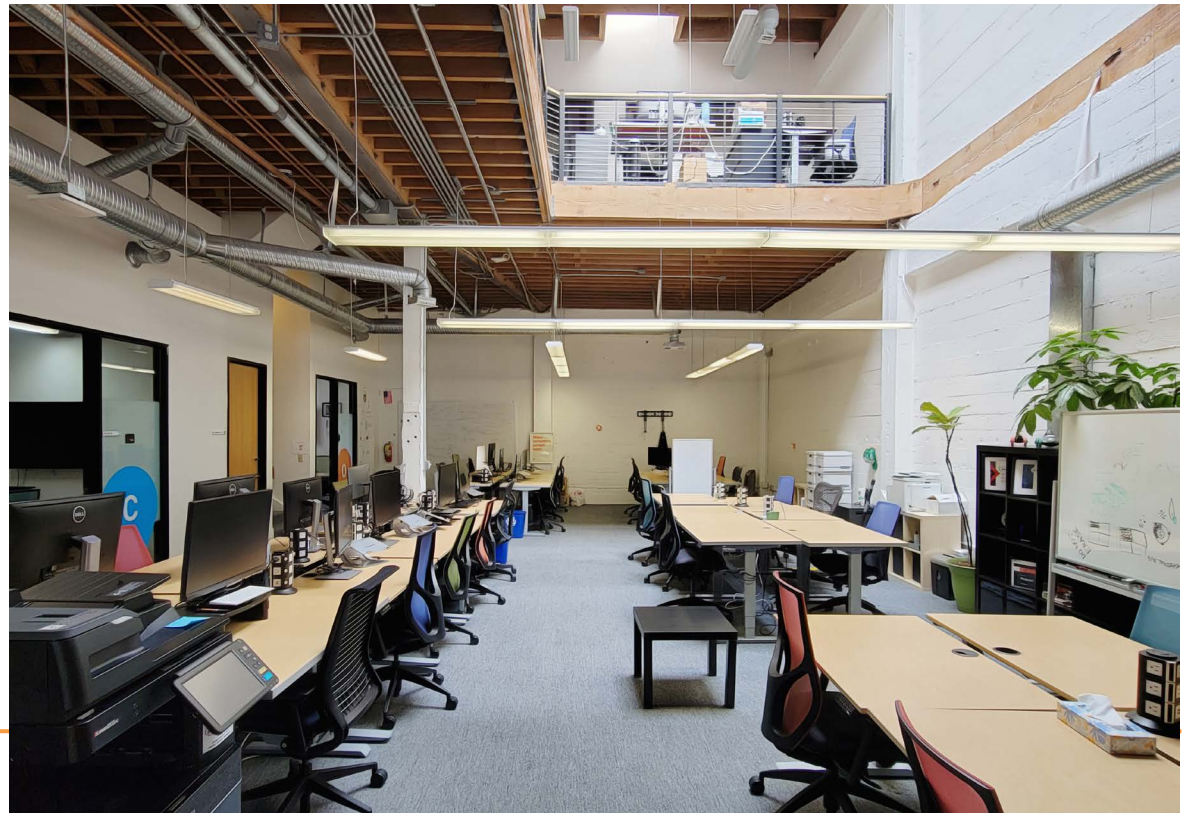
+/- 6,100 Square Feet

RENTAL RATE

\$38 / Square Foot / Year, Industrial Gross

AVAILABLE

Immediately



BUILDING ATTRIBUTES

- + One (1) Drive-In Roll Up Door
- + Nine (9) Private Offices
- + Two (2) Conference Rooms
- + Four (4) Restrooms
- + Polished Concrete Floors
- + High Ceilings w/ Skylight
- + New Open Kitchen
- + Close Proximity to South Park & CalTrain

514 BRYANT STREET

LOCATION OVERVIEW

Desirable South of Market location, walkable to nearby amenities and to surrounding neighborhoods.



09 MIN to 3rd St. Caltrain
10 MIN to 2nd & King Muni
17 MIN to Powell St BART



05 MIN to Union Square
07 MIN to Financial District
08 MIN to Mission Bay



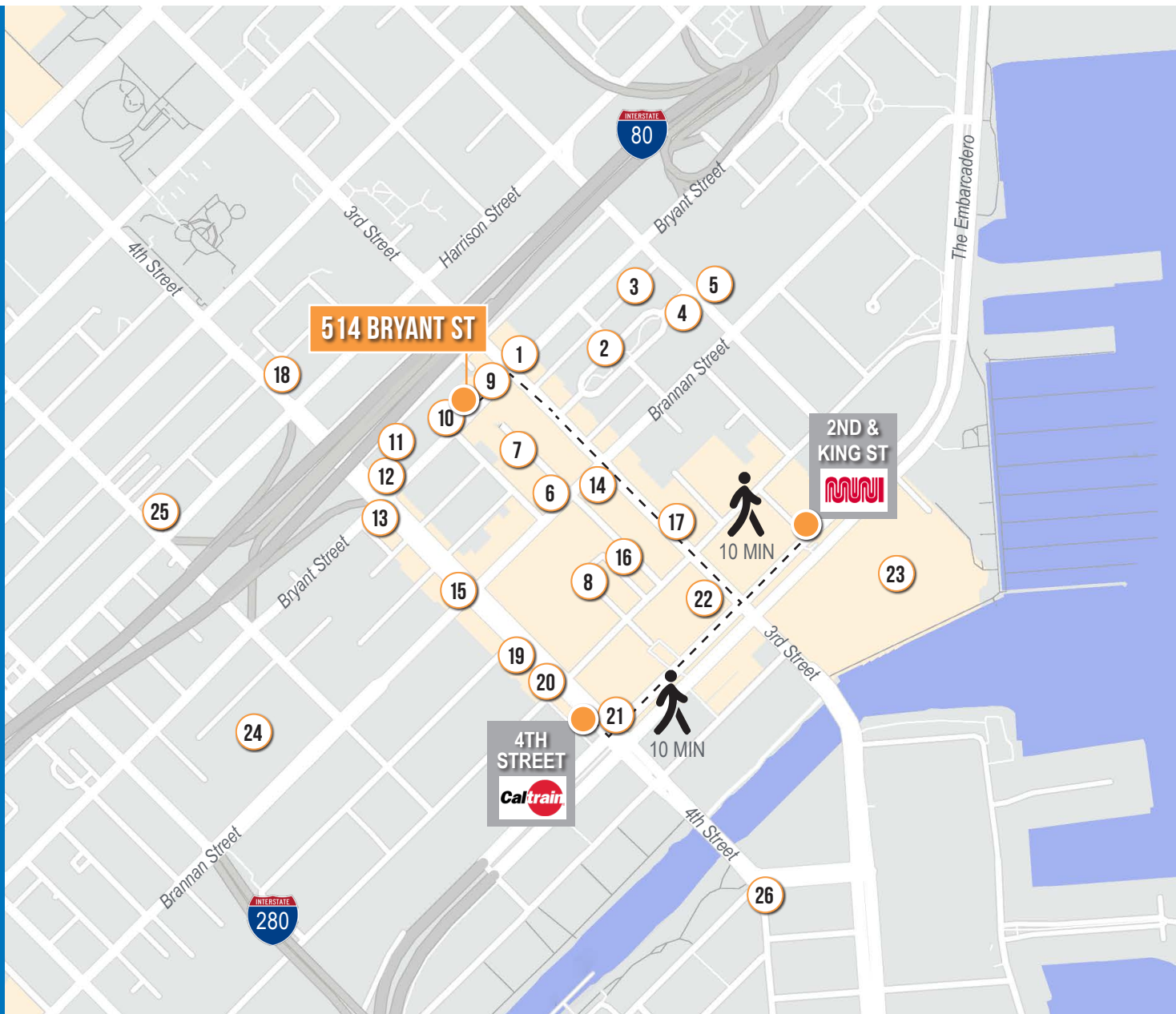
02 MIN to 80 On-Ramp
04 MIN to 280 On-Ramp
06 MIN to 101 On-Ramp



514 BRYANT STREET

NEARBY AMENITIES

- 1.....Flour & Branch
- 2.....Caffe Centro
- 3.....Blue Bottle Coffee
- 4.....Movida
- 5.....21st Amendment
- 6.....Brickhouse
- 7.....Wabi Sabi
- 8.....ROOFTOP 25
- 9.....Hakashi
- 10.....Black Hammer Brewing
- 11.....Shell Gas Station
- 12.....Thriller Social Club
- 13.....The Hotel Utah Saloon
- 14.....Local Tap
- 15.....Marlowe
- 16.....Little Skillet
- 17.....Alchemist Bar & Lounge
- 18.....Whole Foods Market
- 19.....The UPS Store
- 20.....Walgreens
- 21.....Safeway
- 22.....Lucky Strike San Francisco
- 23.....Oracle Park
- 24.....San Francisco Flower Mart
- 25.....All Star Donuts
- 26.....Gus's Community Market



514 BRYANT STREET



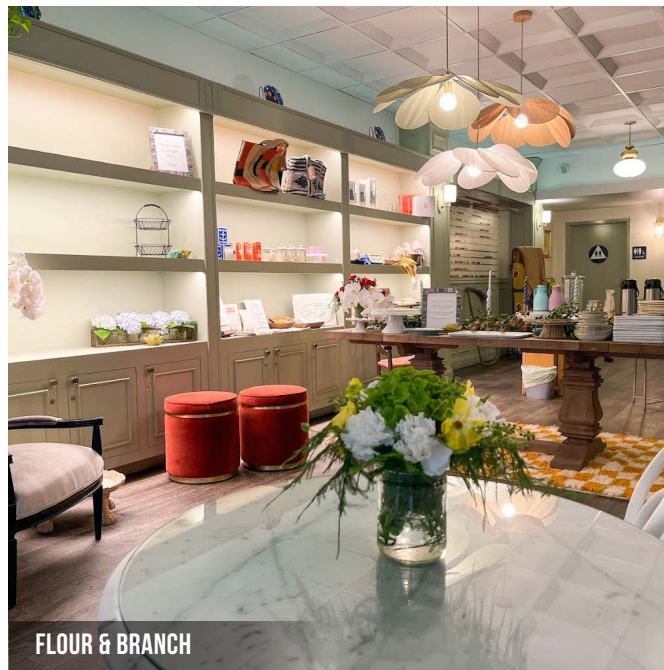
MARLOWE



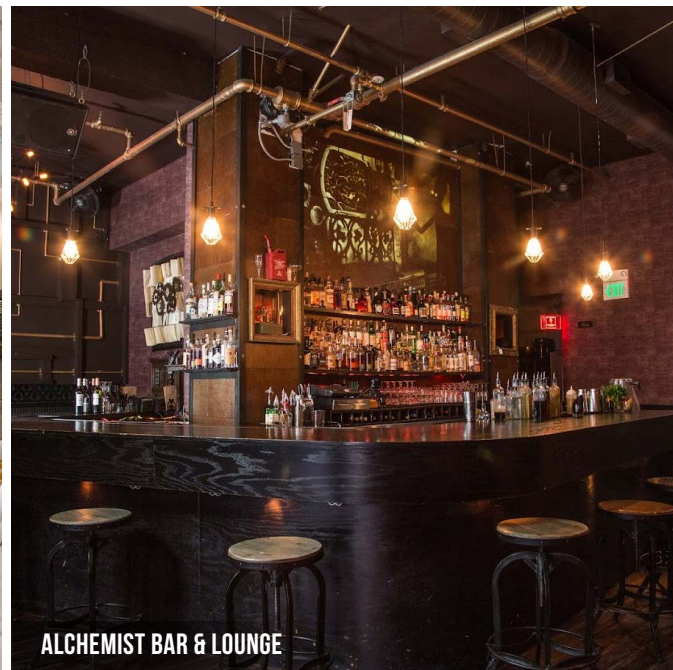
ROOFTOP 25



LITTLE SKILLET



FLOUR & BRANCH



ALCHEMIST BAR & LOUNGE

514 BRYANT STREET



Corp. Lic. 01112906
www.tcpre.com

ZACH HAUPERT

D 415.539.1121 C 415.812.1219
zhaupert@tcpre.com DRE # 01822907

MICHAEL SANBERG

D 415.539.1103 C 415.697.6088
msanberg@tcpre.com DRE # 01930041

This document has been prepared by Touchstone Commercial Partners for advertising and general information only. Touchstone Commercial Partners makes no guarantees, representations or warranties of any kind, expressed or implied, regarding the information including, but not limited to, warranties of content, accuracy and reliability. Any interested party should undertake their own inquiries as to the accuracy of the information. Touchstone Commercial Partners excludes unequivocally all inferred or implied terms, conditions and warranties arising out of this document and excludes all liability for loss and damages arising there from. This publication is the copyrighted property of Touchstone Commercial Partners and/or its licensor(s). ©2025. All rights reserved.