



# SOUTH PARK GROUP

[www.southparkgroup.com](http://www.southparkgroup.com)



## FOR LEASE

### SECOND FLOOR CREATIVE OFFICE

7257 Beverly Blvd., Suite 224  
Los Angeles, California 90036

Creative second floor office space in a remodeled courtyard building. Hardwood floors throughout with an extensively furnished roof top for dining and outdoor meetings. Centrally located on Beverly Blvd. between La Brea and Martel Avenues.

#### **JACK RAVAN**

Tel. 323.782.1270

E. [jackravan@southparkgroup.com](mailto:jackravan@southparkgroup.com)

No. 00890189

#### **AVAILABLE SPACE**

**Size:** Approximately 2,043 rentable sqft

**Rate:** \$3.65 per sqft, Modified Gross

**Parking:** Subterranean garage at \$150 per space

SOUTH PARK GROUP | 8322 Beverly Blvd., Suite 301 | Los Angeles, CA 90048

This information has been furnished by sources that we deem reliable, but for which we assume no liability. The information contained herein is given, in confidence, with the understanding that all negotiations pertaining to this property be handled through the submitting office. All measurements are approximate.

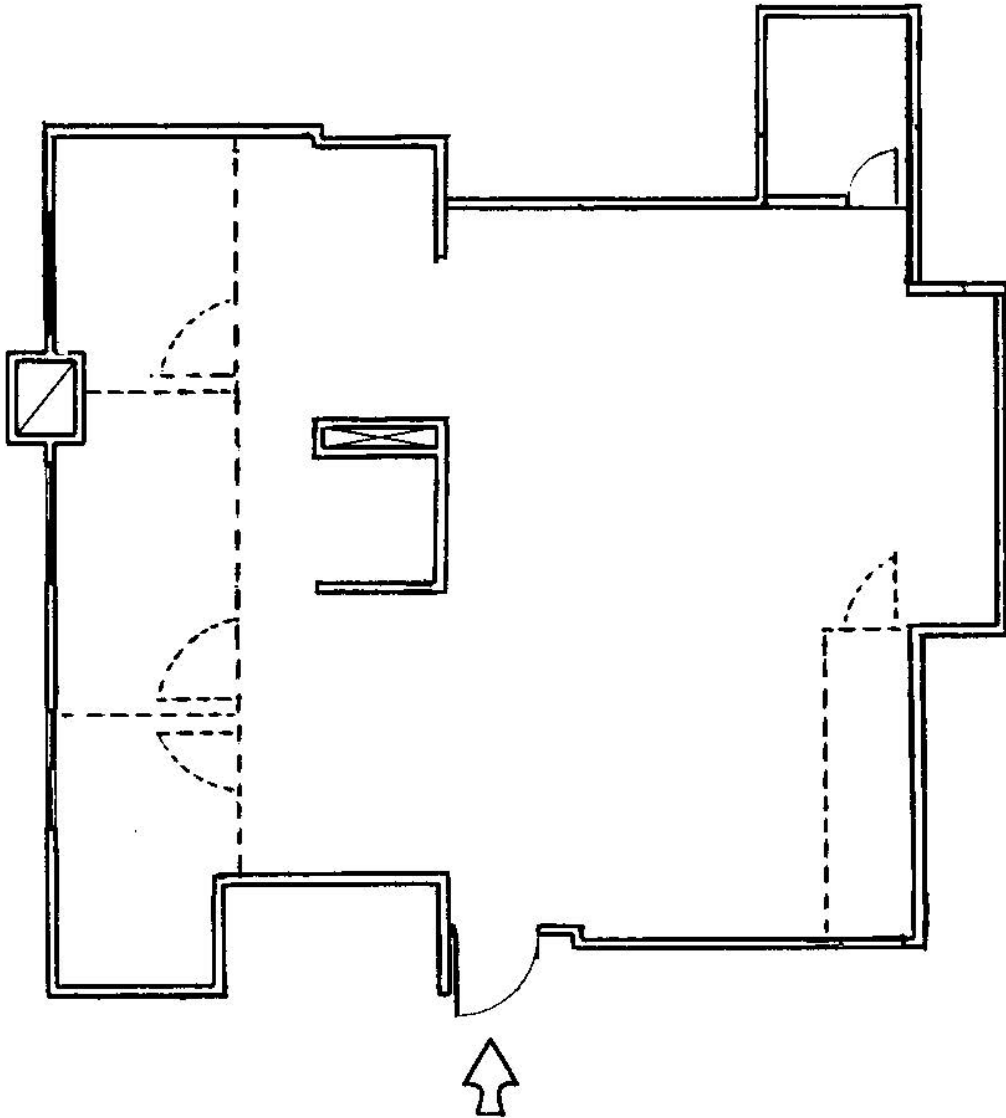


# SOUTH PARK GROUP

[www.southparkgroup.com](http://www.southparkgroup.com)

## FLOOR PLAN

7257 Beverly Blvd., Suite 224, Los Angeles, California 90036



Not Drawn to Scale

SOUTH PARK GROUP | 8322 Beverly Blvd., Suite 301 | Los Angeles, CA 90048

This information has been furnished by sources that we deem reliable, but for which we assume no liability. The information contained herein is given, in confidence, with the understanding that all negotiations pertaining to this property be handled through the submitting office. All measurements are approximate.

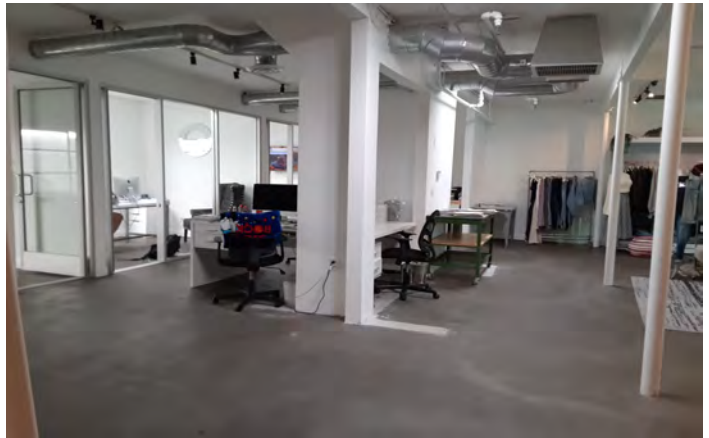


# SOUTH PARK GROUP

[www.southparkgroup.com](http://www.southparkgroup.com)

## INTERIOR

7257 Beverly Blvd., Suite 224, Los Angeles, California 90036



**SOUTH PARK GROUP | 8322 Beverly Blvd., Suite 301 | Los Angeles, CA 90048**

This information has been furnished by sources that we deem reliable, but for which we assume no liability. The information contained herein is given, in confidence, with the understanding that all negotiations pertaining to this property be handled through the submitting office. All measurements are approximate.





# SOUTH PARK GROUP

[www.southparkgroup.com](http://www.southparkgroup.com)

## ROOFTOP

7257 Beverly Blvd., Suite 224, Los Angeles, California 90036



**SOUTH PARK GROUP | 8322 Beverly Blvd., Suite 301 | Los Angeles, CA 90048**

This information has been furnished by sources that we deem reliable, but for which we assume no liability. The information contained herein is given, in confidence, with the understanding that all negotiations pertaining to this property be handled through the submitting office. All measurements are approximate.