

**PRIME COMMERCIAL LEASE SPACE AVAILABLE!**



# TUSCANY SQUARE PLAZA

2603 W Pleasant Grove Rd, Rogers, AR 72756



**RETAIL OR OFFICE SPACES AVAILABLE:**

Last Remaining Vacancy: Suite 107 - 1,650 sqft.

Type of Lease: NNN - \$4.95  
\$187/mo Water/Trash Fee

VPD: 25,000

**NOTABLE OTHER TENANTS:**

- Starbucks
- Chick-Fil-A
- Cox
- StateFarm
- Subway
- T-Mobile
- SERC Physical Therapy

**OFFERING SUMMARY**

Lease Rate:	\$21.00 SF/yr (NNN)
Available SF:	1,650 SF
Lot Size:	6.88 Acres
Building Size:	42,501 SF

DEMOGRAPHICS	1 MILE	2 MILES	3 MILES
Total Households	1,315	6,140	14,588
Total Population	3,644	16,388	39,916
Average HH Income	\$110,359	\$103,885	\$100,914

We obtained the information above from sources we believe to be reliable. However, we have not verified its accuracy and make no guarantee, warranty or representation about it. It is submitted subject to the possibility of errors, omissions, change of price, rental or other conditions, prior sale, lease or financing, or withdrawal without notice. We include projections, opinions, assumptions or estimates for example only, and they may not represent current or future performance of the property. You and your tax and legal advisors should conduct your own investigation of the property and transaction.

**TIMOTHY SALMONSEN**  
Executive Broker  
O: 479.231.1355  
C: 479.330.1250  
sqrleadmanager@gmail.com  
AR #EB00066512

**KW COMMERCIAL**  
201 SW 14th St.  
Suite 203  
Bentonville, AR 72712



**PRIME COMMERCIAL LEASE SPACE AVAILABLE!**



# TUSCANY SQUARE PLAZA

2603 W Pleasant Grove Rd, Rogers, AR 72756



We obtained the information above from sources we believe to be reliable. However, we have not verified its accuracy and make no guarantee, warranty or representation about it. It is submitted subject to the possibility of errors, omissions, change of price, rental or other conditions, prior sale, lease or financing, or withdrawal without notice. We include projections, opinions, assumptions or estimates for example only, and they may not represent current or future performance of the property. You and your tax and legal advisors should conduct your own investigation of the property and transaction.

**TIMOTHY SALMONSEN**  
Executive Broker  
O: 479.231.1355  
C: 479.330.1250  
sqrleadmanager@gmail.com  
AR #EB00066512

**KW COMMERCIAL**  
201 SW 14th St.  
Suite 203  
Bentonville, AR 72712

Each Office Independently Owned and Operated [salmonsengroup.com](http://salmonsengroup.com)



**RETAIL FOR PRIME COMMERCIAL LEASE SPACE AVAILABLE!**



# TUSCANY SQUARE PLAZA

2603 W Pleasant Grove Rd, Rogers, AR 72756



We obtained the information above from sources we believe to be reliable. However, we have not verified its accuracy and make no guarantee, warranty or representation about it. It is submitted subject to the possibility of errors, omissions, change of price, rental or other conditions, prior sale, lease or financing, or withdrawal without notice. We include projections, opinions, assumptions or estimates for example only, and they may not represent current or future performance of the property. You and your tax and legal advisors should conduct your own investigation of the property and transaction.

**TIMOTHY SALMONSEN**  
Executive Broker  
O: 479.231.1355  
C: 479.330.1250  
sqleadmanager@gmail.com  
AR #EB00066512

**KW COMMERCIAL**  
201 SW 14th St.  
Suite 203  
Bentonville, AR 72712

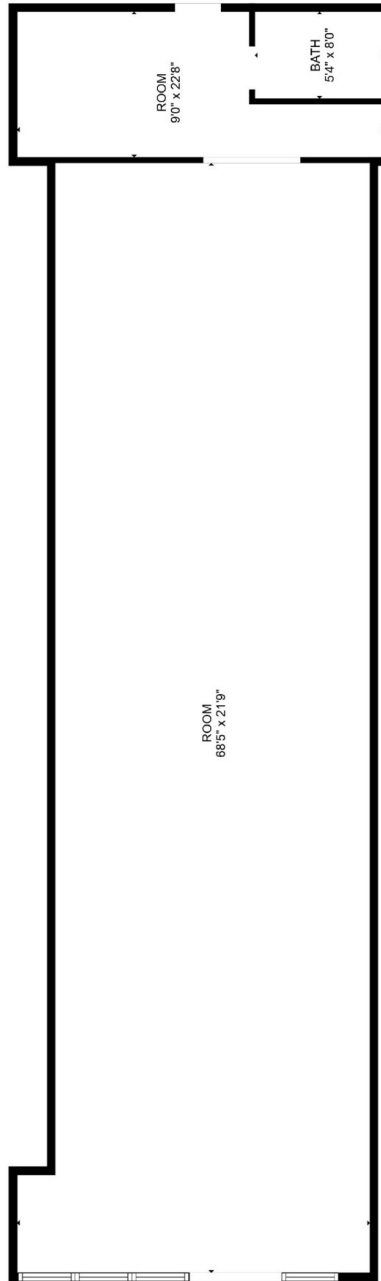
Each Office Independently Owned and Operated [salmonsengroup.com](http://salmonsengroup.com)

**PRIME COMMERCIAL LEASE SPACE AVAILABLE!**



# SUITE 107 FLOOR PLAN

2603 W Pleasant Grove Rd, Rogers, AR 72756



## Suite 107

We obtained the information above from sources we believe to be reliable. However, we have not verified its accuracy and make no guarantee, warranty or representation about it. It is submitted subject to the possibility of errors, omissions, change of price, rental or other conditions, prior sale, lease or financing, or withdrawal without notice. We include projections, opinions, assumptions or estimates for example only, and they may not represent current or future performance of the property. You and your tax and legal advisors should conduct your own investigation of the property and transaction.

**TIMOTHY SALMONSEN**  
Executive Broker  
O: 479.231.1355  
C: 479.330.1250  
sgrleadmanager@gmail.com  
AR #EB00066512

**KW COMMERCIAL**  
201 SW 14th St.  
Suite 203  
Bentonville, AR 72712

Each Office Independently Owned and Operated [salmonsengroup.com](http://salmonsengroup.com)

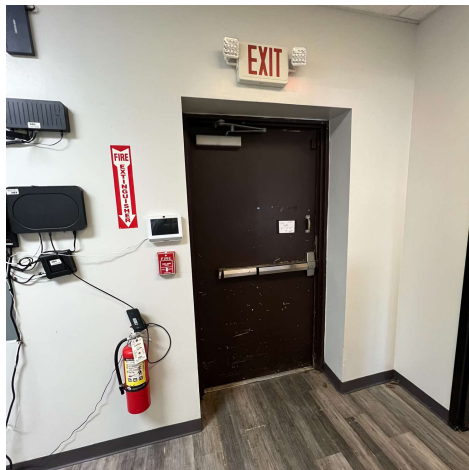
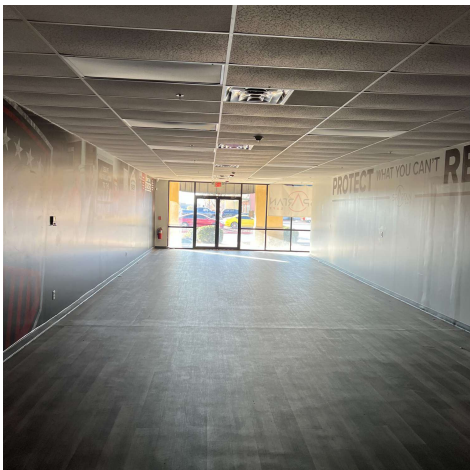
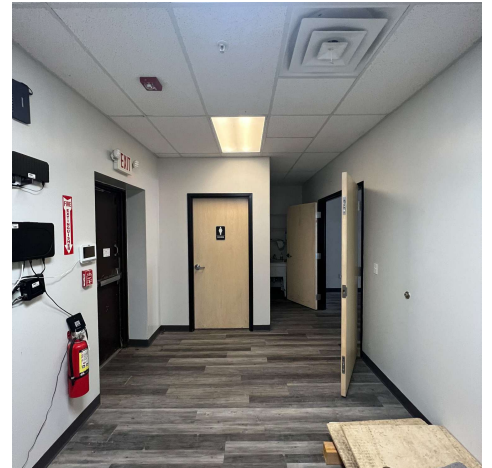
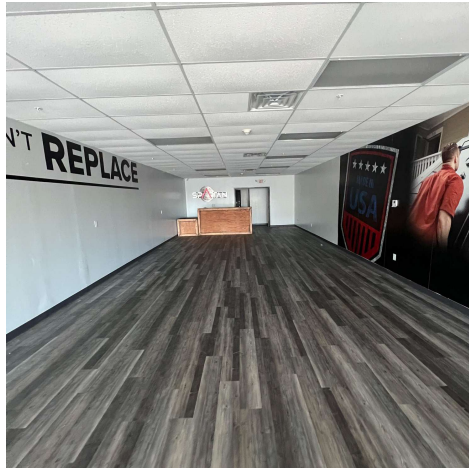
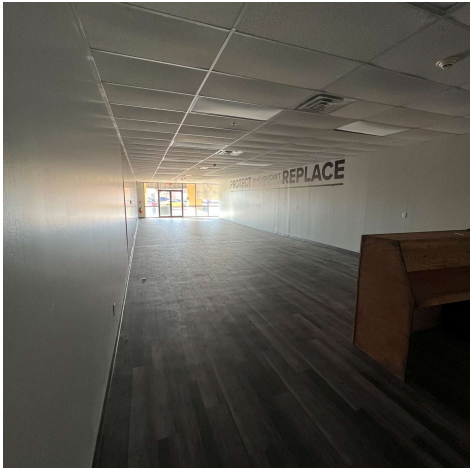
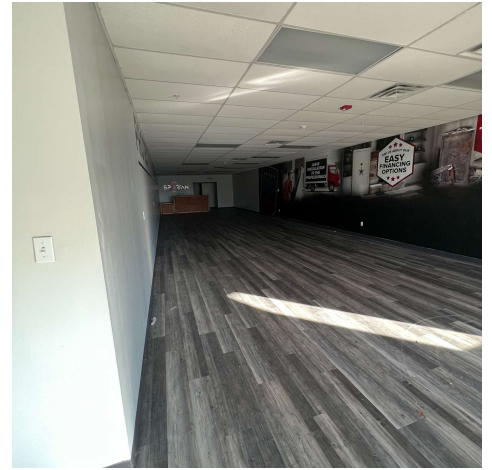


**PRIME COMMERCIAL LEASE SPACE AVAILABLE!**



# SUITE 107 PHOTOS

2603 W Pleasant Grove Rd, Rogers, AR 72756



We obtained the information above from sources we believe to be reliable. However, we have not verified its accuracy and make no guarantee, warranty or representation about it. It is submitted subject to the possibility of errors, omissions, change of price, rental or other conditions, prior sale, lease or financing, or withdrawal without notice. We include projections, opinions, assumptions or estimates for example only, and they may not represent current or future performance of the property. You and your tax and legal advisors should conduct your own investigation of the property and transaction.

**TIMOTHY SALMONSEN**  
Executive Broker  
O: 479.231.1355  
C: 479.330.1250  
sqrleadmanager@gmail.com  
AR #EB00066512

**KW COMMERCIAL**  
201 SW 14th St.  
Suite 203  
Bentonville, AR 72712

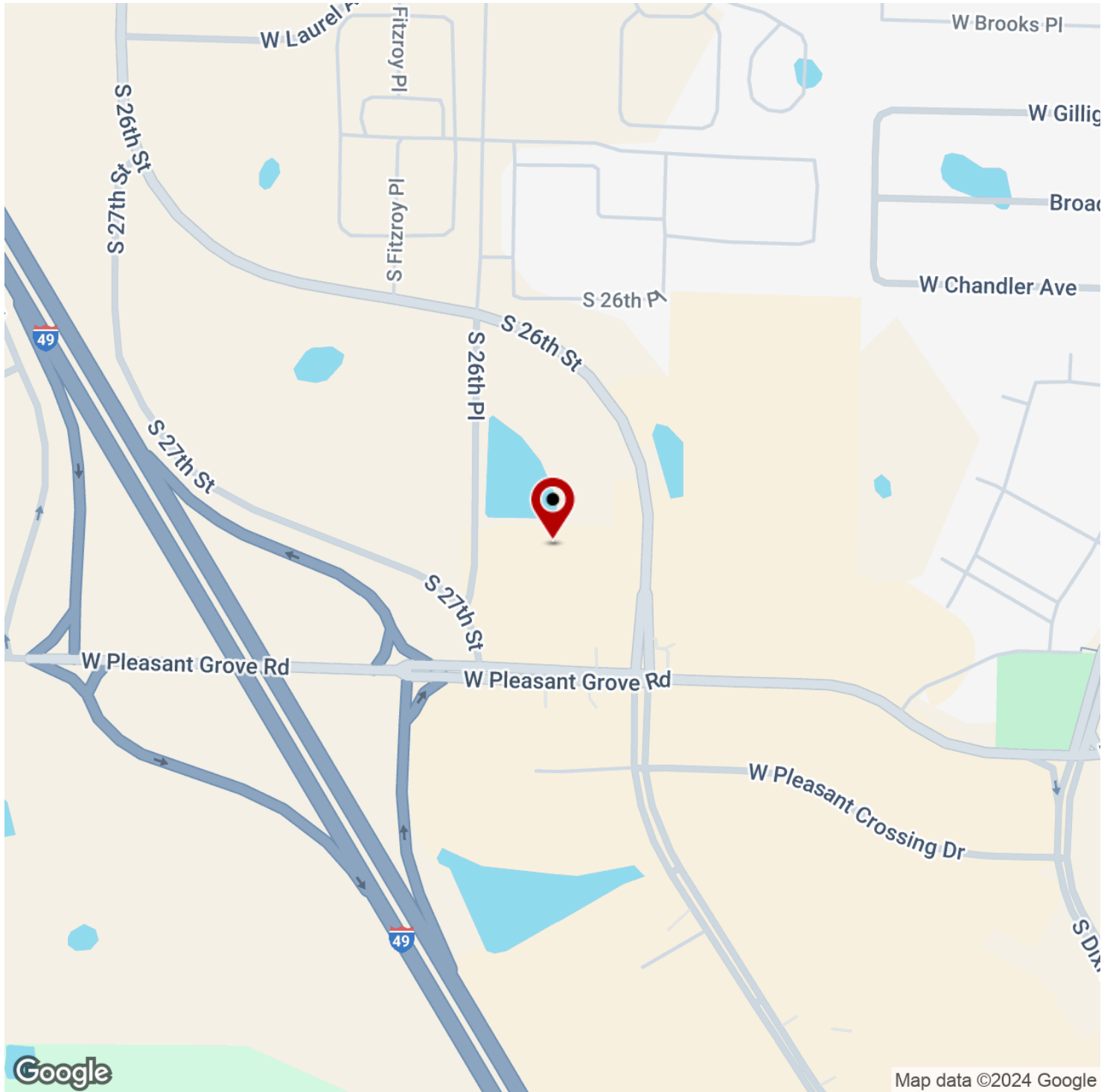
Each Office Independently Owned and Operated [salmonsengroup.com](http://salmonsengroup.com)

**PRIME COMMERCIAL LEASE SPACE AVAILABLE!**



# TUSCANY SQUARE PLAZA

2603 W Pleasant Grove Rd, Rogers, AR 72756



We obtained the information above from sources we believe to be reliable. However, we have not verified its accuracy and make no guarantee, warranty or representation about it. It is submitted subject to the possibility of errors, omissions, change of price, rental or other conditions, prior sale, lease or financing, or withdrawal without notice. We include projections, opinions, assumptions or estimates for example only, and they may not represent current or future performance of the property. You and your tax and legal advisors should conduct your own investigation of the property and transaction.

**TIMOTHY SALMONSEN**  
Executive Broker  
O: 479.231.1355  
C: 479.330.1250  
sgrleadmanager@gmail.com  
AR #EB00066512

**KW COMMERCIAL**  
201 SW 14th St.  
Suite 203  
Bentonville, AR 72712

Each Office Independently Owned and Operated [salmonsengroup.com](http://salmonsengroup.com)

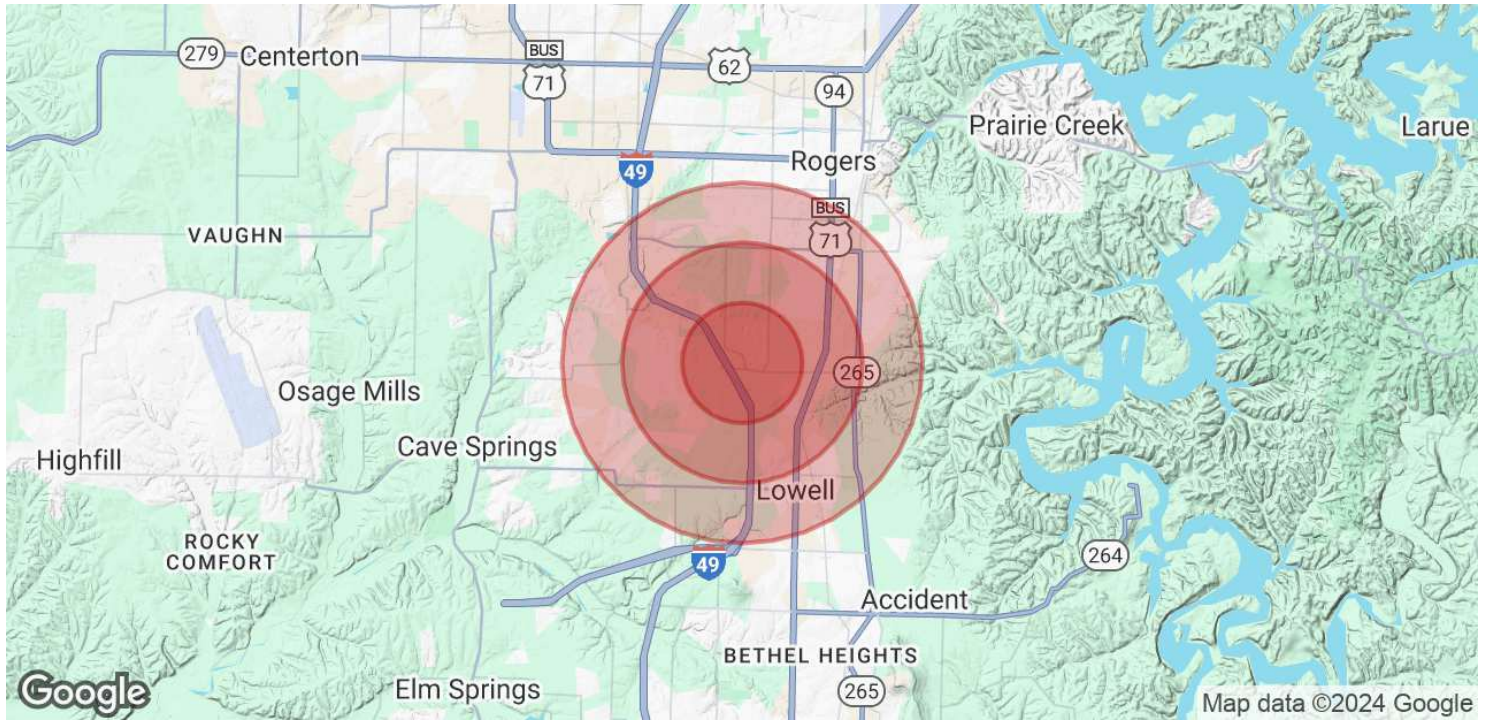


**PRIME COMMERCIAL LEASE SPACE AVAILABLE!**



# TUSCANY SQUARE PLAZA

2603 W Pleasant Grove Rd, Rogers, AR 72756



<b>POPULATION</b>	<b>1 MILE</b>	<b>2 MILES</b>	<b>3 MILES</b>
Total Population	3,644	16,388	39,916
Average Age	33.8	34.1	33.5
Average Age (Male)	33.6	33.6	33.6
Average Age (Female)	33.9	34.9	34.4

<b>HOUSEHOLDS &amp; INCOME</b>	<b>1 MILE</b>	<b>2 MILES</b>	<b>3 MILES</b>
Total Households	1,315	6,140	14,588
# of Persons per HH	2.8	2.7	2.7
Average HH Income	\$110,359	\$103,885	\$100,914
Average House Value	\$242,385	\$230,603	\$226,522

\* Demographic data derived from 2020 ACS - US Census

We obtained the information above from sources we believe to be reliable. However, we have not verified its accuracy and make no guarantee, warranty or representation about it. It is submitted subject to the possibility of errors, omissions, change of price, rental or other conditions, prior sale, lease or financing, or withdrawal without notice. We include projections, opinions, assumptions or estimates for example only, and they may not represent current or future performance of the property. You and your tax and legal advisors should conduct your own investigation of the property and transaction.

**TIMOTHY SALMONSEN**  
 Executive Broker  
 O: 479.231.1355  
 C: 479.330.1250  
 sgrleadmanager@gmail.com  
 AR #EB00066512

**KW COMMERCIAL**  
 201 SW 14th St.  
 Suite 203  
 Bentonville, AR 72712

Each Office Independently Owned and Operated [salmonsengroup.com](http://salmonsengroup.com)