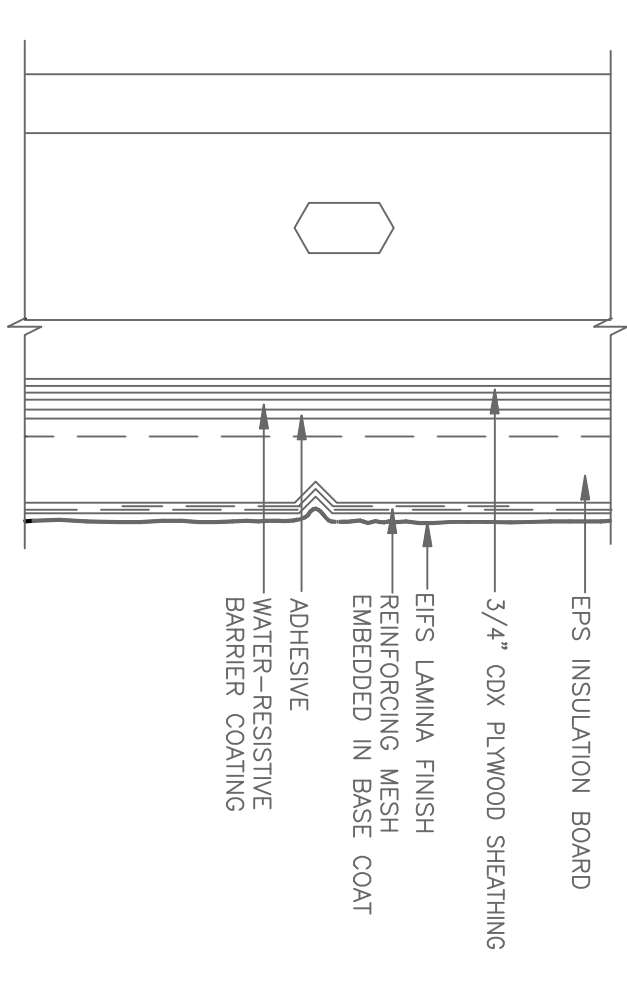
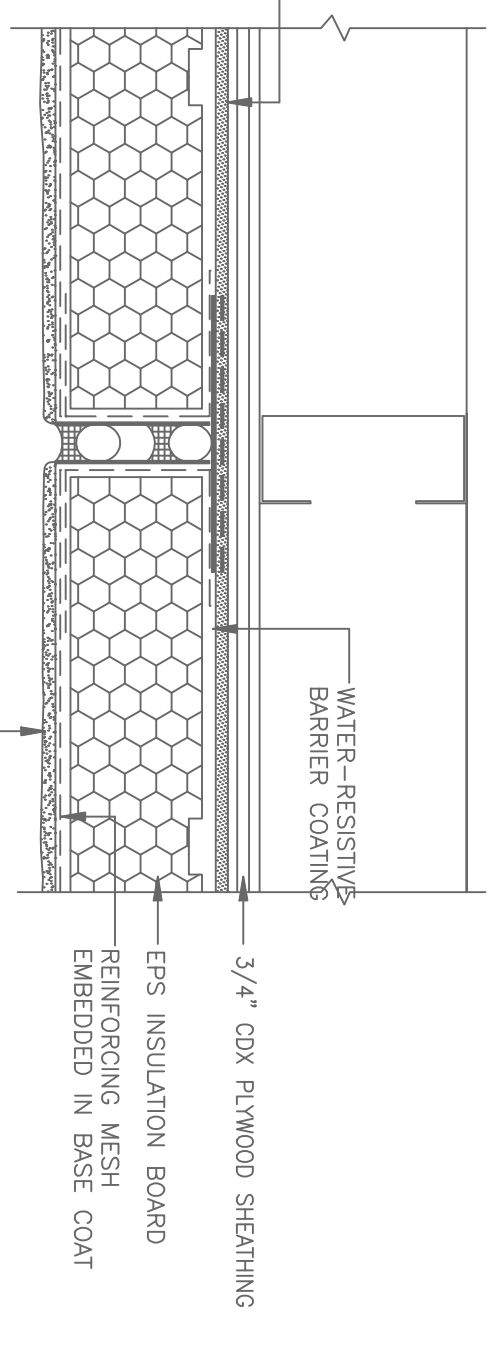


Frank A. Lombardo Architect
R.A. NY 15424

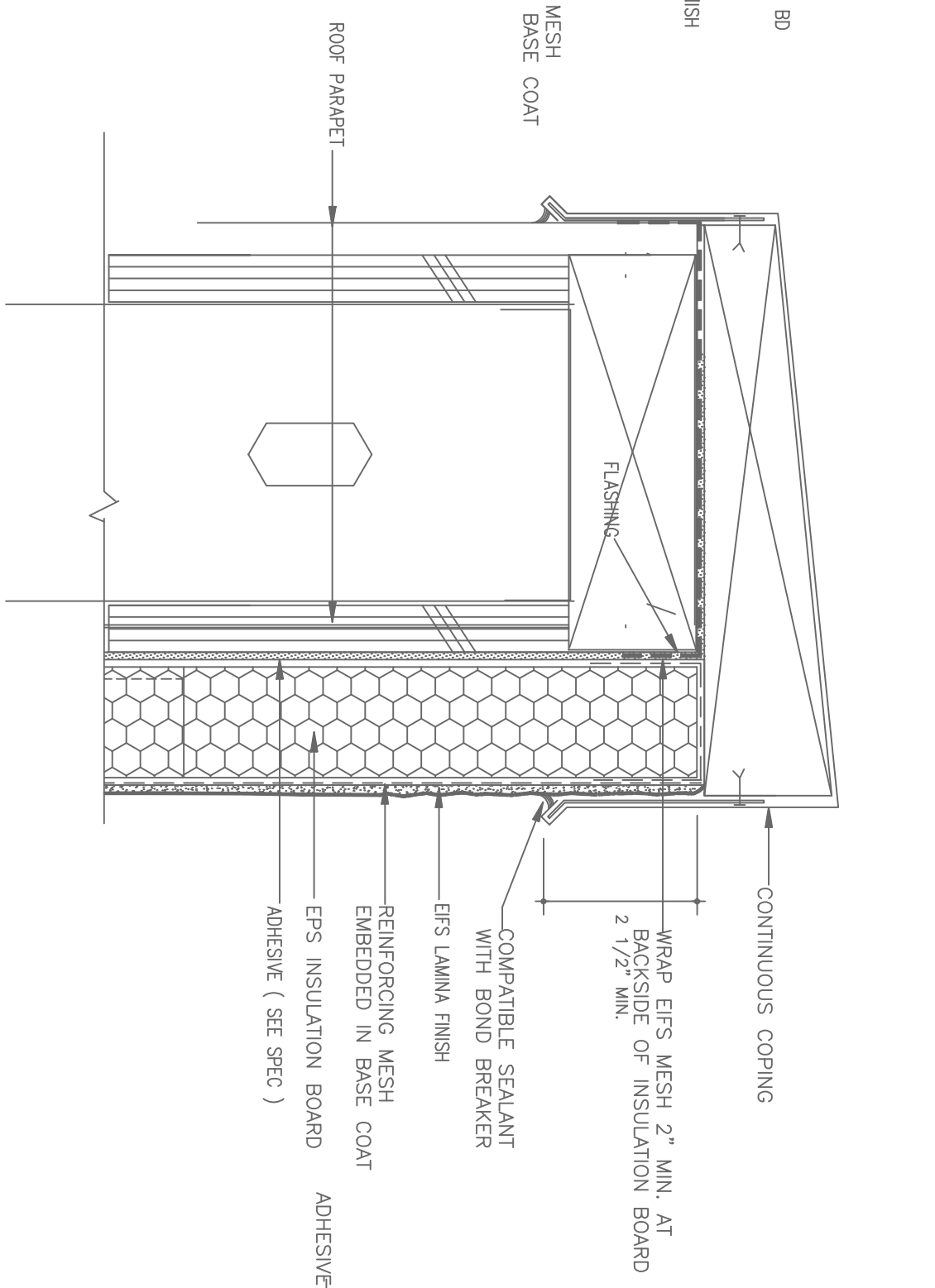
SUBMISSION LOG	
NO.	DATE / DESCRIPTION
1	1/17/24 CLIENT COMMENTS
AGENCY FILE NO.	
BLDG. DEPT.	



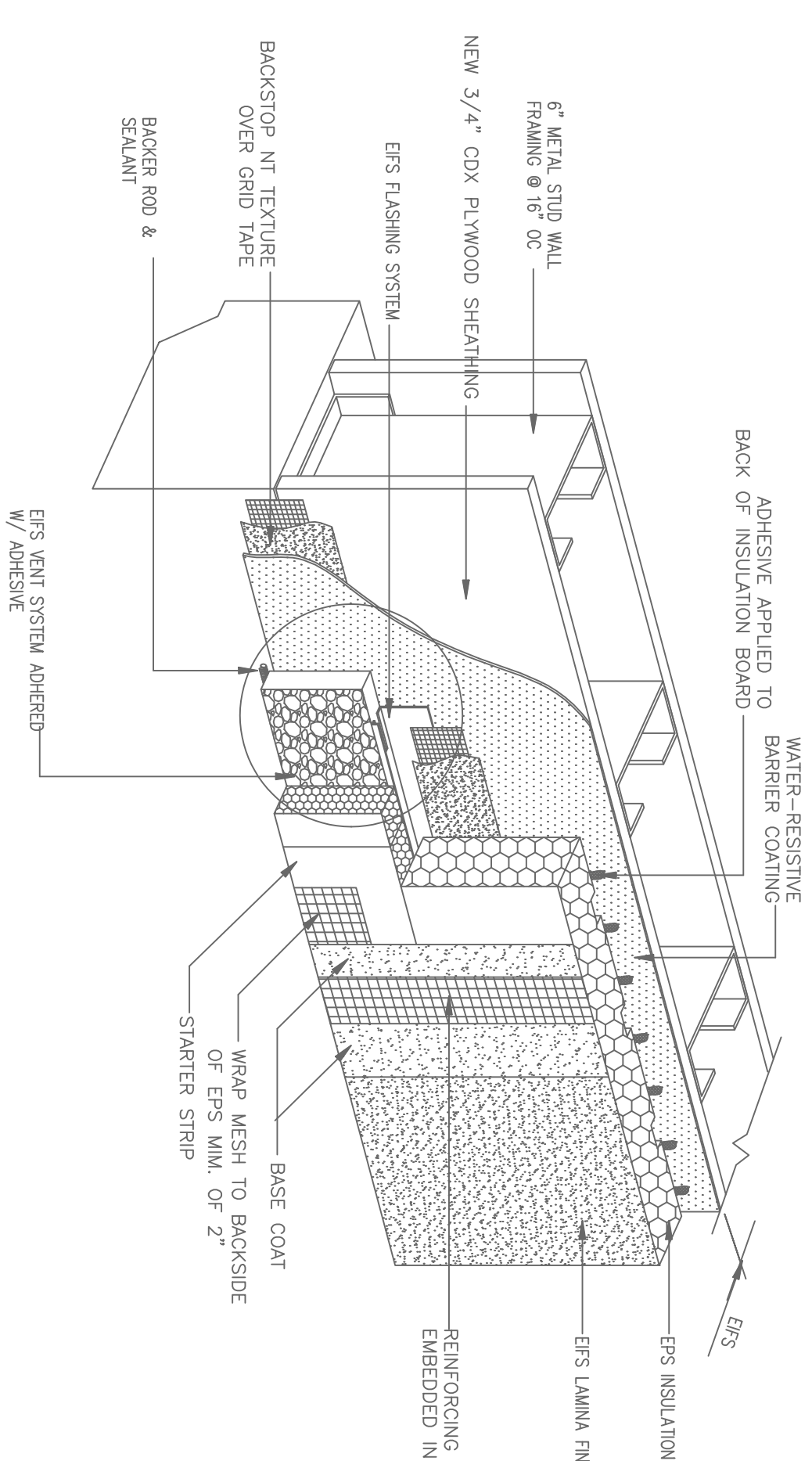
CONTROL JOINTS
DETAIL ALSO APPLIES TO EPS OVER CONCRETE BLOCK



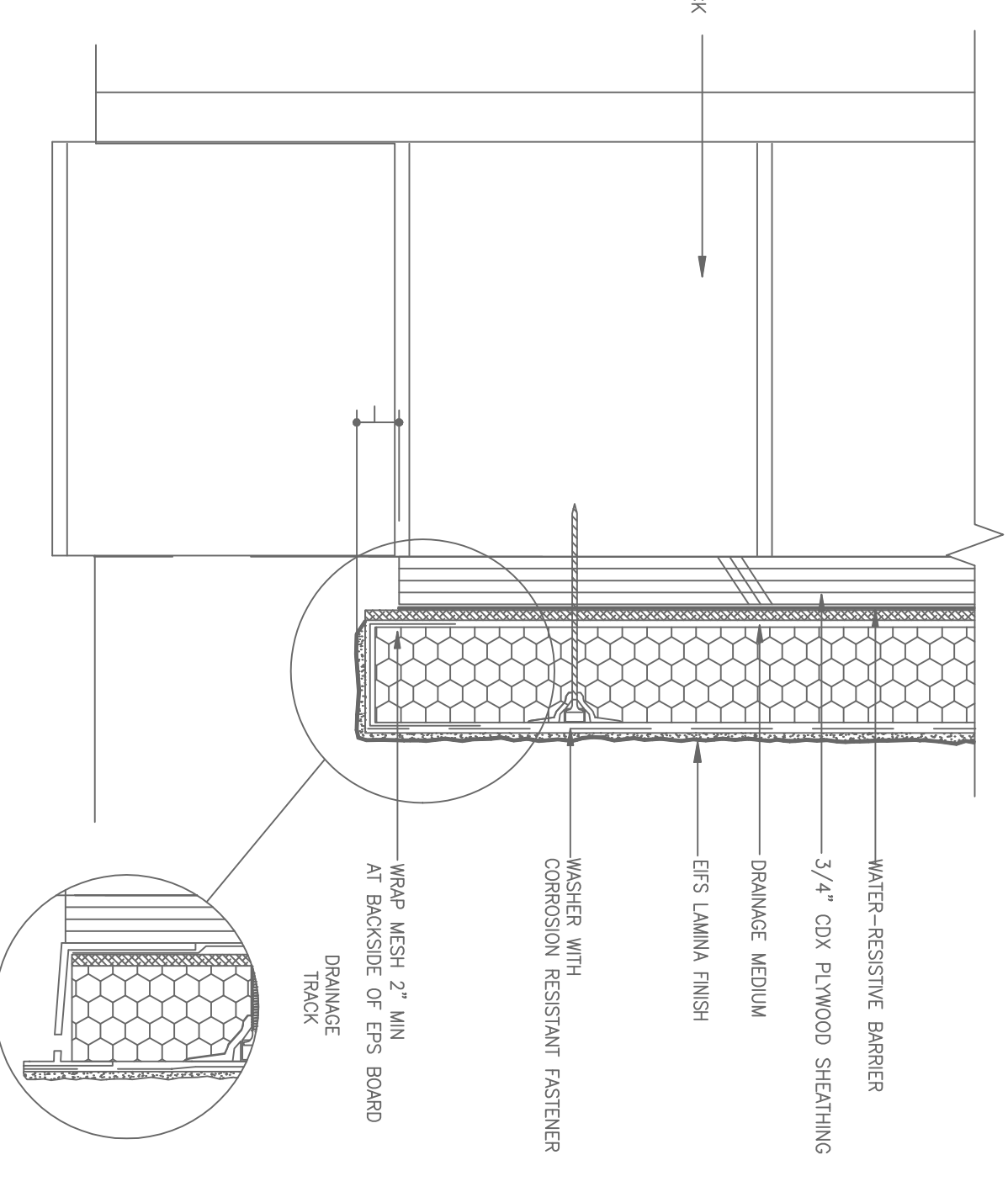
VERTICAL EXPANSION JOINT
DETAIL ALSO APPLIES TO EPS OVER CONCRETE BLOCK



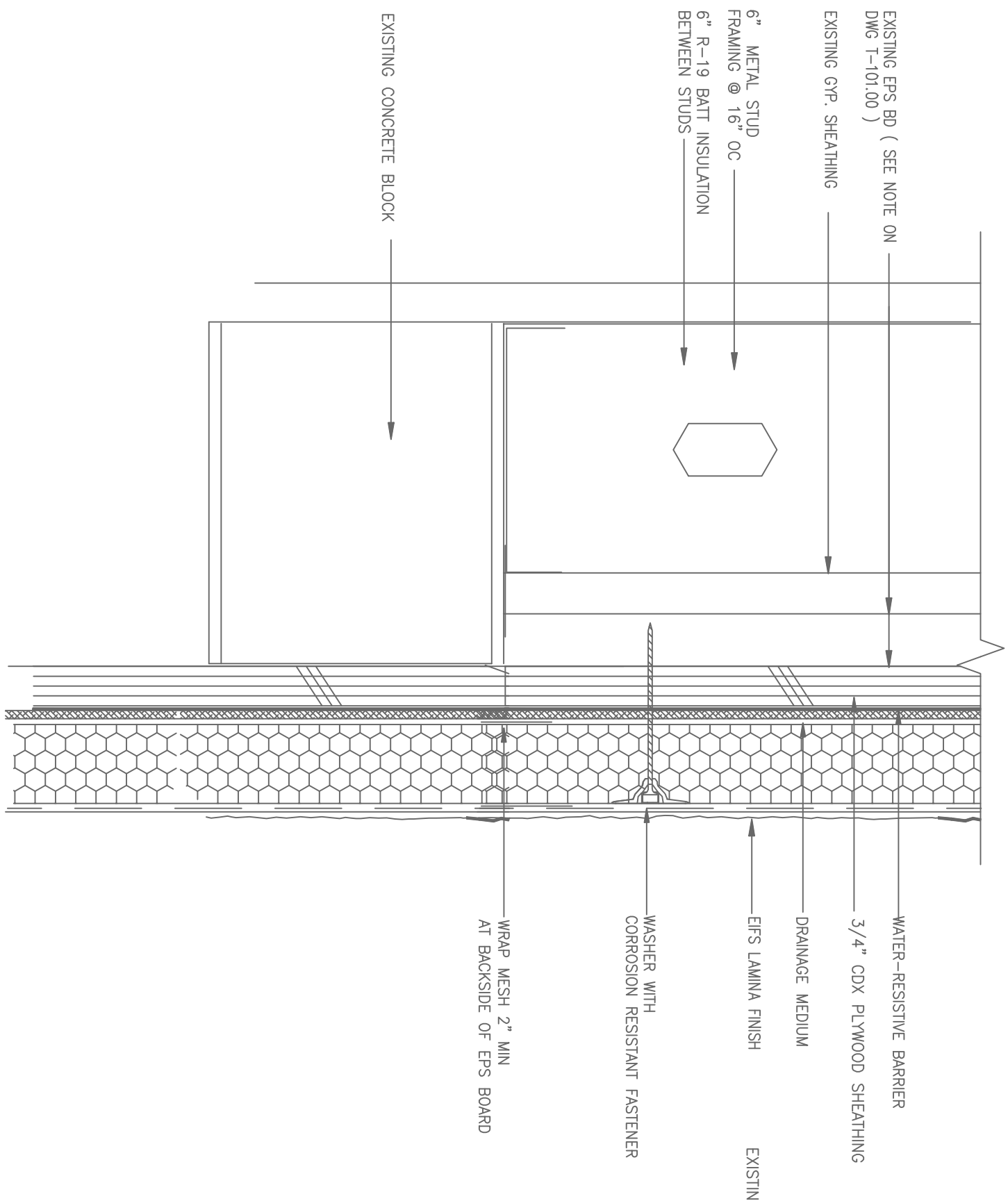
DETAIL AT LOW ROOF



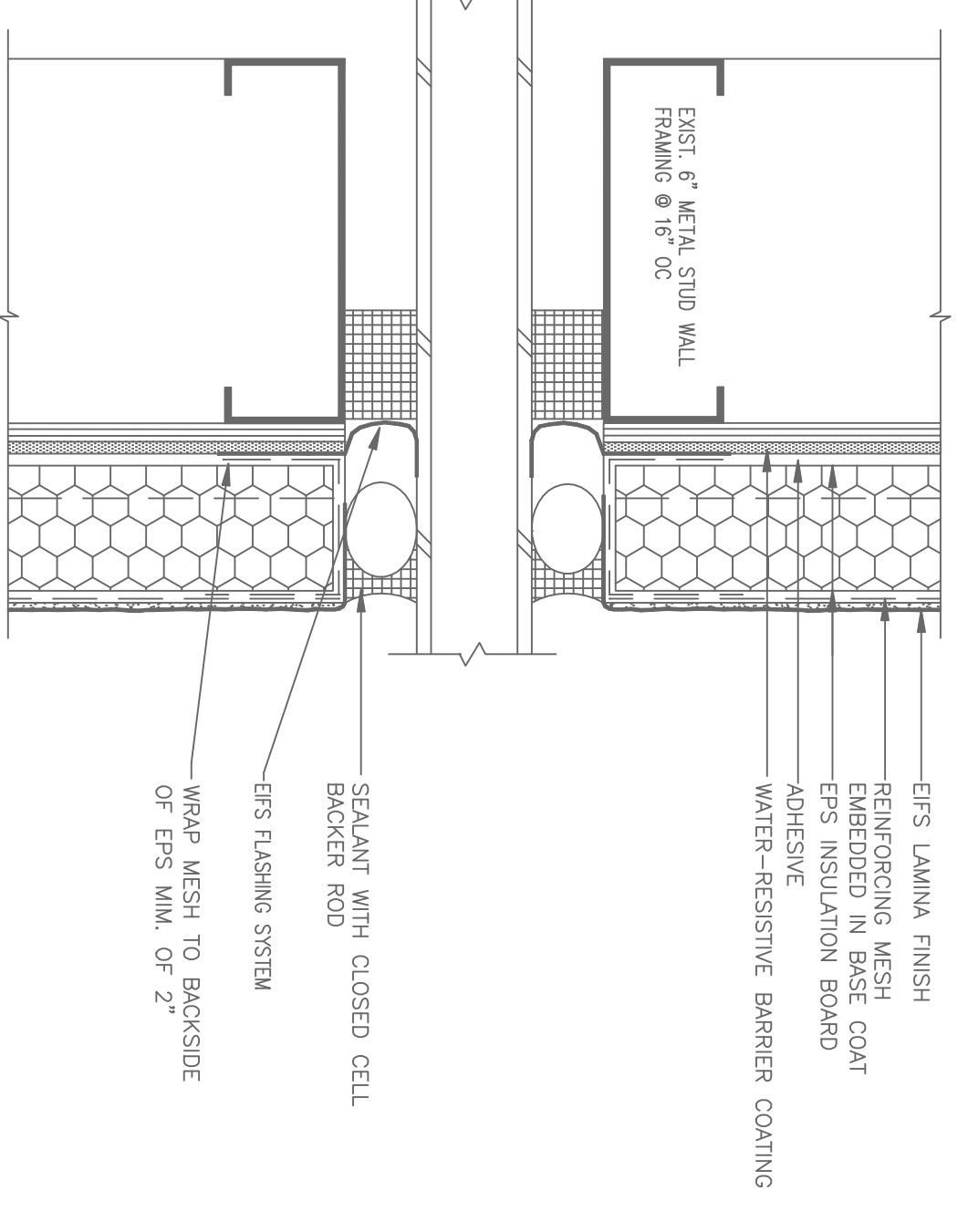
SECTION THRU WALL EXTENSION



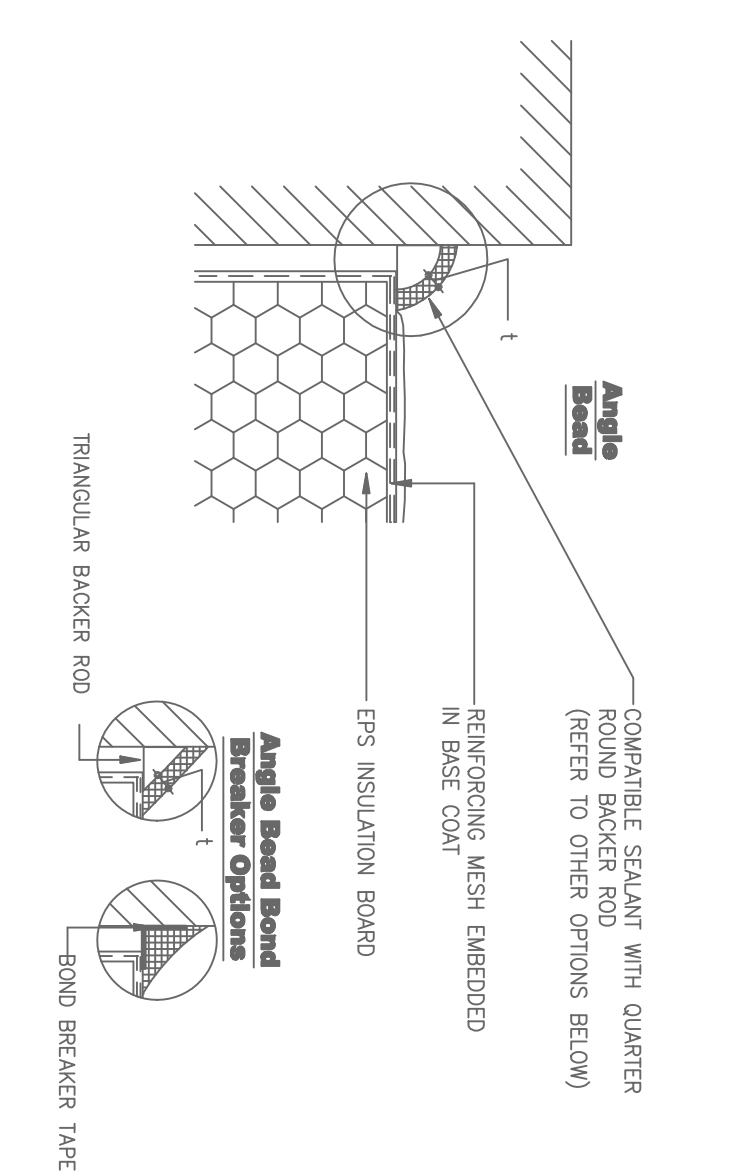
BASE DETAIL AT SOUTH FACADE



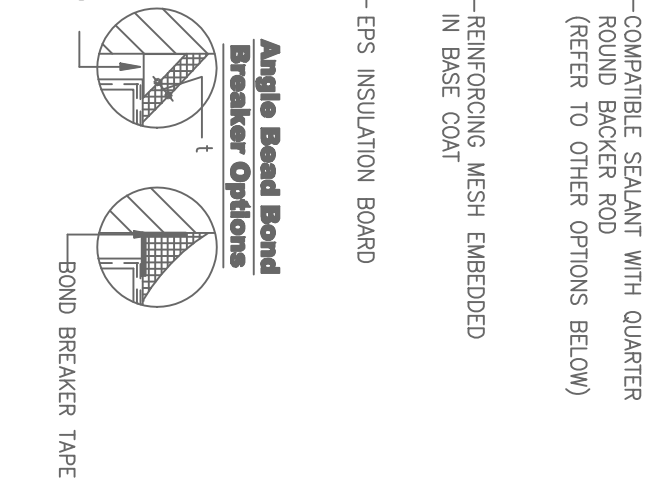
DETAIL AT ROOF



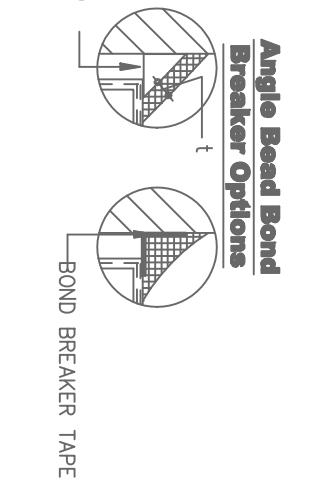
SECTION THRU WALL PENETRATIONS



Rectangular Sealant



Angle Seal



Angle Bead Seal

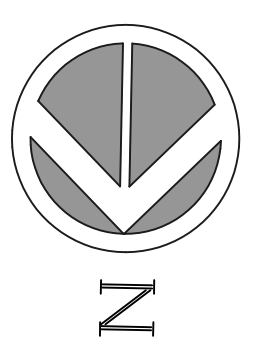
EQUL ANGLE BEADS:
t = 6.4 mm (1/4") min.
w = 12.7 mm (1/2") min.
material but not less than 3.2 mm (1/8")

EQUL RECTANGULAR BEADS:
t = 6.4 mm (1/4") min.
w = 12.7 mm (1/2") min.
w/t = 2:1

SEALANT CONFIGURATIONS

© FRANK A. LOMBARDO ARCHITECT, INC. 2024
THIS DRAWING IS THE PROPERTY OF FRANK A. LOMBARDO ARCHITECT, INC. AND IS TO BE USED ONLY FOR THE PROJECT AND LOCATION SPECIFICALLY IDENTIFIED HEREIN. NO PART OF THIS DRAWING IS TO BE REPRODUCED, COPIED, OR TRANSMITTED IN ANY FORM OR BY ANY MEANS, WITHOUT THE WRITTEN PERMISSION OF FRANK A. LOMBARDO ARCHITECT, INC. THE LIABILITY OF FRANK A. LOMBARDO ARCHITECT, INC. IS LIMITED TO THE DESIGN AND CONSTRUCTION OF THE PROJECT SPECIFICALLY IDENTIFIED HEREIN. NO OTHER LIABILITY IS ASSUMED. THE USER OF THIS DRAWING SHALL BE RESPONSIBLE FOR OBTAINING ALL NECESSARY PERMITS AND FOR THE PROTECTION OF THE PUBLIC. THE USER OF THIS DRAWING SHALL BE RESPONSIBLE FOR THE PROTECTION OF THE PUBLIC. THE USER OF THIS DRAWING SHALL BE RESPONSIBLE FOR THE PROTECTION OF THE PUBLIC.

FACADE RESTORATION 911 MONTAUK HIGHWAY MASTIC-SHIRLEY, N.Y.



FRANK A. LOMBARDO
ARCHITECT
1100 ROUTE 128
WESTHALE, NY 11778-0128
E Mail: f.a.lombardo@frankalombardo.com

DRAWING TITLE :
FACADE EPS DETAILS

DATE:	1/25/24
PROJECT NO.:	-
DWG. BY:	FAL
CHK. BY:	FAL
DWG. NO.:	A-105
PAGE NO.:	5 OF 5