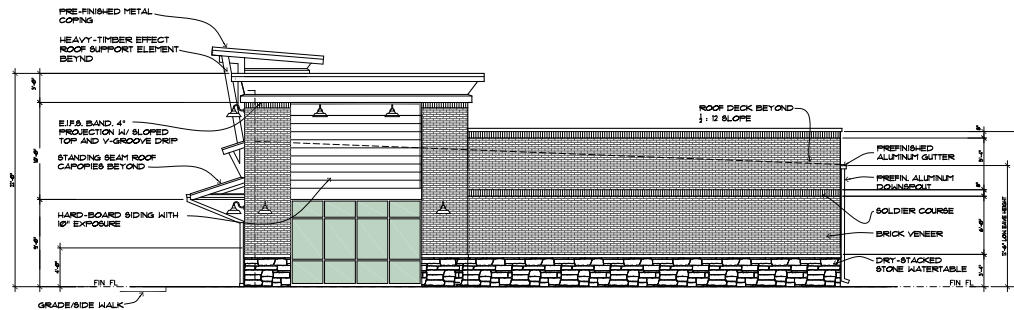




Preliminary South Elevation  
Scale 3/16" = 1'-0"



Preliminary East Elevation / West Elevation opp.  
Scale 3/16" = 1'-0"

## PROPERTY HIGHLIGHTS

- C-4
- City of Huntsville
- 1250 to 7500 SF Available
- Call For Pricing
- Parking 6 per 1000 SF

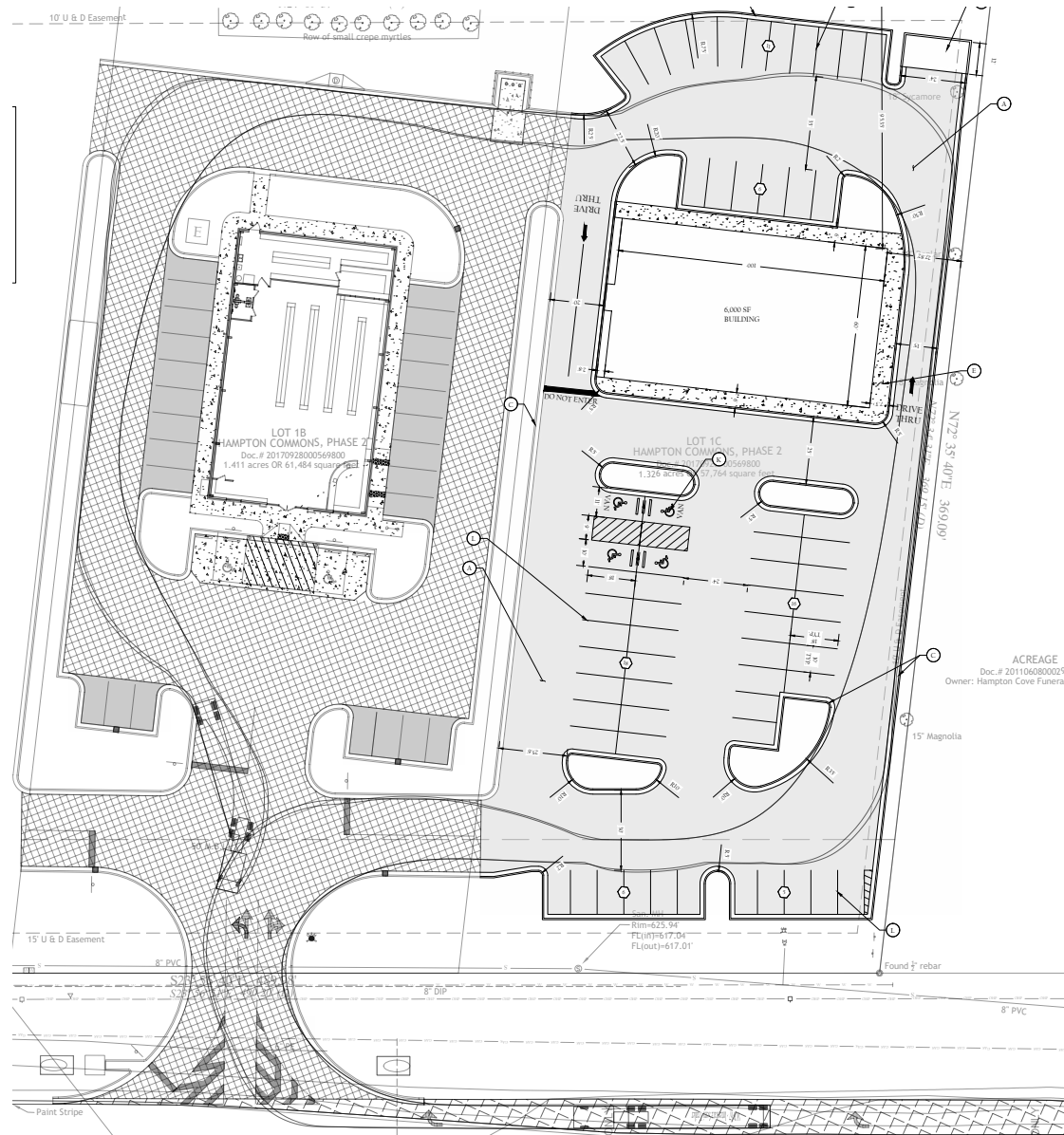
## LOCAL PROXIMITY SUMMARY

Redstone Arsenal	13 Miles
Cummings Research Park	15.7 Miles
Huntsville Hospital	7.5 Miles
Downtown Huntsville	8.2 Miles



CHAPMAN COMMERCIAL REALTY  
2310 WHITESBURG DRIVE, SUITE 6  
HUNTSVILLE, AL 35801  
www.chapmancommercialrealty.com

**William M. Chapman**  
256.656.8413 Mobile  
256.715.8064 Office  
bill@huntsvillecommercialbrokerage.com



**CHAPMAN COMMERCIAL REALTY**  
2310 WHITESBURG DRIVE, SUITE 6  
HUNTSVILLE, AL 35801  
www.chapmancommercialrealty.com

**William M. Chapman**  
256.656.8413 Mobile  
256.715.8064 Office  
bill@huntsvillecommercialbrokerage.com



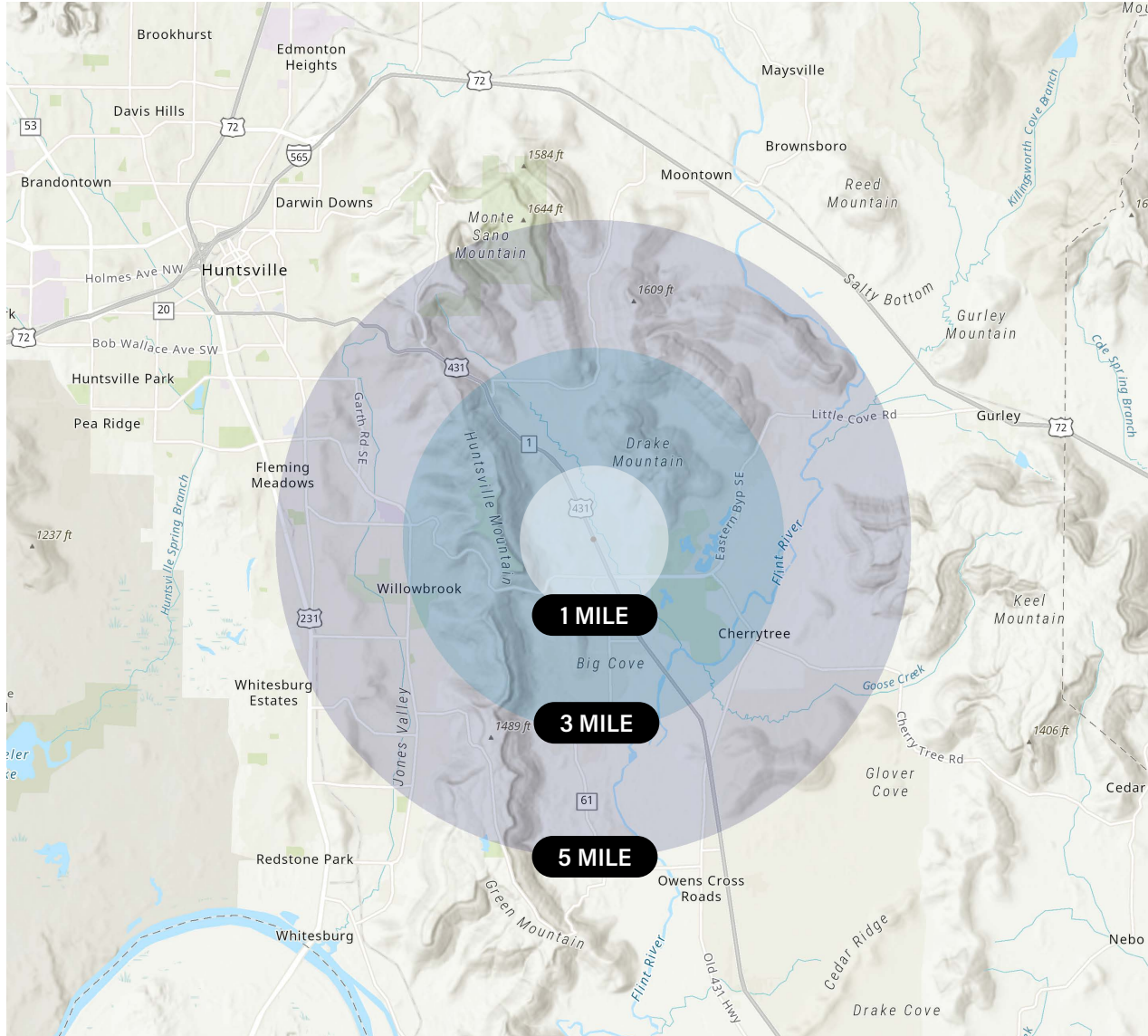
CHAPMAN COMMERCIAL REALTY  
 2310 WHITESBURG DRIVE, SUITE 6  
 HUNTSVILLE, AL 35801  
[www.chapmancommercialrealty.com](http://www.chapmancommercialrealty.com)

**William M. Chapman**  
 256.656.8413 Mobile  
 256.715.8064 Office  
[bill@huntsvillecommercialbrokerage.com](mailto:bill@huntsvillecommercialbrokerage.com)



CHAPMAN COMMERCIAL REALTY  
2310 WHITESBURG DRIVE, SUITE 6  
HUNTSVILLE, AL 35801  
www.chapmancommercialrealty.com

William M. Chapman  
256.656.8413 Mobile  
256.715.8064 Office  
bill@huntsvillecommercialbrokerage.com



## 1 MILE

Population	1,636
Households	631
Families	453
Average Household Size	2.52
Median Age	34.4
Median Household Income	\$79,463
Average Household Income	\$98,394

## 3 MILE

Population	5,905
Households	2,303
Families	1,640
Average Household Size	2.53
Median Age	38.1
Median Household Income	\$87,890
Average Household Income	\$111,330

## 5 MILE

Population	14,235
Households	5,357
Families	4,004
Average Household Size	2.64
Median Age	39.7
Median Household Income	\$103,373
Average Household Income	\$130,585



**CHAPMAN COMMERCIAL REALTY**  
 2310 WHITESBURG DRIVE, SUITE 6  
 HUNTSVILLE, AL 35801  
[www.chapmancommercialrealty.com](http://www.chapmancommercialrealty.com)

**William M. Chapman**  
 256.656.8413 Mobile  
 256.715.8064 Office  
[bill@huntsvillecommercialbrokerage.com](mailto:bill@huntsvillecommercialbrokerage.com)



Chapman Commercial Realty is focused on providing expert services across Office, Industrial, Retail and Land properties located throughout North Alabama. We are committed to enhancing value and building long-term relationships by delivering exceptional service while employing ethical and honest business practices. We are all about providing full service real estate solutions to our clients with the best possible results. Our commercial brokerage team offers knowledge and depth drawn from our many years of experience in the local market.

**William "Bill" Chapman**  
**Broker/Owner**

## REAL ESTATE DISCLAIMER

The information contained herein has been obtained from sources deemed reliable, but has not been verified or confirmed, and no guarantee, warranty or representation, either expressed or implied, is made with respect to such information. Term of sale or lease and availability are subject to change or with-



CHAPMAN COMMERCIAL REALTY  
2310 WHITESBURG DRIVE, SUITE 6  
HUNTSVILLE, AL 35801  
[www.chapmancommercialrealty.com](http://www.chapmancommercialrealty.com)

**William M. Chapman**  
256.656.8413 Mobile  
256.715.8064 Office  
[bill@huntsvillecommercialbrokerage.com](mailto:bill@huntsvillecommercialbrokerage.com)