

# FOR LEASE

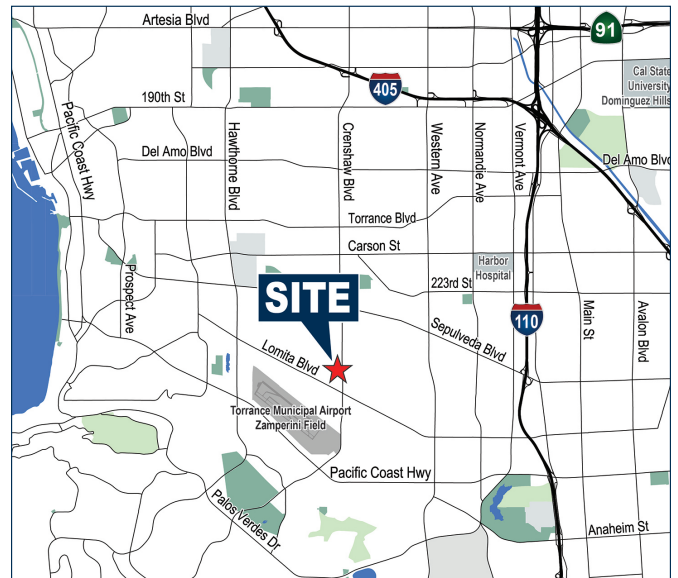
# ±2,845 SF OFFICE SPACE

23705 CRENSHAW BLVD | TORRANCE | CA



## PROPERTY FEATURES

- ± 2,845 SF Second Story Office Space
- 6 Private Offices
- Large Open Office Area
- Break Room
- Storage Rooms
- Excellent Glassline and Exposure to Crenshaw Blvd.
- Professionally Managed Building
- Access to Multiple Nearby Retail Amenities
- Competitive Lease Rate
- Available January 1, 2026



EXCLUSIVELY OFFERED BY:

**Voit**  
REAL ESTATE SERVICES

**CARGILE**  
COMMERCIAL GROUP



**LOREN CARGILE**  
Vice President | Partner  
License #01431329

**(424) 329-7515**  
LCargile@voitco.com



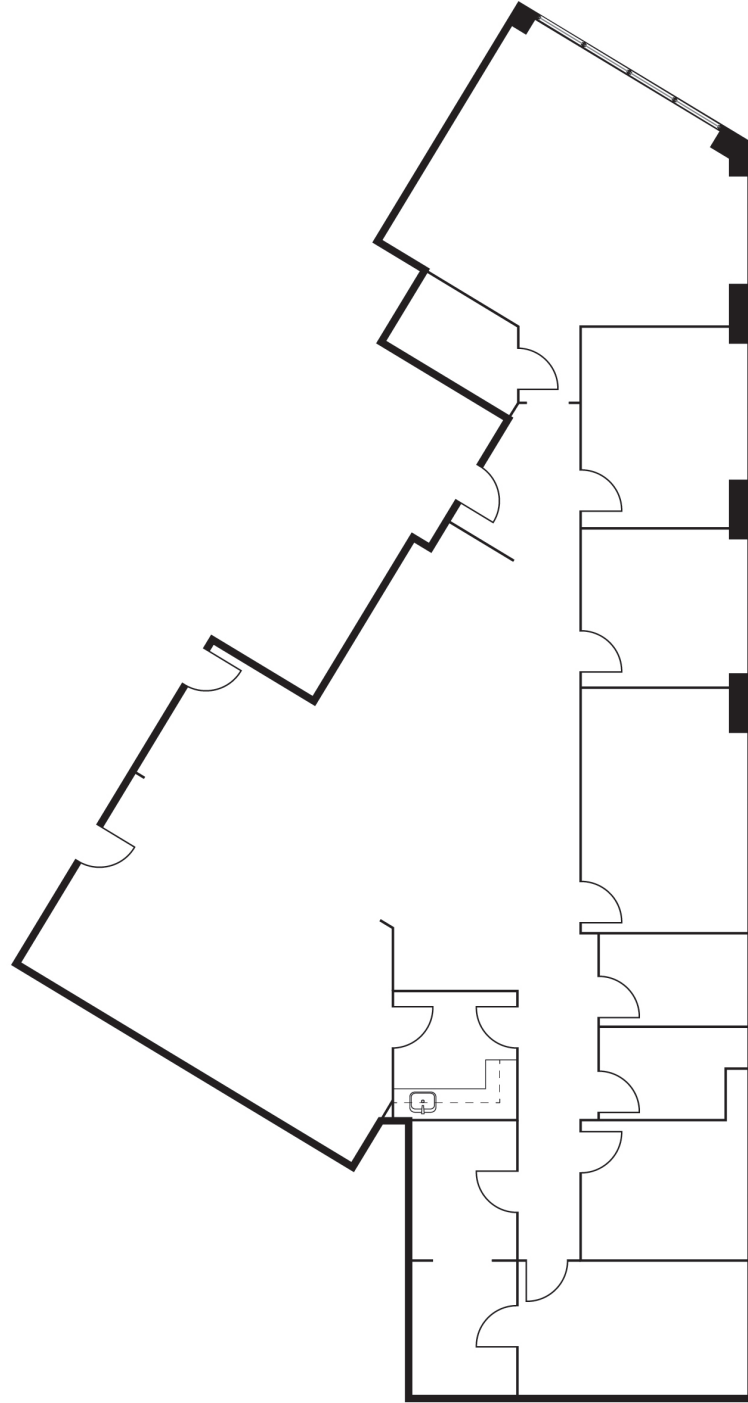
**MIKE CARGILE**  
Senior VP | Partner  
License #00491668

**(949) 263-5338**  
MCargile@voitco.com

2020 Main Street, Suite 100 | Irvine, CA 92614 | [www.voitco.com](http://www.voitco.com)

The information contained herein has been obtained from sources we deem reliable. While we have no reason to doubt its accuracy, we do not guarantee it. Licensed as Real Estate Salespersons by the DRE. ©2024 Voit Real Estate Services, Inc. All Rights Reserved. License #01991785.

FLOOR PLAN



EXCLUSIVELY OFFERED BY:



**LOREN CARGILE**  
Vice President | Partner  
License #01431329

**(424) 329-7515**  
LCargile@voitco.com



**MIKE CARGILE**  
Senior VP | Partner  
License #00491668

**(949) 263-5338**  
MCargile@voitco.com

AMENITIES MAP



EXCLUSIVELY OFFERED BY:



**LOREN CARGILE**  
 Vice President | Partner  
 License #01431329

**(424) 329-7515**  
 LCargile@voitco.com



**MIKE CARGILE**  
 Senior VP | Partner  
 License #00491668

**(949) 263-5338**  
 MCargile@voitco.com