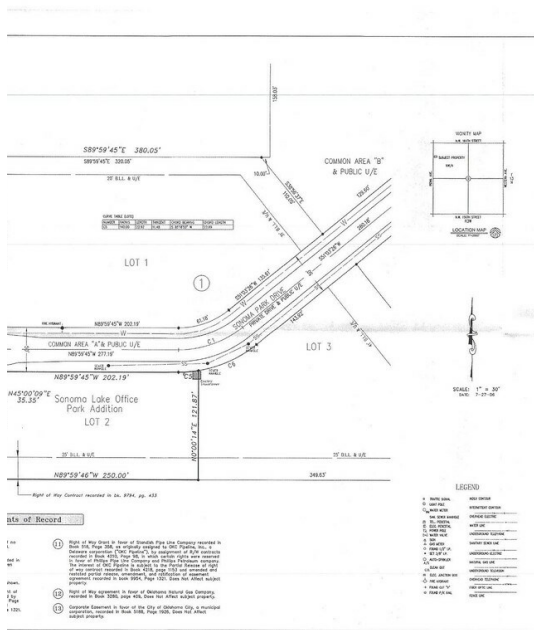


Sonoma Lake Office Park Lot #2 PUD 1029

Sonoma Park Dr., Edmond, OK 73013



NEGOTIATED / STEPHEN CRAIG BRIDEWELL, LLC



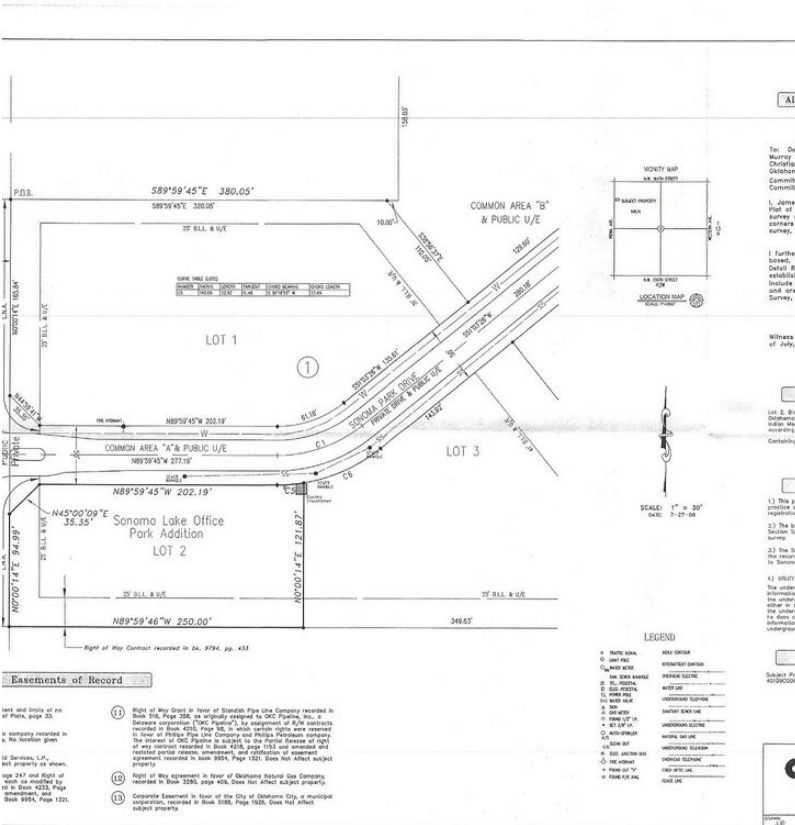
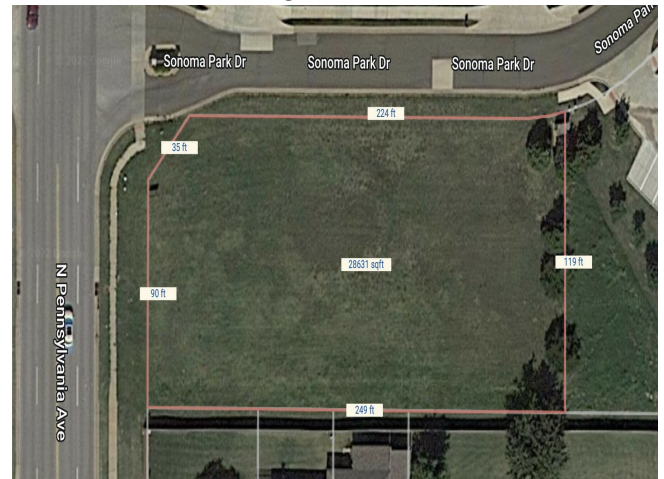
Steve Bridewell
SCB, LLC
218 W Main St, Edmond, OK 73003
scb@coxinet.net
(405) 513-1772

Sonoma Lake Office Park Lot #2 PUD 1029

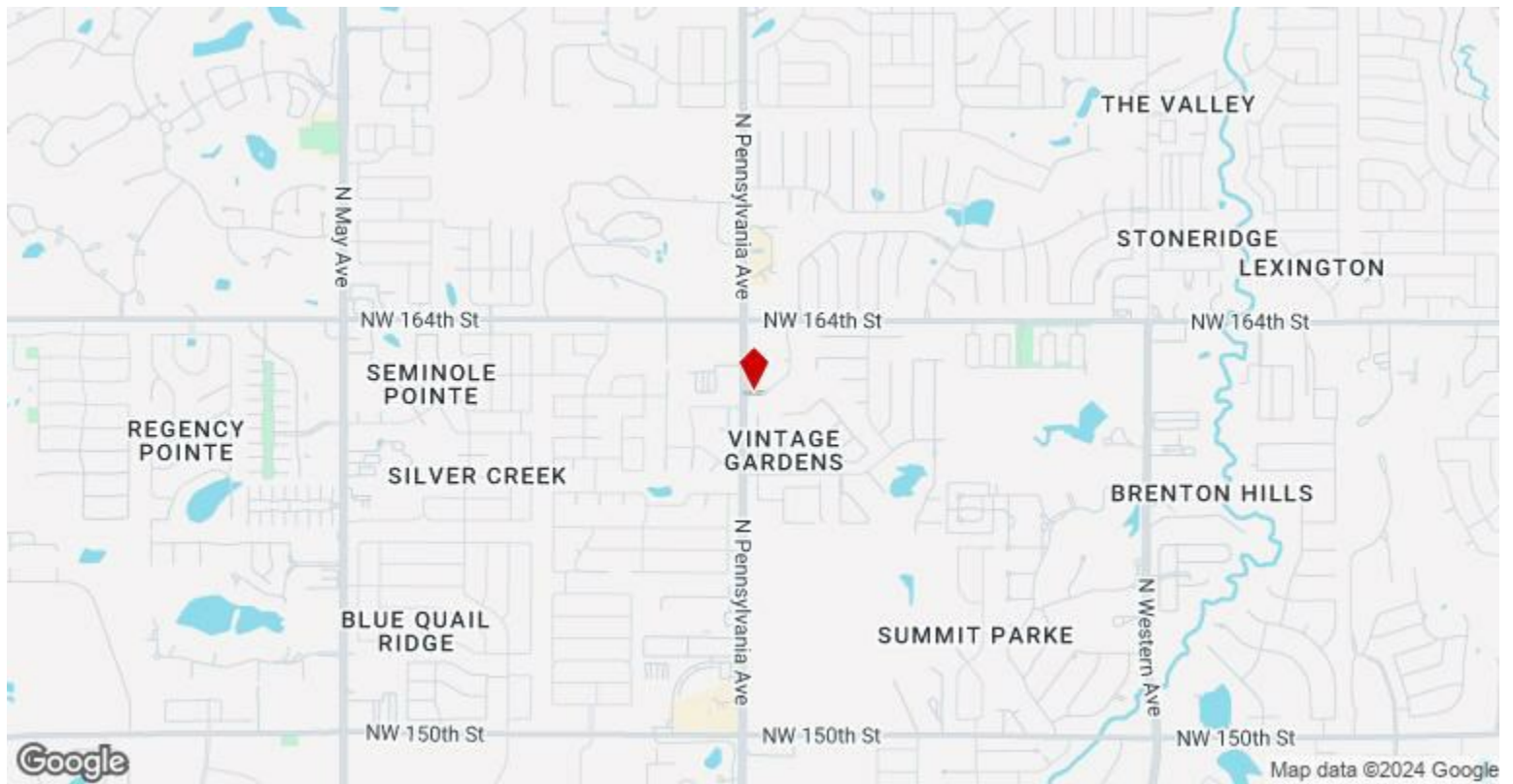
\$360,000

SONOMA LAKE OFFICE PARK LOCATED IN NW EDMOND/OKC LOCATION SERVES BOTH CITIES AS AN IDEAL SITE FOR YOUR BUSINESS: This business park is ideally situated with access to Kilpatrick Turnpike (proximate to Broadway Extension, I-240 and I-35) and within a 20 minute drive to downtown OKC and Will Rogers International Airport. SONOMA LAKE OFFICE PARK is home to national company such as Arvest Bank and local companies that include; medical, legal, salon, executive suites, real estate development, mortgage and insurance companies. Office park is accessed by circle drive connecting to N. Pennsylvania and NW 164th. Choice of restaurants, hotels, SAMS, COSTCO, Topgolf nearby....

- Frontage on N. Pennsylvania
- Located at entrance of office park
- Circle drive connecting N. Penn to NW 164th St.



Price:	\$360,000
Property Type:	Land
Property Subtype:	Commercial
Proposed Use:	Commercial
Sale Type:	Investment or Owner User
Total Lot Size:	0.68 AC
No. Lots:	1
Zoning Description:	C-3
APN / Parcel ID:	206171010



Sonoma Park Dr., Edmond, OK 73013

SONOMA LAKE OFFICE PARK LOCATED IN NW EDMOND/OKC LOCATION SERVES BOTH CITIES AS AN IDEAL SITE FOR YOUR BUSINESS: This business park is ideally situated with access to Kilpatrick Turnpike (proximate to Broadway Extension, I-240 and I-35) and within a 20 minute drive to downtown OKC and Will Rogers International Airport.

SONOMA LAKE OFFICE PARK is home to national company such as Arvest Bank and local companies that include; medical, legal, salon, executive suites, real estate development, mortgage and insurance companies. Office park is accessed by circle drive connecting to N. Pennsylvania and NW 164th. Choice of restaurants, hotels, SAMS, COSTCO, Topgolf nearby.

Property Photos



N.W. 164TH ENTRANCE