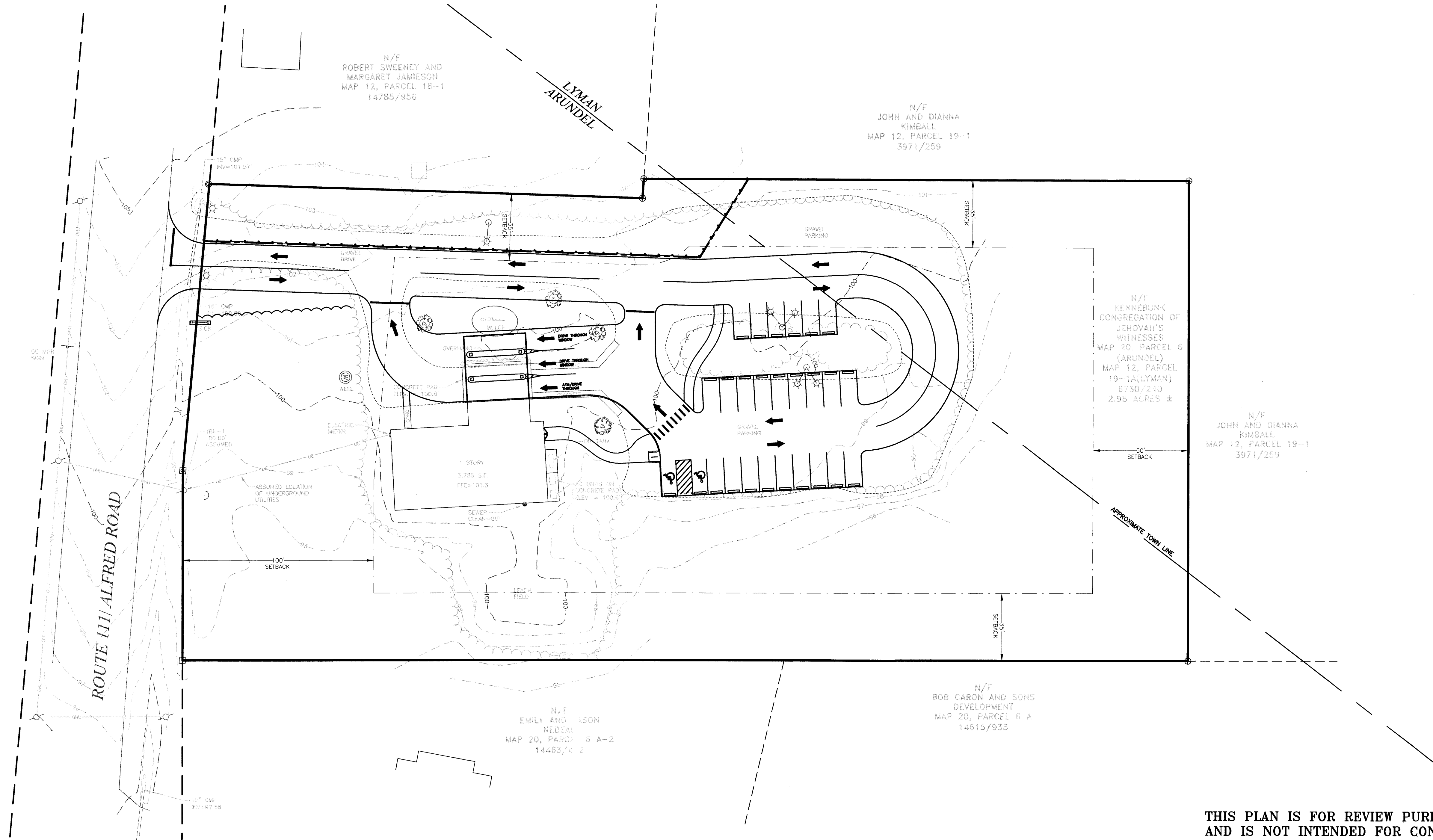
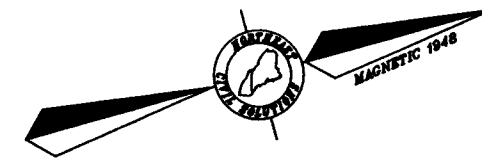
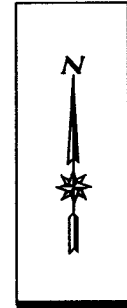
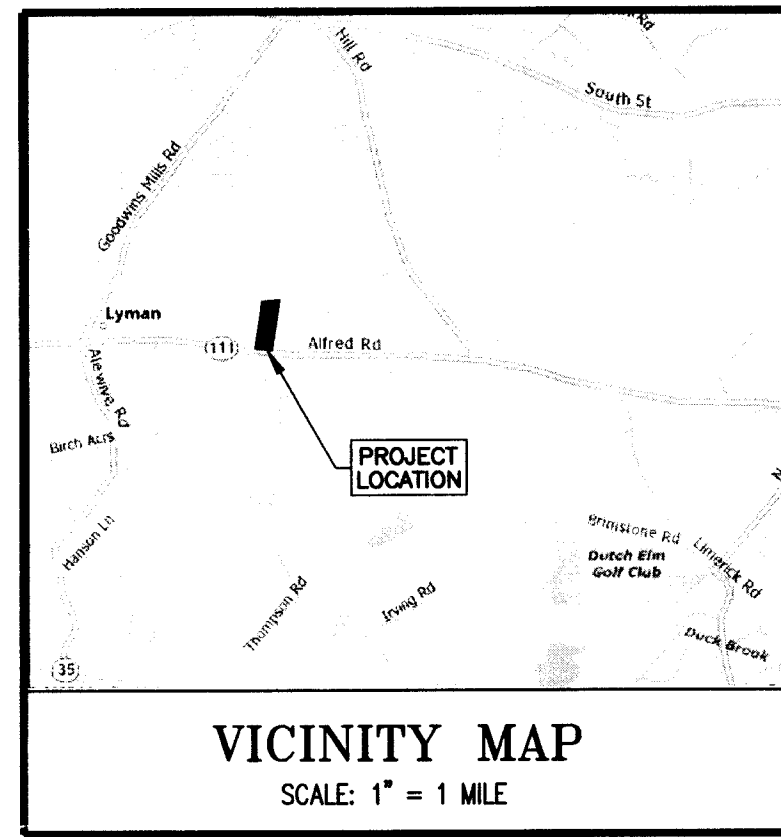


INFINITY FEDERAL CREDIT UNION ARUNDEL, MAINE



THIS PLAN IS FOR REVIEW PURPOSES ONLY
AND IS NOT INTENDED FOR CONSTRUCTION

Revised:	By:	Date:	Change:

<p align="center">SHEET INDEX</p> <ol style="list-style-type: none"> 1. COVER/INDEX/VICINITY MAP 2. BOUNDARY SURVEY 3. GRADING, DRAINAGE & EROSION CONTROL PLAN 4. SITE AND UTILITY PLAN 5. EROSION AND SEDIMENTATION CONTROL NOTES AND DETAILS 6. CONSTRUCTION DETAILS 7. PRE-DEVELOPMENT DRAINAGE PLAN 8. POST-DEVELOPMENT DRAINAGE PLAN L-1 PLANTING PLAN L-2 PLANTING DETAILS L-3 LIGHTING PLAN 	<p>PROJECT NUMBER: 29954</p> <p>ACAD FILE: 29954-COVER</p> <p>SCALE: 1" = 30'</p> <p>DATE: MAY 10, 2007</p>
	<p>Drawing Name: COVER/INDEX/VICINITY MAP</p> <p>Project Name: INFINITY FEDERAL CREDIT UNION 1298 ALFRED ROAD, ARUNDEL, MAINE 04046</p> <p>Owner/Applicant: INFINITY FEDERAL CREDIT UNION P.O. BOX 9742, PORTLAND, MAINE 04104</p>
	<p align="center"> </p> <p align="center"> </p> <p align="center"> Northeast Civil Solutions INCORPORATED 153 US ROUTE 1, SCARBOROUGH, MAINE 04074 tel 207.883.1000 fax 207.883.1001 e-mail info@northeastcivilsolutions.com 800.882.2227 </p> <p align="right"> </p>

**PRELIMINARY
REVIEW
5-10-07**