



WWW.GOODMANREALESTATE.COM
216.381.8200

THE SHOPS AT HAWK'S LANDING

Jerome Township, Ohio



HIGHLIGHTS

- 10 acres of new, mixed-use land available for development across from Dublin Green Shopping Center (Costco, ALDI, T.J.Maxx, HomeGoods, PetSmart, Sprint, Beer Barrel Pizza & Grill, Bibibop, Chase Bank, Wendy's, and Tim Hortons)
- Over 4,000 new single and multifamily residences in planning and under construction within approximately 3 miles of site
- Excellent visibility from US-33, which carries over 55,000 VPD
- Less than 1 mile from SportsOhio, a 100-acre sports park offering 17 sports/activities, camps, and clinics for both children and adults
- Less than ¼ mile from both Columbus State Community College's Dublin Campus and Ohio University Heritage College of Osteopathic Medicine

DEMOGRAPHICS

POPULATION	3 MILE	5 MILE	7 MILE
2030 Projection	39,669	128,866	251,438
2025 Estimate	38,857	124,171	241,352
INCOME	3 MILE	5 MILE	7 MILE
2025 Average	\$191,275	\$161,254	\$152,854
2025 Median	\$150,238	\$120,574	\$116,192
DAYTIME POPULATION	3 MILE	5 MILE	7 MILE
2025 Employees	19,080	44,746	72,106

LEASING INFORMATION

www.goodmanrealestate.com
216.381.8200

CLEVELAND

THE OFFICES OF LEGACY VILLAGE
25333 CEDAR ROAD, SUITE 305
CLEVELAND, OH 44124

COLUMBUS

389 E. LIVINGSTON AVENUE
COLUMBUS, OHIO 43215

DANIEL CLARK

EVP and Director, Columbus Office

daniel@goodmanrealestate.com

JOE BELINSKE

Sales Associate, Columbus Office

joe@goodmanrealestate.com



LEASING INFORMATION

www.goodmanrealestate.com

216.381.8200

DANIEL CLARK

EVP and Director, Columbus Office

daniel@goodmanrealestate.com

JOE BELINSKE

Sales Associate, Columbus Office

joe@goodmanrealestate.com

THE SHOPS AT HAWK'S LANDING

Jerome Township, Ohio



THE INFORMATION ABOVE HAS BEEN OBTAINED FROM SOURCES BELIEVED TO BE RELIABLE. GOODMAN REAL ESTATE SERVICES GROUP LLC AND ITS AGENTS, ASSOCIATES, AND EMPLOYEES MAKE NO GUARANTEE, WARRANTY OR REPRESENTATION ABOUT IT. ALL IMAGES CONTAINED HEREIN ARE THE PROPERTY OF GOODMAN REAL ESTATE SERVICES GROUP LLC AND SHALL NOT BE DUPLICATED OR REPRODUCED WITHOUT EXPRESS WRITTEN CONSENT OF GOODMAN REAL ESTATE SERVICES GROUP LLC. YOU ACKNOWLEDGE THAT, AS REQUIRED BY THE STATE OF OHIO, YOU HAVE RECEIVED THE CONSUMER GUIDE TO AGENCY RELATIONSHIPS.



LEASING INFORMATION

www.goodmanrealestate.com

216.381.8200

DANIEL CLARK

EVP and Director, Columbus Office

daniel@goodmanrealestate.com

JOE BELINSKE

Sales Associate, Columbus Office

joe@goodmanrealestate.com

THE SHOPS AT HAWK'S LANDING

Jerome Township, Ohio



THE INFORMATION ABOVE HAS BEEN OBTAINED FROM SOURCES BELIEVED TO BE RELIABLE. GOODMAN REAL ESTATE SERVICES GROUP LLC AND ITS AGENTS, ASSOCIATES, AND EMPLOYEES MAKE NO GUARANTEE, WARRANTY OR REPRESENTATION ABOUT IT. ALL IMAGES CONTAINED HEREIN ARE THE PROPERTY OF GOODMAN REAL ESTATE SERVICES GROUP LLC AND SHALL NOT BE DUPLICATED OR REPRODUCED WITHOUT EXPRESS WRITTEN CONSENT OF GOODMAN REAL ESTATE SERVICES GROUP LLC. YOU ACKNOWLEDGE THAT, AS REQUIRED BY THE STATE OF OHIO, YOU HAVE RECEIVED THE CONSUMER GUIDE TO AGENCY RELATIONSHIPS.





joe@goodmanrealestate.com

Jerome Township, Ohio

MARYSVILLE

POWELL

LEWIS CENTER

DUBLIN MUIRFIELD

DUBLIN GREEN

COSTCO WHOLESALE **TJ MAXX** **HOME GOODS** **PET SMART**

SITE

KROGER

MADISON MEADOWS
139 SINGLE-FAMILY HOMES
13 MULTI-FAMILY BUILDINGS
56 AGE-TARGETED HOUSING BUILDINGS

NEW HOMES AND MULTI-FAMILY DEVELOPMENT MAP
Approximately 4,300 New Units
Within Space of Aerial

GOODMAN
REAL ESTATE SERVICES
GROUP LLC

JAN 25

THE INFORMATION ABOVE HAS BEEN OBTAINED FROM SOURCES BELIEVED TO BE RELIABLE. GOODMAN REAL ESTATE SERVICES GROUP LLC AND ITS AGENTS, ASSOCIATES, AND EMPLOYEES MAKE NO GUARANTEE, WARRANTY OR REPRESENTATION ABOUT IT. ALL IMAGES CONTAINED HEREIN ARE THE PROPERTY OF GOODMAN REAL ESTATE SERVICES GROUP LLC AND SHALL NOT BE DUPLICATED OR REPRODUCED WITHOUT EXPRESS WRITTEN CONSENT OF GOODMAN REAL ESTATE SERVICES GROUP LLC. YOU ACKNOWLEDGE THAT, AS REQUIRED BY THE STATE OF OHIO, YOU HAVE RECEIVED THE CONSUMER GUIDE TO AGENCY RELATIONSHIPS.



THE SHOPS AT HAWK'S LANDING

Jerome Township, Ohio

KEY



LEASED



NEGOTIATING



AVAILABLE



NOT PART

UNIT	TENANT	SIZE (SQ. FT.)
1	Available	1.61 AC
2	Available	1.31 AC
3	Available	1.52 AC
4	Leased	±1.88 AC
5	Available	±1.09 AC
6	Moo Moo Car Wash	±1.64 AC

LEASING INFORMATION

DANIEL CLARK

EVP & Manager, Columbus Office
daniel@goodmanrealestate.com

JOE BELINSKE

Sales Associate, Columbus Office
joe@goodmanrealestate.com

CLEVELAND

THE OFFICES OF LEGACY VILLAGE
25333 CEDAR ROAD, SUITE 305
CLEVELAND, OH 44124

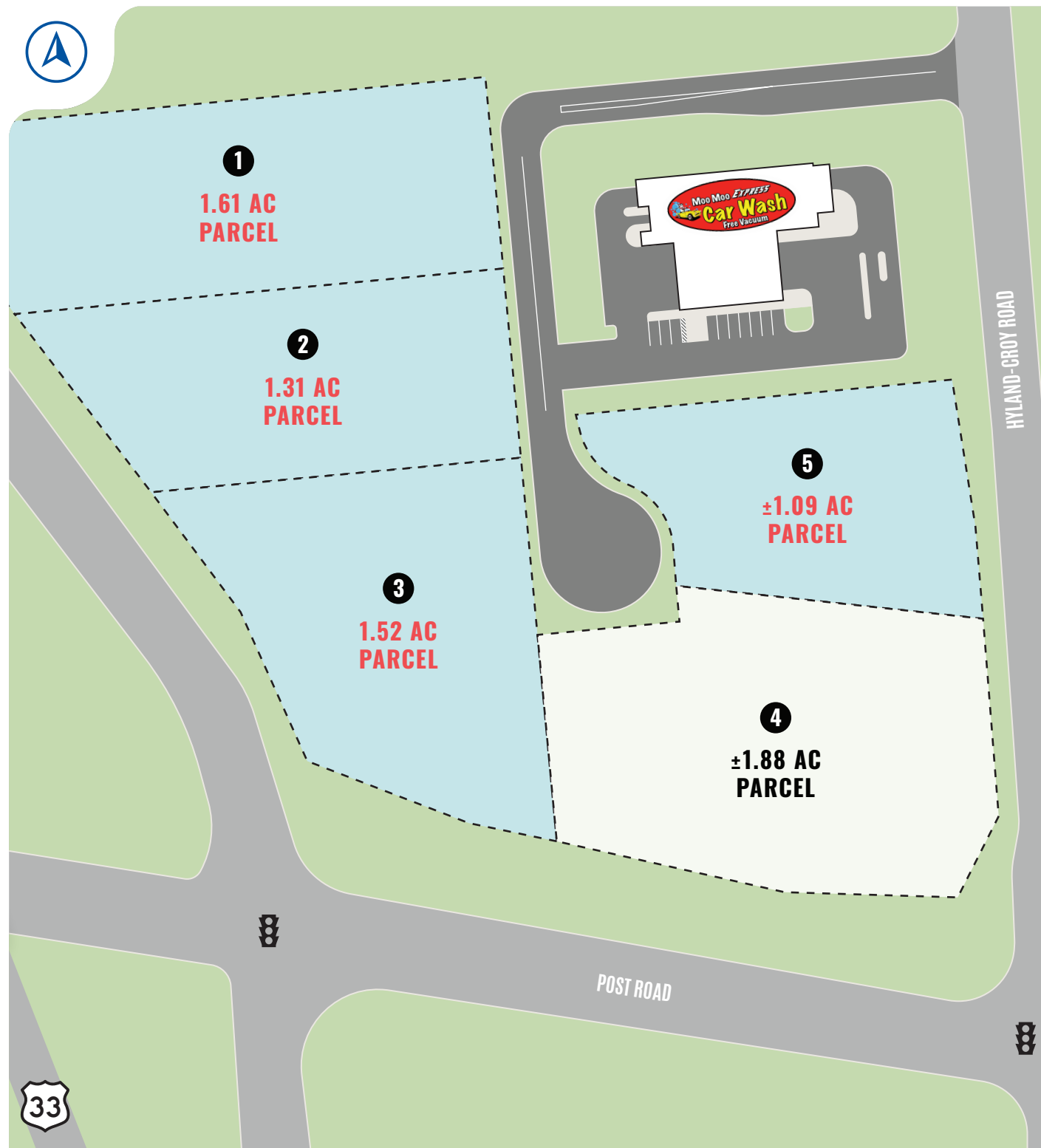
COLUMBUS

389 E. LIVINGSTON AVENUE
COLUMBUS, OHIO 43215

P 216.381.8200

F 216.381.8211

WWW.GOODMANREALESTATE.COM



THE INFORMATION ABOVE HAS BEEN OBTAINED FROM SOURCES BELIEVED TO BE RELIABLE. GOODMAN REAL ESTATE SERVICES GROUP LLC AND ITS AGENTS, ASSOCIATES, AND EMPLOYEES MAKE NO GUARANTEE, WARRANTY OR REPRESENTATION ABOUT IT. ALL IMAGES CONTAINED HEREIN ARE THE PROPERTY OF GOODMAN REAL ESTATE SERVICES GROUP LLC AND SHALL NOT BE DUPLICATED OR REPRODUCED WITHOUT EXPRESS WRITTEN CONSENT OF GOODMAN REAL ESTATE SERVICES GROUP LLC. YOU ACKNOWLEDGE THAT, AS REQUIRED BY THE STATE OF OHIO, YOU HAVE RECEIVED THE CONSUMER GUIDE TO AGENCY RELATIONSHIPS.