



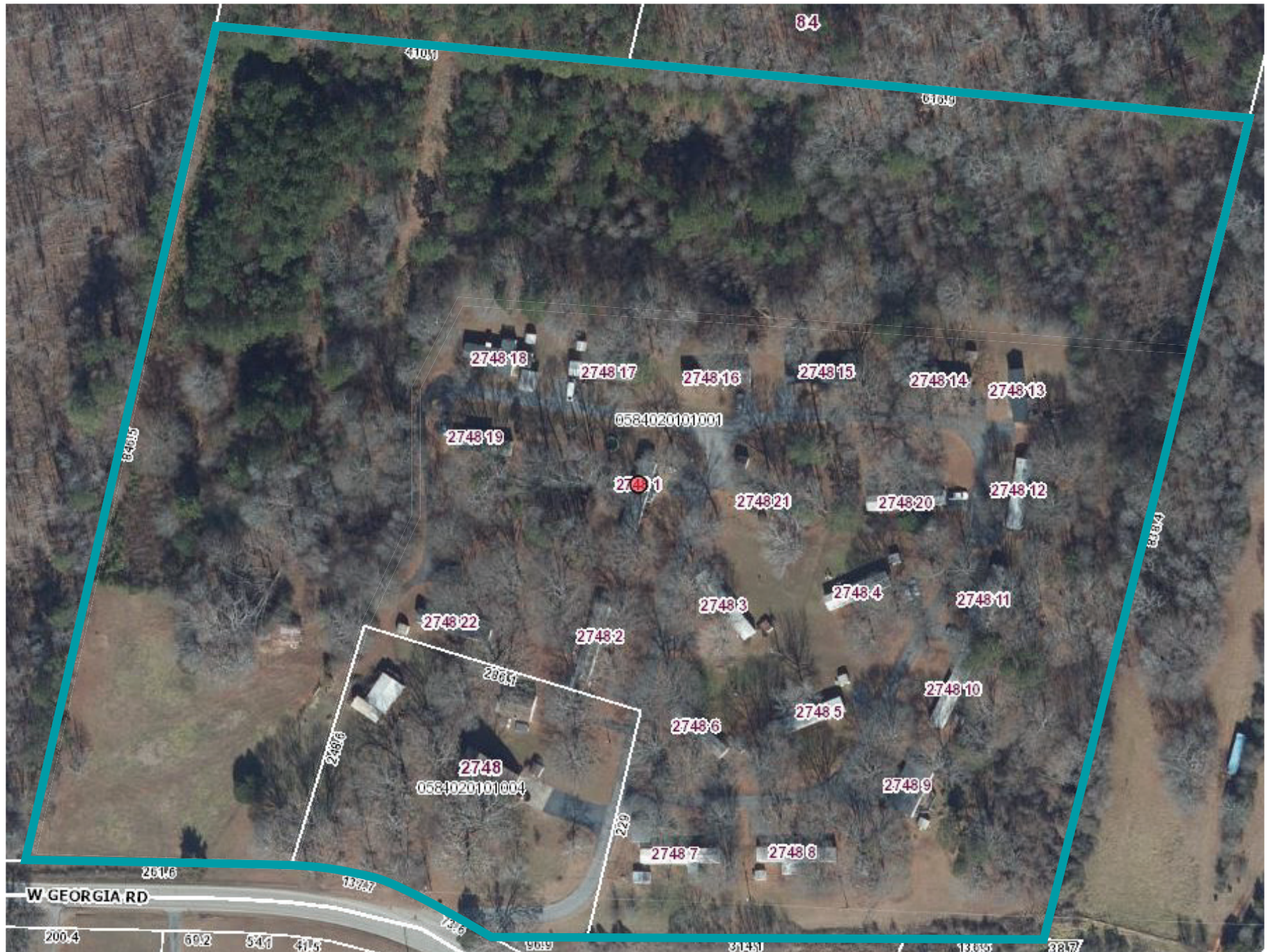
**A UNIQUE INVESTMENT PROPERTY
INCLUDING FARM LAND WITH BARN,
RESIDENTIAL HOUSE, WORKSHOP,
OUTSIDE STORAGE AND A 22 LOT
MOBILE HOME PARK**

**2748 W. GEORGIA RD, PIEDMONT,
SOUTH CAROLINA, 29673**

CONFIDENTIAL OFFERING MEMORANDUM

KLUE
REAL ESTATE ADVISORS
BROKERAGE • DEVELOPMENT CONSULTING • INVESTMENT SALES

AERIAL SITE MAP



PROPERTY PHOTOS

2748 W. GEORGIA RD, PIEDMONT, SOUTH CAROLINA, 29673



DISCLOSURE

The information contained in this Marketing Brochure is proprietary and strictly confidential. It is intended to be reviewed only by the party receiving it from Klue Real Estate Advisors and should not be made available to any other person or entity without the written consent of Klue Real Estate Advisors.

DISCLAIMER

This Marketing Brochure has been prepared to provide summary, unverified information to prospective buyers, and to establish only a preliminary level of interest in the subject property. The information contained herein is not a substitute for a thorough due diligence investigation. Klue Real Estate Advisors have not made any investigation, and makes no warranty or representation, with respect to the income or expenses for the subject property, the future projected financial performance of the property, the size and square footage of the property and improvements, the presence or absence of contaminating substances, PCB's or asbestos, the compliance with any federal or state laws, the physical condition of the improvements thereon, or the financial condition or business prospects of any tenant, or any tenant's plans or intentions to continue its occupancy of the subject property. The information contained in this Marketing Brochure has been obtained from sources we believe to be reliable; however, Klue Real Estate Advisors has not verified, and will not verify, any of the information contained herein, nor did we conduct any investigation regarding these matters and make no warranty or representation regarding the accuracy or completeness of the information provided. All potential buyers must take appropriate measures to verify all of the information set forth herein.

Klue Real Estate Advisors are not affiliated with, sponsored by, or endorsed by any commercial tenant or lessee identified in this marketing package. The presence of any corporation's logo or name is not intended to indicate or imply affiliation with, or sponsorship or endorsement by, said corporation of Klue Real Estate Advisors, its affiliates or subsidiaries, or any agent, product, service, or commercial listing of Klue Real Estate Advisors and is solely included for the purpose of providing tenant lessee information.

ALL PROPERTY SHOWINGS ARE BY APPOINTMENT ONLY.
PLEASE DO NOT DISTURB TENANTS.

CONTACT



Jason P. Klue, BIC

 864.905.8401

 Jason@KlueREA.com

Please check us out at: www.kluerealestateadvisors.com