

# GATEHALL I

1 Gatehall Drive  
Parsippany, NJ 07054

## Office For Lease

2,140 - 4,868 SF



Leasing Information:  
973.599.0050

**Robert E. Lee**   **Rick Genthe**  
973.599.0050   973.599.0050  
rlee@lpc.com   Rgenthe@lpc.com

# Lincoln

Lincoln Property Company  
9 Entin Road Suite 103  
Parsippany, NJ 07054

[www.lpc.com](http://www.lpc.com)

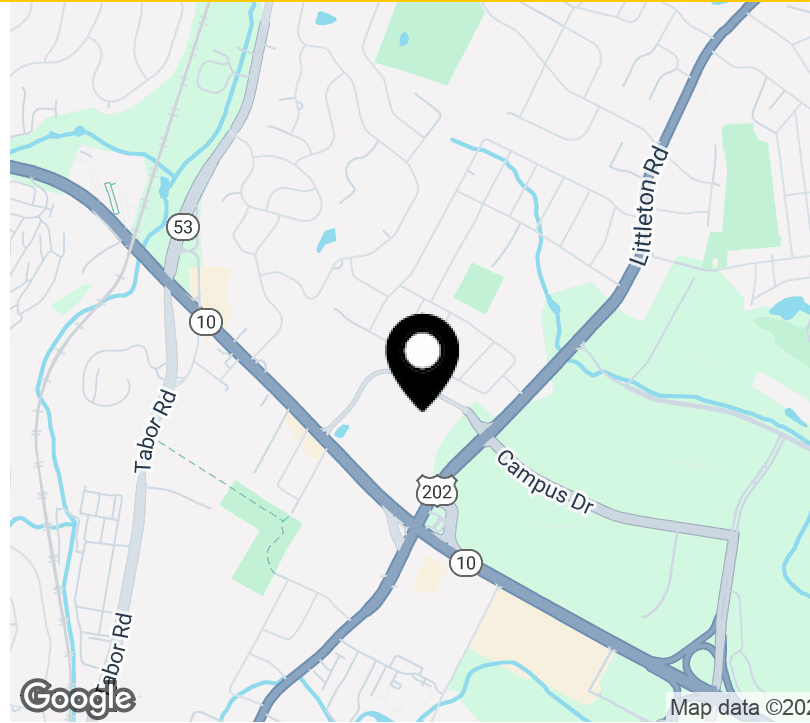


# GATEHALL I

1 Gatehall Drive | Parsippany, NJ 07054

Office For Lease

2,140 - 4,868 SF



## Property Highlights

- On-site Building Engineer and Property Manager
- 24/7 Building Access
- Fitness center with lockers, showers, and restrooms
- Conference Room
- State-of-the-art card access security system
- 3.5/1,000 Car parking - freshly paved lot
- Scenic pond and landscaped exterior seating area off the plaza
- Storage space available
- Connectivity provided by Verizon Fios and Optimum Lightpath Cablevision
- Upscale restaurants and shopping in close proximity
- The Hanover Marriott, Hilton, Hampton Inn, Hyatt House Suites, are all within a two minute drive and the Residence Inn Hotel is just next door within walking distance to Gatehall I
- Full service cafeteria next door that is available to the public

## Property Overview

One Gatehall Drive is located in the heart of Morris County at the major intersection of I-80, I-287, Rt 10 and Rt 202. The buildings architectural features include three levels of balconies giving the property unique and pleasing aesthetics, along with offering a saw tooth design, providing multiple corner offices per floor. One Gatehall Drive is close to several fine restaurants, shopping centers, hotels, and banks.

Availabilities	SF	Lease Rate	Date Available
Suite P009	4,868 SF	\$23.00 TE	Immediately
Suite 101	2,140 SF	\$24.50 TE	Immediately

**Robert E. Lee**   **Rick Genthe**  
973.599.0050   973.599.0050  
rlee@lpc.com   Rgenthe@lpc.com

**Lincoln**



# GATEHALL I

1 Gatehall Drive | Parsippany, NJ 07054

Property Amenities

2,140 - 4,868 SF



**Robert E. Lee**

973.599.0050  
rlee@lpc.com

**Rick Genthe**

973.599.0050  
Rgenthe@lpc.com

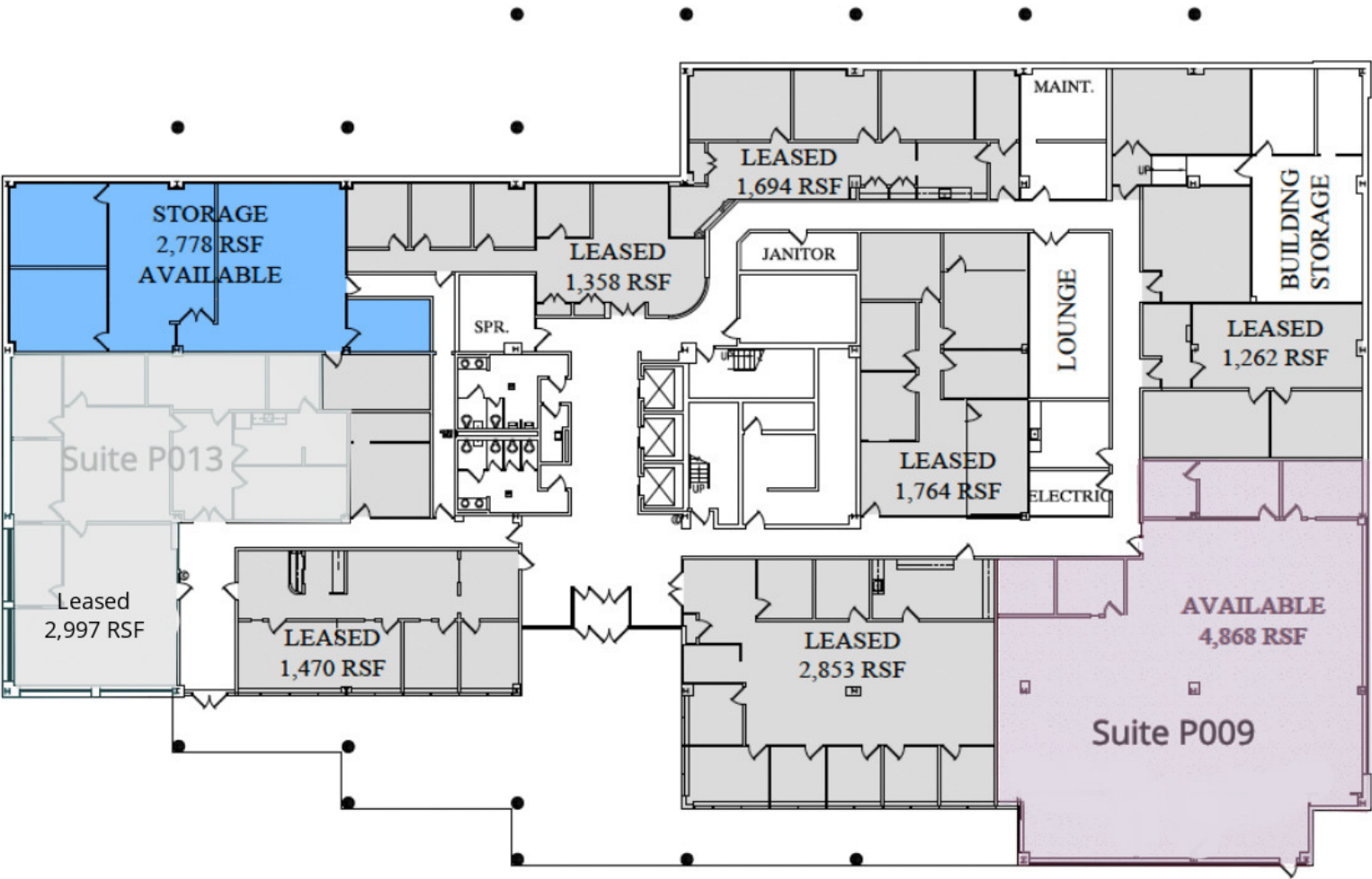
**Lincoln**



# GATEHALL I

1 Gatehall Drive | Parsippany, NJ 07054

Plaza Level  
4,868 SF



Suite	Size	Lease Rate	Description
■ Suite P009	4,868 SF	\$23.00 TE	Fully built-out

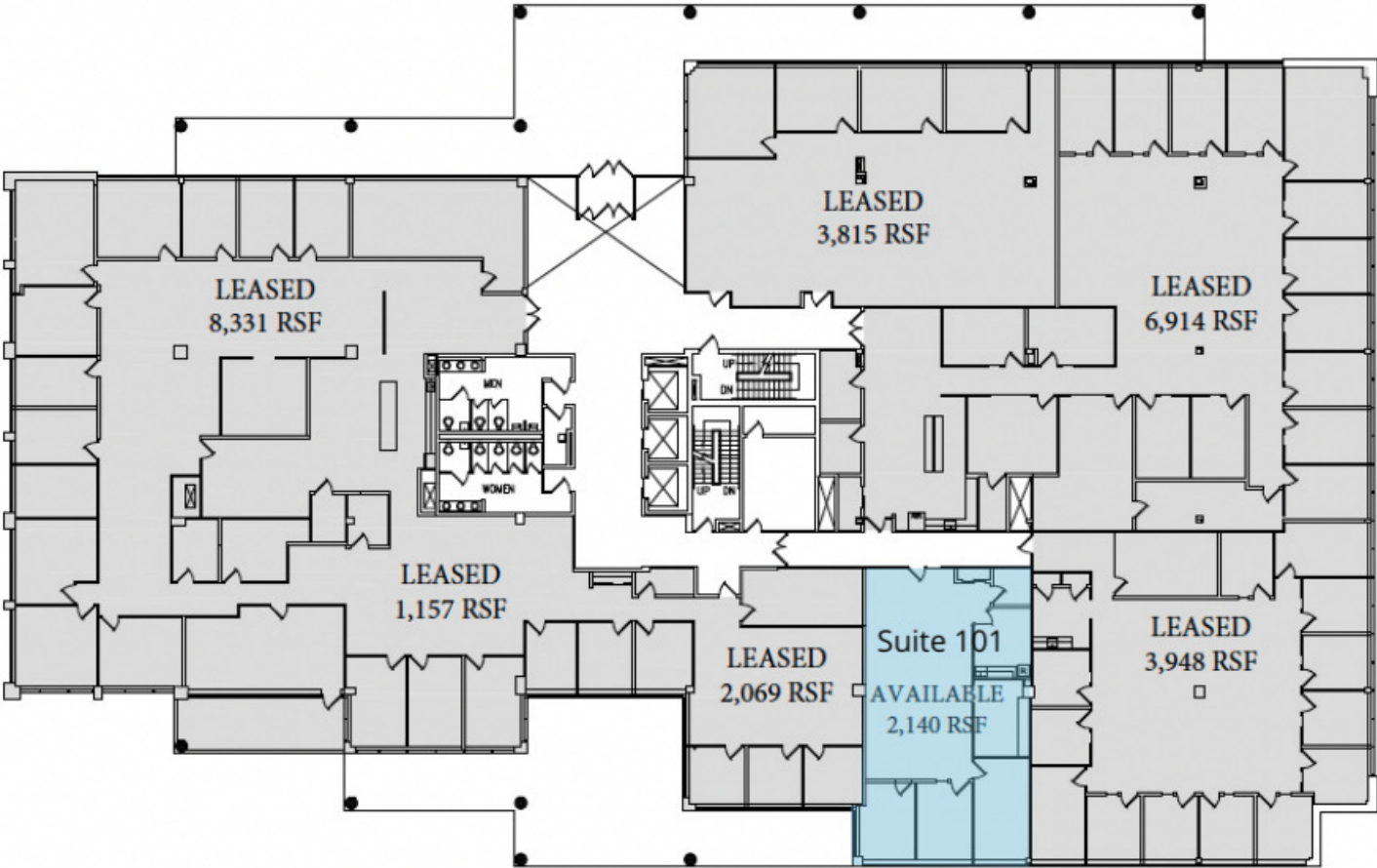
Robert E. Lee    Rick Genthe  
973.599.0050    973.599.0050  
rlee@lpc.com    Rgenthe@lpc.com

Lincoln

# GATEHALL I

1 Gatehall Drive | Parsippany, NJ 07054

Floor 1  
2,140 SF



Suite	Size	Lease Rate	Description
■ Suite 101	2,140 SF	\$24.50 TE	Fully built out with 3 offices, pantry, bullpen, and storage. *Lease Pending

Robert E. Lee    Rick Genthe  
973.599.0050    973.599.0050  
rlee@lpc.com    Rgenthe@lpc.com

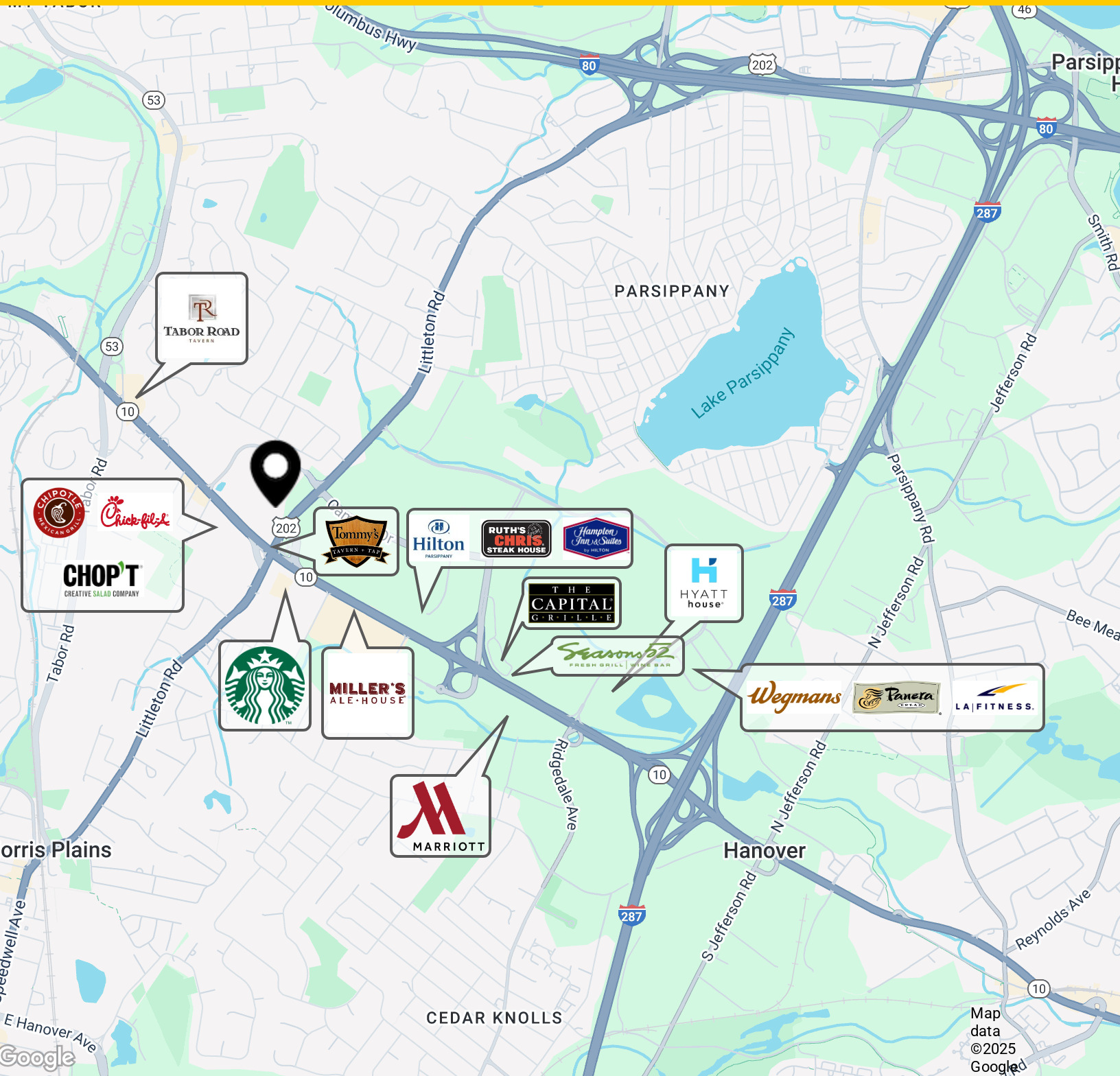
Lincoln

# GATEHALL I

1 Gatehall Drive | Parsippany, NJ 07054

## Nearby Amenities

2,140 - 4,868 SF



Robert E. Lee

973.599.0050

rlee@lpc.com

Rick Genthe

973.599.0050

Rgenthe@lpc.com

Lincoln





# GATEHALL I

1 Gatehall Drive  
Parsippany, NJ 07054

Leasing Information:  
973.599.0050

**Robert E. Lee**  
973.599.0050  
rlee@lpc.com

**Rick Genthe**  
973.599.0050  
Rgenthe@lpc.com

## Lincoln

Lincoln Property Company  
9 Entin Road Suite 103  
Parsippany, NJ 07054

[www.lpc.com](http://www.lpc.com)