

# ±5,280 SF FOR LEASE

## 1929 N Las Vegas Blvd

SWC Lake Mead Blvd & Civic Center Dr  
North Las Vegas, NV 89030



CALL US FOR  
**MORE INFO**

**DAN ADAMSON**

702.550.4934 | dan@roicre.com  
Lic # B.0026992.CORP

**CHRIS WALDBURGER, CCIM**

702.483.3683 | chris@roicre.com  
Lic # S.0190814



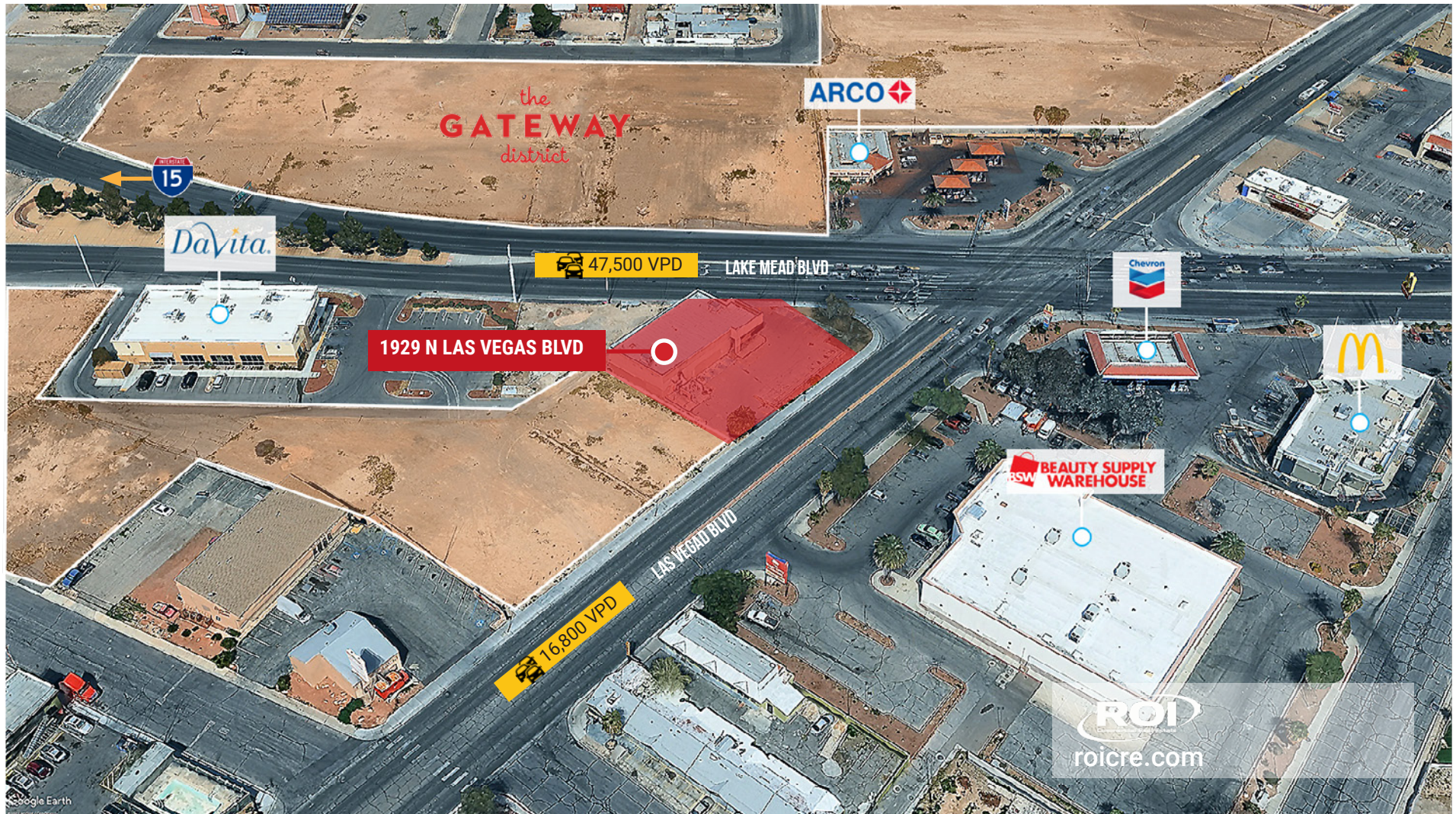
roicre.com



# PROPERTY HIGHLIGHTS

1929 N Las Vegas Blvd  
North Las Vegas, NV 89030

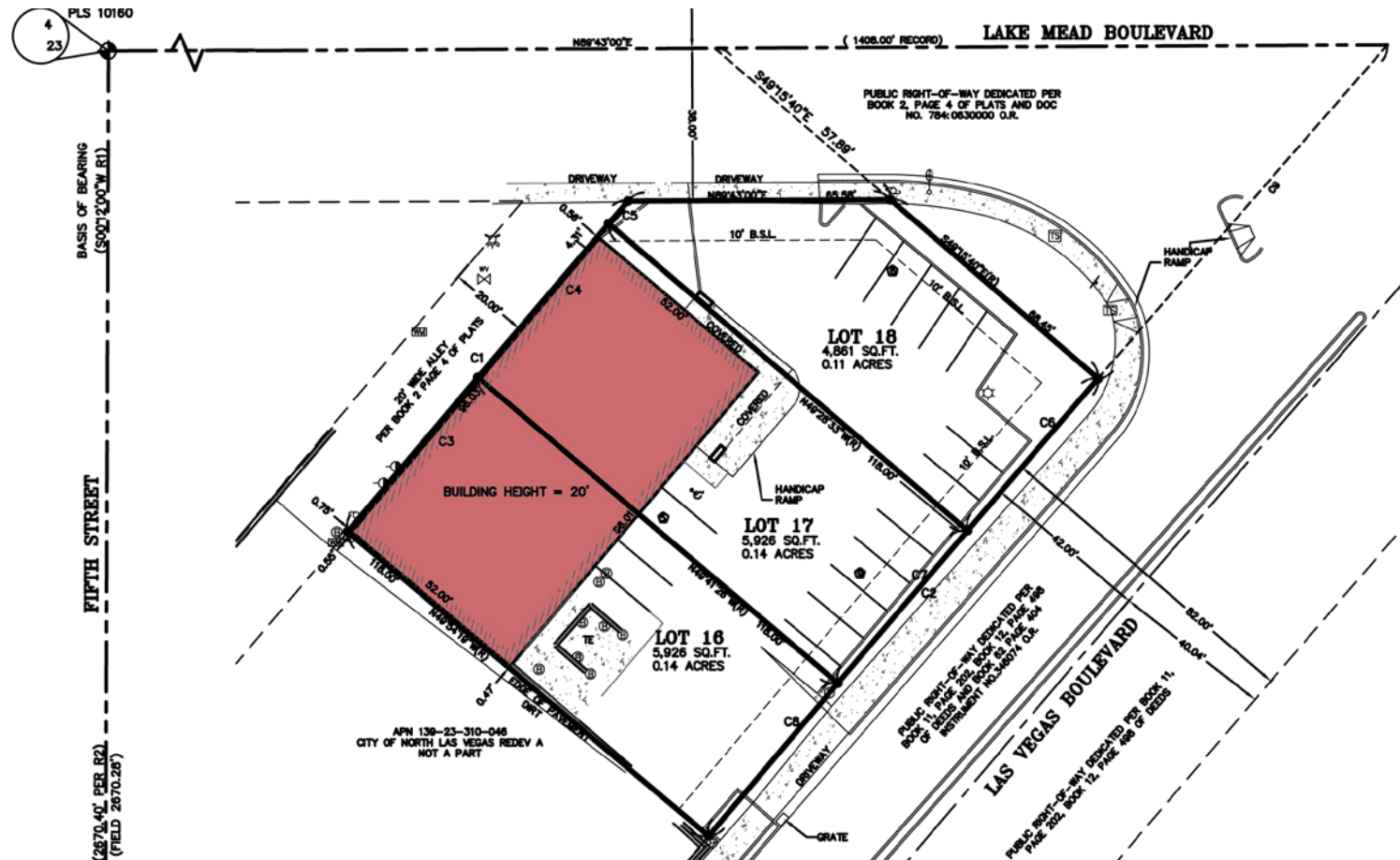
- 5,280 SF freestanding building available located on the hard corner of Lake Mead Blvd and Las Vegas Blvd
- High traffic intersection with over 63,400 VPD (combined)
- Part of the Redevelopment Area of North Las Vegas
- Near the entrance to I-15 via Lake Mead interchange





# PROPERTY SITE PLAN

1929 N Las Vegas Blvd  
North Las Vegas, NV 89030



 **±0.38 AC**  
LAND AREA

 **±5,280 SF**  
BUILDING AREA

 **DOWNTOWN CORE REDEVELOPMENT  
AREA (R-A/DC)**  
ZONING

 **139-23-301-047**  
APN



# TRADE AREA

1929 N Las Vegas Blvd  
North Las Vegas, NV 89030





# AREA DEMOGRAPHICS

1929 N Las Vegas Blvd  
North Las Vegas, NV 89030



## POPULATION

1 Mile	3 Miles	5 Miles
23,259	194,165	505,559



## AVERAGE HOUSEHOLD INCOME

1 Mile	3 Miles	5 Miles
\$56,357	\$66,850	\$78,046



## DAYTIME POPULATION

1 Mile	3 Miles	5 Miles
11,204	71,128	171,022



## TRAFFIC COUNTS

Lake Mead Blvd	Las Vegas Blvd
48,500 VPD	17,500 VPD

Sources:  
SitesUSA 2025  
TRINA, NV DOT 2023





[www.roicre.com](http://www.roicre.com)



9121 W Russell Rd  
Suite 111  
Las Vegas, NV 89148

# FOR MORE INFORMATION

## DAN ADAMSON



702.550.4934



[dan@roicre.com](mailto:dan@roicre.com)



NV Lic# B.0026992.CORP

## CHRIS WALDBURGER, CCIM



702.483.3683



[chris@roicre.com](mailto:chris@roicre.com)



NV Lic S.0190814

## Let's Stay Connected!



[facebook.com/roicre](https://facebook.com/roicre)



[@roicre](https://twitter.com/roicre)



[@roi.cre](https://www.instagram.com/roi.cre)



[linkedin.com/company/roicre/](https://linkedin.com/company/roicre/)

### DISCLAIMER

All information contained herein is from sources we deem reliable, and we have no reason to doubt its accuracy; however, no guarantee or responsibility is assumed thereof, and it shall not form any part of future contracts. Properties are submitted subject to errors and omissions and all information should be carefully verified. All measurements quoted herein are approximate. Demographics are provided by SitesUSA using data from private and government sources deemed to be reliable. The information herein is provided without representation or warranty. Georeferenced data herein are provided by Placer Labs, Inc. and is provided without representation or warranty. Photos contained herein are property of their respective owners. Photos do not guarantee the current condition of the property.