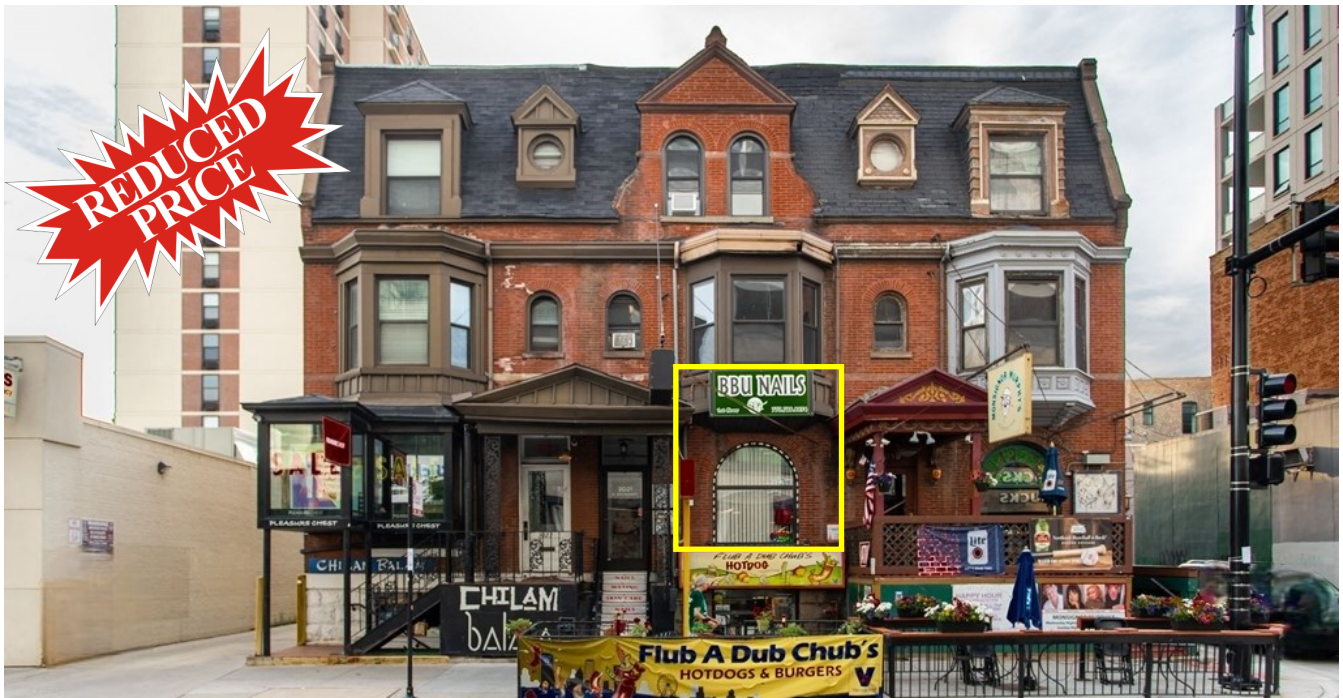


±1,200 SF STORE FOR LEASE IN LAKEVIEW EAST



1,200 SF clean and bright retail space available for lease in Lakeview East. Located on the second level of a three-story building directly across from Mariano's, XSport and Starbucks. Great visibility building with tenants Chilam Balam, Flub a Dub Chub's, and Monsignor Murphy's Sports Pub. Population of 88,204 within 1 mile radius with 52,140 households and average household income of \$122,486.



Size:	±1,200 SF
Rental Rate:	\$3,000 Monthly \$2,600 Monthly
Rental Type:	Modified Gross
Nearby Businesses:	Mariano's XSport Starbucks CVS Taco Bell Flub a Dub Chub's Chilam Balam Monsignor Murphy's



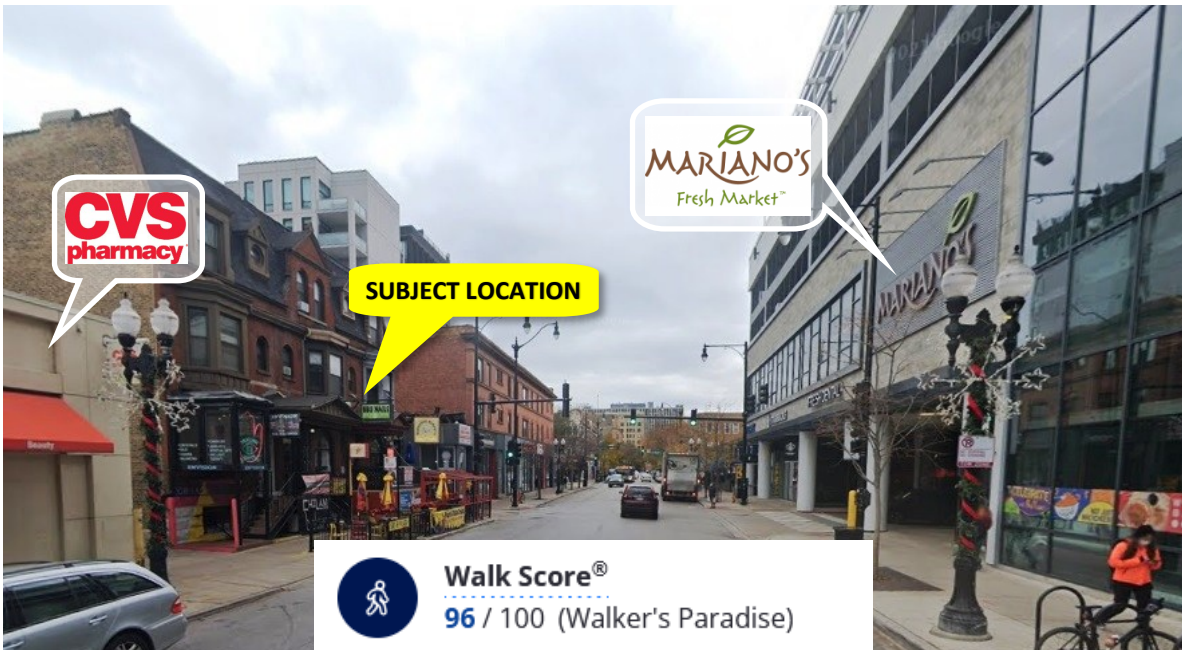
MJ WEINBERGER
847-334-2587
MJ@STRAUSSREALTY.COM

STRAUSS REALTY, LTD.
4220 W. MONTROSE AVE.
CHICAGO, ILLINOIS 60641

INTERIOR



STREET VIEW



MJ WEINBERGER
847-334-2587
MJ@STRAUSSREALTY.COM

STRAUSS REALTY, LTD.
4220 W. MONTROSE AVE.
CHICAGO, ILLINOIS 60641
PHONE: 773-736-3600