



JEFFREY IDA

Founding Principal

E: jida@lee-associates.com

C: (415) 828-7679

LIC: 01826381

BRENDAN GALLAGHER

Founding Principal

E: bgallagher@lee-associates.com

C: (760) 846-1736

LIC: 02047890

ZACK BARNES

Principal

E: zbarnes@lee-associates.com

C: (925) 330-2198

LIC: 01971978

2717 PERALTA ST
OAKLAND, CA 94607

± 20,000 - 85,000 SF WAREHOUSE SPACES

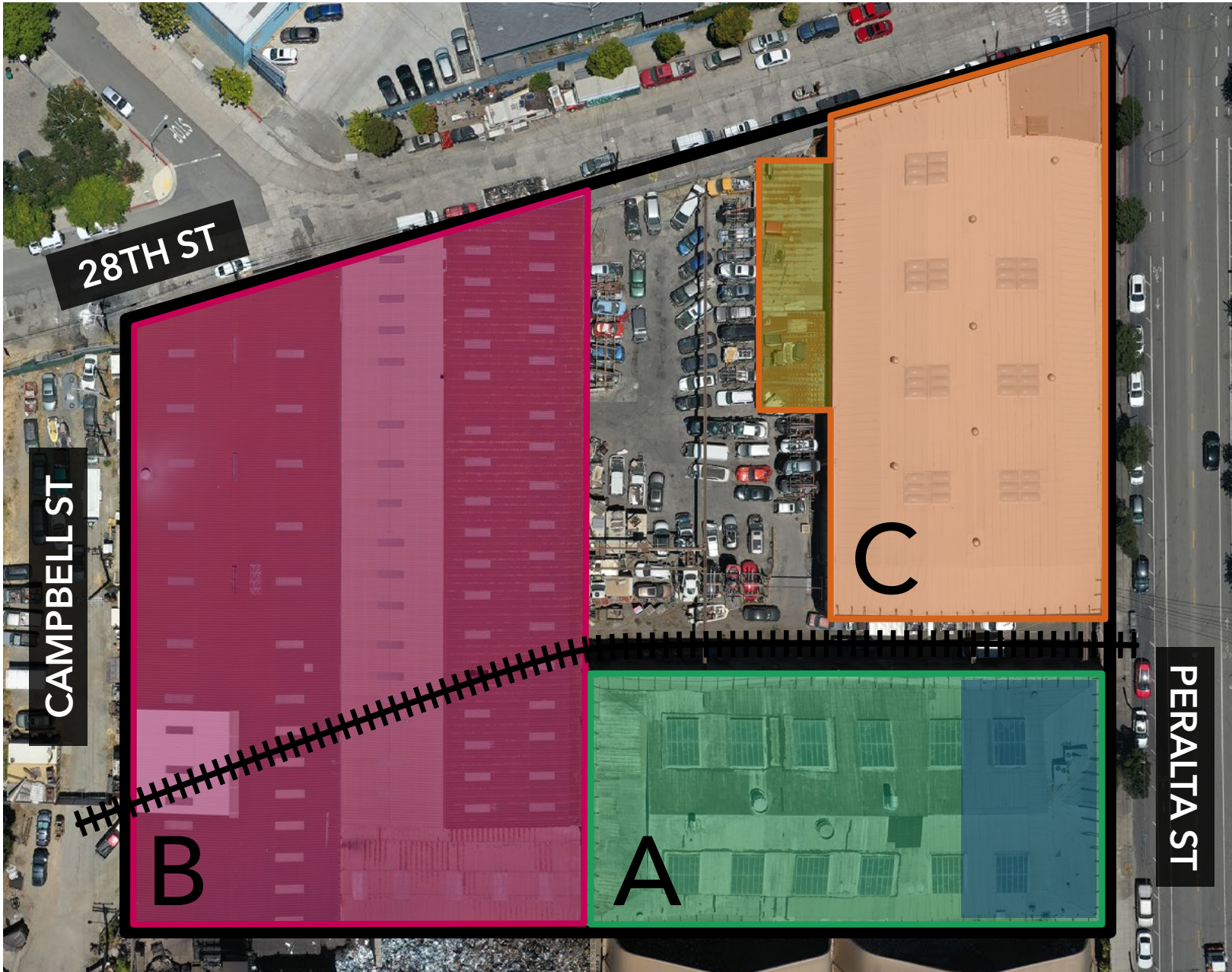
AVAILABLE FOR LEASE



Lee & Associates San Francisco Commercial Real Estate | 242 California Street, San Francisco, CA 94111 | www.lee-associates.com

All information furnished regarding property for sale, rental or financing is from sources deemed reliable, but no warranty or representation is made to the accuracy thereof and same is submitted to errors, omissions, change of price, rental or other conditions prior to sale, lease or financing or withdrawal without notice. No liability of any kind is to be imposed on the broker herein.

PROPERTY HIGHLIGHTS



Building A

- Available Within 60-Days
- 19,500 SqFt
- 18-26' Clear Height
- 400 Amp, 120/240 Volt, 3-Phase
- (3) 1 Ton Cranes
- (1) 2-Ton Crane
- 11,000 SqFt of two story office (to be removed)

Building B

- Available Q1 2025
- 42,500 SqFt
- 18-25' Clear Height
- 400 Amp, 277/480 Volt, 3-Phase
- (2) 5-Ton Cranes
- (1) 2-Ton Crane

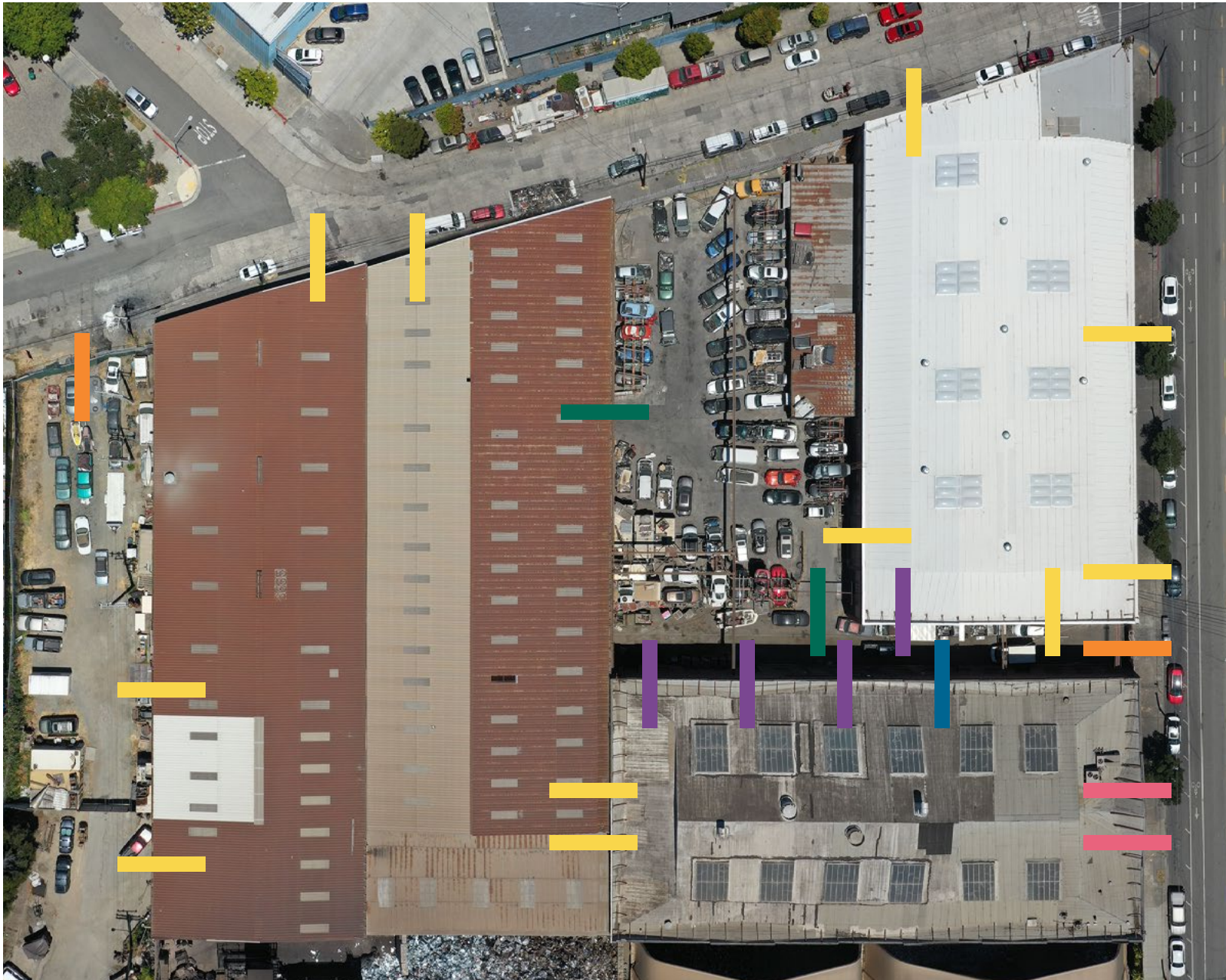
Building C

- Available Q1 2025
- 23,000 SqFt
- 20' Clear Height
- 1200 Amp, 120/240 Volt, 3-Phase
- (4) 2-Ton Cranes
- (1) 1-Ton Crane
- 2,500 SqFt SHED

RR SPUR

[CIX-1A West Oakland Plan](#)
[Area Commercial Industrial](#)
[Mix - 1A Industrial Zone](#)
[\(Business Enhancement\)](#)

PROPERTY ENTRANCES & BUILDING ACCESS

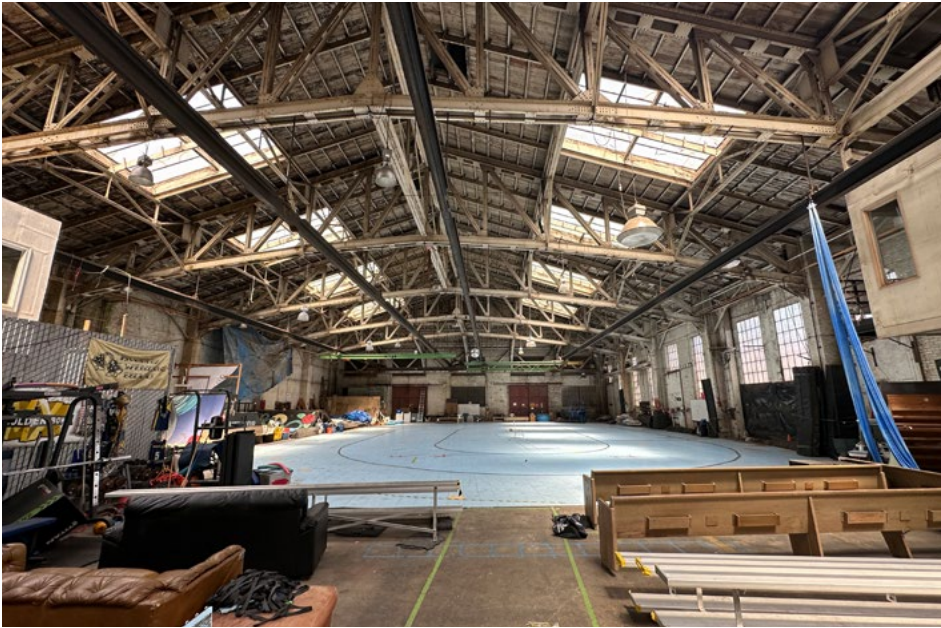


- Sliding Doors
- Street Access
- Roll-up Door and/or Ramp Access
- Rail Level Sliding Doors
- Ramp Doors
- Yard Access

□ ■ GALLERY - Building A



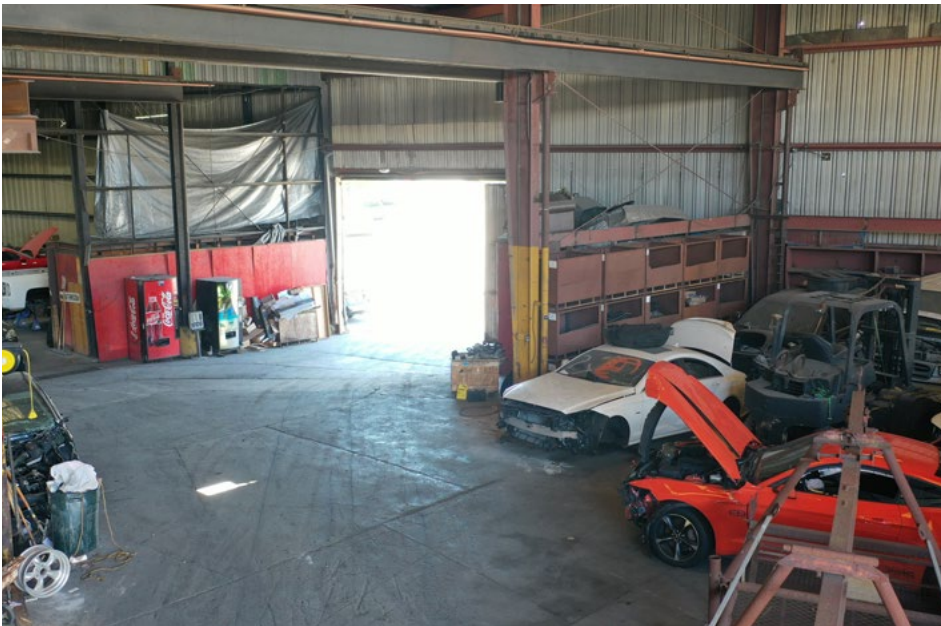
■ GALLERY - Building A



■ GALLERY - Building B



□ ■ GALLERY - Building B



□ ■ GALLERY - Building C



□ ■ Building C



JEFFREY IDA

Founding Principal
E: jjda@lee-associates.com
C: (415) 828-7679
LIC: 01826381

BRENDAN GALLAGHER

Founding Principal
E: bgallagher@lee-associates.com
C: (760) 846-1736
LIC: 02047890

ZACK BARNES

Principal
E: zbarnes@lee-associates.com
C: (925) 330-2198
LIC: 01971978

