

LEASE

13300 Long Fisher Rd

13300 LONG FISHER RD

North Little Rock, AR 72113

PRESENTED BY:

NATHAN HUTCHINS

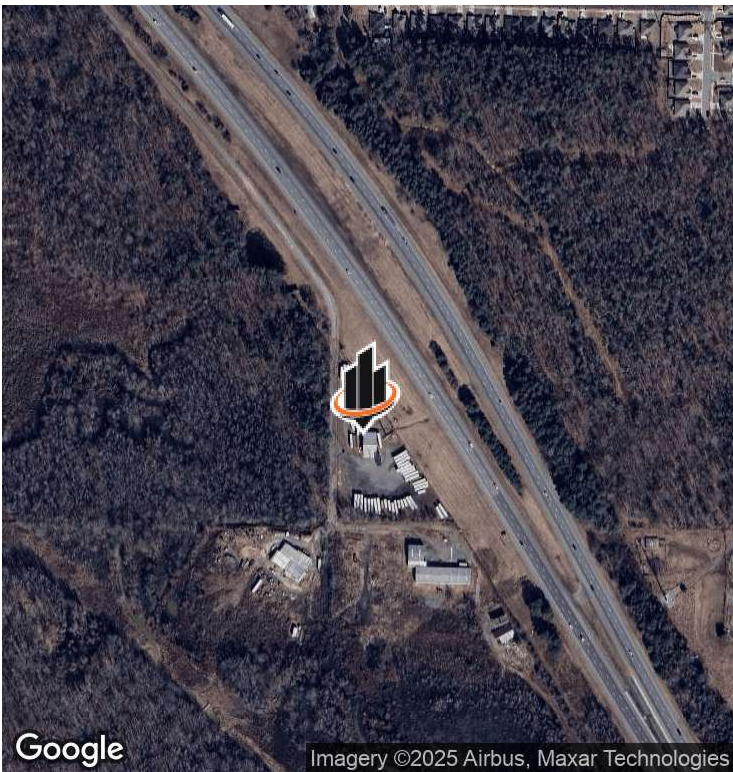
O: 501.912.3660

nathan.hutchins@svn.com

AR #PB00063530



PROPERTY SUMMARY



OFFERING SUMMARY

LEASE RATE:	\$5,900.00 SF/yr (MG)
AVAILABLE SF:	2,500 SF
LOT SIZE:	3 Acres
BUILDING SIZE:	2,520 SF

PROPERTY DESCRIPTION

Introducing a premier leasing opportunity at 13300 Long Fisher Rd, North Little Rock, AR, 72113. This commercial property offers a flexible and well-appointed space conducive to a variety of business needs. Boasting high visibility and easy access, this property presents an ideal setting for establishing and expanding your enterprise. With a traffic count of 85,000 vehicles per day, this location offers unparalleled exposure for your business. Ample parking and laydown yard that is fully fenced and secure. Preexisting sign structures to easily mount business signage. Enhance your business’s profile with this exceptional space and take advantage of the opportunities it presents.

PROPERTY HIGHLIGHTS

- - High visibility with 85,000 vehicles per day traffic count
- - Versatile space suitable for industrial users.
- - Ample parking and laydown yard.
- - Strategic location for attracting customers and clients
- - Ideal spot for establishing and expanding your

NATHAN HUTCHINS
O: 501.912.3660
nathan.hutchins@svn.com
AR #PB00063530

ADDITIONAL PHOTOS



NATHAN HUTCHINS

O: 501.912.3660

nathan.hutchins@svn.com

AR #PB00063530

LOCATION MAP



NATHAN HUTCHINS

O: 501.912.3660

nathan.hutchins@svn.com

AR #PB00063530