

# FOR LEASE



**4200 S. Grand Blvd. | St. Louis, MO 63111**

## PROPERTY HIGHLIGHTS

- **Restaurant/Bar: 3,100± SF** with kitchen fixtures
  - Full Kitchen with fixtures (inquire about list)
  - Full Bar with fixtures and 5 Taps
- **Bar Event Space: 2,200± SF** with catering kitchen
- **Upstairs Unfinished Bar: 1,600± SF**
  - Can be built out to tenant's specs
- Large parking lot of 40+ cars
- Outside Patio Area
- Anheuser-Busch built property in Dutch Town
- **LEASE RATE: \$20/SF NNN**



**Joseph Dusch, CCIM**

Vice President

Mobile: 636-346-0889

Direct: 636-728-5151

[jdusch@gundakercommercial.com](mailto:jdusch@gundakercommercial.com)



**Mel Desemone**

Vice President

Mobile: 314-941-3157

Direct: 636-728-5144

[mel@gundakercommercial.com](mailto:mel@gundakercommercial.com)



**Luke Fiala**

Associate

Mobile: 314-378-8820

[lfiala@gundakercommercial.com](mailto:lfiala@gundakercommercial.com)



**GUNDAKER**  
COMMERCIAL GROUP

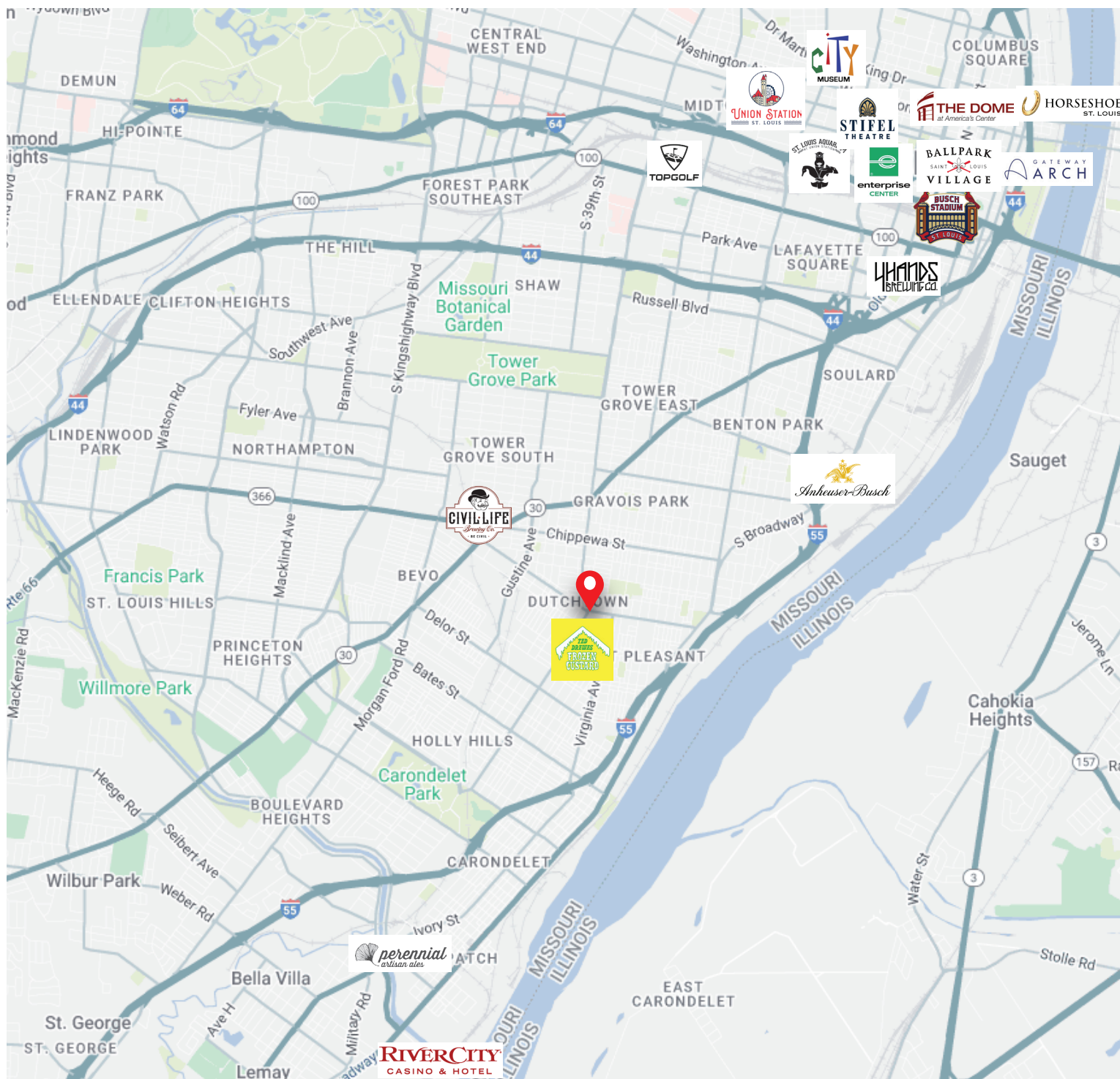
55 Westport Plaza Drive, Suite 200

St. Louis, MO 63146

636-728-5100

[www.gundakercommercial.com](http://www.gundakercommercial.com)

The information contained herein was obtained from sources believed reliable. Gundaker Commercial Group makes no guarantees, warranties, or representation as to the completeness or accuracy thereof. The presentation of this property is submitted subject to errors, omissions, change of price or conditions prior to sale or lease, or withdrawal without notice.



**Joseph Dusch, CCIM**

Vice President

Mobile: 636-346-0889

Direct: 636-728-5151

[jdusch@gundakercommercial.com](mailto:jdusch@gundakercommercial.com)



**Mel Desemone**

Vice President

Mobile: 314-941-3157

Direct: 636-728-5144

[mel@gundakercommercial.com](mailto:mel@gundakercommercial.com)



**Luke Fiala**

Associate

Mobile: 314-378-8820

[lfiala@gundakercommercial.com](mailto:lfiala@gundakercommercial.com)



**GUNDAKER**  
COMMERCIAL GROUP

55 Westport Plaza Drive, Suite 200

St. Louis, MO 63146

636-728-5100

[www.gundakercommercial.com](http://www.gundakercommercial.com)