

70 E. SILVERDOME
INDUSTRIAL PARK COURT
PONTIAC, MICHIGAN

INDUSTRIAL FOR SALE
30,800 Square Feet Available



**SIGNATURE
ASSOCIATES**
KNOW SIGNATURE | KNOW RESULTS

CORPORATE HEADQUARTER LOCATION



PROPERTY FEATURES

- 30,800 square feet available
- 10,000 square feet office
- 20' clear height
- (2) 12'x14' grade level door, (2) truckwells
- 1200 amps, 480 volts power
- 45 parking spaces
- Located on 2.3 acres
- Excellent location for corporate headquarters/manufacturing
- Sale Price: \$4,158,000 (\$135.00/sq. ft.)



For more information, please contact:

STEVE GORDON
(248) 948 0101
sgordon@signatureassociates.com

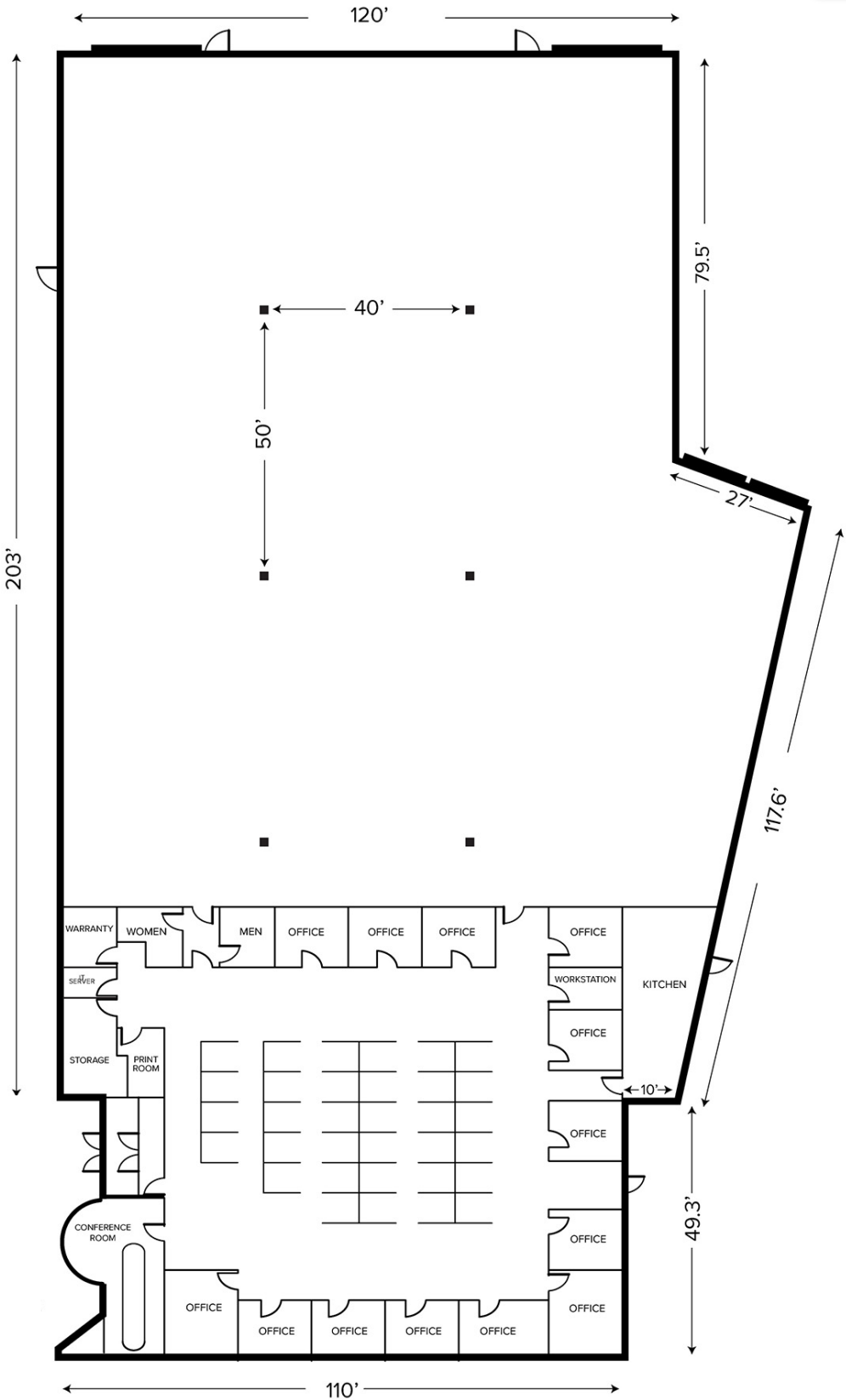
GARY STEPHENS
(248) 948 0104
gstephens@signatureassociates.com

SIGNATURE ASSOCIATES
One Towne Square, Suite 1200
Southfield, MI 48076
www.signatureassociates.com

70 E. Silverdome Industrial Park Court – Pontiac, Michigan
Industrial For Sale

30,800
Square Feet
Available

Floor Plan



For more information, please contact:

STEVE GORDON
(248) 948 0101
sgordon@signatureassociates.com

GARY STEPHENS
(248) 948 0104
gstephens@signatureassociates.com

SIGNATURE ASSOCIATES
One Towne Square, Suite 1200
Southfield, MI 48076
www.signatureassociates.com

Information is subject to verification and no liability for errors or omissions is assumed. Price is subject to change and listing withdrawal.

70 E. Silverdome Industrial Park Court – Pontiac, Michigan

Industrial For Sale

30,800
Square Feet
Available

Aerial



For more information, please contact:

STEVE GORDON

(248) 948 0101

sgordon@signatureassociates.com

GARY STEPHENS

(248) 948 0104

gstephens@signatureassociates.com

SIGNATURE ASSOCIATES

One Towne Square, Suite 1200

Southfield, MI 48076

www.signatureassociates.com

Information is subject to verification and no liability for errors or omissions is assumed. Price is subject to change and listing withdrawal.