

FOR LEASE OR SALE | **11,250 SF COMMERCIAL BUILDING**

88 BROAD STREET

WINTER GARDEN, FL 34787



- * Fully Climate Controlled Commercial Building
- * Sound System in Office and Showroom
- * Security System Interface & Wiring Present

PROPERTY HIGHLIGHTS

- **Building Size:** 11,250 SF
 - Office: 2,775 SF
 - Showroom: 8,475 SF
- **Excess Parking:** 10,300 SF of Fenced & Gated Area
- **Clear Height:** 14' - 16'6"
- **Doors:** Five (5) Grade Level Doors (12'x12')
 - 3 Automatic roll up doors
- **Construction:** Tilt Wall
- **Zoning:** C-2 (Winter Garden)

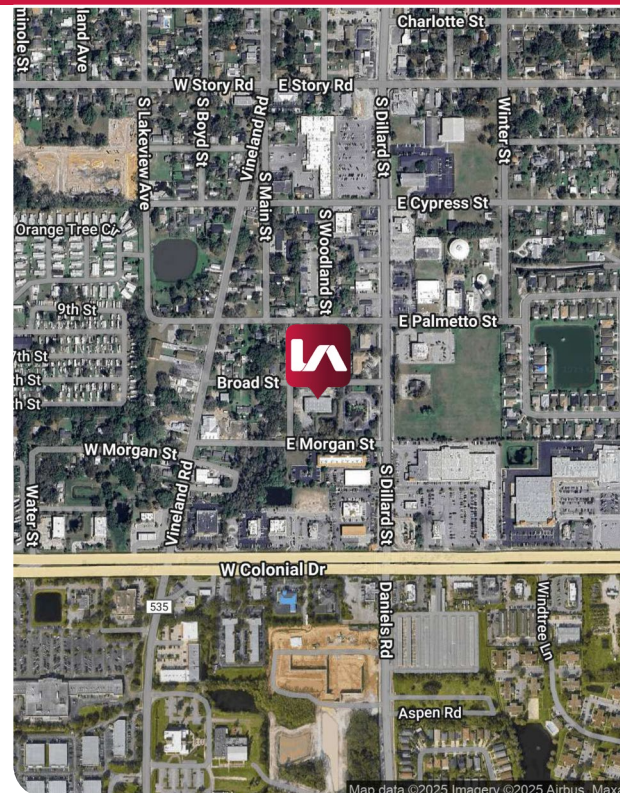
[Click Here For Permitted Uses](#)

RATE INFORMATION: CALL FOR INFO

Leasing Contact:

Brock Holston
Associate
bholston@lee-associates.com
D 407.413.0252

Jason Bantel, CCIM
Senior Vice President
jbantel@lee-associates.com
D 321.281.8509



All information furnished regarding property for sale, rental or financing is from sources deemed reliable, but no warranty or representation is made to the accuracy thereof and same is submitted to errors, omissions, change of price, rental or other conditions prior to sale, lease or financing or withdrawal without notice. No liability of any kind is to be imposed on the broker herein.

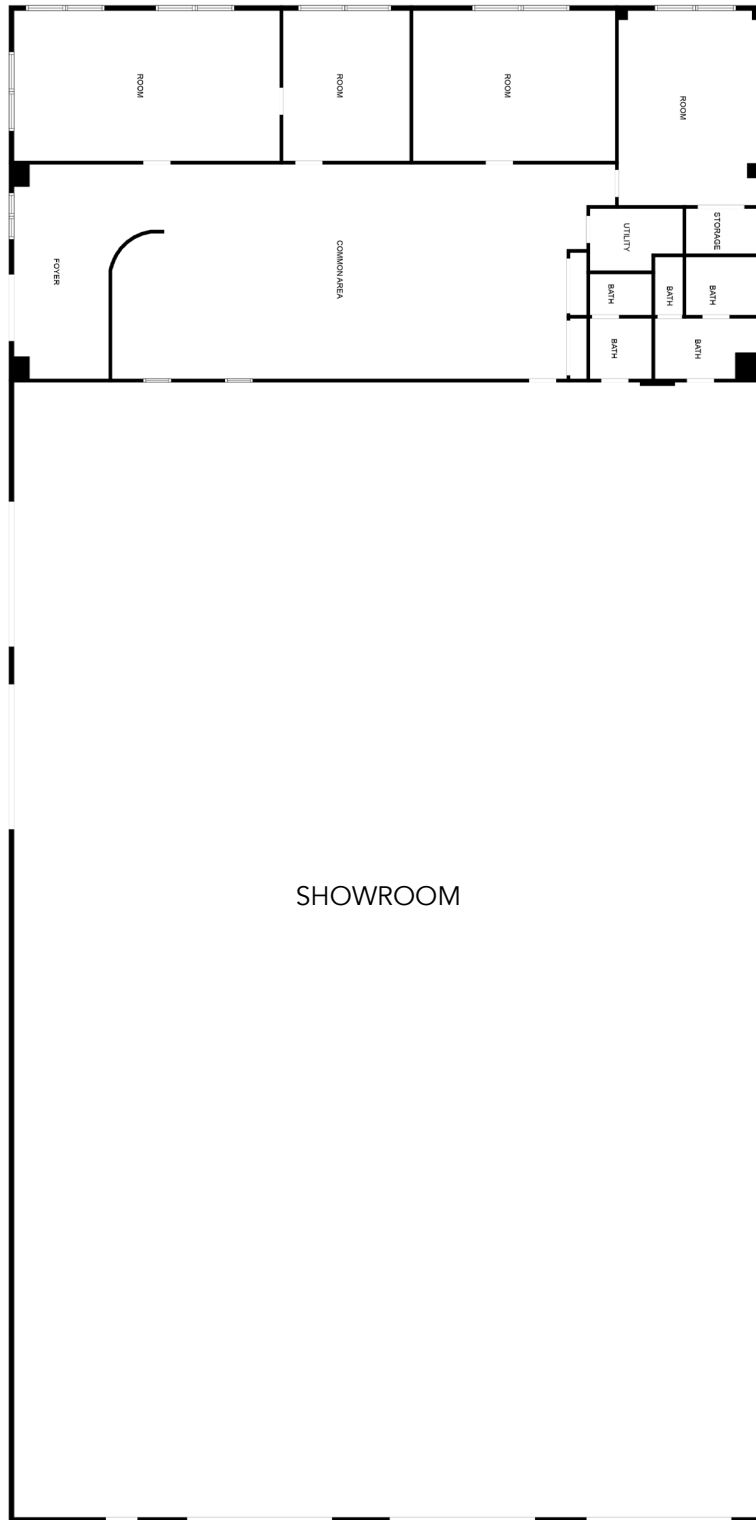
88 BROAD STREET
WINTER GARDEN, FL 34787



88 BROAD STREET
WINTER GARDEN, FL 34787



88 BROAD STREET
WINTER GARDEN, FL 34787

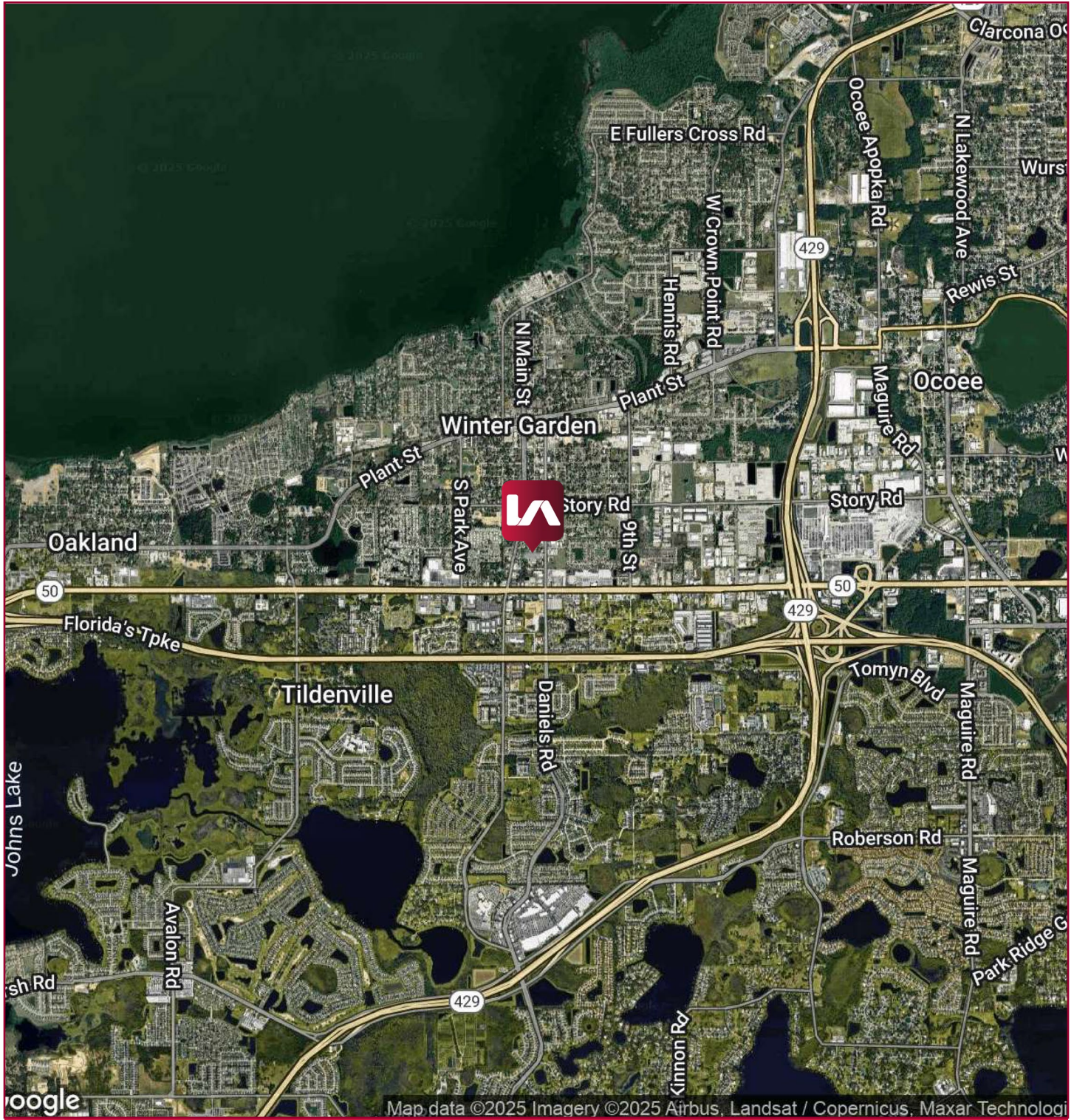


Leasing Contact:

Brock Holston
Associate
bholston@lee-associates.com
D 407.413.0252

Jason Bantel, CCIM
Senior Vice President
jbantel@lee-associates.com
D 321.281.8509

88 BROAD STREET
WINTER GARDEN, FL 34787



Leasing Contact:

Brock Holston
Associate
bholston@lee-associates.com
D 407.413.0252

Jason Bantel, CCIM
Senior Vice President
jbantel@lee-associates.com
D 321.281.8509