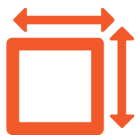


# FOR LEASE

372 PULTENEY ST, CORNING NY 14830



**2,925 +/-**  
SF AVAILABLE



**16,375**  
VEHICLES PER DAY



**UPON REQUEST**

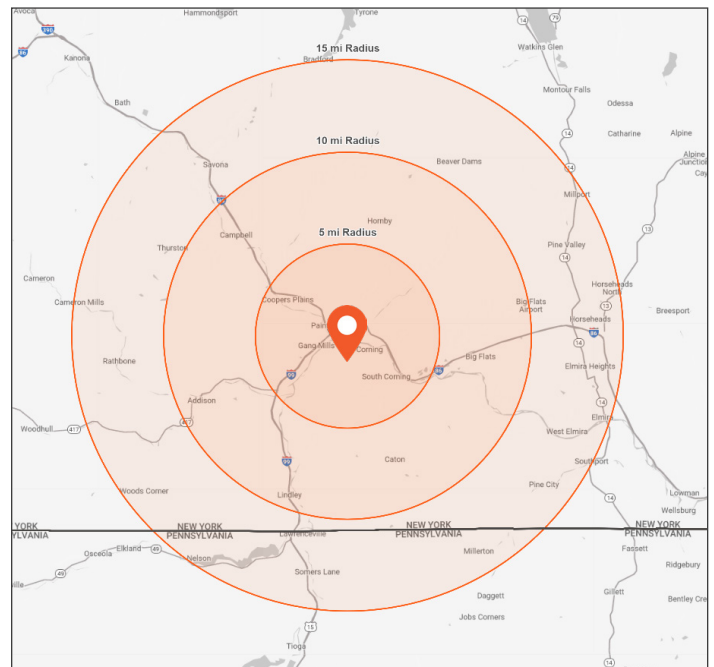
## OFFERING SUMMARY

Total Building Size	6,659+/- SF
Traffic Counts	W Pulteney St: 9,267 / vpd S Buffalo St: 7,112 / vpd
Lease Price	\$ Upon Request
Lease Type	NNN

## PROPERTY HIGHLIGHTS

- 2,925 SF Available
- Co-tenants include Starbucks & Jersey Mike's Subs
- Close proximity to I-86
- Easy Access
- Plenty of Parking

## NEARBY RETAILERS

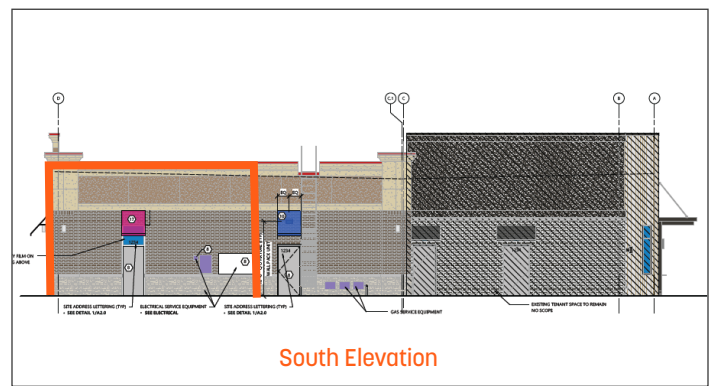
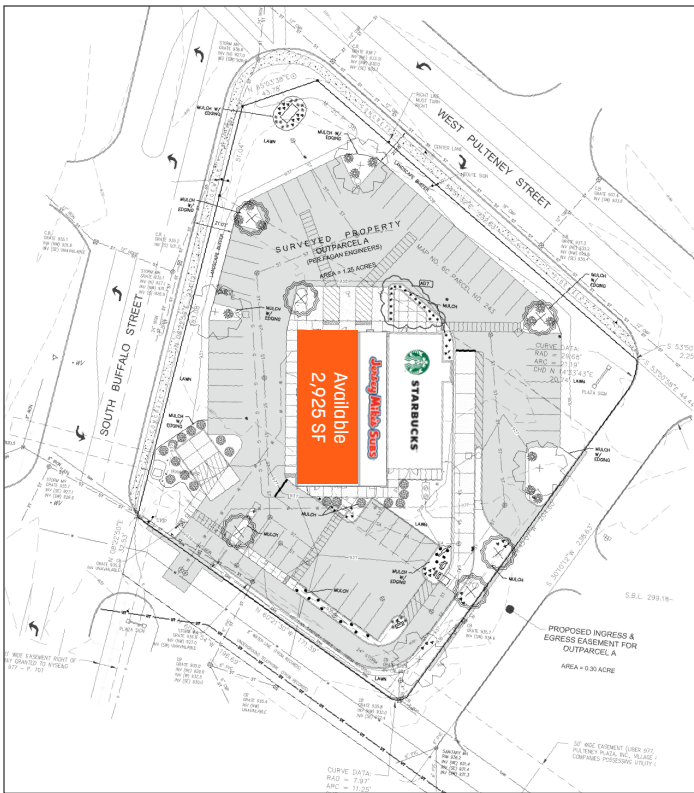
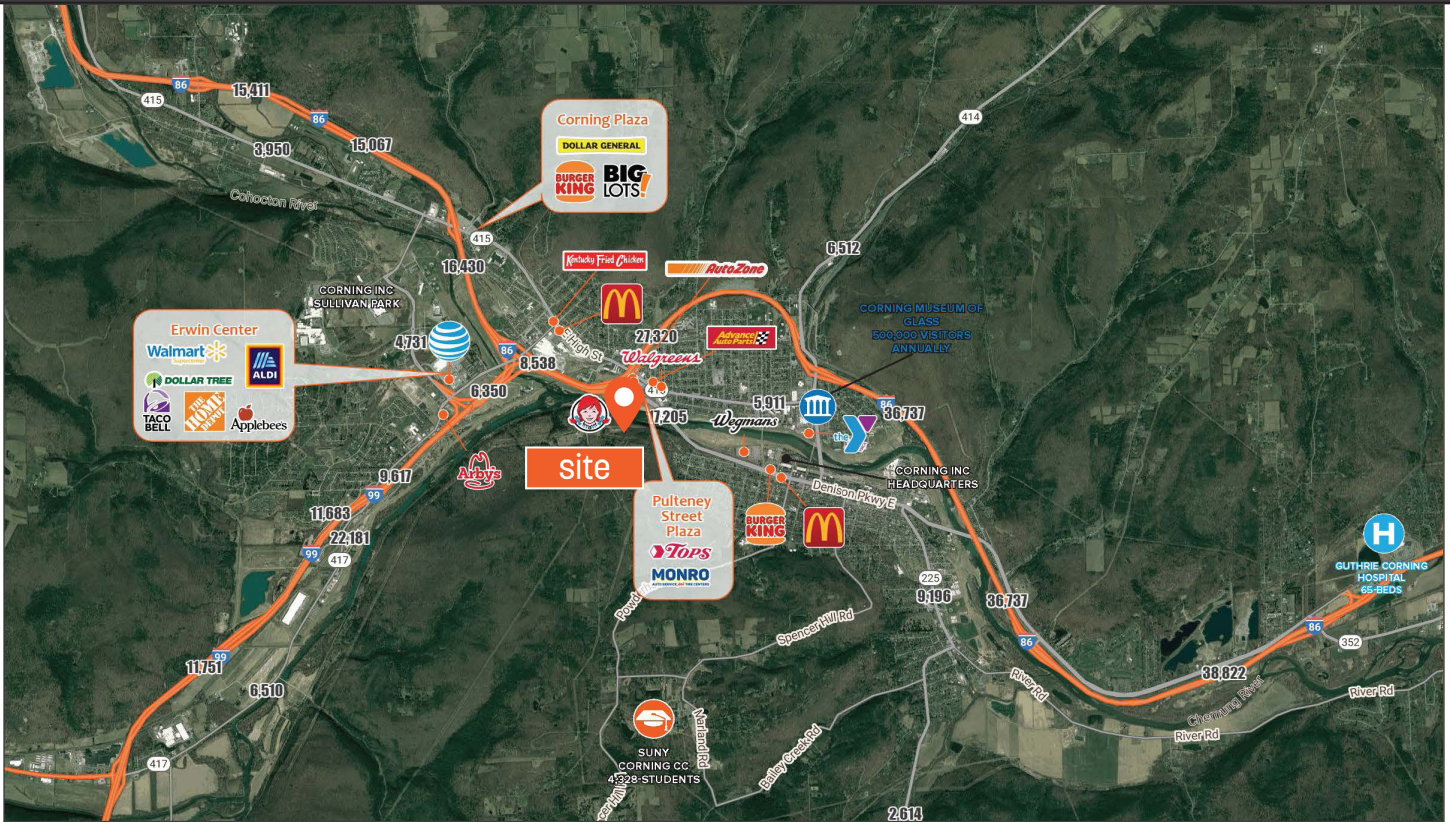


DEMOGRAPHICS	5 Mile	10 Miles	15 Miles
Population	23,308	40,067	105,259
Median HH Income	\$74,061	\$78,457	\$69,090
Households	10,598	17,446	45,354
Employees	8,827	15,029	40,533



# FOR LEASE

372 PULTENEY ST, CORNING NY 14830



**Daniel Bosio**  
 Licensed Real Estate Salesperson  
 585.454.4500 x116  
 dan@caliberbrokerage.com

**Matthew J. Lester, Partner**  
 Licensed Real Estate Broker  
 585.454.4500 x112  
 mlester@caliberbrokerage.com

**Caliber Commercial Brokerage LLC**  
 1657 East Avenue | Rochester, NY 14610  
 caliberbrokerage.com  
 585.454.4500