



4725 First Street, Pleasanton, CA

Downtown at the Corner of Bernal Ave & First St



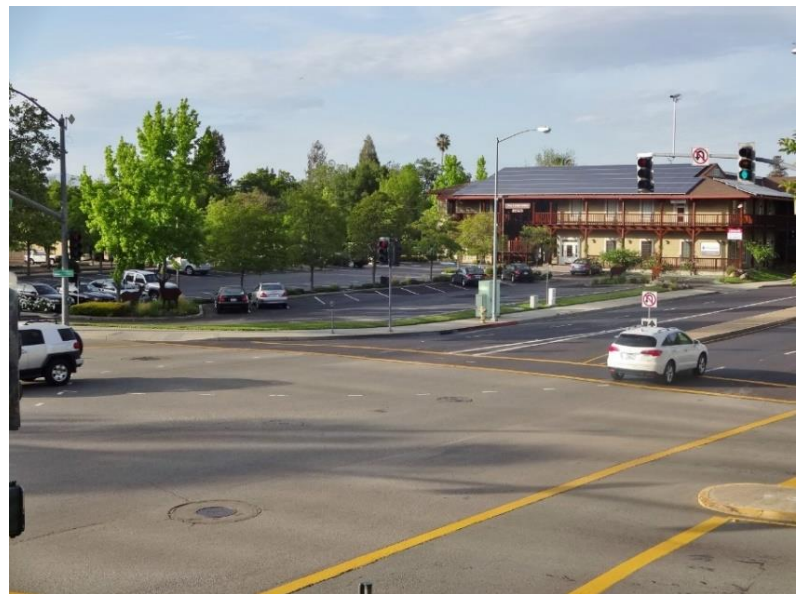
South Lot

LOCATION – Gateway corner in a vibrant Downtown

- Minutes to I-680, and I-580/680 interchange
- On commute corridor to Silicon Valley
- Walk to cafes, parks, City offices...
- Adjacent to just completed park, trails & parking
- EV chargers just steps away
- Within the Downtown Pleasanton Business District

PROPERTY

- Elevator
- Auto-operated entry doors
- Electronic-access hall doors for after hrs safety
- Ample on-site parking





Civic Center Station

Commercial, Office & Retail Leasing

4725 First Street, Pleasanton, CA

Downtown at the Corner of Bernal Ave & First St



Is there a reason your business would not benefit from being at the corner of Downtown Pleasanton?
Would working from a commute corridor to Silicon Valley make access easier for you? For clients?
Are there many employees and customers who would not take advantage of the great Downtown?
Love fresh mid-day coffee? ... a stroll?



CIVIC CENTER STATION COMMERCIAL LEASING

VERA REVELLI | O: 925.484.4725 | C: 510-701-3698 | vera@civiccenterstation.com