



**PINNACLE  
REALTY**  
OF NEW YORK, LLC

EXCLUSIVE LISTING

**FOR LEASE**



**18-09 DECATUR STREET**

**RIDGEWOOD, NY 11385**

# 2,000 Sq. Ft. Fenced + Paved Yard

With a 1,000 Sq. Ft. Office/Showroom  
Building in the Heart of Ridgewood

Type  
**Office / Land**



SQUARE FOOT

**3,000<sub>RSF</sub>**



ZONING

**M1-4D**



LOADING

**1 LARGE GATE**



PARCEL ID

**3578**

BLOCK



**58**

LOT

**PRICE**

**Upon Request**

**718-784-8282 / PINNACLERENY.COM**

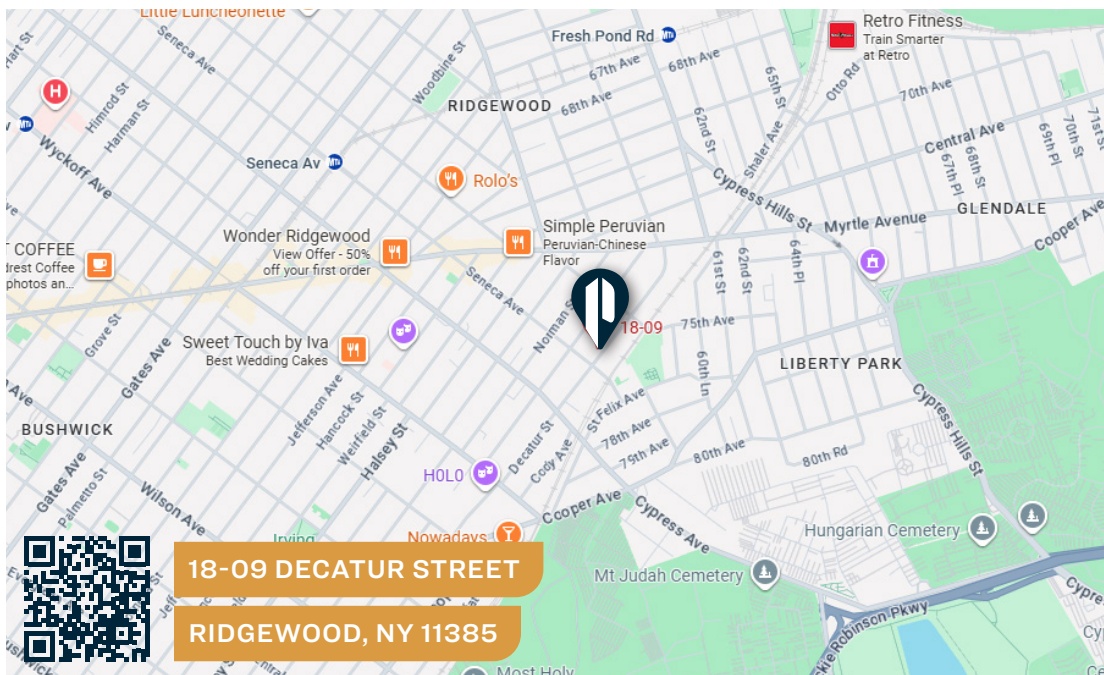
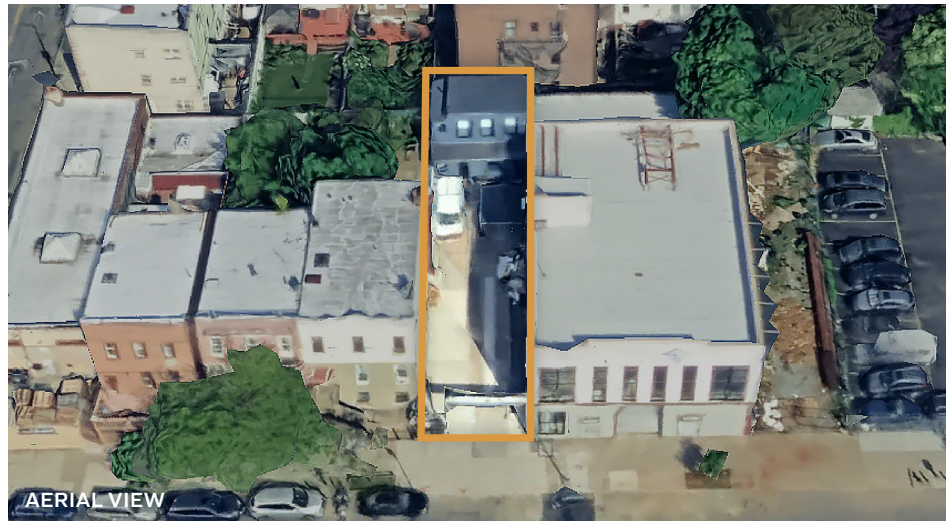
All information is from sources deemed reliable and is submitted subject to errors, omission, changes of price or other conditions, prior sale, rent and withdrawal without notice.



# Property Overview

## Features

- 2,500 Sq. Ft. Plot
- 1,000 Sq. Ft. Office/Showroom
- Full HVAC
- 2,000 Sq. Ft. Secured Yard
- Immediate Possession



## TRANSPORTATION



HALSEY ST/  
WYCKOFF AVE



FOREST AVE  
SENECA AVE



JACKIE  
ROBINSON PKWY



B20: DECATUR  
ST/SENECA AVE

Q39: FOREST  
AVE/SUMMER-  
FIELD ST

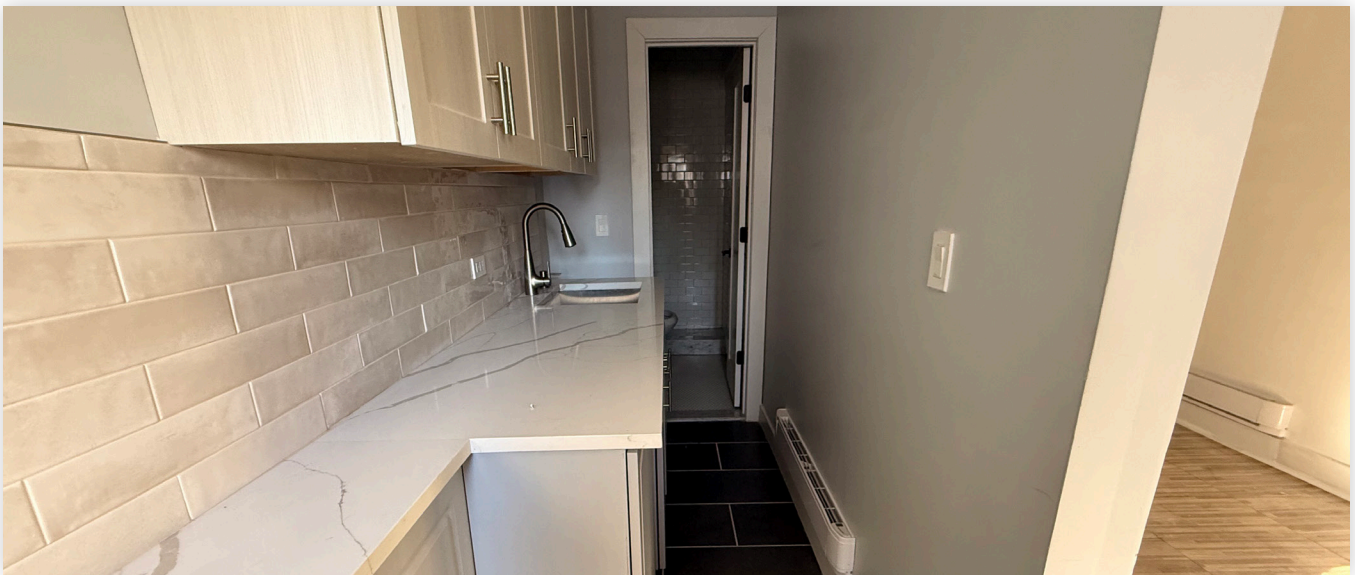


718-784-8282 / PINNACLERENY.COM

All information is from sources deemed reliable and is submitted subject to errors, omission, changes of price or other conditions, prior sale, rent and withdrawal without notice.



## PICTURES



**PINNACLE  
REALTY**  
OF NEW YORK, LLC

34-07 Steinway Street, Suite 202  
Long Island City, NY 11101  
718-784-8282  
[pinnaclereny.com](http://pinnaclereny.com)

FOR MORE INFORMATION ABOUT THIS  
PROPERTY CONTACT EXCLUSIVE AGENTS:



**BILLY SALOMON**

Salesperson  
[bsalomon@pinnaclereny.com](mailto:bsalomon@pinnaclereny.com)  
718-371-6405



**THOMAS CHAMOUN**

Salesperson  
[tchamoun@pinnaclereny.com](mailto:tchamoun@pinnaclereny.com)  
718-371-6377